



Amontec JTAGkey : Install Drivers to Windows XP

amt_ann006 (v1.0)

Application Note

OVERVIEW

This document assumes you have installed the Amontec JTAGkey Utils setup.exe on your computer.

If this is not the case, please feel you free to download and install the last version of the Amontec JTAGkey Utils setup.exe. Please download the setup.exe from the Amontec website on page:

<http://www.amontec.com/jtagkey.shtml> .

Also, after installing Amontec JTAGkey Utils setup.exe on your computer, you have got all indispensable resources to continue the setup of the Amontec JTAGkey Drivers.

INDEX

| | |
|---|----|
| Overview | 1 |
| index..... | 1 |
| Installing Amontec JTAGkey Drivers to Windows XP..... | 2 |
| Connecting your Amontec JTAGkey cable | 2 |
| Installing the Amontec JTAGkey Drivers | 2 |
| Verifying your Amontec JTAGkey installation. | 6 |
| Uninstalling Amontec JTAGkey from Windows XP..... | 8 |
| Content Revisions | 10 |
| Contact Amontec..... | 10 |

INSTALLING AMONTEC JTAGKEY DRIVERS TO WINDOWS XP

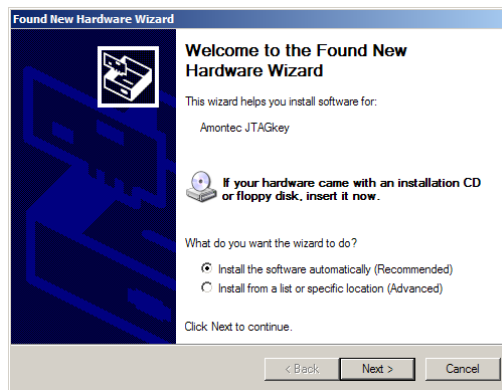
Connecting your Amontec JTAGkey cable

Please connect your Amontec JTAGkey to one USB port of your computer.

Some seconds after plugging, your computer should detect your Amontec JTAGkey and it will try to enumerate the new USB devices. If the enumeration step was successfully, the internal green LED of your Amontec JTAGkey should comes 'ON'.

Installing the Amontec JTAGkey Drivers

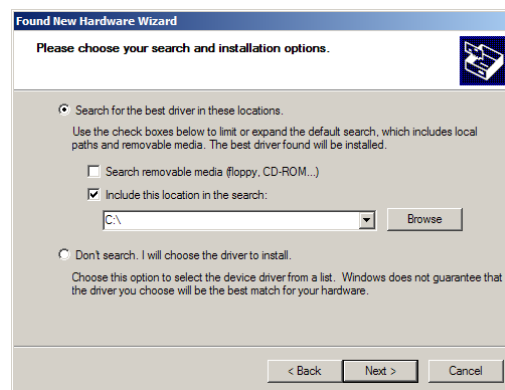
Your operating system should detect your Amontec JTAGkey and start the install wizard for it.



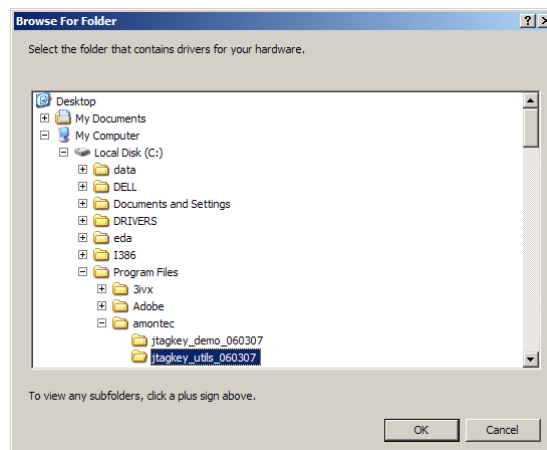
Select the "Install from a list or specific location".



Click the "Next >" button.



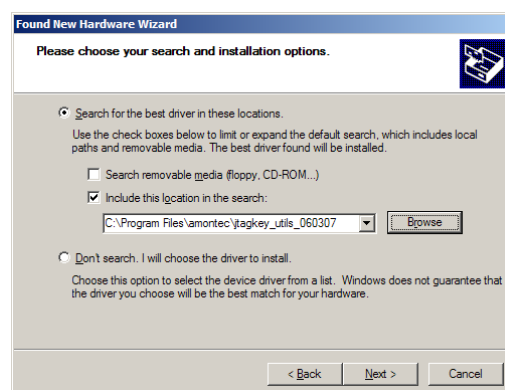
In the “Please choose your search and installation options” dialog, please select the “Include this location in the search:” only. Click on the “Browse” button.



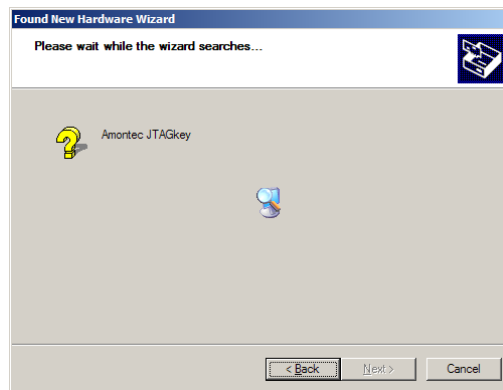
Browse to the location your selected for your Amontec JTAGkey Utils install.

By default, the location of your Amontec JTAGkey Utils should be: c:\Program Files\amontec\jtagkey_utils_XXXXXX\. With XXXXXX being the version of your Amontec JTAGkey Utils (XXXXXX: year/month/day).

Click the “OK” button.



Click the “Next >” button.

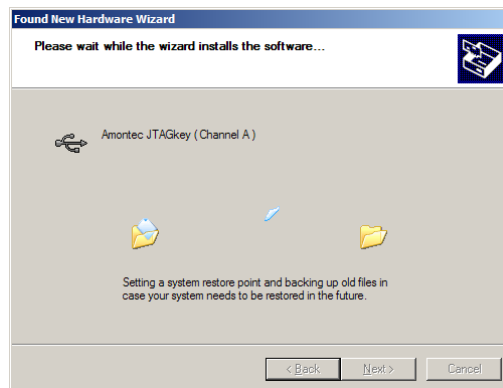


Wait while the wizard searches for the drivers in the locations you have specified.

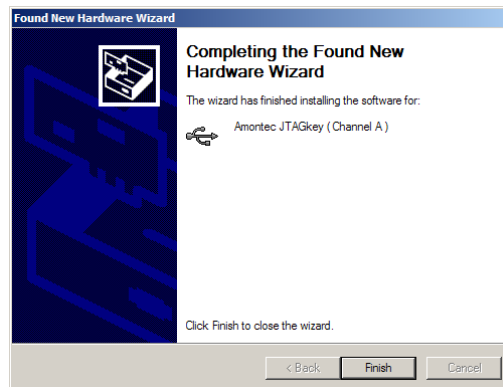
You will receive this window warning.



Click the “Continue Anyway” button. This driver has been verified to work with Windows XP.



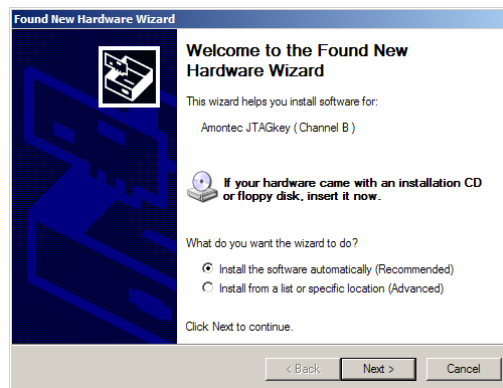
Wait while the wizard installs the drivers for your Amontec JTAGkey.



Click the "Finish" button. You are done.

The Amontec JTAGkey id based on a USB composite devices. This means that the second Channel of the USB device (Channel B) must be installed too.

You will receive an new "Found New Hardware Wizard".

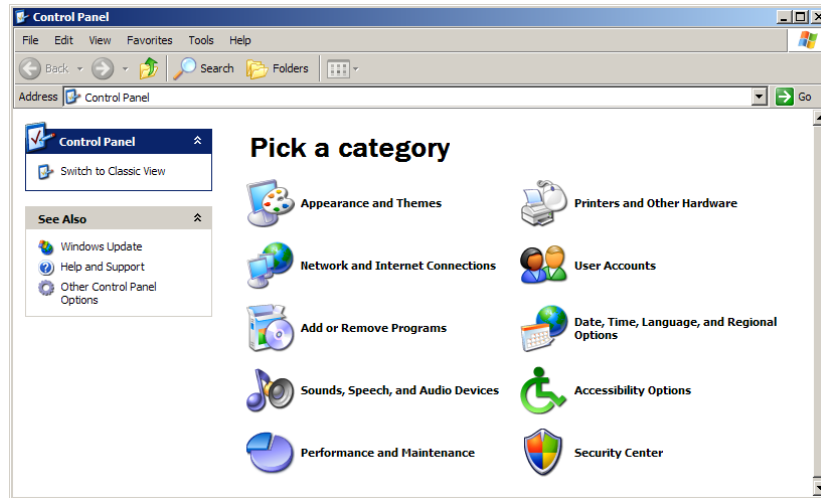


Please follow the same steps as the above steps from the [Installing the Amontec JTAGkey Drivers](#) section.

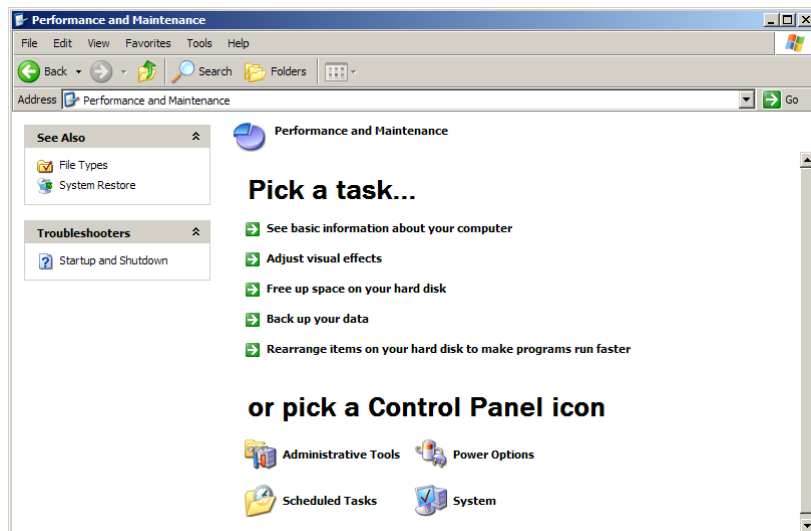
Goto the [Installing the Amontec JTAGkey Drivers](#) section.

Verifying your Amontec JTAGkey installation.

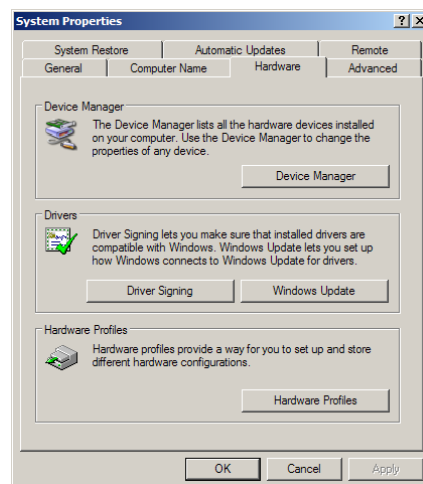
Open the “Control Panel” playing with “Start” menu and selecting “Control Panel”.



Click the “Performance and Maintenance” icon.

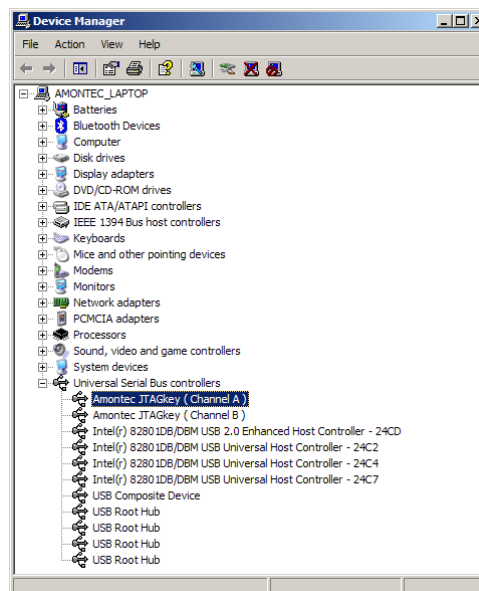


Click the “System” icon.



In the "System Properties" window, select the "Hardware" tabulation.

Click on the "Device Manager" button.



You should see the two Channel of the Amontec JTAGkey under the "Universal Serial Bus controllers" section of the Device Manager.

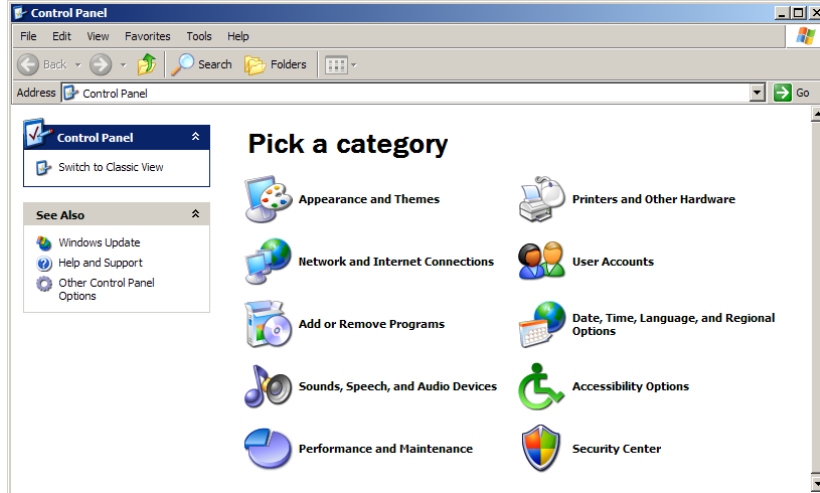
Congratulation: you are now ready to use your Amontec JTAGkey with the Amontec JTAGkey Demo Software or with another custom software.

If you meet any trouble installing the Amontec JTAGkey Drivers, please first read the Amontec JTAGkey FAQ from <http://www.amontec.com/jtagkey.shtml> or please contact Amontec Team from <http://www.amontec.com/contact.shtml> .

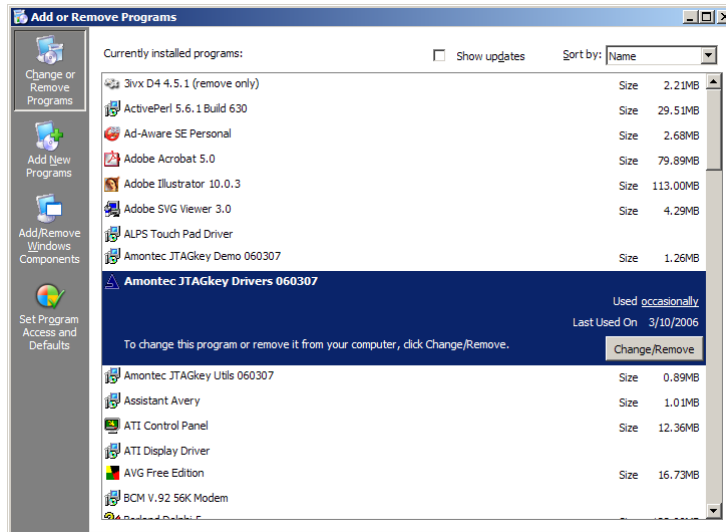
UNINSTALLING AMONTEC JTAGKEY FROM WINDOWS XP

At anytime you may uninstall the specific Amontec JTAGkey Drivers from your computer.

Open the “Control Panel” playing with “Start” menu and selecting “Control Panel”.



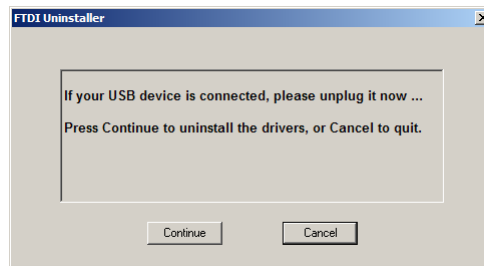
Click the “Add and Remove Programs” icon.



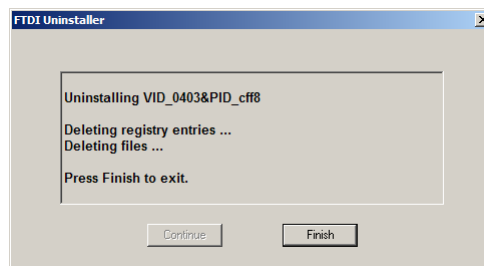
Select the “Amontec JTAGkey Drivers xxxxxx” icon.

Click the “Change/Remove” button.

!!! Verify you unplugged any Amontec JTAGkey from the USB port of your computer.



Click the "Continue" button.



Click the "Finish" button

Congratulation: the Amontec JTAGkey Drivers xxxxxx are now successfully removed.

If you meet any trouble uninstalling the Amontec JTAGkey Drivers, please first read the Amontec JTAGkey FAQ from <http://www.amontec.com/jtagkey.shtml> or please contact Amontec Team from <http://www.amontec.com/contact.shtml> .

CONTENT REVISIONS

This document contains the following changes to content, causing it to differ from previous versions:

| Version | Date | Changes |
|---------|-------------|----------------------------------|
| V1.0 | 10-MAR-2006 | First version (by Laurent Gauch) |
| | | |

CONTACT AMONTEC

Amontec, Gauch

LA Grand Fin 32

1633 Vuippens

Switzerland

<http://www.amontec.com/>

SPECIFICATIONS ARE SUBJECT TO CHANGE WITHOUT NOTICE.

Suggested applications (if any) are for standard use. See Important Restrictions for limitations on special applications. See Limited Warranty for Amontec's product warranty. The Limited Warranty is in lieu, and exclusive of, all other warranties, express or implied. ALL EXPRESS AND IMPLIED WARRANTIES, INCLUDING THE WARRANTIES OF MERCHANTABILITY, FITNESS FOR USE AND FITNESS FOR A PARTICULAR PURPOSE, ARE SPECIFICALLY EXCLUDED. In no event will Amontec be liable, or in any way responsible, for any incidental or consequential economic or property damage.