



# **SAS<sup>®</sup> Certification Prep Guide: Base Programming for SAS<sup>®</sup>9, Fourth Edition**

The correct bibliographic citation for this manual is as follows: SAS Institute Inc. 2017. *SAS® Certification Prep Guide: Base Programming for SAS®9, Fourth Edition*. Cary, NC: SAS Institute Inc.

**SAS® Certification Prep Guide: Base Programming for SAS®9, Fourth Edition**

Copyright © 2017, SAS Institute Inc., Cary, NC, USA

ISBN 978-1-63526-373-2 (Hard copy)

ISBN 978-1-63526-468-5 (Epub)

ISBN 978-1-63526-469-2 (Mobi)

ISBN 978-1-63526-470-8 (PDF)

All Rights Reserved. Produced in the United States of America.

**For a hard copy book:** No part of this publication may be reproduced, stored in a retrieval system, or transmitted, in any form or by any means, electronic, mechanical, photocopying, or otherwise, without the prior written permission of the publisher, SAS Institute Inc.

**For a web download or e-book:** Your use of this publication shall be governed by the terms established by the vendor at the time you acquire this publication.

The scanning, uploading, and distribution of this book via the Internet or any other means without the permission of the publisher is illegal and punishable by law. Please purchase only authorized electronic editions and do not participate in or encourage electronic piracy of copyrighted materials. Your support of others' rights is appreciated.

**U.S. Government License Rights; Restricted Rights:** The Software and its documentation is commercial computer software developed at private expense and is provided with RESTRICTED RIGHTS to the United States Government. Use, duplication, or disclosure of the Software by the United States Government is subject to the license terms of this Agreement pursuant to, as applicable, FAR 12.212, DFAR 227.7202-1(a), DFAR 227.7202-3(a), and DFAR 227.7202-4, and, to the extent required under U.S. federal law, the minimum restricted rights as set out in FAR 52.227-19 (DEC 2007). If FAR 52.227-19 is applicable, this provision serves as notice under clause (c) thereof and no other notice is required to be affixed to the Software or documentation. The Government's rights in Software and documentation shall be only those set forth in this Agreement.

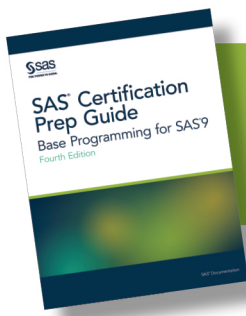
SAS Institute Inc., SAS Campus Drive, Cary, NC 27513-2414

January 2018

SAS® and all other SAS Institute Inc. product or service names are registered trademarks or trademarks of SAS Institute Inc. in the USA and other countries. ® indicates USA registration.

Other brand and product names are trademarks of their respective companies.

P2:certpgbp



An Introduction to SAS® Certification Guide: Base Programming for SAS®9, Fourth Edition. Full book available for purchase [here](#).

---

## Contents

<i>How to Prepare for the SAS Base Programming for SAS®9 Exam</i> . . . . .	ix
<i>Accessibility Features of the SAS Certification Prep Guide</i> . . . . .	xiii
<b>Chapter 1 • Setting Up Practice Data</b> . . . . .	<b>1</b>
Determine What SAS Solution or Environment You Are Using . . . . .	1
Determine Whether You Have Write Access . . . . .	1
SAS Windowing Environment . . . . .	2
SAS Studio and SAS University Edition . . . . .	2
SAS Enterprise Guide . . . . .	3
<b>Chapter 2 • Basic Concepts</b> . . . . .	<b>5</b>
Getting Started . . . . .	6
The Basics of the SAS Language . . . . .	6
SAS Libraries . . . . .	11
Referencing SAS Files . . . . .	13
SAS Data Sets . . . . .	15
Chapter Quiz . . . . .	22
<b>Chapter 3 • Setting Up Your SAS Session</b> . . . . .	<b>27</b>
SAS Libraries . . . . .	28
Viewing SAS Libraries . . . . .	31
Specifying Results Formats . . . . .	36
Setting System Options . . . . .	41
Chapter Quiz . . . . .	48
<b>Chapter 4 • Identifying and Correcting Errors</b> . . . . .	<b>51</b>
Error Messages . . . . .	51
Correcting Common Errors . . . . .	53
Chapter Quiz . . . . .	62
<b>Chapter 5 • Creating List Reports</b> . . . . .	<b>67</b>
Creating a Basic Report . . . . .	68
Selecting Variables . . . . .	69
Identifying Observations . . . . .	70
Sorting Data . . . . .	74
Generating Column Totals . . . . .	76
Double Spacing LISTING Output . . . . .	82
Specifying Titles and Footnotes in Procedure Output . . . . .	82
Assigning Descriptive Labels . . . . .	88
Formatting Data Values . . . . .	90
Using Permanently Assigned Labels and Formats . . . . .	93
Chapter Quiz . . . . .	94
<b>Chapter 6 • Creating SAS Data Sets from External Files</b> . . . . .	<b>99</b>
Raw Data Files . . . . .	100
Creating a SAS Data Set from a Raw Data File . . . . .	101
Referencing a Raw Data File . . . . .	102
DATA Step Statements for Reading Data . . . . .	104
Reading and Verifying the Data . . . . .	108

Creating and Modifying Variables . . . . .	111
Subsetting Data . . . . .	115
Reading Instream Data . . . . .	116
Creating a Raw Data File . . . . .	118
Reading Microsoft Excel Data . . . . .	121
LIBNAME Statement Options . . . . .	129
Creating Excel Worksheets . . . . .	130
The IMPORT Procedure . . . . .	130
Chapter Quiz . . . . .	134
<b>Chapter 7 • Understanding DATA Step Processing . . . . .</b>	<b>139</b>
How SAS Processes Programs . . . . .	139
Compilation Phase . . . . .	141
Execution Phase . . . . .	144
Debugging a DATA Step . . . . .	152
Testing Your Programs . . . . .	158
Chapter Quiz . . . . .	161
<b>Chapter 8 • Creating and Applying User-Defined Formats . . . . .</b>	<b>165</b>
The FORMAT Procedure . . . . .	165
Defining a Unique Format . . . . .	167
Associating User-Defined Formats with Variables . . . . .	169
Chapter Quiz . . . . .	172
<b>Chapter 9 • Producing Descriptive Statistics . . . . .</b>	<b>175</b>
Computing Statistics Using PROC MEANS . . . . .	176
Selecting Statistics . . . . .	177
Limiting Decimal Places . . . . .	180
Specifying Variables in PROC MEANS . . . . .	181
Group Processing Using the CLASS Statement . . . . .	182
Group Processing Using the BY Statement . . . . .	183
Creating a Summarized Data Set Using PROC MEANS . . . . .	184
Creating a Summarized Data Set Using PROC SUMMARY . . . . .	186
Producing Frequency Tables Using PROC FREQ . . . . .	187
Specifying Variables in PROC FREQ . . . . .	189
Creating Two-Way Tables . . . . .	191
Creating N-Way Tables . . . . .	192
Creating Tables in List Format . . . . .	194
Chapter Quiz . . . . .	198
<b>Chapter 10 • Creating Output with ODS . . . . .</b>	<b>203</b>
The Output Delivery System (ODS) . . . . .	204
Creating HTML Output with ODS . . . . .	206
Creating PDF Output with ODS . . . . .	215
Creating RTF Output with ODS . . . . .	220
Creating EXCEL Output with ODS . . . . .	222
Chapter Quiz . . . . .	228
<b>Chapter 11 • Creating and Managing Variables . . . . .</b>	<b>231</b>
Creating and Modifying Variables . . . . .	232
Assigning Values Conditionally . . . . .	234
Specifying Lengths for Variables . . . . .	238
Subsetting Data . . . . .	240
Assigning Permanent Labels and Formats . . . . .	243
Assigning Values Conditionally Using SELECT Groups . . . . .	245
Grouping Statements Using DO Groups . . . . .	248

Chapter Quiz . . . . .	250
<b>Chapter 12 • Reading SAS Data Sets . . . . .</b>	<b>255</b>
Reading a Single Data Set to Create Another . . . . .	255
Manipulating Data . . . . .	257
Using BY-Group Processing . . . . .	259
Writing Observations Explicitly . . . . .	263
Detecting the End of a Data Set . . . . .	264
Chapter Quiz . . . . .	273
<b>Chapter 13 • Combining SAS Data Sets . . . . .</b>	<b>277</b>
How to Prepare Your Data Sets . . . . .	278
Methods of Combining SAS Data Sets: The Basics . . . . .	278
One-to-One Reading: Details . . . . .	280
Concatenating: Details . . . . .	284
Appending: Details . . . . .	286
Interleaving: Details . . . . .	289
Match-Merging: Details . . . . .	291
Match-Merge Processing . . . . .	295
Renaming Variables . . . . .	300
Excluding Unmatched Observations . . . . .	302
Selecting Variables . . . . .	304
Chapter Quiz . . . . .	305
<b>Chapter 14 • Using Functions to Manipulate Data . . . . .</b>	<b>313</b>
The Basics of SAS Functions . . . . .	314
SAS Functions Syntax . . . . .	315
Converting Data with Functions . . . . .	316
Manipulating SAS Date Values with Functions . . . . .	323
Modifying Character Values with Functions . . . . .	340
Modifying Numeric Values with Functions . . . . .	360
Nesting SAS Functions . . . . .	362
Chapter Quiz . . . . .	362
<b>Chapter 15 • Processing Data with DO Loops . . . . .</b>	<b>367</b>
The Basics of DO Loops . . . . .	367
Constructing DO Loops . . . . .	370
Nesting DO Loops . . . . .	373
Iteratively Processing Observations from a Data Set . . . . .	375
Conditionally Executing DO Loops . . . . .	376
Using Conditional Clauses with the Iterative DO Statement . . . . .	377
Chapter Quiz . . . . .	379
<b>Chapter 16 • Processing Data with Arrays . . . . .</b>	<b>383</b>
The Basics of SAS Arrays . . . . .	383
Creating One-Dimensional Arrays . . . . .	384
Expanding Your Use of Arrays . . . . .	391
Chapter Quiz . . . . .	397
<b>Chapter 17 • Reading Raw Data in Fixed Fields . . . . .</b>	<b>401</b>
Identifying the Type of Numeric Data . . . . .	401
Using Formatted Input . . . . .	403
Using Informats . . . . .	406
Using Record Formats . . . . .	410
Chapter Quiz . . . . .	413

<b>Chapter 18 • Reading and Creating Raw Data in Free-Format</b> . . . . .	<b>417</b>
Free-Format Data . . . . .	417
Reading Standard Data with List Input . . . . .	418
Specifying the Length of Character Variables . . . . .	421
Reading Free-Format Data with Non-Blank Delimiters and Missing Values . . . . .	424
Reading Nonstandard Data with List Input . . . . .	431
Creating Free-Format Data . . . . .	436
Write a Comma-Delimited File Using Formats . . . . .	439
Chapter Quiz . . . . .	441
<b>Chapter 19 • SAS Date and Time Values</b> . . . . .	<b>447</b>
Reading Dates and Times with Informats . . . . .	447
Using Dates and Times in Calculations . . . . .	451
Displaying Date and Time Values with Formats . . . . .	456
Chapter Quiz . . . . .	458
<b>Chapter 20 • Creating a Single Observation from Multiple Raw Data Records</b> . . . . .	<b>461</b>
A Word About Creating a Single Observation . . . . .	461
Using Line Pointer Controls . . . . .	462
Reading Multiple Records Sequentially . . . . .	462
Reading Multiple Records Non-Sequentially . . . . .	469
Combining Line Pointer Controls . . . . .	473
Chapter Quiz . . . . .	474
<b>Chapter 21 • Creating Multiple Observations from a Single Raw Data Record</b> . . . . .	<b>479</b>
A Word About Creating Multiple Observations . . . . .	479
Reading Repeating Blocks of Data . . . . .	480
Reading the Same Number of Repeating Fields . . . . .	487
Reading a Varying Number of Repeating Fields . . . . .	495
Chapter Quiz . . . . .	501
<b>Chapter 22 • Conditioning Raw Data Files</b> . . . . .	<b>507</b>
A Word About Conditioning Raw Data Files . . . . .	507
Creating One Observation per Detail Record . . . . .	508
Creating One Observation per Header Record . . . . .	515
Processing a DATA Step That Creates One Observation per Header Record . . . . .	520
Chapter Quiz . . . . .	522
<b>Appendix 1 • Quiz Answer Keys</b> . . . . .	<b>527</b>
Chapter 2: Basic Concepts . . . . .	527
Chapter 3: Setting Up Your SAS Session . . . . .	528
Chapter 4: Identifying and Correcting Errors . . . . .	529
Chapter 5: Creating List Reports . . . . .	531
Chapter 6: Creating SAS Data Sets from External Files . . . . .	532
Chapter 7: Understanding DATA Step Processing . . . . .	533
Chapter 8: Creating and Applying User-Defined Formats . . . . .	534
Chapter 9: Producing Descriptive Statistics . . . . .	535
Chapter 10: Creating Output with ODS . . . . .	536
Chapter 11: Creating and Managing Variables . . . . .	537
Chapter 12: Reading SAS Data Sets . . . . .	538
Chapter 13: Combining SAS Data Sets . . . . .	539
Chapter 14: Using Functions to Manipulate Data . . . . .	541
Chapter 15: Processing Data with DO Loops . . . . .	542
Chapter 16: Processing Data with Arrays . . . . .	542
Chapter 17: Reading Raw Data in Fixed Fields . . . . .	543
Chapter 18: Reading and Creating Raw Data in Free-Format . . . . .	544

Chapter 19: SAS Date and Time Values .....	545
Chapter 20: Creating a Single Observation from Multiple Raw Data Records .....	546
Chapter 21: Creating Multiple Observations from a Single Raw Data Record .....	547
Chapter 22: Conditioning Raw Data Files .....	548
<b>Index</b> .....	<b>551</b>





# How to Prepare for the SAS Base Programming for SAS®9 Exam

---

## Requirements and Details

### *Requirements*

To complete examples in this book, you must have access to Base SAS, SAS Enterprise Guide, or SAS Studio. See [Chapter 1, “Setting Up Practice Data,”](#) to ensure you have proper access.

### *Exam Objectives and Updates to This Book*

The current exam objectives and a list of any updates to this book are available at [www.sas.com/certify](http://www.sas.com/certify). Exam objectives are subject to change.

### *Take a Practice Exam*



Practice exams are available for purchase through SAS and Pearson VUE. For more information about practice exams, see [www.sas.com/base\\_programmer\\_cert](http://www.sas.com/base_programmer_cert).

### *Registering for the Exam*

To register for the official SAS Base Programming for SAS®9 exam, see the SAS Global Certification website at [www.sas.com/certify](http://www.sas.com/certify).

### *Additional Resources for Learning SAS Programming*

#### From SAS Software

- |               |   |
|---------------|---|
| Help          | <ul style="list-style-type: none"> <li>• SAS®9: Select <b>Help</b> ⇒ <b>SAS Help and Documentation</b>.</li> <li>• SAS Enterprise Guide: Select <b>Help</b> ⇒ <b>SAS Enterprise Guide Help</b>.</li> <li>• SAS Studio: Select the Help icon .</li> </ul>             |
| Documentation | <ul style="list-style-type: none"> <li>• SAS®9: Select <b>Help</b> ⇒ <b>SAS Help and Documentation</b>.</li> <li>• SAS Enterprise Guide: Access online documentation on the web.</li> <li>• SAS Studio: Select the Help icon  and then click <b>Help</b>.</li> </ul> |
-

On the Web	
Base SAS Glossary	<a href="http://support.sas.com/baseglossary">support.sas.com/baseglossary</a>
Bookstore	<a href="http://www.sas.com/books">www.sas.com/books</a>
Certification	<a href="http://www.sas.com/certify">www.sas.com/certify</a>
Community	<a href="http://communities.sas.com">communities.sas.com</a>
Knowledge Base	<a href="http://support.sas.com/notes">support.sas.com/notes</a>
Learning Center	<a href="http://www.sas.com">www.sas.com</a> and click <b>Learn</b> . Then select <b>Get Started Learning SAS</b> .
SAS Documentation	<a href="http://support.sas.com/documentation">support.sas.com/documentation</a> <a href="http://documentation.sas.com">documentation.sas.com</a>
SAS Global Academic Program	<a href="http://www.sas.com">www.sas.com</a> and click <b>Learn</b> . Then select <b>For Students and Educators</b> .
SAS OnDemand	<a href="http://support.sas.com/ondemand/">support.sas.com/ondemand/</a>
Training	<a href="http://www.sas.com/training">www.sas.com/training</a>
Technical Support	<a href="http://support.sas.com">support.sas.com</a> . Then select <b>Technical Support</b> .

---

## Syntax Conventions

In this book, SAS syntax looks like this example:

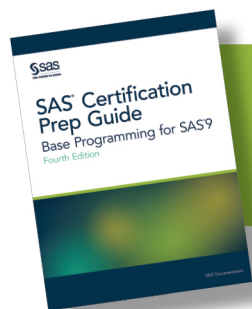
```
DATA output-SAS-data-set  
    (DROP=variables(s) | KEEP=variables(s));  
    SET SAS-data-set <options>;  
    BY variable(s)  
RUN;
```

Here are the conventions that are used in the example:

- **DATA**, **DROP=**, **KEEP=**, **SET**, **BY**, and **RUN** are in uppercase bold because they must be spelled as shown.
- *output-SAS-data-set*, *variable(s)*, *SAS-data-set*, and *options* are in italics because each represents a value that you supply.
- <*options*> is enclosed in angle brackets because it is optional syntax.
- **DROP=** and **KEEP=** are separated by a vertical bar ( | ) to indicate that they are mutually exclusive.

The example syntax that is shown in this book includes only what you need to know in order to prepare for the certification exam. For complete syntax, see the appropriate SAS reference guide.





An Introduction to SAS® Certification Guide: Base Programming for SAS®9, Fourth Edition. Full book available for purchase [here](#).

## Chapter 2

# Basic Concepts

---

<b>Getting Started</b> .....	<b>6</b>
<b>The Basics of the SAS Language</b> .....	<b>6</b>
SAS Statements .....	6
Global Statements .....	6
DATA Step .....	6
PROC Step .....	7
A Simple SAS Program .....	7
Processing SAS Programs .....	8
Log Messages .....	8
Results of Processing .....	9
<b>SAS Libraries</b> .....	<b>11</b>
Definition .....	11
Predefined SAS Libraries .....	11
Defining Libraries .....	11
How SAS Files Are Stored .....	12
Storing Files Temporarily or Permanently .....	12
<b>Referencing SAS Files</b> .....	<b>13</b>
Referencing Permanent SAS Data Sets .....	13
Referencing Temporary SAS Files .....	14
Rules for SAS Names .....	14
<b>SAS Data Sets</b> .....	<b>15</b>
Overview of Data Sets .....	15
Descriptor Portion .....	15
Data Portion .....	16
Variable Attributes .....	17
Variable Names .....	18
Type .....	19
Length .....	20
Format .....	20
Informat .....	21
Label .....	21
SAS Indexes .....	22
Extended Attributes .....	22
<b>Chapter Quiz</b> .....	<b>22</b>

---

## Getting Started

In the SAS Base Programming for SAS®9 exam, you are not tested on the details of running SAS software in the various environments. However, you might find such information useful when working with the practice data.

You can access a brief overview on the windows and menus of the SAS windowing environment, Enterprise Guide, and SAS Studio at <http://video.sas.com/>. From **Categories** select **How To Tutorials** ⇒ **Programming**. Select the video for your SAS environment. Other tutorials are available from the SAS website.

---

## The Basics of the SAS Language

### SAS Statements

A SAS statement is a type of SAS language element that is used to perform a particular operation in a SAS program or to provide information to a SAS program. SAS statements are free-format. This means that they can begin and end anywhere on a line, that one statement can continue over several lines, and that several statements can be on the same line. Blank or special characters separate words in a SAS statement.

**TIP** You can specify SAS statements in uppercase or lowercase. In most situations, text that is enclosed in quotation marks is case sensitive.

Here are two important rules for writing SAS programs:

- A SAS statement ends with a semicolon.
- A statement usually begins with a SAS keyword.

There are two types of SAS statements:

- statements that are used in DATA and PROC steps
- statements that are global in scope and can be used anywhere in a SAS program

### Global Statements

Global statements are used anywhere in a SAS program and stay in effect until changed or canceled, or until the SAS session ends. Here are some common global statements: TITLE, LIBNAME, OPTIONS, and FOOTNOTE.

### DATA Step

The DATA step creates or modifies data. The input for a DATA step can be of several types, such as raw data or a SAS data set. The output from a DATA step can be of several types, such as a SAS data set or a report. A SAS data set is a data file that is formatted in a way that SAS can understand.

For example, you can use DATA steps to do the following:

- put your data into a SAS data set

- compute values
- check for and correct errors in your data
- produce new SAS data sets by subsetting, supersetting, merging, and updating existing data sets

## PROC Step

The PROC (procedure) step analyzes data, produces output, or manages SAS files. The input for a PROC step is usually a SAS data set. The output from a PROC step can be of several types, such as a report or an updated SAS data set.

For example, you can use PROC steps to do the following:

- create a report that lists the data
- produce descriptive statistics
- create a summary report
- produce plots and charts

## A Simple SAS Program

This program uses an existing SAS data set to create a new SAS data set containing a subset of the original data set. It then prints a listing of the new data set using PROC PRINT.

```
data sasuser.admit2;
  set sasuser.admit;
  where age>39;
run;
proc print data=sasuser.admit2;
run;
```

The sample SAS program contains a DATA step and a PROC step. The DATA step produced a new SAS data set. Only those observations with an age value greater than 39 are written to the new SAS data set.

A DATA step begins with a DATA statement, which begins with the keyword DATA. A PROC step begins with a PROC statement, which begins with the keyword PROC. The sample program contains the following statements:

**Table 2.1** SAS Program Statements

Statements	Sample Program Code
DATA statement	data sasuser.admit2;
SET statement	set sasuser.admit;
Additional programming statements	where age>39;
RUN statement	run;
PROC PRINT statement	proc print data=sasuser.admit2;

Statements	Sample Program Code
RUN statement	run;

## Processing SAS Programs

When you submit a SAS program, SAS begins reading the statements and checking them for errors.

DATA and PROC statements signal the beginning of a new step. The RUN statement (for most procedures and the DATA step) and the QUIT statement (for some procedures) mark step boundaries. The beginning of a new step (DATA or PROC) also implies the end of the previous step. At a step boundary, SAS executes any statements that have not previously executed and ends the step. In the sample program, each step ends with a RUN statement.

```
data sasuser.admit2;
    set sasuser.admit;
    where age>39;
run;
proc print data=sasuser.admit2;
run;
```

**TIP** The RUN statement is not required between steps in a SAS program. It is a best practice to use a RUN statement because it can make the SAS program easier to read and the SAS log easier to understand when debugging.

## Log Messages

The SAS log collects messages about the processing of SAS programs and about any errors that occur. Each time a step is executed, SAS generates a log of the processing activities and the results of the processing.

When SAS processes the sample program, it produces the log messages shown below. Notice that you get separate sets of messages for each step in the program.



**Log 2.1 SAS Log Messages for Each Program Step**

```

5  data sasuser.admit2;
6      set sasuser.admit;
7      where age>39;
8  run;

NOTE: There were 10 observations read from the data set SASUSER.ADMIT.
      WHERE age>39;
NOTE: The data set SASUSER.ADMIT2 has 10 observations and 9 variables.
NOTE: DATA statement used (Total process time):
      real time          0.00 seconds
      cpu time           0.00 seconds

9  proc print data=sasuser.admit2;
NOTE: Writing HTML Body file: sashtml.htm
10 run;

NOTE: There were 10 observations read from the data set SASUSER.ADMIT2.
NOTE: PROCEDURE PRINT used (Total process time):
      real time          0.35 seconds
      cpu time           0.24 seconds

```

**Results of Processing****The DATA Step**

Suppose you submit the sample program below:

```

data sasuser.admit2;
    set sasuser.admit;
    where age>39;
run;

```

When the program is processed, it creates a new SAS data set (sasuser.admit2) containing only those observations with age values greater than 39. The DATA step creates a new data set and produces messages in the SAS log, but it does not create a report or other output.

**The PROC Step**

If you add a PROC PRINT step to this same example, the program produces the same new data set as before, but it also creates the following report, which is displayed in HTML:

```

data sasuser.admit2;
    set sasuser.admit;
    where age>39;
run;
proc print data=sasuser.admit2;
run;

```

*Note:* The default output in SAS Enterprise Guide is SAS Report. To change the default output in SAS Enterprise Guide to HTML, click **Tools** and select **Options** ⇒ **Results** ⇒ **Results General**. Then select HTML. Ensure that you have cleared SAS Report.

**Figure 2.1** PRINT Procedure Output

The SAS System									
Obs	ID	Name	Sex	Age	Date	Height	Weight	ActLevel	Fee
1	2523	Johnson, R	F	43	31	63	137	MOD	149.75
2	2539	LaMance, K	M	51	4	71	158	LOW	124.80
3	2568	Eberhardt, S	F	49	27	64	172	LOW	124.80
4	2571	Nunnelly, A	F	44	19	66	140	HIGH	149.75
5	2575	Quigley, M	F	40	8	69	163	HIGH	124.80
6	2578	Cameron, L	M	47	5	72	173	MOD	124.80
7	2579	Underwood, K	M	60	22	71	191	LOW	149.75
8	2584	Takahashi, Y	F	43	29	65	123	MOD	124.80
9	2589	Wilcox, E	F	41	16	67	141	HIGH	149.75
10	2595	Warren, C	M	54	7	71	183	MOD	149.75

**Other Procedures**

SAS programs often invoke procedures that create output in the form of a report, as is the case with the FREQ procedure:

```
proc freq data=sashelp.cars;
  table origin*DriveTrain;
run;
```

**Figure 2.2** FREQ Procedure Output

The FREQ Procedure					
Frequency Percent Row Pct Col Pct	Table of Origin by DriveTrain				
	Origin	DriveTrain			Total
		All	Front	Rear	
<b>Asia</b>	34	99	25	158	
	7.94	23.13	5.84	36.92	
	21.52	62.66	15.82		
	36.96	43.81	22.73		
<b>Europe</b>	36	37	50	123	
	8.41	8.64	11.68	28.74	
	29.27	30.08	40.65		
	39.13	16.37	45.45		
<b>USA</b>	22	90	35	147	
	5.14	21.03	8.18	34.35	
	14.97	61.22	23.81		
	23.91	39.82	31.82		
<b>Total</b>	92	226	110	428	
	21.50	52.80	25.70	100.00	

Other SAS programs perform tasks such as sorting and managing data, which have no visible results except for messages in the log. (All SAS programs produce log messages, but some SAS programs produce only log messages.)

```
proc copy in=sasuser out=work;
  select admit;
run;
```

**Log 2.2 SAS Log: COPY Procedure Output**

```

11  proc copy in=sasuser out=work;
12      select admit;
13  run;

```

```

NOTE: Copying SASUSER.ADMIT to WORK.ADMIT (memtype=DATA).
NOTE: There were 21 observations read from the data set SASUSER.ADMIT.
NOTE: The data set WORK.ADMIT has 21 observations and 9 variables.
NOTE: PROCEDURE COPY used (Total process time):
      real time          0.02 seconds
      cpu time           0.01 seconds

```

---

## SAS Libraries

**Definition**

A SAS library contains one or more files that are defined, recognized, and accessible by SAS, and that are referenced and stored as a unit. One special type of file is called a *catalog*. In SAS libraries, catalogs function much like subfolders for grouping other members.

**Predefined SAS Libraries**

By default, SAS defines several libraries for you:

**Sashelp**

a permanent library that contains sample data and other files that control how SAS works at your site. This is a Read-Only library.

**Sasuser**

a permanent library that contains SAS files in the Profile catalog and that stores your personal settings. This is also a convenient place to store your own files.

*Note:* If you are using SAS Studio or SAS University Edition, you might not have Write access to the Sasuser directory. To verify whether you have Write access, see [“Determine Whether You Have Write Access” on page 1](#).

**Work**

a temporary library for files that do not need to be saved from session to session.

You can also define additional libraries. When you define a library, you indicate the location of your SAS files to SAS. After you define a library, you can manage SAS files within it.

*Note:* If you are using SAS Studio, you might encounter Webwork library. Webwork is the default output library in interactive mode. For more information about the Webwork library, see *SAS Studio: User's Guide*.

**Defining Libraries**

To define a library, you assign a library name to it and specify the location of the files, such as a directory path.

You can also specify an engine, which is a set of internal instructions that SAS uses for writing to and reading from files in a library.

You can define SAS libraries using programming statements. For information about how to write LIBNAME statements to define SAS libraries, see [Assigning Librefs on page 28](#).

**TIP** Depending on your operating environment and the SAS/ACCESS products that you license, you can create libraries with various engines. Each engine enables you to read a different file format, including file formats from other software vendors.

When you delete a SAS library, the pointer to the library is deleted, and SAS no longer has access to the library. However, the contents of the library still exist in your operating environment.

## How SAS Files Are Stored

A SAS library is the highest level of organization for information within SAS.

For example, in the Windows and UNIX environments, a library is typically a group of SAS files in the same folder or directory.

The table below summarizes the implementation of SAS libraries in various operating environments.

**Table 2.2** *Environments and SAS Libraries*

Environment	Library Definition
Windows, UNIX	a group of SAS files that are stored in the same directory. Other files can be stored in the directory, but only the files that have SAS file extensions are recognized as part of the SAS library.
z/OS	a specially formatted host data set in which only SAS files are stored.

## Storing Files Temporarily or Permanently

Depending on the library name that you use when you create a file, you can store SAS files temporarily or permanently.

**Table 2.3** *Temporary and Permanent SAS Libraries*

Temporary SAS libraries last only for the current SAS session.	If you do not specify a library name when you create a file (or if you specify the library name Work), the file is stored in the temporary SAS library. When you end the session, the temporary library and all of its files are deleted.
--	---

Permanent SAS libraries are available to you during subsequent SAS sessions.

To store files permanently in a SAS library, specify a library name other than the default library name Work.

For example, by specifying the library name **sasuser** when you create a file, you specify that the file is to be stored in a permanent SAS library until you delete it.

## Referencing SAS Files

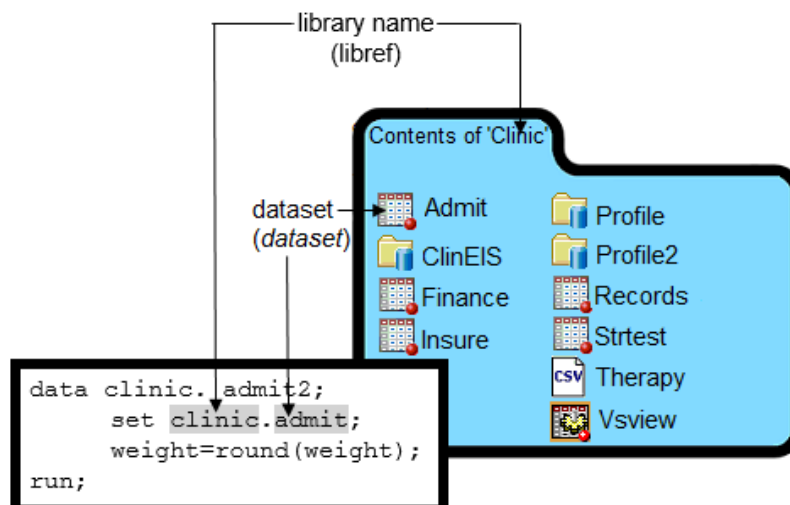
### Referencing Permanent SAS Data Sets

To reference a permanent SAS data set in your SAS programs, use a two-level name consisting of the library name and the data set name:

libref.dataset

In the two-level name, *libref* is the name of the SAS library that contains the data set, and *dataset* is the name of the SAS data set. A period separates the libref and data set name.

**Figure 2.3** Two-Level Permanent SAS Name



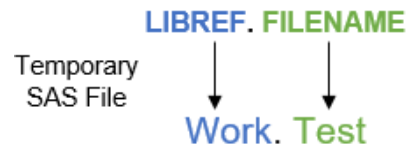
For example, suppose you want to create a new permanent SAS library named Clinic. In the sample program, Clinic.Admit is the two-level name for the SAS data set Admit, which is stored in the library named Clinic.

```
data clinic.admit2;
  set clinic.admit;
  weight =round(weight);
run;
```

## Referencing Temporary SAS Files

To reference temporary SAS files, you can specify the default libref `Work`, a period, and the data set name. For example, the two-level name, `Work.Test`, references the SAS data set named `Test` that is stored in the temporary SAS library `Work`.

**Figure 2.4** Two-Level Temporary SAS Library Name



Alternatively, you can use a one-level name (the data set name only) to reference a file in a temporary SAS library. When you specify a one-level name, the default libref `Work` is assumed. For example, the one-level name `Test` also references the SAS data set named `Test` that is stored in the temporary SAS library `Work`.

**Figure 2.5** One-Level Temporary SAS Library Name



## Rules for SAS Names

The following rules apply to the names of SAS data sets, variables, and libraries:

- They must begin with a letter (A-Z, either uppercase or lowercase) or an underscore (`_`).
- They can continue with any combination of numbers, letters, or underscores.
- They can be 1 to 32 characters long.
- SAS library names (librefs) can be 1 to 8 characters long.

These are examples of valid data set names and variable names:

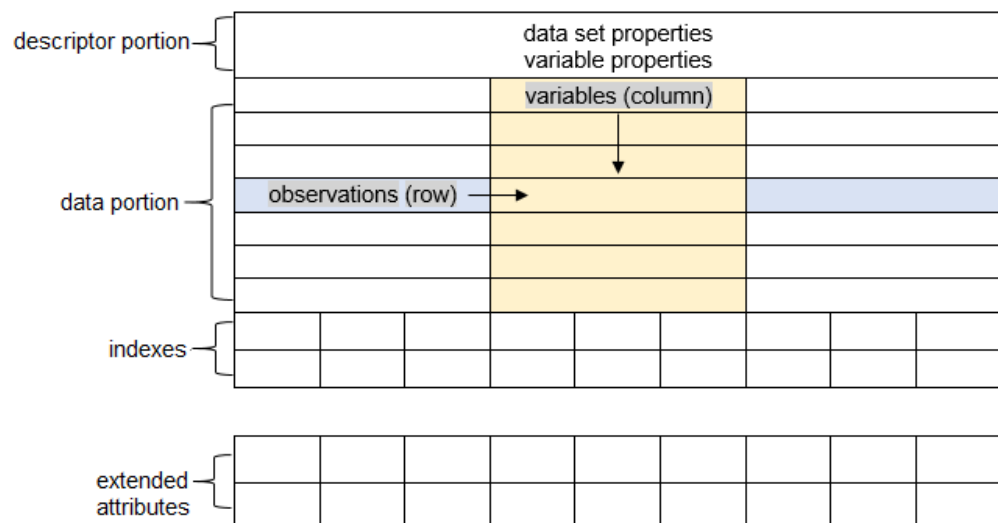
- Payroll
- LABDATA1995\_1997
- `_EstimatedTaxPayments3`

## SAS Data Sets

### Overview of Data Sets

A SAS data set is a file that consists of two parts: a descriptor portion and a data portion. Sometimes a SAS data set also points to one or more indexes, which enable SAS to locate rows in the data set more efficiently. (The data sets that are shown in this chapter do not contain indexes.) Extended attributes are user-defined attributes that further define a SAS data set.

**Figure 2.6** Parts of a SAS Data Set



### Descriptor Portion

The descriptor portion of a SAS data set contains information about the data set, including the following:

- the name of the data set
- the date and time that the data set was created
- the number of observations
- the number of variables

The table below lists part of the descriptor portion of the data set `sasuser.insure`, which contains insurance information for patients who are admitted to a wellness clinic.

**Table 2.4** Descriptor Portion of Attributes in a SAS Data Set

Data Set Name:	SASUSER.INSURE
Member Type:	DATA

Engine:	V9
Created:	10:05 Thursday, February 16, 2017
Observations:	21
Variables:	7
Indexes:	0
Observation Length:	64

## Data Portion

### Data Portion Overview

The data portion of a SAS data set is a collection of data values that are arranged in a rectangular table. In the example below, the company **MUTUALITY** is a data value, Policy **32668** is a data value, and so on.

**Figure 2.7** Parts of a SAS Data Set: Data Portion

ID	Name	Policy	Company	PctInsured	Total	BalanceDue
2458	Murray, W	32668	MUTUALITY	100	98.64	0.00
2462	Almers, C	95824	RELIABLE	80	780.23	156.05
2501	Bonaventure, T	87795	A&R	80	47.38	9.48
2523	Johnson, R	39022	ACME	50	122.07	61.04

### Observations (Rows)

Observations (also called rows) in the data set are collections of data values that usually relate to a single object. The values **2458**, **Murray W**, **32668**, **MUTUALITY**, **100**, **98.64**, and **0.00** comprise a single observation in the data set shown below.

**Figure 2.8** Parts of a SAS Data Set: Observations

	ID	Name	Policy	Company	PctInsured	Total	BalanceDue
Observation	2458	Murray, W	32668	MUTUALITY	100	98.64	0.00
	2462	Almers, C	95824	RELIABLE	80	780.23	156.05
	2501	Bonaventure, T	87795	A&R	80	47.38	9.48
	2523	Johnson, R	39022	ACME	50	122.07	61.04

This data set has 21 observations, each containing information about an individual. To view the full descriptor portion of this data set, see [Table 2.4 on page 15](#). A SAS data set can store any number of observations.



### Variables (Columns)

Variables (also called columns) in the data set are collections of values that describe a particular characteristic. The values 2458, 2462, 2501, and 2523 comprise the variable ID in the data set shown below.

**Figure 2.9** Parts of a SAS Data Set: Variables

ID	Name	Policy	Company	PctInsured	Total	BalanceDue
2458	Murray, W	32668	MUTUALITY	100	98.64	0.00
2462	Almers, C	95824	RELIABLE	80	780.23	156.05
2501	Bonaventure, T	87795	A&R	80	47.38	9.48
2523	Johnson, R	39022	ACME	50	122.07	61.04

This data set contains seven variables: ID, Name, Policy, Company, PctInsured, Total, and BalanceDue. A SAS data set can store thousands of variables.

### Missing Values

Every variable and observation in a SAS data set must have a value. If a data value is unknown for a particular observation, a missing value is recorded in the SAS data set. A period (.) is the default value for a missing numeric value, and a blank space is the default value for a missing character value.

**Figure 2.10** Parts of a SAS Data Set: Missing Data Values

ID	Name	Policy	Company	PctInsured	Total	BalanceDue
2458	Murray, W	32668	MUTUALITY	100	98.64	0.00
2462	Almers, C	95824	RELIABLE	80	780.23	156.05
2501	Bonaventure, T	87795	A&R	.	47.38	9.48
2523	Johnson, R	39022	ACME	50	122.07	61.04

Missing Value

### Variable Attributes

In addition to general information about the data set, the descriptor portion contains information about the properties of each variable in the data set. The properties information includes the variable's name, type, length, format, informat, and label.

When you write SAS programs, it is important to understand the attributes of the variables that you use. For example, you might need to combine SAS data sets that contain same-named variables. In this case, the variables must be the same type (character or numeric). If the same-named variables are both character variables, you still need to check that the variable lengths are the same. Otherwise, some values might be truncated.

Here is a partial listing of the attribute information in the descriptor portion of the SAS data set sasuser.insure.

**Table 2.5** Variable Attributes in the Descriptor Portion of a SAS Data Set sasuser.insure

Variable	Type	Length	Format	Informat	Label
Policy	Char	8			Policy Number
Total	Num	8	DOLLAR8.2	COMMA10.	Total Balance
Name	Char	20			Patient Name

## Variable Names

### Rules for Variable Names

Each variable has a name that conforms to SAS naming conventions. Variable names follow the same rules as SAS data set names.

- They can be 1 to 32 characters long.
- They must begin with a letter (A-Z, either uppercase or lowercase) or an underscore (\_).
- They can continue with any combination of numbers, letters, or underscores.

**Table 2.6** Variable Name Attributes

Variable	Type	Length	Format	Informat	Label
Policy	Char	8			Policy Number
Total	Num	8	DOLLAR8.2	COMMA10.	Total Balance
Name	Char	20			Patient Name

### VALIDVARNAME= System Option

*Note:* If you use characters other than the ones that are valid when the VALIDVARNAME system option is set to V7 (letters of the Latin alphabet, numerals, or underscores), then you must express the variable name as a name literal and you must set VALIDVARNAME=ANY. If the name includes either a percent sign (%) or an ampersand (&), then you must use single quotation marks in the name literal in order to avoid interaction with the SAS macro facility.

VALIDVARNAME specifies the rules for valid SAS variable names that can be created and processed during a SAS session.

Syntax, VALIDVARNAME=

**VALIDVARNAME=** *V7|UPCASE|ANY*

*V7* specifies that variable names must follow these rules:

- SAS variable names can be up to 32 characters long.
- The first character must begin with a letter of the Latin alphabet (A - Z, either uppercase or lowercase) or an underscore (\_). Subsequent characters can be letters of the Latin alphabet, numerals, or underscores.
- Trailing blanks are ignored. The variable name alignment is left-justified.
- A variable name cannot contain blanks or special characters except for an underscore.
- A variable name can contain mixed-case letters. SAS stores and writes the variable name in the same case that is used in the first reference to the variable. However, when SAS processes a variable name, SAS internally converts it to uppercase. Therefore, you cannot use the same variable name with a different combination of uppercase and lowercase letters to represent different variables. For example, **cat**, **Ca**t, and **CAT** all represent the same variable.
- Do not assign variables the names of special SAS automatic variables (such as **\_N\_** and **\_ERROR\_**) or variable list names (such as **\_NUMERIC\_**, **\_CHARACTER\_**, and **\_ALL\_**) to variables.

*UPCASE* specifies that the variable name follows the same rules as *V7*, except that the variable name is uppercase, as in earlier versions of SAS.

*ANY* specifies that SAS variable names must follow these rules:

- The name can begin with or contain any characters, including blanks, national characters, special characters, and multi-byte characters.
- The name can be up to 32 bytes long.
- The name cannot contain any null bytes.
- Leading blanks are preserved, but trailing blanks are ignored.
- The name must contain at least one character. A name with all blanks is not permitted.
- A variable name can contain mixed-case letters. SAS stores and writes the variable name in the same case that is used in the first reference to the variable. However, when SAS processes a variable name, SAS internally converts it to uppercase. Therefore, you cannot use the same variable name with a different combination of uppercase and lowercase letters to represent different variables. For example, **cat**, **Ca**t, and **CAT** all represent the same variable.

**CAUTION:**

**Throughout SAS, using the name literal syntax with SAS member names that exceed the 32-byte limit or have excessive embedded quotation marks might cause unexpected results.** The VALIDVARNAME=ANY system option enables compatibility with other DBMS variable (column) naming conventions, such as allowing embedded blanks and national characters.

## Type

A variable's type is either character or numeric.

- Character variables, such as Name (shown below), can contain any values.
- Numeric variables, such as Total (shown below), can contain only numeric values (the numerals 0 through 9, +, -, ., and E for scientific notation).

**Table 2.7** Type Attribute

Variable	Type	Length	Format	Informat	Label
Policy	Char	8			Policy Number
Total	Num	8	DOLLAR8.2	COMMA10.	Total Balance
Name	Char	20			Patient Name

## Length

A variable's length (the number of bytes used to store it) is related to its type.

- Character variables can be up to 32,767 bytes long. In the example below, Name has a length of 20 characters and uses 20 bytes of storage.
- All numeric variables have a default length of 8 bytes. Numeric values are stored as floating-point numbers in 8 bytes of storage.

**Table 2.8** Length Attribute

Variable	Type	Length	Format	Informat	Label
Policy	Char	8			Policy Number
Total	Num	8	DOLLAR9.2	COMMA10.	Total Balance
Name	Char	20			Patient Name

## Format

Formats are variable attributes that affect how data values are written. Formats do not change the stored value in any way; they merely control how that value is displayed. SAS software offers a variety of character, numeric, and date and time formats. You can also create and store your own formats. To write values out using a particular form, you select the appropriate format.

For example, to display the value 1234 as \$1,234.00 in a report, you can use the DOLLAR9.2 format, as shown for Total below.

**Table 2.9** Format Attribute

Variable	Type	Length	Format	Informat	Label
Policy	Char	8			Policy Number

Variable	Type	Length	Format	Informat	Label
Total	Num	8	DOLLAR9.2	COMMA10.	Total Balance
Name	Char	20			Patient Name

Usually you have to specify the maximum width ( $w$ ) of the value to be written. Depending on the particular format, you might also need to specify the number of decimal places ( $d$ ) to be written. For example, to display the value **5678** as 5,678.00 in a report, you can use the COMMA8.2 format, which specifies a width of 8 including 2 decimal places.

**TIP** You can permanently assign a format to a variable in a SAS data set, or you can temporarily specify a format in a PROC step to determine how the data values appear in output.

## Informat

Whereas formats write values out using some particular form, informats read data values in certain forms into standard SAS values. Informats determine how data values are read into a SAS data set. You must use informats to read numeric values that contain letters or other special characters.

For example, the numeric value **\$12,345.00** contains two special characters, a dollar sign (\$) and a comma (.). You can use an informat to read the value while removing the dollar sign and comma, and then store the resulting value as a standard numeric value. For Total below, the COMMA10. informat is specified.

**Table 2.10** Informat Attribute

Variable	Type	Length	Format	Informat	Label
Policy	Char	8			Policy Number
Total	Num	8	DOLLAR9.2	COMMA10.	Total Balance
Name	Char	20			Patient Name

## Label

A variable can have a label, which consists of descriptive text up to 256 characters long. By default, many reports identify variables by their names. You might want to replace the name with more descriptive information about the variable by assigning a label to the variable.

For example, you can label Policy as Policy Number, Total as Total Balance, and Name as Patient Name to display these labels in reports.

**Table 2.11** Label Attribute

Variable	Type	Length	Format	Informat	Label
Policy	Char	8			Policy Number
Total	Num	8	DOLLAR9.2	COMMA10.	Total Balance
Name	Char	20			Patient Name

You can use labels to shorten long variable names in your reports.

## SAS Indexes

An index is a separate file that you can create for a SAS data file in order to provide direct access to a specific observation. The index file has the same name as its data file and a member type of INDEX. Indexes can provide faster access to specific observations, particularly when you have a large data set. The purpose of SAS indexes is to optimize WHERE expressions and to facilitate BY-group processing. For more information, see [“Specifying WHERE Expressions” on page 72](#) and see [“Group Processing Using the BY Statement” on page 183](#).

## Extended Attributes

Extended attributes are user-defined metadata that is defined on a data set or on a variable (column). Extended attributes are represented as name-value pairs and are created using the DATASETS procedure.

**TIP** You can use PROC CONTENTS to display data set and variable extended attributes.

---

## Chapter Quiz

Select the best answer for each question. Check your answers using the answer key in the appendix.

- How many observations and variables does the data set below contain?

Name	Sex	Age
Picker	M	32
Fletcher		28
Romano	F	.
Choi	M	42

- 3 observations, 4 variables
- 3 observations, 3 variables

- c. 4 observations, 3 variables  
 d. cannot tell because some values are missing
2. How many program steps are executed when the program below is processed?

```
data user.tables;
  infile jobs;
  input date yyddmm8. name $ job $;
run;
proc sort data=user.tables;
  by name;
run;
proc print data=user.tables;
run;
```

- a. three  
 b. four  
 c. five  
 d. six
3. What type of variable is the variable AcctNum in the data set below?

AcctNum	Gender
3456_1	M
2451_2	
Romano	F
Choi	M

- a. numeric  
 b. character  
 c. can be either character or numeric  
 d. cannot tell from the data shown
4. What type of variable is the variable Wear in the data set below?

Brand	Wear
Acme	43
Ajax	34
Atlas	.

- a. numeric  
 b. character  
 c. can be either character or numeric  
 d. cannot tell from the data shown
5. With the system option VALIDVARNAME=ANY, which of the following variable names is valid?

- a. 4BirthDate
  - b. \$Cost
  - c. \_Items\_
  - d. Tax-Rate
  - e. All of the above
6. Which of the following files is a permanent SAS file?
- a. Sashelp.PrdSale
  - b. Sasuser.MySales
  - c. Profits.Quarter1
  - d. all of the above
7. In a DATA step, how can you reference a temporary SAS data set named Forecast?
- a. Forecast
  - b. Work.Forecast
  - c. Sales.Forecast (after assigning the libref Sales)
  - d. only a and b above
8. What is the default length for the numeric variable Balance?

Name	Balance
Adams	105.73
Geller	107.89
Martinez	97.45
Noble	182.50

- a. 5
  - b. 6
  - c. 7
  - d. 8
9. How many statements does the following SAS program contain?
- ```
proc print data=clinic.admit
            label double;
var ID Name Sex Age; where Sex=F;
label Sex='Gender'; run;
```
- a. three
  - b. four
  - c. five
  - d. six
10. What is a SAS library?
- a. collection of SAS files, such as SAS data sets and catalogs
  - b. in some operating environments, a physical collection of SAS files



- c. a group of SAS files in the same folder or directory
- d. all of the above



# Index

---

## Special Characters

\_ALL\_ keyword 127, 385, 387  
 \_CHARACTER\_ keyword 385, 386  
 \_ERROR\_ automatic variable  
   DATA step iterations and 148, 266, 270  
   functionality 141  
   initializing variables 144  
   PUT statement and 160  
 \_N\_ automatic variable  
   DATA step processing and 147, 266,  
     269, 272  
   functionality 141, 516  
   PUT statement and 160  
 \_NULL\_ keyword 118  
 \_NUMERIC\_ keyword 385, 386  
 \_TEMPORARY\_ keyword 396  
 @ (trailing at-sign) 481, 488, 509  
 @@ (double trailing at-sign) 481  
 @n pointer control 403  
 \$BINARYw. informat 406  
 \$VARYINGw. informat 406  
 \$w. format 91  
 \$w. informat  
   ampersand modifier 432  
   functionality 406, 407  
 #n pointer control  
   combining pointer controls 473  
   reading records non-sequentially 469  
 +n pointer control 405

## A

ampersand modifier 431, 434  
 AND operator  
   examples 236  
   in logical operations 235  
   in SAS expressions 113  
   in WHERE statement, PRINT  
     procedure 73  
 APPEND procedure  
   examples 287  
   FORCE option 288  
   functionality 278, 286  
   requirements 287

appending data sets 278, 286  
 arguments in functions 315  
 arithmetic operators in SAS expressions  
   112  
 array elements  
   assigning initial values 394  
   creating temporary 396  
   referencing 387  
   specifying 385  
   variables lists as 385  
 ARRAY statement  
   arrays of character variables 393  
   assigning initial values to arrays 394  
   creating temporary array elements 396  
   creating variables 391  
   defining one-dimensional arrays 384  
   DO loop processing 389, 390  
   referencing array elements 387  
   specifying array name 385  
   specifying dimensions 385  
   specifying elements 385  
   syntax 384  
   variable lists as elements 385  
 arrays 384  
   concatenating names 392  
   creating one-dimensional 383  
   creating variables 391  
   defining 384  
   DO loop processing 389, 390  
   function arguments and 316  
   specifying dimensions 385  
   specifying names 385  
 assignment statements 113  
   conditional processing 235  
   DATA step processing 146, 268, 271  
   date constants 115  
   examples 113  
   positioning SUBSTR function 345  
   SAS expressions in 112  
 asterisk (\*) 191  
 attributes  
   *See variable attributes*  
 automatic variables  
   DATA step processing 270

- PUT statement 160
  - testing programs 160
- B**
- BEST12. format 321
  - BESTw. format 180
  - blanks
    - compressing 359
  - browsers 37
    - preferred web browser 38
  - BY clause, DO statement 370, 372
  - BY statement
    - DESCENDING option 294
    - group processing with 183, 259
    - interleaving data sets 278, 289
    - match-merging data sets 278, 291
    - PRINT procedure 77, 79
    - SORT procedure 75, 294
    - syntax 183
  - BY variables
    - finding observations in subgroups 261
    - interleaving data sets 289
- C**
- calculations
    - dates and times in 451
  - case sensitivity
    - format values 168
  - CATX function
    - functionality 349
    - syntax 349
  - CEIL function 360
  - character strings 159
    - PUT statement 159
    - searching 350, 351
    - specifying delimiters 341
    - testing programs 159
  - character variables 407
    - array processing and 386
    - creating arrays of 392
    - embedded blanks 431
    - informat support 407
    - reading range of 421
    - removing trailing blanks 347, 348
    - replacing 344
    - searching for strings 350
    - specifying value length 421
  - character-to-numeric conversions 316, 317
  - CLASS statement, MEANS procedure 182
  - cleaning data 155
  - CLM statistic 178
  - code editing windows
    - resubmitting revised programs 54
  - colon (:) modifier 431, 433
  - column input
    - mixing styles 439
    - nonstandard data values and 402
  - column pointer controls
    - @n 403
    - +n 405
    - functionality 404
  - columns
    - See variables
  - combining data sets 278
    - by appending 278, 286
    - by concatenating 278, 284
    - by interleaving 278, 289
    - by match-merging 278, 291
    - by one-to-one reading 278, 280
    - excluding unmatched observations 302
    - methods for 278
    - renaming variables 300
  - comma (,) 21, 394
  - COMMA10. informat 21
  - COMMA12.2 format 93
  - COMMA6. format 244
  - COMMA8.2 format 21
  - COMMA9. informat 320
  - COMMAw.d format 91, 92
  - COMMAw.d informat
    - example 406
    - functionality 408, 434
    - modify list input and 433
  - common errors
    - missing RUN statement 52
    - missing semicolon (;) 52
    - unbalanced quotation mark 52
  - comparison operators 235
  - compilation phase (DATA step)
    - data set variables 142
    - descriptor portion of data sets 143
    - diagnosing errors in 152
    - input buffer 141
    - match-merge processing 296
    - program data vector 141
    - reading data sets 266
    - syntax checking 142
  - COMPRESS function
    - compressing blanks 359
    - examples 359
  - compressing character strings
    - blanks 359
  - concatenating array names 392
  - concatenating data sets 278, 284, 285
  - concatenation operator (||) 321, 322
  - conditional processing
    - assigning variable values 234, 245
    - assignment statements 235

- comparison operators 235
  - DO groups 248
  - DO loops 376
  - iterative DO statement 377
  - logical operators 235
  - providing alternative actions 237
  - PUT statement and 161
  - SELECT groups 245
  - single observations per detail records 509
  - testing programs 161, 238
  - CONTAINS operator 73
  - CONTENTS procedure
    - reading Excel data 122, 127
    - VARNUM option 35
    - viewing library contents 31
  - CONTENTS statement, DATASETS procedure 35
  - converting data
    - See data conversion
  - counter variables 497
  - CROSSLIST option, TABLES statement (FREQ) 195
  - CSS statistic
    - MEANS procedure 178
  - current record, holding with line-hold specifier 481, 488
  - CV statistic
    - MEANS procedure 178
- D**
- data cleaning 155
  - data conversion 316
    - character-to-numeric 317
    - lower case 354
    - numeric-to-character 316
    - numeric-to-character conversion 321
    - upper case 353
  - data sets
    - See also combining data sets
    - See also match-merging data sets
    - BY-group processing 259
    - data portion 16
    - descriptor portion 15, 143
    - detecting end of 264
    - dropping and keeping variables 241
    - iteratively processing data 375
    - listing 109
    - manipulating data 257
    - missing values 17
    - naming 104
    - naming conventions 14
    - observations (rows) 16
    - reading 255, 266
    - specifying observations via system options 46
    - summarized using MEANS procedure 184
    - summarized using SUMMARY procedure 186
    - testing programs 159
    - variable attributes 17, 142
    - variables and 17
    - viewing descriptor information 35
  - DATA step
    - characteristics 7
    - checking processing 108
    - column input 105
    - compilation phase 141, 266, 296
    - creating data sets from raw data files 101
    - creating raw data files 118
    - creating/modifying variables 111
    - debugging 152
    - describing data in programs 106
    - execution phase 267, 297
    - functionality 139
    - invalid data 109
    - iterations of 148, 490
    - listing data sets 109
    - manipulating data 257
    - naming data sets 104
    - nonstandard numeric data in 105
    - PROC IMPORT 121
    - processing informats 409
    - reading Excel data 121, 122, 125
    - reading raw data files 109
    - repeating blocks of data 482
    - single observations per detail records 511
    - single observations per header records 520
    - specifying raw data files 104
    - specifying variable names 107
    - standard numeric data in 105
    - submitting 108
    - subsetting data 115
    - syntax 104
    - varying number of repeating fields 497
    - verifying data 108
    - writing 104, 125
  - data validation 155
  - DATALINES statement 116, 117
  - DATASETS procedure 33, 35
  - DATDIF function 325, 338
  - DATE function 325, 332
  - DATE7. format 93
  - DATE9. format 93, 327, 328
  - dates and times
    - displaying 482

- handling four-digit years 44
- handling two-digit years 42
- in calculations 451
- informat support 447
- manipulating for output 42
- manipulating with functions 323
- DATETIMEw. format 447
- DATETIMEw. informat 406, 450
- DATEw. format
  - examples 91, 447, 482
  - functionality 437
- DATEw. informat
  - examples 406
  - functionality 449
  - syntax 449
- DAY function
  - functionality 314
  - manipulating date values 326
  - syntax 326
  - typical use 325
- debugging
  - cleaning data 155
  - diagnosing errors in compilation phase 152
  - diagnosing errors in execution phase 152
  - validating data 155
- decimal places, limiting 180
- DELETE statement
  - example 240
  - in IF-THEN statement 240
- delimiters
  - DLM= option, FILE statement 437
  - DLM= option, INFILE statement 424, 429
  - DSD option, FILE statement 438
  - DSD option, INFILE statement 428
  - for SCAN function 341
  - free-format data 424, 429
  - specifying multiple 342
  - within quoted strings 426
- DESCENDING option
  - BY statement, SORT procedure 75
- descriptive statistics 176
  - creating summarized data sets 184, 186
  - creating tables in list format 194
  - group processing with BY statement 183
  - group processing with CLASS statement 182
  - limiting decimal places 180
  - procedure syntax 176
  - producing frequency tables 187, 191
  - selecting statistics 177
  - specifying variables in FREQ procedure 189
  - specifying variables in MEANS procedure 181
- detail record, single observation per
  - conditional processing 509
  - DATA step processing 511
  - displaying results 514
  - dropping variables 511
  - overview 508
  - reading detail records 510
  - retaining variable values 509
- DIM function 390
- DLM= option
  - FILE statement 437
  - INFILE statement 424, 429
- DO groups
  - indenting 249
  - iteratively processing data 373
  - nesting 249
  - single observations per header records 516
- DO loops
  - conditionally executing 376
  - constructing 368
  - counting iterations 371
  - decrementing 372
  - functionality 370
  - index variables 371, 372, 374, 388
  - INPUT statement example 490
  - iterative DO statement 377
  - nesting 373
  - processing array elements 389, 390
  - specifying series of items 372
- DO statement
  - See also* iterative DO statements
  - BY clause 370, 372
  - grouping statements 248
  - TO clause 369
- DO UNTIL statement 249, 376, 377
- DO WHILE statement
  - counter variables 497
  - executing 497
  - functionality 249, 376, 377, 496
  - syntax 377
- Document destination 204
- dollar sign (\$)
  - arrays of character variables 392
  - in format names 168
  - informats and 21, 407
  - name literals and 124, 125
- DOLLAR12.2 format 93
- DOLLAR8.2 format 20, 93
- DOLLAR9.2 format 93
- DOLLARw.d format 91
- DOUBLE option, PRINT procedure 82
- double spacing LISTING output 82
- double trailing at-sign (@@) 481

- DROP statement 242, 384
- DROP= data set option
  - assigning initial values to arrays 395
  - determining when to specify 258
  - examples 511, 520
  - selecting variables 241
- DSD option
  - FILE statement 438
  - INFILE statement 428
- E**
- END statement
  - assigning values conditionally 245
  - grouping statements 248
- end-of-file marker 150
- END= option, SET statement 264
- engines
  - See SAS engines
- eq (=) operator 235
- error handling 53
  - correcting common errors 52
  - error types 51
  - IF-THEN/ELSE statement 161
  - in DATA step compilation phase 152
  - in DATA step execution phase 152
  - interpreting messages 51
  - invalid data 109
  - invalid option 61
  - resubmitting revised programs 53
  - semicolon errors 57
  - unbalanced quotation marks 59, 60
  - validating or cleaning data 155
- Excel data
  - See Microsoft Excel data
- execution phase (DATA step)
  - diagnosing errors in 152
  - end of processing actions 146, 151
  - end-of-file marker 150
  - initializing variables 144
  - input data 144
  - input pointer 144
  - iterations of DATA step 148
  - match-merge processing 297
  - reading data sets 267
- expressions
  - See SAS expressions
- external files
  - See raw data files
- F**
- FILE statement
  - DATA step processing 270
  - DLM= option 437
  - DSD option 438
  - functionality 118
  - syntax 118
- FILENAME statement
  - creating data sets from raw data files 101, 102
  - defining aggregate storage location 103
  - describing data in programs 106
  - listing data sets 109
  - naming data sets 104
  - specifying raw data files 104
  - syntax 102
- filerefs
  - associating with external files 102
  - fully qualified filenames in 102, 103
  - in aggregate storage locations 103
- files
  - See raw data files
  - See SAS files
- FIND function
  - examples 352
  - functionality 351
  - syntax 351
- FIRST.variable
  - examples 259
  - finding observations in subgroups 261
  - values supported 259
- FIRSTOBS= system option 44
- fixed-length records 410
- FLOOR function 360
- FLOWOVER option, INFILE statement 496
- FMTLIB keyword 171
- FOOTNOTE statement
  - canceling 85
  - examples 84
  - modifying 85
  - quotation marks in 59
  - specifying in list reports 82
- FOOTNOTES command 83
- FOOTNOTES window 83
- FORCE option, APPEND procedure 288
- FORMAT procedure
  - FMTLIB keyword 171
  - functionality 165, 166
  - invoking 166
  - LIBRARY= option 166
  - syntax 166
  - VALUE statement 167, 168, 170
- FORMAT statement
  - array name restrictions 384
  - assigning formats to variables 170, 243, 457
  - displaying date/time values 482
  - formatting dates 327, 328
  - functionality 90
  - syntax 90

- formats 20
    - assigning permanent 243, 457
    - assigning to variables 170, 457
    - decimal places 92
    - defining unique 167
    - examples 93
    - field widths 92
    - for variables 90
    - functionality 90
    - permanently assigned 93
    - specifying 91
    - storing 166
    - storing permanently 166
    - writing numeric values 180
  - formatted input
    - @n pointer control 403
    - +n pointer control 405
    - mixing styles 439
    - modified list input comparison 435
    - reading columns in any order 404
    - syntax 403
  - forward slash (/)
    - specifying multiple delimiters 342
  - forward slash (/) pointer control
    - combining pointer controls 473
    - reading records sequentially 462
  - FRAME= option
    - syntax 210
  - free-format data
    - See raw data files
  - FREQ procedure
    - See also TABLES statement, FREQ procedure
    - detecting invalid data 155
    - producing frequency tables 187, 191
    - specifying variables 189
    - suppressing table information 196
    - syntax 155, 187
  - frequency tables
    - creating in list format 194
    - n-way 187, 192
    - one-way 187
    - suppressing information 196
    - two-way 191
  - functions
    - arguments 315
    - arrays and 315
    - character-to-numeric conversions 317
    - converting data 316
    - manipulating date/time values 323
    - syntax 315
    - target variables and 316
    - variable lists 315
- G**
- ge (>=) operator 235
  - group processing
    - finding observations in subgroups 261
    - with BY statement 183, 259
    - with CLASS statement 182
  - gt (>) operator 235
- H**
- header record, single observation per
    - DATA step processing 520
    - determining end of external file 518
    - DO group actions 516
    - overview 515
    - reading detail records 517
  - HEXw. informat 406
  - hierarchical files 507
    - creating observation per detail record 508
    - creating observation per header record 515
  - HIGH keyword 168
  - HTML destination 204
  - HTML Link and Path Options
    - URL= suboption 211
  - HTML output 36
    - creating 36
    - ODS overview 204
    - overview 206
    - viewing 37
  - HTML Output
    - Appearance of HTML 214
    - Frame Files 210
    - Link and Path Options 211, 212
    - Specify Link and Path 211
    - Table of Contents 208, 210
  - HTML Table of Contents
    - CONTENTS= option 210
  - hyphen (-) 342
  - hypothesis testing 178
- I**
- ID statement, PRINT procedure
    - BY statement and 79
    - VAR statement and 71
  - IF-THEN statement
    - assigning values conditionally 234
    - cleaning data 157
    - conditionally executing statements 510
    - DELETE statement in 240
    - DO groups 248
    - ELSE statement 237
    - examples 234
    - for flagging errors 161



- SELECT groups 245
  - single observations per header records 516, 517
  - syntax 234
  - testing programs 158
  - in operator 235
  - IN= data set option 302
  - indenting DO groups 249
  - INDEX function
    - functionality 350
    - syntax 350
  - index variables in DO loops 371, 372, 374, 388
  - INFILE statement
    - column input 105
    - creating data sets from raw data files 101
    - DATA step processing 144, 270
    - describing data in programs 106
    - DLM= option 424, 429
    - DSD option 428
    - FLOWOVER option 496
    - listing data sets 109
    - MISCOVER option 427, 496
    - OBS= option 108, 109
    - PAD option 412
    - SCANOVER option 496
    - single observations per header records 519
    - specifying raw data files 104
    - STOPOVER option 496
    - syntax 104, 519
    - TRUNCOVER option 496
  - informats 21
    - ampersand modifier 432
    - components 447
    - DATA step processing 409
    - modifying list input 435
    - reading character values 407
    - reading dates and times 447
    - reading numeric data 407
    - specifying 448
  - initializing variables 144, 233
  - input buffer 141, 148
  - INPUT function
    - character-to-numeric conversion 316, 319
    - examples 320
    - syntax 319
  - INPUT statement
    - creating data sets from raw data files 101
    - DATA step processing 144, 148
    - describing data in programs 106
    - DO loop example 490
    - examples 106
    - line-hold specifier 481, 489
    - listing data sets 109
    - mixing input styles 441
    - pointer controls 403, 405, 462, 469
    - processing informats 409
    - processing list input 419
    - specifying informats 448
    - syntax 106, 403, 405, 418, 448
    - variable-length records 411
  - INT function 360
  - INTCK function
    - examples 336
    - functionality 325, 335
    - syntax 335
  - interface library engines 30
  - interleaving data sets
    - example 290
    - functionality 278, 289
  - Internal Browser option 37
  - INTNX function 325, 337
  - invalid data 109, 155
  - invalid option 61
  - iterative DO statements 376
    - conditional clauses 377
    - conditional executing 376
    - DATA step example 490
    - DIM function 390
    - nesting DO loops 373
- J**
- JULIANw. informat 406
- K**
- KEEP statement 242, 384
  - KEEP= data set option
    - determining when to specify 258
    - selecting variables 241
  - KURTOSIS statistic, MEANS procedure 178
- L**
- LABEL option, PRINT procedure 88, 244
  - LABEL statement 243
    - array name restrictions 384
    - assigning labels in multiple 89
    - assigning labels in single 89
    - example 88
    - functionality 88
    - syntax 88
  - labels
    - assigning descriptive 88
    - assigning for variables 21

- assigning permanent 93, 243
  - LAST.variable
    - examples 259
    - finding observations in subgroups 261
    - values supported 259
  - LCLM statistic, MEANS procedure 178
  - le (<=) operator 235
  - leading blanks, removing 349
  - LEFT function 347
  - LENGTH statement
    - ampersand modifier 432
    - array name restrictions 384
    - examples 239
    - functionality 238, 342
    - specifying character value length 423
  - length, variable 20, 342
  - LIBNAME statement
    - assigning librefs 29
    - creating data sets from raw data files 101
    - defining SAS libraries 28
    - describing data in programs 106
    - listing data sets 109
    - naming data sets 104
    - reading Excel data 121
    - referencing files in other formats 30
    - specifying raw data files 104
    - syntax 28
  - libraries
    - See SAS libraries
  - LIBRARY= option, FORMAT procedure 166
  - librefs
    - assigning 28
    - defined 13
    - lifespan of 29
    - verifying 29
  - line pointer controls
    - / (forward slash) 462
    - #n 469
    - combining 473
    - functionality 462
    - reading records non-sequentially 469
    - reading records sequentially 462
  - line-hold specifiers
    - double trailing at-sign 481
    - overview 481
    - trailing at-sign 481, 488, 509
  - list input
    - See modified list input
  - LIST option, TABLES statement (FREQ) 194
  - list reports
    - creating 178
    - creating tables for 194
    - double spacing output 82
    - formatting data values 90
    - generating column totals 76
    - identifying observations 70
    - selecting observations 179
    - selecting variables 69
    - sorting data 74
    - specifying footnotes 82
    - specifying titles 82
  - LISTING destination 204
  - log messages 8
  - Log window
    - clearing 53
    - resubmitting revised programs 54
  - logic errors
    - PUTLOG statement 55
  - logical operators
    - conditional processing 235
    - in SAS expressions 113
  - LOW keyword 168
  - LOWCASE function 351, 354
  - lt (<) operator 235
- M**
- Markup Languages Family destination 204
  - match-merging data sets 295
    - compilation phase 296
    - examples 292
    - execution phase 297
    - functionality 278, 291
    - handling missing values 298
    - handling unmatched observations 298
    - selecting data 292
  - MAX statistic
    - MEANS procedure 178, 185
  - MAXDEC= option, MEANS procedure 180
  - MDY function
    - examples 331
    - functionality 325
    - missing values 332
  - MEAN statistic
    - MEANS procedure 178, 185
  - MEANS procedure
    - BY statement 183
    - CLASS statement 182
    - creating summarized data sets 184
    - descriptive statistics 178
    - detecting invalid data 155, 156
    - functionality 176
    - hypothesis testing 178
    - keywords supported 177
    - limiting decimal places 180
    - MAXDEC= option 180
    - OUTPUT statement 184

- quantile statistics 178
  - selecting statistics 177
  - specifying variables 181
  - syntax 156, 176
  - VAR statement 156, 181
  - MEDIAN statistic, MEANS procedure 178
  - MERGE statement
    - match-merging data sets 278, 291
    - RENAME= data set option 301
    - RETAIN statement and 233
    - syntax 291
  - merging data sets 289
  - Microsoft Excel data 130
    - CONTENTS procedure 122, 127
    - creating worksheets 130
    - DATA statement 122, 125
    - LIBNAME statement 121
    - name literals 125
    - named ranges 126
    - overview 121
    - PRINT procedure 122, 125, 126
    - PROC IMPORT 121
    - referencing workbooks 123
    - RUN statement 122, 125
    - SAS/ACCESS LIBNAME statement 121, 122, 129
    - SET statement 122
    - steps for reading 122
    - WHERE statement, DATA step 125
    - writing the DATA step 125
  - MIN statistic
    - MEANS procedure 178, 185
  - missing values
    - at beginning/middle of record 428
    - at end of record 427
    - in match-merge processing 298
    - MDY function and 332
    - overview 17
  - MISSOVER option, INFILE statement 427, 496
  - MMDDYY10. format 93
  - MMDDYY8. format 93
  - MMDDYYw. format 91
  - MMDDYYw. informat
    - examples 406, 447
    - functionality 448
    - syntax 448
  - MODE statistic
    - MEANS procedure 178
  - modified list input 418
    - ampersand modifier 431
    - colon modifier 431, 433
    - formatted input comparison 435
    - mixing styles 439
    - processing 418
  - MONTH function
    - examples 327
    - functionality 314
    - manipulating date values 326
    - syntax 326
    - typical use 325
  - multiple observations from single record
    - overview 479
    - reading repeating blocks of data 480
    - reading same number of repeating fields 487
    - reading varying number of repeating fields 495
  - multiple records, single observation from
    - line pointer controls 462, 473
    - overview 461
    - reading records non-sequentially 469
    - reading records sequentially 462
- N**
- N statistic
    - MEANS procedure 178, 185
  - n-way frequency tables 187, 192
  - naming conventions
    - for variables 18, 107
    - SAS data sets 14
  - ne (^=) operator 235
  - NENGOW. informat 406
  - nesting
    - DO groups 249
    - DO loops 373
  - NMISS statistic
    - MEANS procedure 178
  - NOCOL option, TABLES statement (FREQ) 197
  - NOCUM option, TABLES statement (FREQ) 191
  - NOFREQ option, TABLES statement (FREQ) 197
  - NOOBS option, PRINT procedure 70
  - NOPERCENT option, TABLES statement (FREQ) 197
  - NOROW option, TABLES statement (FREQ) 197
  - NOT operator 235, 236
  - numeric variables 402
    - array processing and 386
    - identifying nonstandard data 402
    - reading nonstandard data 408
    - reading range of 420
    - reading standard data 407
  - numeric-to-character conversion 316, 321

**O**

- OBS= option, INFILE statement 108, 109
- OBS= system option 44
- observations 16
  - See also* combining data sets
  - combining from multiple data sets 278
  - creating for DO loop iterations 371
  - creating from multiple records 462
  - creating from single record 480
  - creating per detail record 508
  - creating per header record 515
  - deleting 240
  - detecting end of data sets 264
  - finding in subgroups 261
  - identifying 70
  - limiting when testing programs 158
  - selecting in list reports 71
  - selecting matching 303
  - specifying via system options 44
  - unmatched 298, 302
  - writing explicitly 263
- ODS \_ALL\_ CLOSE statement 205
- ODS (Output Delivery System)
  - advantages 204
  - HTML support 206, 208
  - opening and closing destinations 204
- ODS destinations 204
- ODS EXCEL destination
  - TAGATTR= style 223
- ODS EXCEL Statement
  - Syntax 222
- ODS HTML CLOSE statement
  - syntax 205
- ODS HTML statement
  - Table of Contents syntax 208
- ODS HTML Statement
  - syntax 206
- ODS LISTING CLOSE statement 205
- ODS PDF Destinations
  - Open and Close Statements 216
  - Table of Contents 216
- ODS PDF Statement
  - Statements 216
  - syntax 215
- ODS RTF
  - RTF Formats 221
  - RTF Graphics 221
- ODS RTF Destinations
  - Open and Close Statements 221
- ODS RTF Statement
  - syntax 220
- ODS statements 204
- one-to-one reading of data sets
  - example 283
  - functionality 278, 280, 281
  - selecting data 281
- one-way frequency tables 187
- operands 112
- operators
  - comparison 235
  - concatenation 321, 322
  - defined 112
  - in SAS expressions 112
  - logical 113, 235
- OPTIONS statement 41
- Options window
  - Results tab 38, 40
- OR operator
  - examples 236
  - in logical operations 235
  - in SAS expressions 113
  - in WHERE statement, PRINT procedure 73
- OTHER keyword 168
- OTHERWISE statement 245
- output
  - See also* HTML output
  - double spacing 82
  - manipulating date and times 42
  - setting system options 41
- Output Delivery System (ODS)
  - EXCEL 222, 223
  - PDF 215, 216, 219
  - RTF 220, 221
- Output destination 204
- OUTPUT statement
  - creating for DO loop iterations 371
  - functionality 263
  - single observations per header records 519
  - syntax 263
- OUTPUT statement (MEANS) 185
- OUTPUT statement, MEANS procedure
  - functionality 184
  - syntax 184

**P**

- P1 statistic, MEANS procedure 178
- P10 statistic, MEANS procedure 178
- P25 statistic, MEANS procedure 178
- P5 statistic, MEANS procedure 178
- P50 statistic, MEANS procedure 178
- P75 statistic, MEANS procedure 178
- P90 statistic, MEANS procedure 178
- P95 statistic, MEANS procedure 178
- P99 statistic, MEANS procedure 178
- PAD option, INFILE statement 412
- parentheses ()
  - for function arguments 315
  - logical comparisons in 236
- PATH= Option

- syntax 212
  - PDV
    - See [program data vector](#)
  - PDw.d informat 406
  - PERCENTw. informat 406
  - PERCENTw.d informat 406
  - period (.)
    - in SAS filenames 13
  - pointer controls
    - / (forward slash) 463
    - @n 403
    - #n 469
    - +n 405
    - combining 473
    - functionality 404, 462
    - reading records non-sequentially 469
    - reading records sequentially 462
  - Preferences window
    - depicted 36, 39, 40
    - opening 36
    - Preferred Web Browser option 38
    - Results tab 36
  - preferred web browser 38
  - PRINT option, SUMMARY procedure 186
  - PRINT procedure
    - BY statement 77, 79
    - creating data sets from raw data files 101
    - creating list reports 68
    - DOUBLE option 82
    - ID statement 71, 79
    - LABEL option 88, 244
    - listing data sets 109
    - NOOBS option 70
    - reading Excel data 122, 125, 126
    - SUM statement 76, 77
    - VAR statement 69, 71
    - WHERE statement 71
  - Printer Family destination 204
  - PROBT statistic, MEANS procedure 178
  - PROC IMPORT
    - reading Excel data 121
  - PROC step
    - characteristics 7
    - missing RUN statement 57
    - OPTIONS statement and 41
  - program data vector 141
    - DATA step processing 141, 148, 149
    - match-merge processing 295, 296, 297, 298
    - reading data sets 266, 268, 272
  - programming workspace
    - SAS libraries 11
  - PROPCASE function 355
  - PUT function
    - numeric-to-character conversion 316, 321
    - syntax 322
  - PUT statement
    - automatic variables 160
    - character strings 159
    - conditional processing and 161
    - data set variables 159
    - functionality 118, 436
    - syntax 119, 158, 436
    - testing programs 158, 159, 238
  - PUTLOG statement 55
- Q**
- Q1 statistic, MEANS procedure 178
  - Q3 statistic, MEANS procedure 178
  - QRANGE statistic, MEANS procedure 178
  - QTR function
    - functionality 314
    - manipulating date values 326
    - syntax 326
    - typical use 325
  - quantile statistics 178
  - quotation marks
    - common errors 58
    - delimiters within strings 426
    - format names and 168
    - logical operations 236
    - numeric-to-character conversion 322
    - reading Excel data 124
- R**
- RANGE statistic
    - MEANS procedure 178
  - raw data files 100
    - See also [hierarchical files](#)
    - creating 118
    - describing the data 106, 119
    - formatted input 403
    - free-format data 417, 436
    - invalid data 109, 110
    - mixing input styles 439
    - modifying list input 431
    - nonstandard numeric data 402
    - processing list input 418
    - reading entire files 109
    - reading missing values 427
    - record formats 410
    - sample record layout 100
    - specifying 104, 118
    - specifying character value length 421
  - records
    - fixed-length 410

- multiple observations from single record 480
  - single observation from multiple records 462
  - single observation per detail record 508
  - single observation per header record 515
  - variable-length 410
  - RENAME= data set option 301
  - renaming variables 300
  - repeating blocks of data, reading 480
  - repeating fields
    - reading same number of 487
    - reading varying number of 495
  - Results Viewer window 37
  - RETAIN statement
    - DATA step processing 270
    - initializing sum variables 233
    - single observations per detail records 509
    - syntax 233
  - RIGHT function 347
  - ROUND function 361
  - rows
    - See observations
  - RTF destination 204
  - RUN statement
    - creating data sets from raw data files 101
    - DATA step processing 148
    - describing data in programs 106
    - listing data sets 109
    - reading Excel data 122, 125
- S**
- SAS engines 30
    - interface library engines 30
  - SAS expressions 112
    - accumulating totals 232
    - arithmetic operators in 112
    - logical operators in 113
    - SELECT statements 247
    - specifying compound 73
    - specifying in list reports 72
  - SAS files 13
    - naming conventions 14
    - referencing 13
    - referencing in other formats 30
    - storing 12
    - temporary 14
    - two-level names 13, 28, 30
  - SAS formats
    - See formats
  - SAS informats
    - See informats
  - SAS libraries 11
    - creating 11
    - DATASETS procedure 33
    - defining 11, 28
    - deleting 12
    - storing SAS files 12
    - viewing 31
    - viewing library contents 31
  - SAS log 321
  - SAS programs
    - DATA step processing 139
    - error handling 51
    - log messages 8
    - processing 8
    - resubmitting revised 53
    - results of processing 9
  - SAS sessions
    - libref lifespan and 29
    - OPTIONS statement and 42
  - SAS statements
    - See also assignment statements
    - conditionally executing 509
    - DO groups 248
    - executing repeatedly 368
    - executing when true 496
    - SELECT groups 245
  - SAS System Options window
    - depicted 47
    - finding options quickly 47
    - functionality 47
    - SAS Options Environment pane 47
  - SAS/ACCESS engines 30
  - SAS/ACCESS LIBNAME statement
    - reading Excel data 121, 122
    - syntax 123
  - Sashelp library 11
  - Sasuser library 11
  - SCAN function
    - functionality 340
    - specifying delimiters 341
    - specifying variable length 342
    - SUBSTR function versus 346
    - syntax 340
  - SCANOVER option, INFILE statement 496
  - SELECT groups 245
  - SELECT statement 245
  - semantic errors 51
  - semicolon (;)
    - common errors 57
  - SET statement
    - BY statement and 181
    - concatenating data sets 278, 284
    - END= option 264
    - interleaving data sets 278, 289
    - one-to-one reading 278, 280

- reading data sets 255, 266
  - reading Excel data 122, 125
  - RETAIN statement and 233
  - syntax 255
  - single observation from multiple records
    - line pointer controls 462, 473
    - overview 461
    - reading records non-sequentially 469
    - reading records sequentially 462
  - single observation per detail record
    - conditional processing 509
    - DATA step processing 511
    - displaying results 514
    - dropping variables 511
    - overview 508
    - reading detail records 510
    - retaining variable values 509
  - single observation per header record
    - DATA step processing 520
    - determining end of external file 518
    - DO group actions 516
    - overview 515
    - reading detail records 517
  - single record, multiple observations from
    - overview 479
    - reading repeating blocks of data 480
    - reading same number of repeating fields 487
    - reading varying number of repeating fields 495
  - SKEWNESS statistic, MEANS procedure 178
  - SORT procedure
    - BY statement 75, 294
    - examples 75
    - sorting data in list reports 74
    - syntax 74
  - sorting data in list reports 74
  - statistics
    - quantile 178
    - summary 185
  - STD statistic
    - MEANS procedure 178, 185
  - STDDEV statistic, MEANS procedure 178
  - STDERR statistic
    - MEANS procedure 178
  - STEP statement 125
  - STOPOVER option, INFILE statement 496
  - storing
    - formats 166
    - SAS files 12, 103
  - strings
    - See [character strings](#)
  - STYLE= option
    - syntax 214, 219
  - subgroups, finding observations in 261
  - subsetting data 240
  - subsetting IF statement
    - examples 116, 264
    - finding year 328
    - functionality 115, 258
    - selecting matching observations 303
    - syntax 115
  - SUBSTR function
    - functionality 321, 342
    - positioning 345
    - replacing text 344
    - SCAN function versus 346
    - syntax 343
  - subtotaling variables 77, 189
  - sum statement
    - accumulating totals 232
    - DO loops and 369
    - reading data sets 269, 270
    - syntax 232
  - SUM statement, PRINT procedure
    - creating customized layouts 79
    - generating column totals 76
    - requesting subtotals 77
    - syntax 76
  - SUM statistic
    - MEANS procedure 178
  - sum variables, initializing 233
  - SUMMARY procedure
    - creating summarized data sets 186
    - PRINT option 186
  - summary statistics 185
  - SUMWGT statistic
    - MEANS procedure 178
  - syntax errors 51
  - system options
    - changing 47
    - finding quickly 47
    - modifying via OPTIONS statement 41
    - setting 41
    - specifying observations 44
- T**
- T statistic
    - MEANS procedure 178
  - TABLES statement, FREQ procedure 155
    - creating n-way tables 192
    - creating two-way tables 191
    - CROSSLIST option 195
    - examples 189
    - LIST option 194
    - NOCOL option 197
    - NOCUM option 191
    - NOFREQ option 197



- NOPERCENT option 197
  - NOROW option 197
  - syntax 189, 191
  - target variables
    - defined 316
    - missing values and 332
  - temporary array elements 396
  - temporary variables 181, 261, 302
  - testing programs
    - automatic variables 160
    - character strings 159
    - conditional processing 161, 238
    - data set variables 159
    - hypothesis testing 178
    - limiting observations 158
    - PUT statement 158
  - TIME function 325
  - TIMEw. format 447
  - TIMEw. informat 406, 449
  - TITLE statement
    - canceling 85
    - examples 83
    - modifying 85
    - quotation marks in 59
    - specifying in list reports 82
  - TITLES command 83
  - TITLES window 83
  - TO clause, DO statement 369
  - TODAY function 325
  - trailing at-sign (@) 481, 488, 509
  - trailing blanks, removing 347, 348, 349
  - TRANWRD function 356
  - TRIM function 348
  - TRUNCOVER option, INFILE statement 496
  - two-way frequency tables 191
- U**
- UCLM statistic, MEANS procedure 178
  - underscore ( \_ ) 18
  - UNIX environment
    - SAS library implementation 12, 29
    - storing files 12
    - unbalanced quotation marks 59, 60
  - unmatched observations
    - excluding 302
    - handling 298
  - UPCASE function 351, 353
  - UPDATE statement 233
  - USS statistic
    - MEANS procedure 178
- V**
- validating data 155
  - VALUE statement, FORMAT procedure
    - assigning formats to variables 170
    - functionality 167
    - HIGH keyword 168
    - LOW keyword 168
    - OTHER keyword 168
    - specifying value ranges 168
    - syntax 167
  - VAR statement
    - MEANS procedure 156, 178, 181, 185
    - PRINT procedure 69, 71
  - VAR statistic
    - MEANS procedure 178
  - variable attributes 17
    - data sets 17, 142
    - format considerations 20
  - variable lists
    - as array elements 385
    - function arguments and 316
  - variable-length records 410
  - variables 17
    - See also* arrays
    - See also* character variables
    - See also* numeric variables
    - See also* variable attributes
  - accumulating totals 232
  - assigning formats 170, 243, 457
  - assigning labels 21, 197, 243
  - assigning values conditionally 234, 245
  - attributes 17, 20
  - counter 497
  - creating or modifying 111
  - creating/modifying 232
  - default names 392
  - DO groups 248
  - dropping 511
  - format overview 20
  - functionality 17
  - generating totals 76
  - index 371, 372, 374, 388
  - informat overview 21
  - initializing 144, 233
  - labels for 21
  - length of 20, 342
  - missing values 17
  - naming conventions 18, 107
  - reading ranges 420
  - renaming 300
  - requesting subtotals 77, 189
  - retaining values 509
  - SELECT groups 245
  - selecting in list reports 69
  - selecting to drop and keep 241
  - specifying in FREQ procedure 189
  - specifying in MEANS procedure 181
  - specifying lengths 238



- specifying names in programs 107
- subsetting data 240
- sum 233
- target 316, 332
- temporary 181, 261, 302
- testing programs 159
- types of 19
- VARNUM option
  - CONTENTS procedure 35
  - CONTENTS statement, DATASETS procedure 35

## W

- w. format 91
- w.d format 91
- w.d informat 318, 406, 407
- web browsers
  - See [browsers](#)
- WEEKDATEw. format 456
- WEEKDAY function 325, 329
- WHEN statement 245
- WHERE statement, DATA step
  - automatic conversions and 318
  - reading Excel data 125
- WHERE statement, PRINT procedure
  - CONTAINS operator 73
  - examples 73
  - specifying compound expressions 73

- specifying expressions 72
- syntax 71
- Windows environment
  - SAS library implementation 12, 29
  - storing files 12
  - unbalanced quotation marks 59
- WORDDATEw. format 457
- Work library 11
- writing observations explicitly 263

## Y

- YEAR function
  - examples 327
  - functionality 314
  - manipulating date values 326
  - syntax 326
  - typical use 325
- YEARCUTOFF= system option
  - functionality 451
  - handling four-digit years 44
  - handling two-digit years 42, 452
- YRDIF function 325, 338

## Z

- z/OS environment
  - SAS library implementation 12, 29
  - unbalanced quotation marks 59, 60





# Gain Greater Insight into Your SAS<sup>®</sup> Software with SAS Books.

Discover all that you need on your journey to knowledge and empowerment.

 [support.sas.com/bookstore](http://support.sas.com/bookstore)  
for additional books and resources.

  
THE POWER TO KNOW.

SAS and all other SAS Institute Inc. product or service names are registered trademarks or trademarks of SAS Institute Inc. in the USA and other countries. ® indicates USA registration. Other brand and product names are trademarks of their respective companies. © 2013 SAS Institute Inc. All rights reserved. S107969US.0613

