



UNIVERSITY
OF LONDON
INTERNATIONAL
PROGRAMMES

Undergraduate courses in

Economics, Management, Finance and the Social Sciences 2017–2018

The World Class: studied
anywhere, valued everywhere.

londoninternational.ac.uk/lse

Academic direction by:



THE LONDON SCHOOL
OF ECONOMICS AND
POLITICAL SCIENCE ■

Join the World Class

1 **A mark of excellence**

Gain a degree from the University of London, a mark of excellence, respected worldwide since 1858.

2 **Study without relocating**

Study wherever you live and gain a prestigious qualification. With no travel, relocation or accommodation costs, studying through the University of London International Programmes is much more affordable than coming to London to study on campus.

3 **Quality of learning**

The programmes in this prospectus are developed by academics at LSE, a member institution of the University of London and one of the world's leading social science universities.

4 **Employability**

Develop employment skills such as problem solving, analysis and self-motivation which are sought after by top employers worldwide.

5 **Join the World Class**

On graduation join our global community of influential alumni, from leaders in business and industry to Nobel prize winners.



“In the increasingly competitive environment of worldwide access to higher education, the University of London International Programmes continue to offer a guarantee of quality, value and intellectual rigour.”

Professor Sir Adrian Smith FRS
Vice-Chancellor, University of London

Your prestigious University of London qualification



About your qualification

When you graduate with a degree, diploma or certificate from the University of London you will receive two important documents – your Final Diploma (the parchment you receive on graduation) and a Diploma Supplement.

The Final Diploma

- Indicates that you were registered with the University of London and awarded a University of London degree, diploma or certificate.
- Gives the name of the London School of Economics and Political Science as the member institution that developed the syllabus and provided assessment.
- Features the University of London crest and the Vice-Chancellor's signature.

The Diploma Supplement

- Describes the nature, level and content of programme you successfully completed.
- Includes the transcript of courses taken, marks achieved and overall classification.
- States the role of the London School of Economics and Political Science and the method of study.

Contents

Key dates

Application deadline for BSc and Graduate Diploma programmes:

1 October in the year before you intend to sit your examinations

Registration deadline for BSc and Graduate Diploma programmes:

30 November

Application deadline for the Certificate of Higher Education in Social Sciences:

You must apply directly to an institution with Certificate teaching status. Please contact them for their application deadline: londoninternational.ac.uk/teaching-institutions/teaching-institutions

Registration deadline for the Certificate of Higher Education in Social Sciences:

31 October

Study materials

Available soon after completing registration and payment

Examinations

May and June

Introduction

Join the World Class	2
Your prestigious University of London qualification	4
World-class academic direction from LSE	6
Introduction to the awards	8
How you study	9
Further your study at LSE	10
Online resources	11
Fast track to professional accreditation	12
The route around our programmes	14

Programmes

BSc degrees	15
Accounting, Banking and Finance programmes	16
BSc Accounting and Finance	17
BSc Banking and Finance	19
Business and Management programmes	20
BSc Business and Management	21
BSc Management and Digital Innovation	22
Development programmes	24
BSc Development and Economics	25
BSc International Development	26
Economics programmes	28
BSc Economics	29
BSc Economics and Finance	30
BSc Economics and Management	31
BSc Economics and Politics	32
BSc Mathematics and Economics	33
Social science programmes	34
BSc International Relations	35
BSc Politics and International Relations	36
Joint Laws programmes	38
Graduate Diplomas	39
Graduate Diploma structures	42
Certificate of Higher Education in Social Sciences (CHESS)	44

Reference

Additional educational support	46
Selection groups	50
Application and registration process	54
Fees	55
Further information	56

World-class academic direction from LSE

The University of London International Programmes was established in 1858 to give students around the world the opportunity to study with one of the most prestigious universities in the UK. This makes the University of London the world's oldest provider of degrees by distance and flexible learning.

About LSE

LSE is one of the member institutions of the University of London and a world-leading social science institution. The School's academic profile spans the broad range of social sciences – disciplines that reflect how we interact with one another and with society.

LSE academics come from all over the world and from many social, educational and ethnic backgrounds. They are in constant demand as commentators and analysts in the media, act as advisors to governments, and are seconded to national and international organisations.

LSE research benefits society and informs policymakers across the UK and the world. Current areas of research and expertise include globalisation, human rights, risk and business management, new communications technologies, urban and regional policies and new forms of governance.

Our programmes

Studying on one of our Economics, Management, Finance and the Social Sciences (EMFSS) programmes will encourage you to think critically and creatively and increase your understanding of how and why modern societies, institutions and economic systems function in the way they do.

It can provide opportunity for further study at undergraduate and master's level, and will also provide you with an excellent foundation for a wide variety of careers ranging from accounting, banking and information systems to the media, civil service and journalism.

Is this the right programme for me?

Ask yourself these questions:

1. Do I want the challenge of developing more than one way of thinking about the social world?
2. Do I want to work cooperatively with others to share my ideas and learn how to develop this important skill for the world of work?
3. Do I want to link ideas from all the disciplines I study to create new ways of thinking about issues in the real world?
4. Do I want to develop a questioning outlook and be critical of my own work?

If you answer yes to all of the above, then you could benefit from studying one of these programmes.

Whatever stage you have reached in your education you can use the table on page 8 to see which study path and qualification is the right one for you.





Fast facts

LSE was founded in

1895

It has now grown to become one of the foremost social science universities in the world

36 18

World Leaders Nobel Prize winners
(past and present) have taught or studied at the LSE

50+

LSE academics are responsible for the academic direction, content and assessment of the EMFSS degrees and diplomas offered via the University of London International Programmes

25

Graduates of the University of London International Programmes are currently undertaking postgraduate study at LSE in London

University of London International Programmes – a global reach with:

50,000+

students spanning

180

countries worldwide



“The course material of these University of London qualifications are carefully devised, and monitored, by senior academics at the LSE to ensure academic quality and rigour. Each course focuses on the essential core skills and techniques required for a serious understanding of the subject which, in turn, can support further graduate study or professional work.”

Professor Richard Jackman
Academic Director, University of London International Programmes at LSE



“The Master’s degree at LSE is very demanding and if I did not take the University of London International

Programme as my choice back then, I would definitely be struggling right now.”

Darrell Lua
BSc Accounting and Finance, Singapore
LSE MSc Finance and Private Equity, United Kingdom



Introduction to the awards

Award/Level	Why consider this?	Courses	Cost ^α	Duration
-------------	--------------------	---------	-------------------	----------

If you do not currently meet the entrance requirements for our degrees

Certificate of Higher Education in Social Sciences (FHEQ Level 4)	<p>If you can attend one of the teaching institutions with permission to teach the programme and you wish to:</p> <ul style="list-style-type: none"> • get on to the degree programme and may not meet the entrance requirements for the degree. • gain a stand-alone qualification that will admit you into the second year of the BSc programmes listed in this prospectus and degrees at many universities in the UK, USA and Australia. 	4	£1,930 [▲] (if completed in one year)	1–5 years
--	---	---	---	-----------

If you meet the entrance requirements for our degrees

BSc Standard Route (FHEQ Level 6)	<ul style="list-style-type: none"> • To gain a world-class degree through flexible study. • If you have previously studied similar material to a comparable level and depth you can apply for accreditation of prior learning (APL) from up to four full 100 courses. 	12	£5,238 (if completed in three years)	3–8 years
--	---	----	---	-----------

If you already have a first degree (Bachelor's degree)

BSc Graduate Entry Route (FHEQ Level 6)	If you hold a full first degree and want a flexible way to gain a second degree, you may be able to complete a shorter than usual study programme (a minimum of two years for most degrees).	9	£3,855 (if completed in two years)	2–8 years [†]
Graduate Diplomas (FHEQ Level 6)	If you hold a full first degree in any discipline but, for professional or personal reasons, wish to secure a stand-alone qualification in a named discipline in the fields of Economics, Management, Finance and the Social Sciences. You may also use the diploma as a basis for progression into postgraduate study in a related area.	4	£2,018 (if completed in one year)	1–5 years

Entrance requirements for:

Certificate of Higher Education in Social Sciences see page 45

BSc degrees (Standard and Graduate Entry Route) see page 15

Graduate Diplomas see page 40

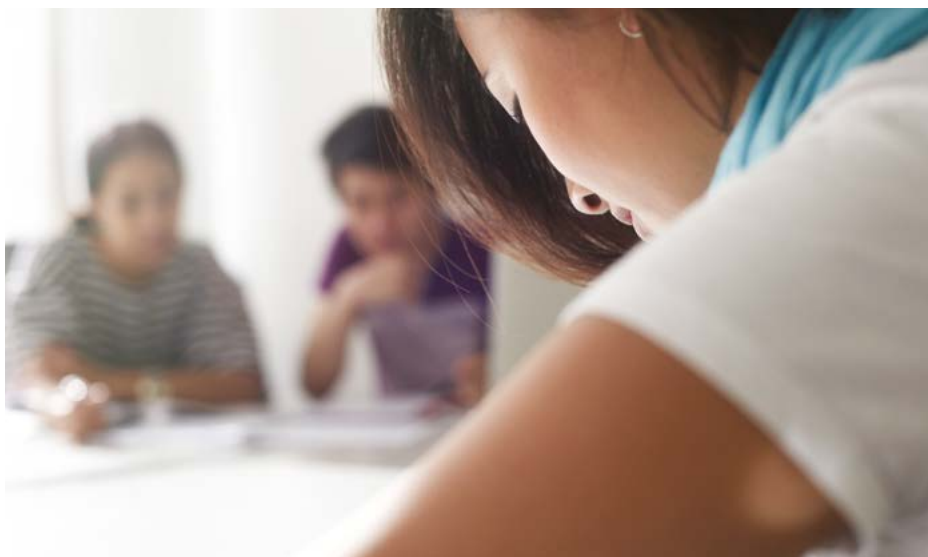
There are many other qualifications, from the UK and overseas, that the University accepts as satisfying the entrance requirements.

^α Cost refers to the combined fees payable over the minimum study period relevant to each award taking into account annual increases. Fees are subject to annual revision and typically may increase by up to 7% each year. The full list of annual fees for the programmes will be published on the Student Fees web page once confirmed, please visit: londoninternational.ac.uk/fees

[▲] Certificate of Higher Education in Social Sciences (CHESS) students will need to pay fees to a local institution. If you choose to attend an institution while studying for other awards you will need to pay their fees in addition to University of London fees. If you successfully complete the CHESS you can transfer to, and complete, a BSc degree in a further two years paying continuing registration fees. You will need to pay additional fees.

[†] The BSc Development and Economics, BSc Economics and Finance, BSc Economics and Politics, and BSc Management and Digital Innovation have a three-year minimum registration period.

How you study



Am I ready to study?

A University of London qualification is highly regarded worldwide. Given the academic rigour of our programmes, to achieve good results requires a high degree of self-motivation. But your hard work will be worth it in the end, as you will join an expanding community of alumni with excellent career prospects.

Am I eligible?

You can take advantage of the wide range of entry points, including a fast track route for those who already hold a degree. If you are not eligible for the degree, you may be eligible for the Certificate of Higher Education in Social Sciences (please see page 45).

Flexible study

You can manage your studies to fit in with your own schedule. As a guide, you should dedicate at least 35 hours per week for approximately 34 weeks of the year if you intend to complete the maximum of four courses in any one year.

Our programmes provide an opportunity to obtain a prestigious qualification at a reasonable cost. You can choose to

study independently or pay for face-to-face tuition at a local institution, where available. Please note that students taking the Certificate of Higher Education in Social Sciences must attend an institution with Certificate teaching status (please see the list on pages 46–49).

Study materials

Your study materials are available through the Student Portal and are specially written by academics appointed by LSE. The cost of your study materials is included in your initial and continuing registration fees.

Depending on the course, materials are likely to include a Student guide to the International Programmes and the Programme handbook; subject guides for each course studied; past examination papers and Examiners' commentaries; and, Programme regulations containing full details of syllabuses, programme structures and degree classification criteria.

Books

You will need to purchase your own books. We ensure all key books are widely available either from internet bookshops or by mail order. For more information see: londoninternational.ac.uk/booksonline

Study support

The University does not provide personal tuition to International Programmes students, although staff can help you with administrative queries. If you have any questions of an academic nature you will be able to contact the LSE office, but please remember (especially if you intend to study independently) that LSE staff cannot engage in active or regular contact or tuition. You can choose to pay for additional educational support at a local independent institution, please see pages 46–49.

Examinations

You are assessed by unseen written examinations. You do not have to enter for examinations every year: you decide when you are ready. Examinations are set and marked by our academics to ensure your work is assessed to the same standard as LSE-based students. They are held once a year, in May/June, at local centres in over 180 different countries as well as in London. For most courses you sit a three-hour paper (or a two-hour paper for each half course). For some courses a project/coursework also counts towards your assessment.

Library support

LSE library

Registered students may have access to the main LSE Library for reference only. See: lse.ac.uk/library

Senate House Library

Registered students are entitled to use Senate House Library. See: ull.ac.uk

Further your study at LSE

LSE Summer School

LSE runs a nine-week programme of Summer School sessions, each of which are three weeks in duration. The Summer School runs from late June to mid-August each year. This is a unique opportunity for students of the University of London International Programmes to experience the LSE in-person, and to engage directly with its world-class faculty.

More than 80 academically rigorous courses are available across a range of subjects and levels. They are all led by full-time LSE academics, and are suited to undergraduates, postgraduates and professionals.

EMFSS students and alumni also benefit from a 15% discount on tuition fees. If you successfully complete two Summer School courses, you may gain APL for one 100 course. Visit: lse.ac.uk/summerschool

Spend a year at LSE

Students who have completed at least four courses from the degree are able to apply for admission to the LSE General Course and claim credit for the successful completion of relevant courses. The General Course is an opportunity for International Programmes students to experience life at LSE, attending lectures and classes for the period of a full academic year of study (October–July). For more information visit: lse.ac.uk/study/UOLIP/transfer_change.aspx

Scholarships to study at master's level at LSE

Scholarships for MSc study are awarded annually to students who have successfully completed one of the EMFSS degrees as International Programmes students, and who have also been accepted for postgraduate study at LSE.

To qualify, students will normally have, or expect to have, a first class honours degree from the University of London International Programmes. These scholarships normally cover full fees and maintenance.

“I truly had a wonderful summer abroad at the LSE Summer School. I gained the desired global experience and learnt a subject which I would be happy to pursue my career in.”

Ishaan Ghai

BSc Business and Management Graduate,
Singapore Institute of Management, 2016



Online resources



Student Portal

You are required to confirm on your application form that you have (or will have) access to the internet so that you are able to make use of resources which are only available online. As soon as you have registered we will send you a University of London username and password which will allow you to log in to the Student Portal. Once logged in, you can also access your University of London email account. All of the online resources available to students can be accessed via the Portal.

The Virtual Learning Environment (VLE)

By supporting your studies and helping you feel part of a community, the VLE forms an important part of your study experience with us. It provides:

- **Electronic study materials:**
All of the printed materials which you receive from the University of London are available to download, to give you flexibility in how and where you study.
- **Student discussion forums:**
An open space for you to discuss interests and seek support from your peers, working collaboratively to solve problems and discuss subject

material. Forums on many of the larger courses are supported by an LSE course moderator, who can contribute to discussions and provide feedback.

- **Videos:** Recorded academic introductions to many subjects; interviews and debates with academics who have designed the courses and teach similar ones at LSE.
- **Audiovisual tutorials and solutions:**
For some of the first year and larger later courses, such as Introduction to Economics, Statistics, Mathematics and Principles of Banking and Finance, audiovisual tutorials are available to help you work through key concepts and to show the standard expected in examinations.
- **Self-testing activities:** Allowing you to test your own understanding of subject material.
- **Study skills:** Expert advice on getting started with your studies, preparing for examinations and developing your digital literacy skills.
- Students registered for Laws courses also receive access to the dedicated Laws VLE.

The Online Library

The Online Library holds thousands of journal articles which you will be able to access free of charge. Many of the courses on the EMFSS programmes make use of journal articles in the essential reading lists. The Online Library with its state-of-the-art search engine, Summon, is accessed via the Student Portal.

For many students, using an Online Library and reading journal articles are new skills. We provide support and guidance on the best way to approach journal resources and a range of materials are available designed to improve your reading and information skills. A dedicated helpdesk is also available if you have any difficulties in finding what you need.



“The learning technology team, based here at the LSE in London, is responsible for the online course content delivered through the VLE. We create new and engaging resources, in collaboration with LSE academic authors, and ensure that existing content remains up-to-date and relevant.”

Dr Steve Bond
Learning Technology
Manager, LSE

Fast track to professional accreditation

Thinking ahead

Graduates of the BSc Accounting and Finance, BSc Accounting with Law, and BSc Banking and Finance degrees who wish to continue to professional accreditation may be able to get exemptions for certain modules from five professional bodies. This means you can gain your professional accreditation more quickly.

BSc Accounting and Finance graduates



- Eligible to claim credit for up to six Professional Stage modules

Students study for the full ACA qualification while in full-time employment. BSc Accounting and Finance graduates can claim credit for up to six Professional Stage modules required for qualification, depending upon the options chosen and grades achieved. Details can be found on their website: icaew.com/careers



- Eligible to receive up to five exemptions from CIMA's Certificate in Business Accounting and CIMA's Operational Levels for P1 and F1

Graduates who have passed the required specified EMFSS courses are eligible to receive exemptions for CIMA's Certificate in Business Accounting (exemptions being granted for C01–C05) and also CIMA's Operational Levels for P1 (Performance Operations) and F1 (Financial Operations) that count towards CIMA's Diploma in Management Accounting: cimaglobal.com

BSc Accounting and Finance graduates

BSc Accounting with Law graduates



ACCREDITED PROGRAM

- Eligible to receive up to eight exemptions from the CPA Australia Programme

BSc Accounting and Finance and BSc Accounting with Law graduates are eligible to receive up to eight exemptions from the CPA programme. Graduates achieving exemptions could progress directly to the Professional Level of the programme. Please check the accredited courses page on the CPA Australia website for more details. Further information: cpaaustralia.com.au

BSc Accounting and Finance graduates

BSc Accounting with Law graduates

BSc Banking and Finance graduates



- Eligible for exemption from certain ACCA modules leading to professional qualification

Graduates from the above programmes who have passed combinations of courses on these degrees are eligible for exemption from certain ACCA modules leading to professional qualification. Further information: accaglobal.com

BSc Accounting and Finance graduates

BSc Accounting with Law graduates

BSc Banking and Finance graduates



singapore QP

- Eligible to qualify for the Singapore Qualification Programme

Graduates of the above programmes who pass certain courses as specified by the Singapore Qualification Programme, with a mark of 60% or more, are eligible to apply for exemptions from a number of the Core Syllabus Areas of the Singapore QP Academic Base. More details about the Singapore Qualification Programme are available at: singaporeqp.com



The route around our programmes



The FHEQ framework

The UK's Quality Assurance Agency for Higher Education (QAA) established the FHEQ as a framework for all further and higher education qualifications.

Providing an important reference point, the FHEQ is based primarily on the concepts of levels and comparability. It helps providers of higher education to: maintain academic standards; inform international comparability of academic standards; ensure international competitiveness; and facilitate student/graduate mobility.

Within the context of higher education awards, the FHEQ levels are: Level 4, Level 5 and Level 6. Levels 1–3 refer to pre-University education, while Level 7 is Masters-level. For ease of reference, we have adopted the following terminology:

- 100 courses (equivalent to FHEQ Level 4)
- 200 courses (equivalent to FHEQ Level 5)
- 300 courses (equivalent to FHEQ Level 6)

By assigning each course to the appropriate FHEQ level and presenting programme structures in terms of levels, comparisons can now be drawn more easily across the suite of BSc awards.

Course codes

The six-character course code is made up of three separate elements: the subject area, the course level and the unique course designator, respectively.

Example

AC1025 Principles of accounting

- AC denotes the subject area (Accounting).
- 1 indicates that this is a 100 course (2 indicates a 200 course, 3 a 300 course).
- 025 is the unique course designator.

Rules of progression for BSc degrees

Courses are taken at three levels, representing the nominal three-year period of study. In your first year of study you must demonstrate the capacity to succeed at Level 4 (100) courses before advancing to Level 5 (200) or Level 6 (300) courses, unless you have received APL.

In terms of your progression through the Standard Route degree programmes, the following rules apply:

- you can take up to four full new courses in a year

- in your final year of study, you may take five new courses in order to complete your 12 courses, provided you are not carrying a failed course
- you may take a maximum of five courses at any examination period, in any combination of new courses and resits
- you may take an individual course in your final year, provided you do not take more than four other courses
- in your first year of study, you may only take 100 courses, unless you have received APL and are therefore permitted to take 200 or 300 courses
- to be eligible for the award of a degree, you must attempt all 12 courses of the study programme and pass a minimum of 11
- for the Graduate Entry Route degree programmes, you must successfully pass all nine courses to be eligible for the award of degree.

Programme structures

All of the programme structures given in this prospectus are subject to confirmation in the 2017–2018 Programme regulations. The regulations also contain full details on the rules that govern the choice of any course.

BSc degrees

Who are they for?

The BSc degree programmes provide an excellent foundation for a wide variety of careers ranging from accounting, banking and information systems to the media, civil service and journalism. All of the programmes can act as a stepping stone to further study at undergraduate and master's level.

You can gain a world-class degree through flexible study, while being encouraged to think critically and creatively. The programmes will also enable you to increase your understanding of how and why modern societies, institutions and economic systems function in the way they do.

Degree structures

BSc degrees consist of 12 courses when taken through the Standard Route and nine courses through the Graduate Entry Route. Courses are classified as either 100, 200 or 300.

Choosing your courses

For most degrees you have a certain amount of choice in the courses that you take. In the structures you will see that you can choose from a variety of Selection groups. You have control, within certain guidelines, over the number and choice of examinations you take each year.

Accreditation of prior learning (APL), Standard Route only

You may apply for APL from up to four full 100 courses. APL is awarded on an automatic or discretionary basis. You are advised to apply as early as possible if you want to claim APL from a course.

Classification

Degrees are awarded with the following classifications: First Class Honours, Second Class Honours (divided into Upper Division and Lower Division), Third Class Honours.

Entrance Requirements

BSc degree (Standard Route)

You must:

- normally* be aged 17 or above by the 30 November in the year of registration **and**
- meet our General Entrance Requirements **and**
- demonstrate competence in Mathematics at least equivalent to UK GCSE/GCE O level at Grade C or above** **and**
- meet our English language requirement. We may require a test of proficiency in English.

BSc degree (Graduate Entry Route)

You must:

- hold an undergraduate degree from an awarding institution acceptable to the University of London **and**
- demonstrate competence in Mathematics at least equivalent to UK GCSE/GCE O level at Grade C or above **and**
- meet our English language requirement. We may require a test of proficiency in English.

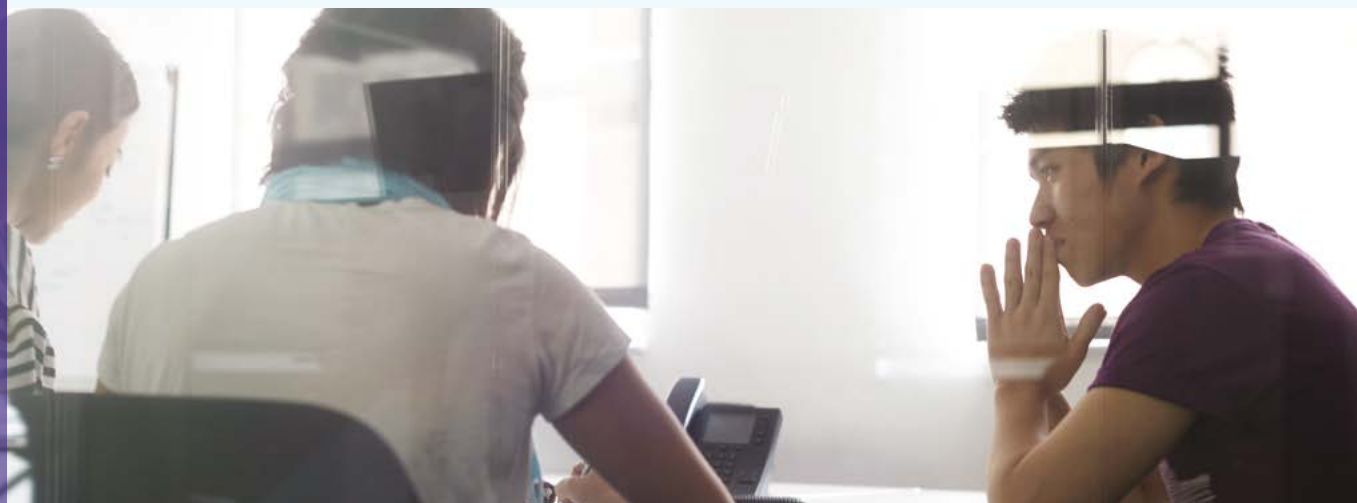
*Applications will be considered from applicants who do not meet the normal minimum age requirement for admission. Each application will be considered on an individual basis, and the decision taken at the discretion of the University of London.

**Applicants applying to the BSc Mathematics and Economics degree must demonstrate competence in Mathematics at least equivalent to UK GCE A level at Grade E or above.

For full details on how to meet our entrance requirements, including further information on our General Entrance Requirements, UK GCSE/GCE O level equivalents, UK GCE A level equivalents and English language requirements you should visit: londoninternational.ac.uk/courses/search



Accounting, Banking and Finance programmes



These qualifications provide a strong foundation in quantitative, economic, accounting and finance subjects. You then progress to specialised courses in areas such as investment management, auditing and corporate finance.

On completion of three of our BSc degrees (BSc Accounting and Finance, BSc Accounting with Law, BSc Banking and Finance) you will become eligible to apply for a fast track route to five professional bodies. Please see page 12 for details.

Programmes offered in this area

Degrees

- BSc Accounting and Finance
- BSc Accounting with Law
- BSc Banking and Finance
- BSc Economics and Finance

Diplomas (see page 42)

- Graduate Diploma in Accounting
- Graduate Diploma in Banking
- Graduate Diploma in Finance

Where can it lead?

- Accounting professions
- Investment and commercial banking
- Consulting
- Commercial banking
- Investment analysis and management
- Trading
- Sales
- Risk management
- Financial management
- Further academic study

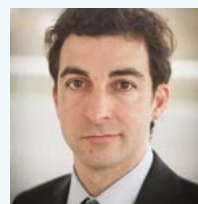
LSE Academic Coordinators



Dr Libon Fung

Dr Libon Fung is Lecturer in Accounting and Finance at Birkbeck, University of London, and Guest

Teacher in the Department of Accounting at LSE. He has published on topics including the analysis of 'rational speculative bubbles' and capital asset pricing theory.



Dr Vicente Cuñat

Dr Cuñat is Associate Professor in the Department of Finance at LSE. A former winner of the Young

Economist Award, he began his studies at the University of Valencia in Spain before undertaking doctoral research at LSE. Dr Cuñat's research interests include corporate finance, applied theory and econometrics and labour economics.

BSc Accounting and Finance

Programme overview

'This degree gives you an understanding of accounting and finance that will be useful throughout your career. This means that we do not simply teach accounting techniques and focus on computational skills with the aim of immediate application, but to enable you to evaluate their usefulness in different contexts. We encourage you to adopt a critical and flexible viewpoint and to look at the subject from a variety of perspectives, including the international dimension.'

Dr Libon Fung

Features of the degree

- A thorough grounding in accounting and finance within a strong social science framework.
- An international flavour, developed in consultation with academics and professionals throughout Southeast Asia as well as the UK.
- The degree has been developed by LSE academics within the Departments of Accounting and Finance, both of which enjoy preeminent reputations for the excellence of their teaching and research.
- BSc Accounting and Finance graduates can take advantage of 'fast track' agreements with certain professional bodies (please see page 12).



"Being from a prestigious international programme has given me an edge, especially in the accounting and finance industries, where talent comes from all over the world. And it's this global reach I've gained from the University of London that really adds value to my future endeavours."

Lai Ke Xin,
BSc Accounting and Finance, Malaysia

Originally from Perak, Malaysia, Ke Xin graduated from SIM GE with First Class honours in 2015. She now works at Crowe Horwath LLP in Singapore, which specialises in auditing, taxation and risk management.

Standard Route

100 courses

- 1 EC1002 Introduction to economics
- 2 ST104A Statistics 1 (half course) **and** MT105A Mathematics 1 (half course)
- 3 FN1024 Principles of banking and finance
- 4 AC1025 Principles of accounting
- 5 One course (or two half courses) from Selection groups F1 or F2

200 and 300 courses

- 6 MN3028 Managerial economics **or** EC2066 Microeconomics
- 7 AC3059 Financial management **or** FN3092 Corporate finance
- 8 AC3091 Financial reporting
- 9 AC3093 Auditing and assurance
- 10 AC3097 Management accounting
- 11 One course from Selection groups E or M
- 12 One 200 or 300 course (or two half courses) from any Selection group

Graduate Entry Route

100 courses

- 1 EC1002 Introduction to economics
- 2 ST104A Statistics 1 (half course) **and** MT105A Mathematics 1 (half course)
- 3 AC1025 Principles of accounting

200 and 300 courses

- 4 MN3028 Managerial economics **or** EC2066 Microeconomics
- 5 AC3059 Financial management **or** FN3092 Corporate finance
- 6 AC3091 Financial reporting
- 7 AC3093 Auditing and assurance
- 8 AC3097 Management accounting
- 9 One course from Selection groups E or M

A portrait of a young woman with dark, wavy hair, smiling slightly. She is wearing a black top under a white cardigan. The background is blurred, showing an indoor setting with light coming from a window.

“I chose to study with the University of London because I had very positive feedback from people who had done the course before, and they had told me about how the standards were very similar to the standards at LSE... it was definitely my first choice.”

Shana Shwetangi
BSc Banking and Finance,
Singapore
LSE MSc Accounting
and Finance, UK

BSc Banking and Finance

Programme overview

'This degree provides you with an understanding of the way in which financial intermediaries and institutions operate and the structure and functioning of financial markets. You will learn about the pricing of financial assets and why and how corporations choose and issue various types of assets. The banking courses provide information on precisely how financial intermediaries operate, both on a domestic level and in the international arena.'

Dr Vicente Cuñat

Programme specifics

- You begin with a strong foundation in quantitative, economic, accounting and finance subjects.
- You progress to a core of compulsory 200 and 300 courses in finance, banking and risk management.
- You can choose optional courses in related areas which complement the core courses to give well-rounded coverage of the major issues and areas of modern financial theory and practice.
- BSc Banking and Finance graduates can take advantage of 'fast track' agreements with certain professional bodies (please see page 12).



"The University of London is recognised worldwide by employers and has a good, reputable alumni network. I had the flexibility to choose subjects that suited my future career and interests. Units such as Investment Management taught me how financial systems work and how investors manage their portfolio, which are very relevant to my current role."

Lim Yun Yi

BSc Banking and Finance, Singapore

Lim Yun Yi was an inaugural recipient of an HSBC-SIM Retail Banking and Wealth Management Scholarship in 2013. She is now employed by the bank as a Senior Personal Wealth Manager. Read more at London Connection: bit.ly/yun-yi

Standard Route

100 courses

- 1 EC1002 Introduction to economics
- 2 ST104A Statistics 1 (half course) **and** MT105A Mathematics 1 (half course)
- 3 FN1024 Principles of banking and finance
- 4 AC1025 Principles of accounting
- 5 One course (or two half courses) from Selection groups F1 or F2

200 and 300 courses

- 6 FN3092 Corporate finance
- 7 EC2020 Elements of econometrics **or** EC2065 Macroeconomics **or** EC2066 Microeconomics
- 8 FN2029 Financial intermediation
- 9 FN3023 Investment management
- 10 One 300 course from Selection groups A or B
- 11 One 300 course (or two half courses) from any Selection group
- 12 One 200 or 300 course (or two half courses) from any Selection group

Graduate Entry Route

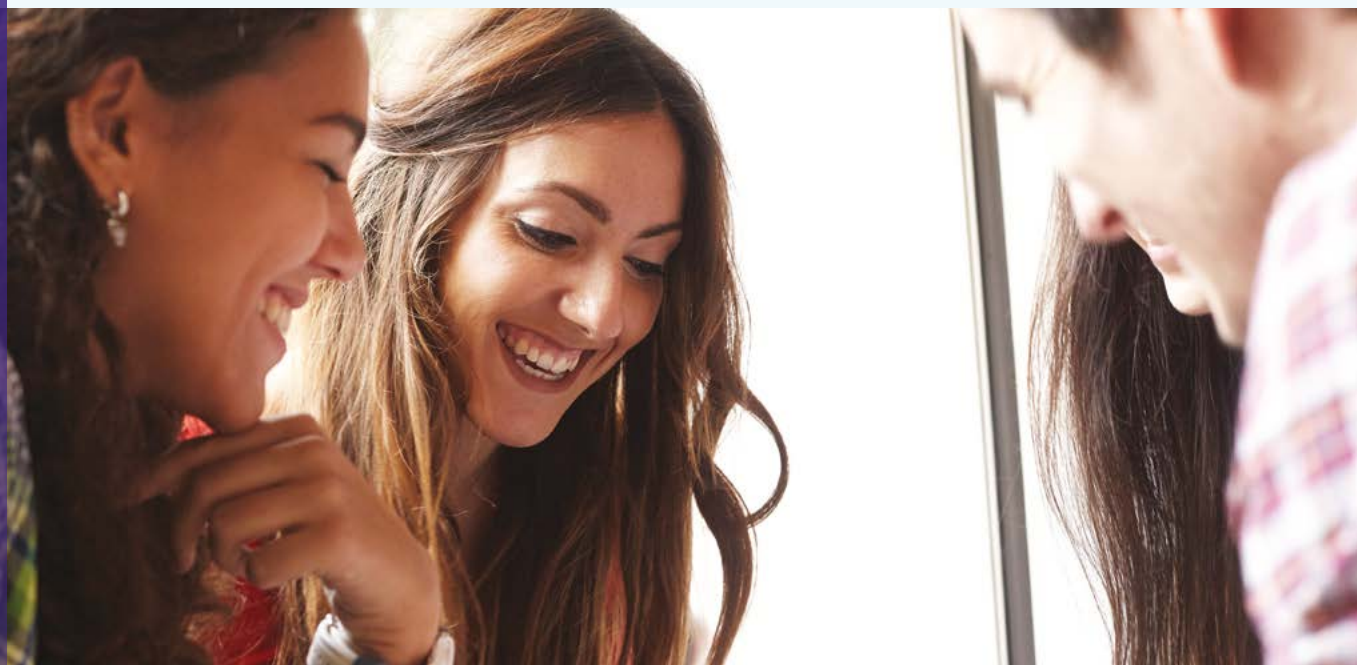
100 courses

- 1 EC1002 Introduction to economics
- 2 ST104A Statistics 1 (half course) **and** MT105A Mathematics 1 (half course)
- 3 FN1024 Principles of banking and finance
- 4 AC1025 Principles of accounting

200 and 300 courses

- 5 FN3092 Corporate finance
- 6 EC2065 Macroeconomics **or** EC2066 Microeconomics
- 7 FN2029 Financial intermediation
- 8 FN3023 Investment management
- 9 One 300 course (or two half courses) from any Selection group

Business and Management programmes



About the programmes

These qualifications will prepare you for the demanding and competitive world of business and management. They combine a study of the core social science methodologies with technical skills such as data analysis and presentation as well as providing practice-oriented knowledge.

You will learn about the political, social and cultural aspects of the business and management environment and acquire the ability to critically assess and challenge discourse and ideas which will be beneficial throughout your career.

If you study the BSc Business and Management degree you can choose from a number of optional courses including managerial economics, organisation theory and strategy.

Programmes offered in this area

Degrees

- BSc Business and Management
- BSc Management and Digital Innovation
- BSc Management with Law

Diplomas (see page 43)

- Graduate Diploma in Management

Where can it lead?

- Accountancy
- Business
- Banking
- Consulting
- General management
- Information and innovation management
- Marketing
- Management consulting
- Further academic study

LSE Academic Coordinators



Dr Jörn Rothe

Dr Rothe was appointed Lecturer in Management in 1997 and is now Director of Studies at the Managerial

Economics and Strategy Faculty Group. He began his studies at the Universities of Regensburg and Bonn in Germany before undertaking postgraduate research at LSE. He specialises in the economics of strategy and competition, managerial economics, and game theory.



Dr Steve Smithson

Dr Smithson is Senior Lecturer in Information Systems for the Department of Management at

LSE. He specialises in e-commerce and the use of information systems within organisations, and has published regularly on information systems since the 1980s.

BSc Business and Management

Programme overview

'This degree programme prepares you for the demanding world of business and management. It looks at business and management issues analytically and critically. The degree provides you with a knowledge and understanding of a number of issues in international management, while allowing you to learn from issues and experiences relevant to your local environment. Most importantly, you will acquire the ability to think independently about business and management decisions, and gain a degree which will be valued by employers looking for people who can demonstrate logical and quantitative reasoning.'

Dr Jörn Rothe

Programme specifics

- Gain the ability to analyse business and management issues from the perspective of various social science disciplines.
- Critically evaluate claims made on a range of management issues.
- Address foundational and contemporary management issues, either public or private according to the courses you choose.
- Develop problem-solving skills by applying theory and theoretical models in practical situations.



"This programme has been an exceptional tool for my future. The academic approach challenges me to manage my time efficiently and to think analytically and critically – skills that are of utmost importance in today's world. This programme has helped me to be a more determined woman who is always aiming higher. I strongly recommend it to anyone wishing to broaden their horizons."

Victoria Osores Gil

BSc Business and Management, Uruguay

Victoria is studying for the BSc Business and Management alongside a degree in International Business at Universidad de Montevideo.

Standard Route

100 courses

- 1 EC1002 Introduction to economics
- 2 MT105A Mathematics 1 (half course) **and** ST104A Statistics 1 (half course)
- 3 AC1025 Principles of accounting
- 4 MN1178 Business and management in a global context

200 and 300 courses

- 5 MN2177 Core management concepts

6,7,8,9 **Four courses** from the following:

- FN3092 Corporate finance **or**
- AC3059 Financial management
- IS2136 Information systems and organisations
- MN3028 Managerial economics
- MN3032 Management science methods
- MN3075 Human resource management
- MN3119 Strategy
- MN3127 Organisation theory: an interdisciplinary approach
- MN3141 Principles of marketing
- SP2079 Elements of social and applied psychology

10,11 **Two 300 courses** from Selection group M

- 12 One 100, 200 or 300 course (or two half courses) from any Selection group

Graduate Route

100 courses

- 1 EC1002 Introduction to economics
- 2 MT105A Mathematics 1 (half course) **and** ST104A Statistics 1 (half course)
- 3 AC1025 Principles of accounting
- 4 MN1178 Business and management in a global context

200 and 300 courses

- 5 MN2177 Core management concepts

6,7,8 **Three courses** from the following (you must choose at least two 300 courses):

- FN3092 Corporate finance **or**
- AC3059 Financial management
- IS2136 Information systems and organisations
- MN3028 Managerial economics
- MN3032 Management science methods
- MN3075 Human resource management
- MN3119 Strategy
- MN3127 Organisation theory: an interdisciplinary approach
- MN3141 Principles of marketing
- SP2079 Elements of social and applied psychology

- 9 One 300 course from Selection group M

BSc Management and Digital Innovation

Programme overview

'Information and communications technology (ICT) is the main driver of innovation in today's world. Digital infrastructures, e-business and social media are transforming markets and everyday life across the globe. They are providing opportunities for start-ups to develop and for traditional organisations to make huge gains in efficiency while moving closer to their customers. New mobile services have fundamentally changed the way that we work and how we spend our leisure time. New business models, based on digital platforms and their eco-systems provide the tools for entrepreneurs to create new businesses and for managers in a variety of industries to improve productivity and profitability. These applications are now migrating to health and other public sector areas where citizens require responsive, low-cost and efficient services.

New waves of innovation, based on data analytics and the Internet of Things, offer unprecedented scope for change in the future. This degree studies digital innovation and information systems as management, business and social phenomena. It provides the skills needed by managers to grab business opportunities and to solve organisational problems using ICT, as well as providing an understanding of the wider social impact of the technology.'

Dr Steve Smithson

Programme specifics

- A focus on how ICT offers new business models and digital innovations while also providing the underlying infrastructure for business and public sector organisations.
- The knowledge needed to take advantage of the fast-changing technologies that are impacting every area of business and management.
- An opportunity to demonstrate your practical business and creative skills through coursework.

Standard Route

100 courses

- 1 IS1060 Introduction to information systems
- 2 MN1178 Business and management in a global context
- 3 IS1181 Digital infrastructures for business

Plus one of the following courses:

- MT105A Mathematics 1 (half course) **and**
- ST104A Statistics 1 (half course) **or**

- AC1025 Principles of accounting **or**

- 4 • FN1024 Principles of banking and finance **or**

- SC1179 Contemporary sociology in a global age

200 and 300 courses

- 5 MN2177 Core management concepts
- 6 IS2184 Information systems management
- 7 IS2182 Innovating digital systems and services
- 8 IS3183 Management and social media
- 9 IS3159 Research project in information systems
- 10 IS3167 Management and innovation of e-business
- 11 One 300 course from Selection group M
- 12 One 100, 200 or 300 course chosen from any of the Selection groups

Graduate Entry Route

100 courses

- 1 IS1060 Introduction to information systems
- 2 MN1178 Business and management in a global context
- 3 IS1181 Digital infrastructures for business

200 and 300 courses

- 4 One 300 course from Selection group M
- 5 MN2177 Core management concepts
- 6 IS2184 Information systems management
- 7 IS2182 Innovating digital systems and services
- 8 IS3159 Research project in information systems
- 9 IS3167 Management and innovation of e-business **or** IS3183 Management and social media

Additional information

Through the Graduate Entry Route the degree takes a minimum of three years to complete.

Professor Leslie Willcocks

Department of
Management, LSE

'Business and Management is central to operating in the modern business world. As a student, you will find understanding and analysing international business and making managerial judgements full of fresh challenges. You will also find that the study of Business and Management not only provides insights, but also gives you the analytical equipment and knowledge to actually begin to perform in a business that operates globally.'

As an LSE professor, my role in the course has been to write the subject guide, and act as an examiner. I teach Global Business Management on the full-time courses at LSE, and research and publish in the areas of global sourcing, strategic management, managing information technologies, organisational change and digital business.'

**"As a student,
you will find
understanding
and analysing
international
business
and making
managerial
judgements full of
fresh challenges."**



Development programmes



About the programmes

These are exciting, relevant and useful subjects to study. They reflect our everyday lives and the world we inhabit. Everyone is aware that the world has been shaken in recent times by the consequences of great natural disasters on human populations.

Development is the process of social and economic change that allows more and more people to reach their potential. Development studies uses various disciplines to give students insights from economics, politics, social theory and geography. The main focus is on economic growth, poverty eradication and political reform at the global level, and in the developing world in particular.

In these programmes you will study the fundamentals of economics and sociology and learn key statistical skills. You then go on to specialise in courses which focus on aspects of development, economics, or environment.

Programmes offered in this area

Degrees

- BSc International Development
- BSc Development and Economics

Diploma (see page 43)

- Graduate Diploma in International Development

Where can it lead?

- Teaching
- Public service professions
- Town planning in local authorities
- Environment agencies
- International development
- Government development agencies

LSE Academic Coordinator



Professor Tim Forsyth

Tim Forsyth is Professor of Environment and International Development at

LSE. His work focuses on understanding contested science and risk within environmental governance. Fluent in Thai, he has conducted research in Thailand and the surrounding region for over 15 years. He has written on climate change governance, forest policies in Asia, and social movements and local governance.

BSc Development and Economics

Programme overview

'Do you want to know more about international development and the causes and solutions to global inequality? If so, this degree may be for you. Studying this degree will provide you with analytical and communication skills that are valued by employers and institutions. Perhaps more importantly, it gives you the chance to gain knowledge from a wide variety of sources that will demonstrate the importance of development, and give you the chance to understand more about what is happening in the world today'.

Professor Tim Forsyth

Programme specifics

- An opportunity to study aspects of development such as urbanisation, housing and infrastructure, poverty and social exclusion, environmental concerns and issues of gender.
- A thorough grounding in the fundamentals of economics, sociology and human geography subjects whose literature demonstrates links with the process of development. Key mathematical and statistical skills are acquired in the early stages of the degree.
- Case study material is drawn widely from Southeast Asia, Latin America and Africa. However you can also use your own knowledge of the development process wherever you live.

Standard Route

100 courses

- 1 EC1002 Introduction to economics
- 2 ST104A Statistics 1 (half course) **and** MT105A Mathematics 1 (half course)
- 3 DV1171 Introduction to international development
- 4 SC1179 Contemporary sociology in a global age

200 and 300 courses

- 5 EC2065 Macroeconomics
- 6 EC2066 Microeconomics
- 7 GY2109 Geographies of development
- 8 EC3044 Economics of development
- 9 One 300 course from Selection groups D or E
- 10 One 300 course from Selection group D
- 11 One 300 course from Selection group D
- 12 One 100, 200 or 300 course (or two half courses) from any Selection group

Graduate Entry Route

100 courses

- 1 EC1002 Introduction to economics
- 2 ST104A Statistics 1 (half course) **and** MT105A Mathematics 1 (half course)
- 3 DV1171 Introduction to international development
- 4 SC1179 Contemporary sociology in a global age

200 and 300 courses

- 5 EC2065 Macroeconomics
- 6 EC2066 Microeconomics
- 7 GY2109 Geographies of development
- 8 EC3044 Economics of development
- 9 One 300 course from Selection groups D or E

Additional information

Through the Graduate Entry Route the degree takes a minimum of three years to complete.

BSc International Development

Programme overview

'The field of International Development is the attempt to understand and to shape processes of social and economic change in order to reduce poverty and to create a better life for poorer people, and the countries where they live. It combines social science approaches from disciplines such as economics, politics, sociology and demography. It also requires an understanding of global processes of economics and politics as well as more local, national and sub-national processes. Typical themes of International Development include poverty alleviation, economic growth; aid and assistance; the management of local and global environmental problems and the political economy of social change.'

Professor Tim Forsyth

Programme specifics

- A wide-ranging training in diverse social science skills, and in the subject matter of international development.
- You will gain experience in themes of economic, political and social analysis, as well as related fields through optional courses.
- The degree connects different approaches to development and addresses real-world problems relating to economic growth, politics, humanitarianism, poverty, environment and governance in poorer countries.



"The International Programmes not only gave me the opportunity to study at my own rhythm alongside my job, it offered me the chance to learn from the LSE teachers who provide very high quality courses."

Malorie Cornier

BSc International Development, France

Since graduating from the BSc International Development, Malorie has moved to New York to pursue her career ambitions.

Standard Route

100 courses

- DV1171 Introduction to international development
- 2,3,4 **Three courses** chosen from:
 - EC1002 Introduction to economics
 - GY1009 Human geography
 - IR1011 Introduction to international relations
 - SC1179 Contemporary sociology in a global age
 - ST104A Statistics 1 (half course) **and**
 - MT105A Mathematics 1 (half course)

200 and 300 courses

- DV3165 Development management
- GY2109 Geographies of development
- 7,8 **Two courses** chosen from:
 - EC2065 Macroeconomics
 - EC2066 Microeconomics
 - DV2169 Economic policy analysis in international development
 - GY2164 Economic geography
 - IR3026 International political economy
 - SC3160 Population and society
- 9,10 **Two courses** chosen from:
 - EC3044 Economics of development
 - DV3162 Complex emergencies and humanitarian responses
 - DV3166 Global environmental problems and politics
- One 300 course from Selection groups D, E, G, IR or S
- One course (or two half courses) from any Selection group

Graduate Entry Route

100 courses

- DV1171 Introduction to international development
- 2, 3, 4 **Three courses** chosen from:
 - EC1002 Introduction to economics
 - GY1009 Human geography
 - IR1011 Introduction to international relations
 - SC1179 Contemporary sociology in a global age
 - ST104A Statistics 1 (half course) **and**
 - MT105A Mathematics 1 (half course)

200 and 300 courses

- DV3165 Development management
- GY2109 Geographies of development
- 7,8 **Two courses** chosen from:
 - EC2065 Macroeconomics
 - EC2066 Microeconomics
 - DV2169 Economic policy analysis in international development
 - GY2164 Economic geography
 - IR3026 International political economy
 - SC3160 Population and society
- 9 EC3044 Economics of development **or** DV3162 Complex emergencies and humanitarian responses **or** DV3166 Global environmental problems and politics



Dr Margaret Bray

Department of Economics, LSE

'Economics opens up your understanding of the world. You are engaging with economics every time you buy or sell, make decisions at work, or debate and form public policy.

Your journey through economics in the EMFSS programme starts with Introduction to Economics EC1002. This introduces you to the two fundamental branches of economics, microeconomics and macroeconomics.

Microeconomics studies the factors that shape the decisions of individual firms and households. What are the possibilities, rewards and penalties? How do households and firms interact in different types of market?

Macroeconomics looks at the behaviour of entire economies, with a focus on the determinants of output, employment, inflation and economic growth. Both microeconomics and macroeconomics raise questions of public policy.

Economics is exciting and always developing. It will challenge you. It is in facing that challenge that you will grow, both professionally and personally.'

"Economics is exciting and always developing. It will challenge you."

Economics programmes



About the programmes

What do economists study? You will look at a wide range of questions from how much of its income a household chooses to save and what goods it chooses to buy, to how all the households and businesses in the country interact to determine national output, the balance of payments, inflation and employment.

The degrees listed on this page have the same core courses which provide a thorough foundation in economics, mathematics and statistics. Subsequently you may choose from a range of more specialised options covering economic applications, policy or further theory.

If you opt for the BSc Economics and Finance you will go on to take specified courses in finance subjects which will develop the quantitative skills and institutional knowledge required by financial economists. If you choose BSc Economics and Management you will study courses which help you to understand key issues relating to the effective management of organisations.

Programmes offered in this area

Degrees

- BSc Economics
- BSc Economics and Finance
- BSc Economics and Management
- BSc Economics and Politics
- BSc Mathematics and Economics

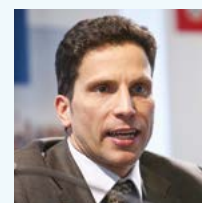
Diploma (see page 42)

- Graduate Diploma in Economics

Where can it lead?

- Industry
- Finance
- Government
- International organisations
- Management consultancy
- Banking
- Accountancy
- Risk or fund management
- Further academic study

LSE Academic Coordinators



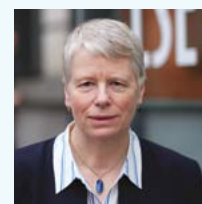
Dr Eiko

Thielemann

Dr Thielemann is Associate Professor in Political Science and Public Policy in the Department of

Government and the European Institute. His research focuses on EU and comparative European policy-making, with particular focus on issues such as asylum and immigration, multi-level governance and regional and state aid policy.

Dr Jörn Rothe (see page 20)



Dr Margaret Bray

Dr Bray is Reader in the Department of Economics at LSE, specialising in portfolio theory as well as agency

problems in financial markets. She is an Associate of the Financial Markets Group as well as a Theory Group Associate for STICERD (the Suntory and Toyota International Centres for Economics and Related Disciplines).



Professor Martin Anthony

Martin Anthony is Professor of Mathematics at LSE. He received an LSE Education

Excellence Award in 2016 and was also listed as one of the 1,000 most influential people in London by the Evening Standard. His research interests include how mathematics evidences machine learning, as well as Boolean and pseudo-Boolean functions.

Dr Vicente Cuñat (see page 16)

BSc Economics

Programme overview

'This degree builds on a foundation of economic theory and the necessary mathematics and statistics in the 100 courses. It deepens that intellectual platform in the 200 and 300 courses: a wide choice of more specialised options including economic policy, and the application of economic theory to particular topics. Depending on your choice of courses, the study of economics will give you greater understanding both of particular areas such as public economics or international trade, and of the broader behaviour of economies. While much of the subject is settled territory, one of the excitements of economics is that it remains work in progress, as the recent international economic crises makes clear.'

Dr Margaret Bray

Programme specifics

- You will benefit from the expertise of LSE's Department of Economics, frequently ranked number one outside the USA for its published research.
- You will study subjects ranging from how all the households and businesses in the country interact to determine national output, to the balance of payments, inflation and unemployment.
- You will learn an approach to analysing both social and individual decision-making and a whole range of problems often thought of as being outside the conventional domain of economics.



"The University of London International Programmes has made me find a balance between being independent enough to work by myself and humble enough to ask for help. The discussion forum and virtual learning environment are extremely

useful for this. I consider myself lucky to have friends who are also studying at my institution, since we are constantly supporting and encouraging each other."

Jennifer Lucía Valdivieso Mendoza
BSc Economics (current student), Peru

Jennifer Lucía is currently studying for a University of London degree in parallel with an Economics degree at the Universidad del Pacífico.

Standard Route

100 courses

- 1 EC1002 Introduction to economics
- 2 ST104A Statistics 1 (half course) **and** ST104B Statistics 2 (half course)
- 3 MT105A Mathematics 1 (half course) **and** MT105B Mathematics 2 (half course)
- 4 One course (or two half courses) from Selection groups F1 or F2

200 and 300 courses

- 5 EC2020 Elements of econometrics
- 6 EC2065 Macroeconomics
- 7 EC2066 Microeconomics
- 8 One 300 course from Selection group E
- 9 One 300 course from Selection group E
- 10 One 300 course from Selection group E
- 11 One 200 or 300 course from Selection group E
- 12 One 100, 200 or 300 course (or two half courses) from any Selection group

Graduate Entry Route

100 courses

- 1 EC1002 Introduction to economics
- 2 ST104A Statistics 1 (half course) **and** ST104B Statistics 2 (half course)
- 3 MT105A Mathematics 1 (half course) **and** MT105B Mathematics 2 (half course)

200 and 300 courses

- 4 EC2020 Elements of econometrics
- 5 EC2065 Macroeconomics
- 6 EC2066 Microeconomics
- 7 One 300 course from Selection group E
- 8 One 300 course from Selection group E
- 9 One 200 or 300 course from Selection group E

BSc Economics and Finance

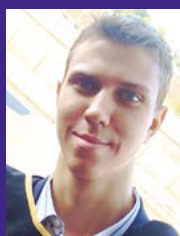
Programme overview

'This degree has been designed to provide the economic reasoning, quantitative skills and institutional knowledge required by financial economists to solve practical problems arising in finance. These skills should make graduates highly suited for further studies as well as for a career in investment banking or in financial markets. The degree offers you the opportunity to combine in-depth studies in economics and finance. It provides you with the analytical tools from the fields of mathematics, statistics, economics and econometrics together with the institutional knowledge required to work as a financial economist.'

Dr Vicente Cuñat

Programme specifics

- A thorough programme grounded on quantitative, economics and finance subjects.
- Those pursuing the Standard Route can choose optional courses in economics and finance as well as in related areas such as accounting.
- More generally, the degree is designed to develop excellent analytical skills which should be useful in the context of further studies or work as an economist.



"The most useful skill I learned from the University of London is understanding the causes of things. To think critically and never take anything for granted without your own analysis – that is what every university should teach."

Vassiliy Kosov

BSc Economics and Finance, Russia

Vassiliy studied at the International College of Economics and Finance in Russia. He was awarded a scholarship by LSE to study for an MSc in Finance and Private Equity. Read more at our online magazine, London Connection: bit.ly/lc-vassiliy-kosov

Standard Route

100 courses

- 1 EC1002 Introduction to economics
- 2 ST104A Statistics 1 (half course) **and** ST104B Statistics 2 (half course)
- 3 MT105A Mathematics 1 (half course) **and** MT105B Mathematics 2 (half course)
- 4 FN1024 Principles of banking and finance

200 and 300 courses

- 5 EC2065 Macroeconomics
- 6 EC2066 Microeconomics
- 7 EC2020 Elements of econometrics
- 8 FN3092 Corporate finance
- 9 EC3115 Monetary economics **or** EC3099 Industrial economics
- 10 FN3142 Quantitative finance
- 11 One 300 course (or two half courses) from any Selection group
- 12 One 100, 200 or 300 course (or two half courses) from any Selection group

Graduate Entry Route

100 courses

- 1 EC1002 Introduction to economics
- 2 ST104A Statistics 1 (half course) **and** ST104B Statistics 2 (half course)
- 3 MT105A Mathematics 1 (half course) **and** MT105B Mathematics 2 (half course)
- 4 FN1024 Principles of banking and finance

200 and 300 courses

- 5 EC2065 Macroeconomics
- 6 EC2066 Microeconomics
- 7 EC2020 Elements of econometrics
- 8 FN3092 Corporate finance
- 9 FN3142 Quantitative finance

Additional information

Through the Graduate Entry Route the degree takes a minimum of three years to complete.

BSc Economics and Management

Programme overview

'What makes management such an interesting subject is the combination of so many fields, with economics being central. This degree provides you with economic concepts that are relevant for management and shows you how to apply them. It also gives you the opportunity to acquire the foundations of complementary disciplines like finance, accounting, sociology, as well as the necessary quantitative methods. Together with your optional course choices these subjects cover all relevant aspects of management from many different perspectives. As a result you will be able to understand how organisations work and how they interact. Analysing the structure and strategies of firms will allow you to understand the evolution of industries and the functioning of markets. This ability to apply economic reasoning and to think independently about management is critical for managers and entrepreneurs.'

Dr Jörn Rothe

Programme specifics

- A strong emphasis on social science theory and practice.
- Knowledge and understanding of a range of issues in international management and economics.
- A degree which will be valued by employers who are looking for people who can demonstrate logical and quantitative reasoning.



"The reputation of the University and my college, LSE, inspired trust. Add flexibility and reasonable cost and you know why I selected the University of London International Programmes."

Tina Goryucheva

BSc Economics and Management, Dubai

Tina is studying for her degree alongside her role as Marketing Manager at a green technology firm. Read more in our online magazine, London Connection: bit.ly/lc-goryucheva

Standard Route

100 courses

- 1 EC1002 Introduction to economics
- 2 MT105A Mathematics 1 (half course) **and** ST104A Statistics 1 (half course)
- 3 One course (or two half courses) from Selection groups F1 or F2
- 4 AC1025 Principles of accounting
- 5 MN1178 Business and management in a global context

200 and 300 courses

- 6 MN2177 Core management concepts
- 7 MN3028 Managerial economics **or** EC2066 Microeconomics
- 8 EC2065 Macroeconomics
- 9 **One course** taken from the following:
 - FN3092 Corporate finance **or**
 - AC3059 Financial management
 - IS2136 Information systems and organisations
 - MN3032 Management science methods
 - MN3075 Human resource management
 - MN3119 Strategy
 - MN3127 Organisation theory: an interdisciplinary approach
 - MN3141 Principles of marketing
 - SP2079 Elements of social and applied psychology
- 10 One 300 course from Selection group E
- 11 One 300 course from Selection group M
- 12 One course from Selection groups E, M or S

Graduate Entry Route

100 courses

- 1 EC1002 Introduction to economics
- 2 MT105A Mathematics 1 (half course) **and** ST104A Statistics 1 (half course)
- 3 AC1025 Principles of accounting
- 4 MN1178 Business and management in a global context

200 and 300 courses

- 5 MN2177 Core management concepts
- 6 MN3028 Managerial economics **or** EC2066 Microeconomics
- 7 EC2065 Macroeconomics
- 8 **One course** taken from the following:
 - FN3092 Corporate finance **or**
 - AC3059 Financial management
 - IS2136 Information systems and organisations
 - MN3032 Management science methods
 - MN3075 Human resource management
 - MN3119 Strategy
 - MN3127 Organisation theory: an interdisciplinary approach
 - MN3141 Principles of marketing
 - SP2079 Elements of social and applied psychology
- 9 One 300 course from Selection group E

BSc Economics and Politics

Programme overview

'This degree provides you with an understanding of the fundamental aspects of economic analysis, as well as enabling you to formulate and develop economic and political arguments in a logical manner. You will learn how to apply economic principles and quantitative techniques to the analysis of economic data, and will show a detailed and critical understanding of the main theoretical debates in the field of politics.'

Dr Eiko Thielemann

Programme specifics

- You will gain an understanding of economics and politics in the wider context of the social sciences.
- Learn how to demonstrate your knowledge and skills in applying economic reasoning to the analysis of a wide range of policy issues.
- Gain a detailed and critical understanding of the main theoretical debates in the field of economics and politics.



"This programme provides rigorous economic training (including mathematics and statistics) combined with the study of politics, which includes optional courses in international relations in the final year. It gives students the opportunity to understand the realities and structures of modern societies. I feel extremely proud for being able to study with the University of London International Programmes."

Eleni Tsoukatou

BSc Economics and Politics (current), Greece

Eleni is studying for her University of London degree alongside a degree from the University of Athens. She is also a regular contributor to the student blog.

Additional information

Through the Graduate Entry Route the degree takes a minimum of three years to complete.

Standard Route

100 courses

- 1 EC1002 Introduction to economics
- 2 MT105A Mathematics 1 (half course) and ST104A Statistics 1 (half course)
- 3 PS1130 Introduction to modern political thought
- 4 PS1172 Introduction to political science

200 and 300 courses

- 5 EC2065 Macroeconomics
- 6 EC2066 Microeconomics
- 7 PS2082 Comparative politics
- 8 **One course** taken from the following:
 - EC3015 Economics of labour
 - EC3016 International economics
 - EC3022 Public economics
 - EC3044 Economics of development
 - EC3099 Industrial economics
 - EC3115 Monetary economics
- 9 **One course** taken from the following:
 - PS3086 Democracy and democratisation
 - PS3088 Politics and policies of the European Union
 - PS3108 Political analysis and public choice
- 10 One 300 course from Selection group E
- 11 One 300 course from Selection group IR or P
- 12 One 200 or 300 course from any Selection group

Graduate Entry Route

100 courses

- 1 EC1002 Introduction to economics
- 2 MT105A Mathematics 1 (half course) and ST104A Statistics 1 (half course)
- 3 PS1130 Introduction to modern political thought or PS1172 Introduction to political science

200 and 300 courses

- 4 EC2065 Macroeconomics
- 5 EC2066 Microeconomics
- 6 PS2082 Comparative politics
- 7 **One course** taken from the following:
 - EC3015 Economics of labour
 - EC3016 International economics
 - EC3022 Public economics
 - EC3044 Economics of development
 - EC3099 Industrial economics
 - EC3115 Monetary economics
- 8 **One course** taken from the following:
 - PS3086 Democracy and democratisation
 - PS3088 Politics and policies of the European Union
 - PS3108 Political analysis and public choice
- 9 One 300 course from selection group E, IR or P

BSc Mathematics and Economics

Programme overview

'This degree focuses on how mathematics and economics connect and interact. You will not only acquire technical skills, but also powers of analysis. The ability to think analytically will enable you to adapt to new developments in your chosen career. We believe that the combination of mathematics and economics instils such ability. You will be able to understand how rigorous proofs can be given in mathematics, and see how the theories developed can be used in an economics context. The general skills you will gain will enable you to proceed to a successful career in many fields. In this course, you will learn how formal mathematics is done: why it is important to have precise definitions, and how results can be proved and techniques justified.'

Professor Martin Anthony

Programme specifics

- A thorough programme providing an understanding in advanced areas of mathematics, carefully structured so that these topics fit well with the economics topics.
- The 100 courses which you take first have slightly more mathematical and statistical topics because these have to be studied before their application in the economics courses.
- There is some flexibility in the choice of papers you take as 200 and 300 courses, but generally, about half of your papers will be related to economics, and half to mathematics.



"Studying has been extremely challenging but at the same time very rewarding. My result in the Finance and Valuation course was particularly pleasing as it is relevant to my career. Completing the degree has opened opportunities to gain experience of more quantitative and strategic aspects of our business."

Fuad Ahmed
BSc Mathematics and Economics, UK

Fuad is currently working in the investment management department of a life insurance company.

Standard Route

100 courses

- 1 EC1002 Introduction to economics
- 2 ST104A Statistics 1 (half course) **and** ST104B Statistics 2 (half course)
- 3 MT1173 Algebra
- 4 MT1174 Calculus

200 and 300 courses

- 5 EC2065 Macroeconomics
- 6 EC2066 Microeconomics
- 7 MT2116 Abstract mathematics
- 8 MT2176 Further calculus (half course) **and** MT2175 Further linear algebra (half course)
- 9 One course from the following:
 - EC3044 Economics of development
 - EC2020 Elements of econometrics
 - EC3015 Economics of labour
 - EC3016 International economics
 - EC3022 Public economics
 - EC3099 Industrial economics
 - EC3115 Monetary economics
 - EC3120 Mathematical economics
- 10 One 300 course (or two half courses) from Selection group N
- 11 One 300 course from Selection group E
- 12 One 300 course (or two half courses) from Selection groups E or N

Additional information

Applicants applying to the BSc Mathematics and Economics degree must demonstrate competence in Mathematics at least equivalent to UK GCE 'A' level at Grade E or above.

Social science programmes



About the programmes

These qualifications allow you to develop an in-depth understanding of one or two social science disciplines and also take individual subjects from others, so you develop a breadth of knowledge and understanding of the social world.

All the programmes develop skills in the analysis of key issues of contemporary society – for example, issues of order and stability; issues relating to inequality and injustice. These skills include the ability to read critically and reflect on theories and practices, and to think creatively in order to produce well-crafted essays in your final examinations.

Other social sciences programmes, such as information systems are steeped in social science reasoning and application, preparing you for a wide range of careers where issues of communication are central. Many of the degrees contain some quantitative courses which provide the rigour and reasoning required for the study of the social sciences.

Programmes offered in this area

Degrees

- BSc Accounting with Law
- BSc International Relations
- BSc Management and Digital Innovation
- BSc Management with Law
- BSc Mathematics and Economics
- BSc Politics and International Relations

Diplomas

- Graduate Diploma in Digital Innovation
- Graduate Diploma in International Relations
- Graduate Diploma in Mathematics
- Graduate Diploma in Politics
- Graduate Diploma in Social Sciences
- Graduate Diploma in Sociology

Where can it lead?

- Business
- Civil service
- Government
- Journalism
- International organisations
- Media

LSE Academic Coordinators



Dr Robert Falkner

Dr Falkner is Associate Professor of International Relations at LSE. He specialises in global political

economy, global environmental politics and the role of business in international relations. He is Academic Director of the TRIUM Global Executive MBA, and an associate of both the LSE Grantham Research Institute and of Chatham House.

Dr Eiko Thielemann (see page 28)

BSc International Relations

Programme overview

'International Relations started out as the study of an international system composed first and foremost by nation-states. Today, the discipline considers the role not only of states but also of a wide range of international actors, from international organisations to multinational corporations, and from civil society groups to terrorist networks. At its heart are questions concerning war and peace, international order and stability, and the forces that produce change in the international system. In an era of economic globalisation, International Relations is also concerned with the close links between international politics and the global economy, and whether globalisation is producing a more integrated or more fragmented world.'

Dr Robert Falkner

Programme specifics

- Provides a critical understanding of the core literature and main theoretical debates in the field of international relations.
- You study the same compulsory 200 and 300 courses as students at LSE.
- A framework for understanding the international aspects of problems such as environmental degradation, the globalising of economy, development and human rights, which are recognised to be of increasing importance in the 21st century.



"Studying with the International Programmes has widened my horizons, allowed me to discover myself and, most importantly, pursue my career in music. Meeting Professor Emeritus Michael Cox during the LSE Summer School was the experience of a lifetime.

His enthusiasm planted more confidence and faith in me about studying this programme."

Budhaditya Bhattacharyya

BSc International Relations (current student), India

Budhaditya, an International Relations student and blogger, attended the LSE Summer School in 2015 and visited our campus in 2016. See his reflections on London Connection: bit.ly/budhaditya

Standard Route

100 courses

- 1 IR1011 Introduction to international relations
- 2 PS1130 Introduction to modern political thought **or** PS1172 Introduction to political science
- 3 One 100 course (or two half courses) from Selection group F1
- 4 One 100 course (or two half courses) from Selection groups F1 or F2

200 and 300 courses

- 5 IR3026 International political economy
- 6 IR3083 International political theory
- 7 IR2085 International organisations
- 8 IR2137 Foreign policy analysis
- 9 IR3140 Security and international relations
- 10 One 300 course from Selection groups IR or P
- 11 One course (or two half courses) from Selection groups E, IR, P or S
- 12 One 100, 200 or 300 course (or two half courses) from any Selection group

Graduate Entry Route

100 courses

- 1 IR1011 Introduction to international relations
- 2 PS1130 Introduction to modern political thought **or** PS1172 Introduction to political science
- 3 One 100 course (or two half courses) from Selection group F1
- 4 One 100 course (or two half courses) from Selection groups F1 or F2

200 and 300 courses

- 5 IR3026 International political economy
- 6 IR3083 International political theory
- 7 IR2085 International organisations
- 8 IR2137 Foreign policy analysis
- 9 IR3140 Security in international relations

BSc Politics and International Relations

Programme overview

'This degree enables you to combine a study of both politics and international relations. How political power is distributed and organised within the state and between states is central to this specialism. International relations is concerned with the behaviour of states and their relations with each other. It considers some of the great issues of international society, such as the causes of war and the conditions of peace. But it also concerns international economic relations and such questions as globalisation: its advantages and disadvantages. I have been involved in the International Programmes for many years and my particular interests are international organisations, especially the UN system and the European Union.'

Dr Eiko Thielemann

Programme specifics

- You will study various types of regime, the institutions of representative and responsible government, the process of politics and the forming and implementation of public policy.
- You will analyse political relationships in the economic and social context and take into account historical influences on contemporary politics.
- You will focus on the changing nature of international society and the principles of international order and justice in the post-Cold War period.
- You will learn to analyse detailed social and political data and to form balanced judgements.



"A degree in Politics and International Relations is a well-respected one. It gives you a background and general knowledge which you can later use in so many different spheres. And the programme offered by the University of London is really interesting and up-to-date."

Mariam Tokhadze

BSc Politics and International Relations, Georgia

Mariam works for the Ministry of Defence in Georgia as a Chief Specialist in the Defence Policy and Planning Department. Read more in our online magazine, London Connection: bit.ly/lc-mariamtokhadze

Standard Route

100 courses

- 1 IR1011 Introduction to international relations
- 2 PS1130 Introduction to modern political thought or PS1172 Introduction to political science
- 3 One course (or two half courses) from Selection group F1
- 4 One course (or two half courses) from Selection group F1

200 and 300 courses

- 5 PS2082 Comparative politics
- 6 IR3083 International political theory
- 7 IR2084 Nationalism and international relations
- 8 PS3086 Democracy and democratisation
- 9 One 300 course from Selection groups IR or P
- 10 One course (or two half courses) from Selection groups E, IR, P or S
- 11 One course (or two half courses) from Selection groups E, IR, P or S
- 12 One 100, 200 or 300 course (or two half courses) from any Selection group

Graduate Entry Route

100 courses

- 1 IR1011 Introduction to international relations
- 2 PS1130 Introduction to modern political thought or PS1172 Introduction to political science
- 3 One course (or two half courses) from Selection group F1

200 and 300 courses

- 4 PS2082 Comparative politics
- 5 IR3083 International political theory
- 6 IR2084 Nationalism and international relations
- 7 PS3086 Democracy and democratisation
- 8 One 300 course from Selection groups IR or P
- 9 One 100, 200 or 300 course (or two half courses) from Selection groups E, F1, IR, P or S



“The academic direction from the LSE made the degree so much more interesting. For example, the International Political Economy module is written by Dr Robert Falkner, one of the most important theorists in this field. This degree is different because you’ve got to be so motivated, and I think employers recognise that. It’s a huge asset when you go into the professional world.”

Daniel El-Gamry, UK
BSc Politics and
International Relations

Daniel studied with support from the New College of the Humanities. He is now pursuing an MSc in International Relations at LSE.

Joint Laws programmes



Programmes available

- BSc Accounting with Law
- BSc Management with Law

These degrees aim to set the study of accounting, finance and law, and the study of management and law, in a broader social science framework.

For more information about these joint programmes visit:
londoninternational.ac.uk/courses

Additional resources for law courses only

If you register for a law course, in addition to subject guides and past examination papers you also receive:

- Studying English law with the University of London (an introductory guide to the basics of common law legal systems).
- Study packs containing key readings for all the core subjects and selected options.
- Learning skills for law containing advice on study skills, developing English language and legal English skills, reading cases and statutes and guidance on examination technique.

- Pre-exam updates, to make sure that you are up to date with developments in each subject as of February of the current year and are given details of any new editions of textbooks.

Pre-course exercises

These exercises offer a 'taster' so that you can try out the type of skills you will be expected to develop as you go through the Laws programme.

Student Portal

The Student Portal allows you to access the VLE for laws students, which provides a centralised location for accessing many resources and hosts:

- law subject pages with news and updates, provided by legal academics associated with the Laws programme
- discussion forums where you can debate the finer points of your subjects
- full-text versions of subject guides and other study materials
- facilities for you to set up your own profile pages

- links from the VLE take you to the Online Library, programme resources and key external sites.

You can also access online legal research exercises. These build on your ability to find primary and secondary legal materials using electronic sources, as well as hard copy/paper sources in libraries, and to conduct legal research more generally.

"The degree programme meant that I could work and study and become better qualified. Embarking upon a Management with Law qualification has made me a better HR professional and business partner."

Andrea Salvador
BSc Management with Law,
Trinidad & Tobago

Graduate Diplomas

Who are they for?

The Graduate Diplomas (formerly known as Diplomas for Graduates) enable you to extend either the depth or range of your previous undergraduate study. The Diplomas are comprised largely of honours-level courses drawn from the undergraduate EMFSS syllabus. Specifically, they are aimed at graduates who wish to:

- acquire and demonstrate vocational skills in a particular field in the workplace and beyond or
- use the Diploma as a basis for progression into postgraduate study and whose first degree is in an unrelated field or
- gain a stronger basis for entry to postgraduate study at a university and whose first degree may not be readily acceptable as equivalent to a good UK honours degree.



Features

As well as developing subject-specific skills, Graduate Diplomas enable you to question and analyse information, develop arguments, and bolster your analytical and communicative competence.

Entry to master's programmes is competitive, and at the discretion of each admitting university, so you should confirm with the relevant university whether the Graduate Diploma is acceptable for entry and, if so, what mark is needed.

When honours-level courses are taken as part of a bachelors degree, you will normally be familiar with the subject matter through having taken prerequisite courses earlier in the degree. While graduates are permitted to register for these awards without taking the prerequisites, you should be prepared for the difficulty of the courses. For example, you are advised to have a firm grasp, at undergraduate level, of mathematics or economics before embarking on honours-level courses in these subjects.



Online support and tuition:

CEG Digital cegonline.london

As a registered teaching centre, Cambridge Education Group (CEG) is the only recognised institution delivering programmes 100% online so that you can be taught and supported wherever you are in the world – at times that suit you, without travel.

Programmes are available whether you want to take the whole Graduate Diploma through CEG, wish to supplement your independent study for the full course or need support for single modules.

CEG has half a century of experience in delivering the highest quality academic programmes. You will access first-class online materials and be supported by LSE tutors who will ensure that you are thoroughly prepared for your exams. Interaction with tutors and other students will be highly engaging, delivered via a state-of-the-art online learning platform so that you are inspired to reach, and surpass, your goals.

Graduate Diplomas

Structures

Each Graduate Diploma is made up of four courses, which can be taken in any order (there are no prerequisites). You have between one and five years to complete the programme.

- You are advised to have a firm grasp, at undergraduate level, of mathematics or economics before embarking on honours-level courses in these subjects.
- If you hold a professional qualification and/or postgraduate qualification without a full first degree, you cannot be considered for admission to a Graduate Diploma.
- If you apply for the Graduate Diploma in Mathematics you are advised that, although not a formal entrance requirement, it is your responsibility to ensure that before you start this programme your mathematics is already at least at the standard of a first year undergraduate degree in mathematics and includes multivariate calculus.
- If you apply for the Graduate Diploma in International Relations you are exempt from the requirement to demonstrate competence in Mathematics. If you wish to transfer from this programme to another Graduate Diploma at a later stage, however, you will be required to demonstrate competence in Mathematics as described.

Entrance requirements

You must:

- hold an acceptable bachelor degree **or**
- an acceptable master's degree (or any other acceptable/appropriately accredited Level 7 award) provided this is at least one-year full time in duration; **or**
- an acceptable Level 5 or Level 6 award (such as an HND or Graduate Certificate) provided this is at least one-year full time in duration. In addition applicants must submit evidence of at least two years' relevant work experience
- demonstrate competence in Mathematics at least equivalent to UK GCSE/GCE O level at Grade C or above* **and**
- meet our English language requirement. We may require a test of proficiency in English.

*Applicants applying to the Graduate Diploma in Mathematics must demonstrate competence in Mathematics at least equivalent to UK GCE A level at Grade E or above.

Applicants applying to the Graduate Diploma in International Relations are not required to demonstrate competence in Mathematics.

For full details on how to meet our entrance requirements, including further information on our General Entrance Requirements, UK GCSE/GCE O level equivalents, UK GCE A level equivalents and English language requirements you should visit: londoninternational.ac.uk/courses/search

Classification

You must pass four full courses to be awarded the Graduate Diploma. One resit may be attempted for any course failed. Graduate Diplomas will be classified as Distinction, Merit or Pass. A student who has failed a course twice or two courses once is eligible for a Pass grade only.

Transfer

You will not be permitted to transfer from the Graduate Diploma to the related BSc or other degrees or to other qualifications offered through the International Programmes. You may transfer between the different Graduate Diplomas. A student who fails a course twice may change to another course, within the five-year registration period, provided that the failed course is not compulsory on the Graduate Diploma to which they wish to transfer.

Please note: there is no APL offered for any course on the Graduate Diploma programmes.

"I consider this programme as a base for everyone who wants to build his/her career in the financial and banking sectors. I want to thank the University of London for giving me the chance to study at one of the best universities in the world."

Lusine Aslanyan
Diploma for Graduates in
Finance, Singapore

A portrait of Perry Jackson, a man with short brown hair and a beard, smiling. He is wearing a dark blue sweater. The background is blurred, showing warm, golden light.

“I chose to study the Graduate Diploma in Economics through the University of London because it’s flexible. It’s also got a great, great brand. I love the fact that the LSE provided the academic direction. I really think that the LSE’s involvement in my diploma benefits me, primarily because I really wanted to study at LSE for my Masters, and I’ve now managed to do that. I’m here...”

Perry Jackson, New Zealand

Graduate Diploma in
Economics (current) / MSc
Environmental Economics and
Climate Change, LSE, 2017

Graduate Diploma structures

Additional information

All structures listed will be subject to confirmation in the 2017–2018 Programme regulations. The Programme regulations also contain full details on the rules that govern the choice of any course, please see: londoninternational.ac.uk/regs
Selection groups are listed on pages 50–52.

Accounting	Digital Innovation	Economics
One compulsory course	Three compulsory courses	Three compulsory courses
AC1025 Principles of accounting	IS2184 Information systems management	EC2020 Elements of econometrics
Two courses (one of which must be a 300 course) chosen from:	IS2182 Innovating digital systems and services	EC2065 Macroeconomics
AC3091 Financial reporting	IS3159 Research project in information systems	EC2066 Microeconomics
AC3059 Financial management or FN3092 Corporate finance	One course chosen from:	Plus
AC3093 Auditing and assurance	IS1181 Digital infrastructures for business	One 300 course with the prefix EC chosen from Selection group E.
AC3097 Management accounting	IS3167 Management and innovation of e-business	
AC3143 Valuations and securities analysis	IS3183 Management and social media	
Plus		
One 200 or 300 course (or two half courses) chosen from any Selection group, including any course not selected above.		
Banking	E-Business and Social Media	Finance
One compulsory course	Three compulsory courses	One compulsory course
FN1024 Principles of banking and finance	IS1181 Digital infrastructures for business	FN3092 Corporate finance
Two courses (one of which must be a 300 course) chosen from:	IS3167 Management and innovation of e-business	Two courses (one of which must be a 300 course) chosen from:
AC3091 Financial reporting	IS3183 Management and social media	AC3091 Financial reporting
AC3059 Financial management or FN3092 Corporate finance	One course chosen from:	AC3093 Auditing and assurance
AC3093 Auditing and assurance	IS2184 Information systems management	AC3143 Valuation and securities analysis
AC3143 Valuation and securities analysis	IS3159 Research project in information systems	FN2029 Financial intermediation
FN2029 Financial intermediation	MN3119 Strategy	FN3023 Investment management
FN3023 Investment management	MN3141 Principles of marketing	FN3142 Quantitative finance
FN3142 Quantitative finance		Plus
Plus		One 200 or 300 course from any Selection group.
One 200 or 300 course (or two half courses) chosen from any Selection group including any course not selected above.		

International Development
One compulsory course
DV1171 Introduction to international development
Two courses chosen from: (at least one of which must be a 300 course with prefix DV)
DV3162 Complex emergencies and humanitarian responses
DV3165 Development management
DV3166 Global environmental problems and politics
DV2169 Economic policy analysis in international development or
EC3044 Economics of Development
GY2109 Geographies of development
GY2164 Economic geography
SC3057 Social policy
SC3160 Population and society
Plus
One 300 course (or two half courses) chosen from any Selection group, including any course not selected above.

International Relations
Three courses chosen from: (at least one of which must be a 300 course)
IR1011 Introduction to international relations
IR3083 International political theory
IR2084 Nationalism and international relations
IR2085 International organisations
IR2137 Foreign policy analysis
IR3026 International political economy
IR3140 Security and international relations
Plus
One 300 course (or two half courses) chosen from any Selection group, including any course not selected above.

Management
Two compulsory courses
MN1178 Business and management in a global context
MN2177 Core management concepts
Two courses chosen from:
MN3028 Managerial economics
MN3075 Human resource management
MN3119 Strategy
MN3127 Organisation theory: an interdisciplinary approach
MN3141 Principles of marketing

Mathematics
One compulsory course and two compulsory half courses
MT2116 Abstract mathematics
MT2175 Further linear algebra (half course)
MT2176 Further calculus (half course)
One full course and two half courses OR four half courses chosen from:
MT3040 Game theory (half course)
MT3041 Advanced mathematical analysis (half course)
MT3042 Optimisation theory (half course)
MT3043 Mathematics of finance and valuation (half course)
MT3170 Discrete mathematics and algebra (full course)
ST3133 Advanced statistics: distribution theory (half course)
ST3134 Advanced statistics: statistical inference (half course)

Politics
Three courses chosen from:
PS1130 Introduction to modern political thought or
PS1172 Introduction to political science
PS2082 Comparative politics
PS3086 Democracy and democratisation
PS3088 Politics and policies of the European Union
PS3108 Political analysis and public choice
Plus
One 200 or 300 course (or two half courses) chosen from any Selection group, including any course not selected above.

Social Sciences
Four courses (or the equivalent) chosen from any of the Selection groups according to the following rules:
You must choose at least one 300 course
You may not choose more than one 100 course (or two half courses) from Selection groups F1 or F2
You may take no more than two courses from Selection group L.

Certificate of Higher Education in Social Sciences (CHESS)



Who are they for?

The Certificate of Higher Education in Social Sciences (CHESS) is a qualification in its own right that must be studied at an institution with permission to teach the programme. Please see 'Additional educational support' on pages 46–49 for further information.

This qualification is for you if you:

- have the ability, motivation and maturity to study at degree level, but do not have the qualifications usually required to enter a degree programme
- have the necessary qualifications to embark on a degree, but would prefer a course with more teaching support
- intend to take a degree programme, but would like to gain a recognised qualification after one year.

An entry route to degree study

If you do not have A levels or their equivalent, the CHESS provides an entry route to all of the degrees in the fields of Economics, Management, Finance and the Social Sciences listed in this prospectus.

If you intend to go on to a degree programme listed in this prospectus, choose your courses carefully and make sure that the courses you choose are available on the degree that interests you.

This will ensure that you receive credit for the courses you have passed. You can transfer to one of the degrees listed in this prospectus after attempting four courses and passing three full courses of the CHESS.

Features of the CHESS

- You take the same 100 courses as those offered to degree students.
- You must be registered with a teaching institution with permission to teach the programme. You cannot study independently for this qualification.
- You can complete the CHESS in a minimum of one year and a maximum of five.
- You sit your examinations in May/June.
- You must pass all four courses in order to be awarded the CHESS.

Are you eligible?

To be eligible for the CHESS you must:

- normally* be aged 18 or above by the 31 December in the year of registration **and**
- have four GCSE/O levels at grades A–C and one GCE/A level at grades A–E, **or** six GCSE/O levels at grades A–C, or equivalent **and**
- demonstrate competence in Mathematics at least equivalent to UK GCSE/GCE O level at Grade C or above **and**
- meet our English language requirement. We may require a test of proficiency in English **and**
- have been admitted to a full or part-time course of instruction at an institution which is recognised to teach the Certificate.

*Applications will be considered from applicants who do not meet the normal minimum age requirement for admission. Each application will be considered on an individual basis, and the decision taken at the discretion of the University of London.

In addition to the above, many institutions who are recognised to teach the programme have their own admission criteria. For further details (including fees, entrance requirements and application deadlines) or to apply, please contact your local institution directly.

A directory of institutions can be found at: londoninternational.ac.uk/online-search/institutions

For full details on how to meet our entrance requirements, including further information on our General Entrance Requirements, UK GCSE/GCE O level equivalents, UK GCE A level equivalents, and English language requirements you should visit: londoninternational.ac.uk/courses/search

Certificate of Higher Education in Social Sciences

Four full courses (or half course equivalents) to be chosen from the following:

AC1025	Principles of accounting
DV1171	Introduction to international development
EC1002	Introduction to economics ⁽¹⁾
FN1024	Principles of banking and finance
GY1009	Human geography
IR1011	Introduction to international relations
IR1034	World history since 1945
IS1060	Introduction to information systems
IS1168	Introduction to computer systems architecture and programming
MN1178	Business and management in a global context
MT105A	Mathematics 1 (half course)
MT105B	Mathematics 2 (half course) ⁽²⁾
MT1173	Algebra
MT1174	Calculus
PS1130	Introduction to modern political thought
PS1172	Introduction to political science
SC1179	Contemporary sociology in a global age
SC1185	Reading social science
ST104A	Statistics 1 (half course)
ST104B	Statistics 2 (half course) ⁽³⁾
LA1010	Criminal law♦
LA1020	Public law♦
LA1031	Legal system and method♦
LA1040	Contract law♦

Additional information

⁽¹⁾ EC1002 can only be taken at the same time or after MT105A and ST104A

⁽²⁾ MT105B can only be taken at the same time or after MT105A

⁽³⁾ ST104B can only be taken at the same time or after ST104A

♦ Students can take a maximum of two of these courses.

Students should note that their course selection will be subject to availability and not all courses will necessarily be available at their chosen teaching institutions.

Further information

- There are a number of universities in the UK, including LSE, that will consider you for entry into the second year of a degree if you pass the CHESS with very high marks and have taken the appropriate courses (see: lse.ac.uk/study/UOLIP/transfer_change.aspx). To be considered for a place, you will need to apply through UCAS, stating that you are applying for second-year entry.
- The CHESS is awarded with a grading of Distinction, Merit, Credit or Pass.
- You should expect your studies to take 35–40 hours per week.
- You must attend lectures and tutorials regularly and are expected to write assignments, and while these do not count towards your final assessment you are required to complete them before you can enter for the examinations.

Additional educational support



Student choice

We aim to give our students as much choice as possible about how, when and where they study. Some prefer the flexibility of being able to study independently, at their own pace, using our study materials. Others prefer the benefits of face-to-face teaching and classroom support, and choose to pay for additional educational support at a local independent institution.

We currently work with a growing network of 70-plus independent teaching institutions worldwide that provide tuition support for our students. We refer to these institutions as recognised centres and there are two categories:

- **Affiliate Centres** have demonstrated a sustained commitment to the quality of teaching, support and administration;
- **Registered Centres** have demonstrated acceptable standards for the purpose of supporting International Programmes students in preparing for examinations.

The CHES may be studied either full time or part time. Students must have registered through, and be studying at, a teaching institution that has been recognised for teaching this award by the University of London.

In the following list, institutions that are recognised for teaching the CHES are marked with an asterisk (*).

For details about recognised centres please visit: apps.londoninternational.ac.uk/online-search/institutions

The directory also provides details of those teaching institutions that have formally commenced the process for becoming recognised.

Argentina

AIE-Asociación Internacional de Estudios

Registered Centre

Buenos Aires

aiele.org

Bahrain

Bahrain Institute of Banking and Finance (BIBF)

Registered Centre

bibf.com

Egypt

Arab Academy for Science, Technology & Maritime Transport, College of Management and Technology*

Registered Centre

Heliopolis, Cairo and

Smart Village, Cairo

aast.edu/en/colleges/cmt_heliopolis/

Hong Kong SAR

HKU School of Professional and Continuing Education (HKU SPACE)*

Affiliate Centre

hkuspace.hku.hk

India

Indian School of Business and Finance*

Affiliate Centre

New Delhi

isbf.edu.in

Podar World College*

Registered Centre

Mumbai

podarworldcollege.org

Russell Square International College

Affiliate Centre

Mumbai

rsiccollege.org

Kazakhstan

Kazakh British Technical University (KBTU)/International School of Economics and Social Sciences (ISE)

Affiliate Centre

kbtu.kz; ise.kz

Malaysia

Crescendo International College

Registered Centre

crescendo.edu.my

HELP Academy SDN BHD

Affiliate Centre

Kuala Lumpur

help.edu.my

HELP College of Arts and Technology

Affiliate Centre

Kuala Lumpur

helpcat.edu.my

Seri Stamford College

Registered Centre

stamford.edu.my

Malta

St Martin's Institute of Higher Education*

Affiliate Centre

stmartins.edu

Pakistan

Bay View College*

Registered Centre

Karachi

bayviewhigh.edu.pk

L'Ecole for Advanced Studies*

Registered Centre

Karachi

lecole.edu.pk

Metropolitan International University College*

Affiliate Centre

Islamabad

miuc.com.pk

Roots College International DHA-Campus*

Affiliate Centre

Islamabad

rootsschool.edu.pk

The Millennium University College*

Affiliate Centre

Islamabad

tmuc.edu.pk

University College Lahore*

Affiliate Centre

Lahore

and

Multan

ucl.edu.pk

University College of Islamabad*

Registered Centre

Islamabad

uci.edu.pk

Russia

Financial University under Russian Federation Government

Registered Centre

Moscow

fa.ru/projects/london/Pages/default.aspx

Additional educational support

International College of Economics and Finance (ICEF)

Affiliate Centre

Moscow

icef.hse.ru

Seychelles

University of Seychelles

Registered Centre

unisey.ac.sc

Singapore

PSB Academy*

Registered Centre

psb-academy.edu.sg

SAA Global Education Centre*

Affiliate Centre

saage.edu.sg

SIM Global Education*

Affiliate Centre

simge.edu.sg

Stansfield College*

Registered Centre

stansfield.edu.sg

Stansfield Law School*

Registered Centre

stansfield.edu.sg

Sri Lanka

Horizon Campus

Registered Centre

horizoncampus.edu.lk

Royal Institute of Colombo*

Affiliate Centre

Colombo

ric.lk

Turkey

Istanbul Bilgi Universitesi*

Affiliate Centre

Istanbul

bilgi.edu.tr

Vietnam

British University Vietnam

Registered Centre

Hanoi

buv.edu.vn



Institution spotlight: SIM Global Education

simge.edu.sg

SIM Global Education (GE) is part of the University of London's global network of teaching institutions. It has been awarded the highest status of Affiliate Centre in recognition of its commitment to high-quality teaching and support to students.

It is one of the largest and leading private educational institutions in Singapore, known for its high standards and vibrant student experience. Its state-of-the-art campus has a global atmosphere, with local students mixing with students of other cultures and backgrounds.

In 2016 the University of London and SIM GE celebrated 30 years of successful partnership. From an initial intake of only 40 students in 1986, there are now 8,000 current students and over 31,400 graduates who have studied for University of London degrees at SIM GE.



Recognised Centres that have candidacy for the EMFSS suite of programmes

These are teaching institutions that are recognised to teach University of London International Programmes courses, but only have candidacy for the EMFSS suite of programmes.

Greece

Metropolitan College (AMC)

Athens

mitropolitiko.edu.gr/en

Malaysia

Advance Tertiary College

Kuala Lumpur
and

Penang

atc2u.edu.my

UK

CEG Digital

cegonline.london

Candidate institutions

These are teaching institutions that have formally commenced the process for becoming recognised.

Argentina

Universidad de Palermo

palermo.edu

Bolivia

Universidad Privada Boliviana

upb.edu/en

Chile

Universidad de Santiago de Chile

usach.cl

Greece

Metropolitan College, Athens

mitropolitiko.edu.gr



India

Great Lakes College

greatlakes.edu.in

Japan

Musashi University

musashi.ac.jp/english

Malaysia

Taylor's College

taylors.edu.my

Pakistan

LGS Defence

Peru

Universidad del Pacifico

up.edu.pe

Universidad San Ignacio de Loyola

usil.edu.pe

Russia

National Research University Higher School of Economics (HSE)

hse.ru

Serbia

The Faculty of Economics, University of Belgrade

bg.ac.rs

Spain

Universidad Camilo José Cela

ucjc.edu

Thailand

Regent's International College

regents.ac.th

UK

Global Banking School

globalbanking.ac.uk

Uruguay

Universidad de Montevideo

um.edu.uy

Selection groups

Level 100 courses

Selection group F1	
AC1025	Principles of accounting
DV1171	Introduction to international development
EC1002	Introduction to economics*
FN1024	Principles of banking and finance
GY1009	Human geography
IR1011	Introduction to international relations
IR1034	World history since 1945
IS1060	Introduction to information systems
IS1168	Introduction to computer systems architecture and programming
MN1178	Business and management in a global context
MT105A	Mathematics 1 (half course)
MT105B	Mathematics 2** (half course)
MT1173	Algebra
MT1174	Calculus
PS1130	Introduction to modern political thought
PS1172	Introduction to political science
SC1179	Contemporary sociology in a global age
SC1185	Reading social science
ST104A	Statistics 1 (half course)
ST104B	Statistics 2*** (half course)

* EC1002 Introduction to economics must be taken with or after ST104A Statistics 1 and MT105A Mathematics 1.

** MT105B Mathematics 2 must be taken with or after MT105A Mathematics 1.

*** ST104B Statistics 2 must be taken with or after ST104A Statistics 1.

Selection group F2	
LA1010	Criminal law
LA1020	Public law
LA1031	Legal system and method
LA1040	Contract law

Level 200 and 300 courses

Selection group A	
AC3091	Financial reporting
AC3097	Management accounting
AC3059	Financial management or
FN3092	Corporate finance
AC3093	Auditing and assurance
AC3143	Valuation and securities analysis
FN3142	Quantitative finance*

* FN3142 Quantitative finance must be taken with or after FN3092 Corporate finance.

Selection group B	
AC3091	Financial reporting
AC3093	Auditing and assurance
AC3143	Valuation and securities analysis
FN2029	Financial intermediation
FN3092	Corporate finance
FN3023	Investment management*
FN3142	Quantitative finance**

* FN3023 Investment management must be taken with or after FN3092 Corporate finance.

**FN3142 Quantitative finance must be taken with or after FN3092 Corporate finance.

Level 200 and 300 courses

Selection group D

DV2169	Economic policy analysis in international development
DV3162	Complex emergencies and humanitarian responses
DV3165	Development management
DV3166	Global environmental problems and politics
EC3044	Economics of development
GY2109	Geographies of development
SC3057	Social policy
SC3160	Population and society

Selection group E

EC2020	Elements of econometrics*
EC2065	Macroeconomics
EC2066	Microeconomics
EC2096	Economic history since 1900
EC3015	Economics of labour
EC3016	International economics
EC3022	Public economics
EC3044	Economics of development
EC3099	Industrial economics
EC3115	Monetary economics
EC3120	Mathematical economics
FN3092	Corporate finance
GY2164	Economic geography
IR3026	International political economy
MN3028	Managerial economics
MT3095	Further mathematics for economists

* EC2020 Elements of econometrics must be taken with or after ST104B Statistics 2 and MT105B Mathematics 2.

Selection group IR

DV3162	Complex emergencies and humanitarian responses
DV3165	Development management
DV3166	Global environmental problems and politics
IR2084	Nationalism and international relations
IR2085	International organisations
IR2137	Foreign policy analysis
IR3026	International political economy
IR3083	International political theory
IR3140	Security in international relations

Selection group IS

IS2062	Information systems development and management
IS2136	Information systems and organisations
IS2138	Information and communication technologies: principles and perspectives
IS3139	Software engineering: theory and application
IS3159	Research project in information systems
IS3167	Management and innovation of e-business

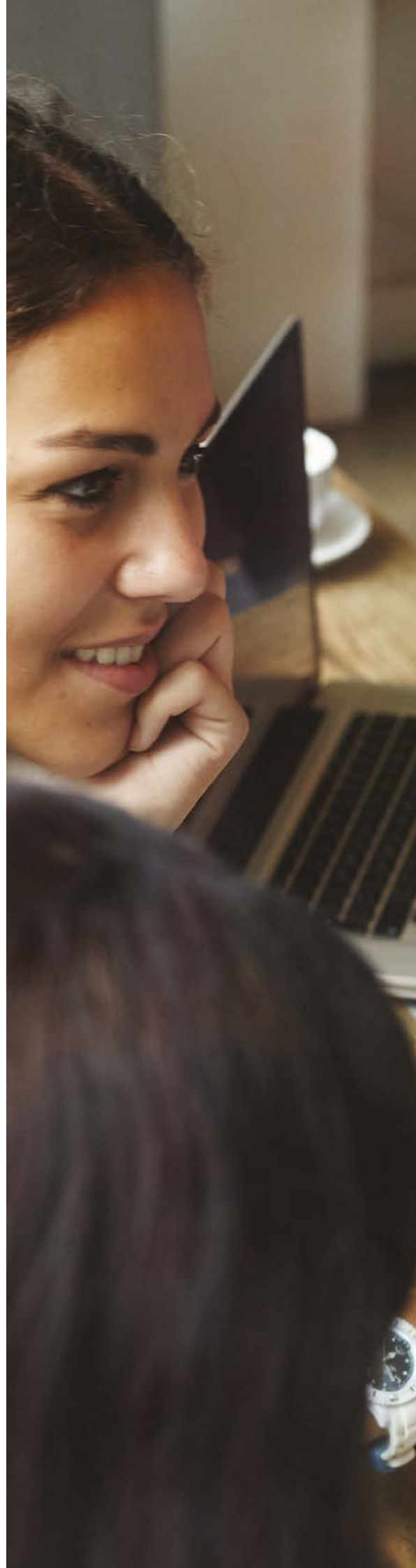
Selection group L

LA2001	Tort law
LA2002	Equity and trusts
LA2008	Administrative law
LA2017	Commercial law
LA2019	Family law
LA2024	EU law
LA2029	International protection of Human Rights
LA3003	Property law
LA3004	Civil and criminal procedure
LA3005	Jurisprudence and legal theory
LA3007	Evidence
LA3013	Public international law
LA3014	Conflict of laws
LA3018	Labour law
LA3021	Company law
LA3025	Criminology
LA3026	Intellectual property
LA3028	Introduction to Islamic law

Selection groups

Level 200 and 300 courses

Selection group M		Selection group N	
AC3097	Management accounting	MT2116	Abstract mathematics
AC3059 FN3092	Financial management or Corporate finance	MT2175	Further linear algebra (half course)
DV3165	Development management	MT2176	Further calculus (half course)
IS2136	Information systems and organisations	MT3040	Game theory (half course)
IS3167	Management and innovation of e-business	MT3041	Advanced mathematical analysis (half course)
MN3028	Managerial economics	MT3042	Optimisation theory (half course)
MN3032	Management science methods	MT3043	Mathematics of finance and valuation (half course)
MN2177	Core management concepts	MT3170	Discrete mathematics and algebra
MN3027	The law of business organisations	ST3133	Advanced statistics: distribution theory (half course)
MN3075	Human resource management	ST3134	Advanced statistics: statistical inference (half course)
MN3119	Strategy		
MN3127	Organisation theory: an interdisciplinary approach		
MN3141	Principles of marketing		
MT2076	Management mathematics		
SP2079	Elements of social and applied psychology		
		Selection group P	
		DV3162	Complex emergencies and humanitarian responses
		DV3165	Development management
		DV3166	Global environmental problems and politics
		PS2082	Comparative politics
		PS3086	Democracy and democratisation
		PS3088	Politics and policies of the European Union
		PS3108	Political analysis and public choice





Application and registration process

Getting started

You must apply online at:
londoninternational.ac.uk/courses/search

If you intend to study at an institution then you are advised to contact them before submitting your application.

Please read the 'Guidance Notes for Applications' before you complete your application.

Stage 1

Submit your online application form and application fee. Please note the application fee is non-refundable.

Stage 2

Submit your documentary evidence. This can be done online when submitting your application or at a later stage. Please see: londoninternational.ac.uk/applications-admissions/how-apply/documentary-evidence

Please do not send original documents.

Stage 3

We will contact you by **email** with one of the following:

Offer Letter: if you meet our entrance requirements and we have seen all required documentation then we will send you an Offer Letter.

Request for further information: we might require further documentation/information before we can confirm if you meet our entrance requirements.

We have referred your application to the Admissions Panel: if you do not automatically meet our entrance requirements then we will refer your application to the Admissions Panel for individual consideration. The Admissions Panel will consider qualifications which are not published under the Qualifications for Entrance Schedule, incomplete qualifications and

substantial relevant work experience. If we cannot accept you with your current qualifications and experience then we will advise you on what qualifications you could take in order to meet our entrance requirements in the future.

Stage 4

Complete the online registration. We explain how to do this in the Offer Letter.

Stage 5

Start your studies. Once you register you will be given access to VLE. We will also send you additional study materials to your correspondence address.

Hong Kong

Applicants living in Hong Kong can apply directly through:

The University of Hong Kong
School of Professional and Continuing Education (HKU SPACE)
University of London
International Programmes
Admissions Unit
3/F, Admiralty Centre
18 Harcourt Road
Hong Kong

Useful information for applicants

Submit your application even if you are waiting to sit an examination or to receive examination results. We can begin to process your application without all the evidence, although we will not be able to give you a final decision until all the necessary documentation has been received.

If you are unsure on whether or not you meet our entrance requirements then we might be able to advise you on this before you submit your online application. However, due to our increase in workload we are unable to provide this advice between 1 September and 30 October of each year.

Applications are valid for three years.

Transfer

It may be possible to transfer your course:

- between programmes listed in this prospectus
- to another programme we offer
- to another College within the University of London
- to another university in the UK or elsewhere.

To find out more visit: lse.ac.uk/study/UOLIP/transfer_change.aspx

Fees

Fees payable to the University

Academic year 2017–2018

Application fee (non-refundable)	£88
APL application fee (per course)	£93
APL application fee (per half course)	£47
Initial registration fee	£874
Continuing registration fee	£399
Examination fee per course	£264
Examination fee per half course	£132
Additional registration fee for students taking law courses (per course)	£53

Dates for 2017–2018 academic session

- The application handling fee is valid until the application closing date, 1 October 2017.
- The registration fee is valid until the registration closing date, 30 November 2017.
- The continuing registration fee is valid and payable between 1 March 2016 and 1 November 2017.
- The examination fees apply to students entering the 2018 examinations and are payable between 30 November 2017 and the examination entry deadline date, 1 February 2018.

Please note: fees are subject to annual review. The University reserves the right to amend previously announced fees, if necessary.

All fees must be paid in pounds sterling and can be paid online via the Student Portal using a credit/debit card (Visa, MasterCard), by Western Union Quick Pay, banker's draft/cheque or international money/postal order, made payable to 'The University of London'.

How much will my programme cost?

The full list of annual fees for the programmes will be published on the Student Fees web page once confirmed, please visit: londoninternational.ac.uk/fees

Fee examples

As a guide, if you were to complete the Standard Route of a degree in the minimum amount of time (three years), and without resits, you should expect to pay £5,238.

If you were to complete the Graduate Entry Route of a degree in the minimum amount of time (two years), and without resits, you should expect to pay £3,855.

If you complete a Graduate Diploma in the minimum amount of time (one year), and without resits, you should expect to pay £2,018.

For the Certificate of Higher Education in Social Sciences, you should contact a local institution with permission to teach the programme for full details of their fees. The fees payable to the University in 2017–2018 if you complete the certificate in one year are £1,930.

Other costs

In addition to the fees payable to the University, you should also budget for the cost of:

- purchasing textbooks
- any course or tuition you choose to undertake at a teaching institution
- the fee levied by your local examination centre to cover their costs.

Financial assistance

Undergraduate UK students may be able to apply for a part-time tuition fee loan to cover the cost of your registration and examination entry fees.

For full details on eligibility criteria please visit: gov.uk/student-finance Alternatively some employers in both the public and private sector may be willing to consider offering financial assistance to their employees.

Students with disabilities

The University of London International Programmes welcomes applications from disabled students and/or those who have specific access requirements.

If you are disabled and/or have specific access requirements, we will make every reasonable effort to meet your needs. This may include making special arrangements for examinations such as a separate room or special aids. If you would like to tell us about your disability and/or request special arrangements please complete the relevant section of the application form, or contact the Inclusive Practice Manager at: special.arrangements@london.ac.uk

Armed Forces

Students who are members or ex-members of the UK Armed Forces should note that the University of London has been approved by the Ministry of Defence in support of the Enhanced Learning Credits (ELC) Scheme (ELC Provider Reference Number 1284). The Scheme provides financial support to eligible Service personnel who wish to enhance their educational or vocational achievements. The ELC Administration Service website can be found at: www.enhancedlearningcredits.com

Further information

Contact

If you have any questions that are not answered by this prospectus please contact:

The Student Advice Centre, University of London
Senate House, Malet Street
London WC1E 7HU, United Kingdom
Tel: +44 (0)20 7862 8360
enquiries.londoninternational.ac.uk

Study programmes 2017–2018

We offer a wide range of study programmes, from full degree programmes to certificates and individual courses/modules. For further information visit **londoninternational.ac.uk/courses**



Inclusive Practice Policy

We are committed to a policy of inclusive practice and we seek to ensure that reasonable steps are taken to consider the needs of students with specific access requirements. This includes the areas of learning, assessment and examinations. If you need to make a request for special arrangements (such as additional time or special aids in exams) please contact the Inclusive Practice Manager at: special.arrangements@london.ac.uk

Complaints procedure

We aim to provide the highest quality service to our students. We endeavour to solve any problems you experience quickly and fairly. If, however, you wish to make a complaint our complaints procedure is published on our website and in our Student guide to the International Programmes and Programme handbooks.

While every effort has been made to ensure that the information contained in this prospectus is accurate at the date of publication (April 2017), all matters that it covers may be subject to change from time to time, both before and after a student has registered. In particular, information about the structure and content of programmes is subject to confirmation in the Programme regulations and registered students should refer to these. All fees are subject to annual review. The University does not intend by publication or distribution of this prospectus to create any contractual or other legal relation with applicants, registered students, their advisers or any other persons. You are strongly advised to check our website (londoninternational.ac.uk) for any revisions to this prospectus. We advise you to check local recognition criteria in your own country before applying for any qualification listed in this prospectus. This prospectus is issued free by the University of London.

**Published by University of London
International Programmes
(Design, Editorial and Production)**

Copyright © University of London, 2017

For further information on the range of programmes we offer, please visit our website or contact us at:

The Student Advice Centre
University of London
Senate House
Malet Street
London WC1E 7HU
United Kingdom

Telephone +44 (0)20 7862 8360
enquiries.londoninternational.ac.uk

This material is available in alternative formats upon request.
Please contact: special.arrangements@london.ac.uk

Follow us on:



[londoninternational.ac.uk/
youtube](https://www.youtube.com/londoninternational.ac.uk/)



[londoninternational.ac.uk/
facebook](https://www.facebook.com/londoninternational.ac.uk/)



[londoninternational.ac.uk/
twitter](https://twitter.com/londoninternational.ac.uk/)



[londoninternational.ac.uk/
instagram](https://www.instagram.com/londoninternational.ac.uk/)



[londoninternational.ac.uk/
linkedin](https://www.linkedin.com/company/londoninternational.ac.uk/)



[londoninternational.ac.uk/
googleplus](https://plus.google.com/londoninternational.ac.uk/)



[londoninternational.ac.uk/
flickr](https://www.flickr.com/photos/londoninternational.ac.uk/)



[londoninternational.ac.uk/
blog](https://londoninternational.ac.uk/blog/)

londoninternational.ac.uk/lse