

DHS Science and Technology Directorate

Identity and Access Management Technology Engine

Context

The Department of Homeland Security (DHS) Science and Technology Directorate (S&T) launched a series of high-profile, high-impact Apex programs to look strategically at the nation's security and address future challenges while supporting today's operational needs. Apex Engines were created to meet cross-cutting needs for all Apex programs.

Impact and Vision

The Apex Identity and Access Management Technology Engine (IDAM-E) will help the Homeland Security Enterprise (HSE) enable identity and access management solutions via stakeholder engagement, problem identification, projects, and research and development (R&D) investments.

Description and Approach

IDAM-E will bring expertise, technologies, tools, capabilities and approaches from government (U.S. & international) as well as external scientific, technical, industrial and academic sources to bear on identity, cyber and privacy problems identified by the Apex programs, IDAM-E, and DHS in general. When capabilities do not exist, build them via investments in research, prototypes, etc.

Key Activities

- Leverage expertise and relationships that span the public and private sector to bring identity, information security and privacy capabilities to meet Apex program and HSE needs.
- Provide test-bed infrastructure and test and evaluation expertise to prototype, evaluate and validate technologies.
- Make R&D investments to close technology gaps in areas of importance to the HSE.

Engine Service Offerings

Expertise

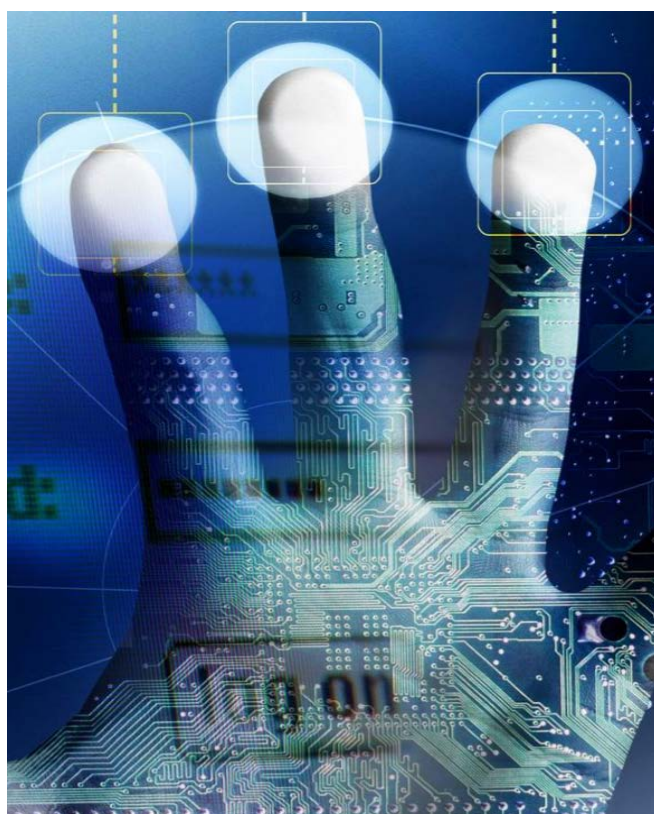
- Subject matter expertise
- Ideation workshops
- Analysis of alternatives
- Mapping technology to needs

Testbed Infrastructure

- Prototyping
- Proof of concepts
- Technology validation

Research & Development Investments

- To mature technology
- To provide open standards
- To provide multiple implementation choices
- To encourage private sector investment priorities



Engine Competency and R&D Focus Areas

1. Authentication of people and non-person entities
2. Risk based confirmation of identity that leads to trust
3. Data and application security at rest and in transit
4. Access control at the point of need
5. User experience that incorporates security, privacy and informed consent



**Homeland
Security**

Science and Technology

To learn more about IDAM Engine, contact
IDAM-E@hq.dhs.gov