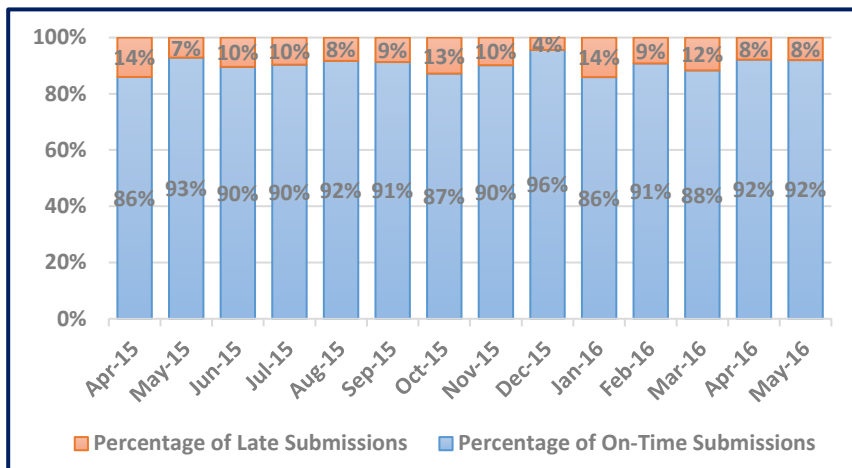


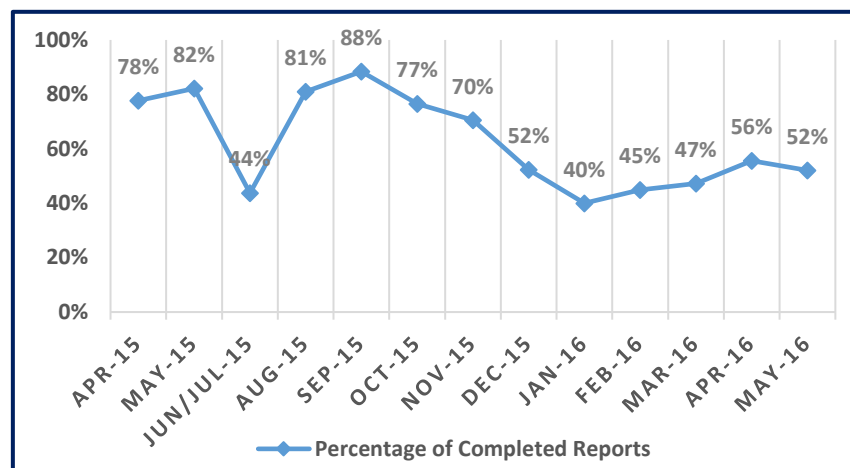
1. CSS Research Administration: Proposal Submissions *



Month	Number of Proposal Submissions	Percentage of On-Time Submissions	Percentage of Late Submissions
Apr-15	264	86%	14%
May-15	253	93%	7%
Jun-15	355	90%	10%
Jul-15	270	90%	10%
Aug-15	181	92%	8%
Sep-15	253	91%	9%
Oct-15	305	87%	13%
Nov-15	214	90%	10%
Dec-15	205	96%	4%
Jan-16	242	86%	14%
Feb-16	479	91%	9%
Mar-16	360	88%	12%
Apr-16	230	92%	8%
May-16	255	92%	8%

*Proposal data includes all Service Teams (Including Team 2)

2. CSS Research Administration: Percentage of PI Fund Expenditure Reports Completed and Delivered On-Time **



Month	Percentage of Completed Reports
Apr-15	78%
May-15	82%
Jun/Jul-15	44%
Aug-15	81%
Sep-15	88%
Oct-15	77%
Nov-15	70%
Dec-15	52%
Jan-16	40%
Feb-16	45%
Mar-16	47%
Apr-16	56%
May-16	52%

**Report data currently excludes Service Team 2

Note:

In December and January, financial reporting completion were impacted by the University's annual closure period and an unexpected BFS shutdown.

Notes

Month - Proposals

New data is typically available two weeks into the new month. For example, January data will not be available until mid February.

Month - Reports

New data is typically available at the end of the new month. For example, January data will not be available until late February.

Proposals

The data may change or be updated as a result of new information being captured on an ongoing basis.

On-Time/Late - Proposals

Measurement refers to VCR's Five Day Proposal Submission Policy. This is not an indicator of RA performance.

On-Time/Late - Reports

Measurement refers to CSS RA's Service Level target of PI Fund reporting 30 days after the month-end close.

Service Team

The dedicated staff assigned to support a specific set of units.