

# Rainer Gruessner



## Rainer Gruessner

Professor Department of  
Surgery  
University of Arizona  
USA

Tel: 520-626-4409

Fax: 520-626-9118

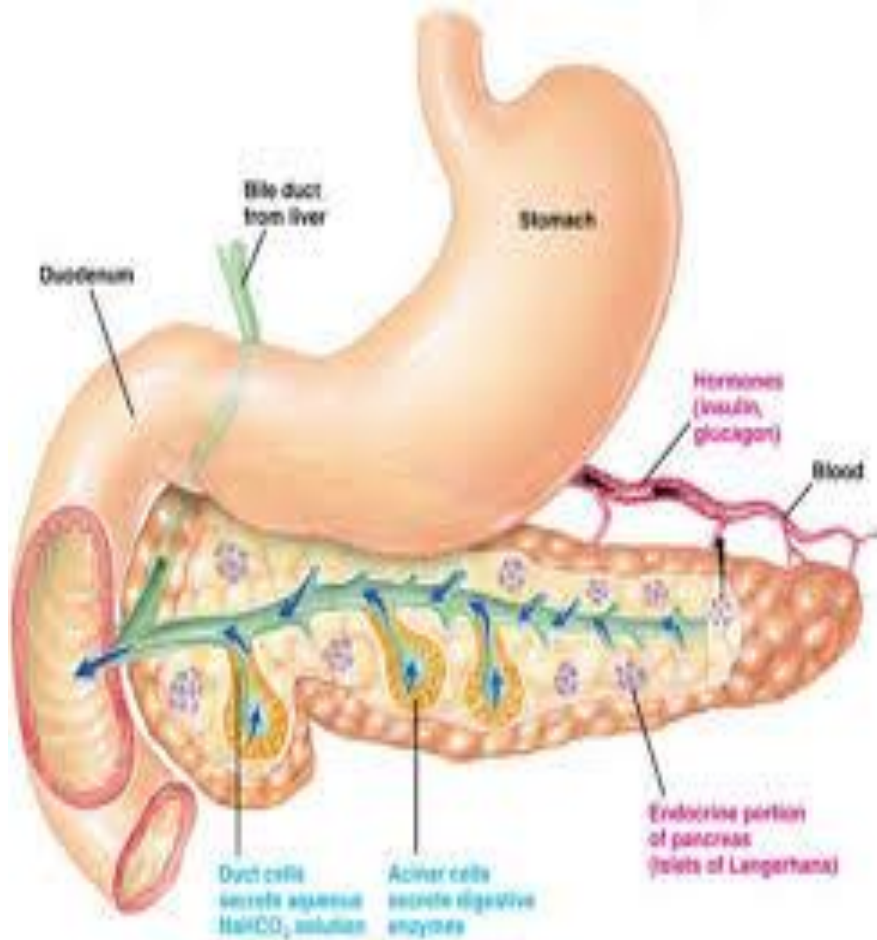
# University of Arizona



In 1885, establishing Arizona's first university in the middle of the Sonoran Desert was a bold move. But our founders were fearless, and we have never lost that spirit. To this day, we're revolutionizing the fields of space sciences, optics, biosciences, medicine, arts and humanities, business, technology transfer and many others. Since it was founded, the UA has grown to cover more than 380 acres in central Tucson, a rich breeding ground for discovery.

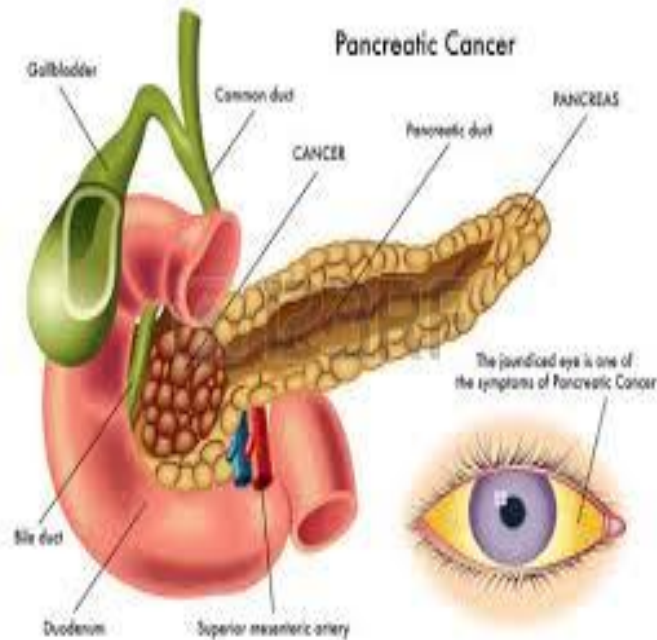
Where else in the world can you find an astronomical observatory mirror lab under a football stadium? An entire ecosystem under a glass dome? Visit our campus, just once, and you'll quickly understand why the UA is a university unlike any other.

# Chronic pancreatitis



Chronic pancreatitis is inflammation of the pancreas that does not heal or improve - it gets worse over time and leads to permanent damage. Chronic pancreatitis, like acute pancreatitis, occurs when digestive enzymes attack the pancreas and nearby tissues, causing episodes of pain.

# ISLETS OF LANGERHANS



There are about one million islets distributed throughout the pancreas of a healthy adult human, each of which measures about 0.2 mm in diameter. Each is separated from the surrounding pancreatic tissue by a thin fibrous connective tissue capsule which is continuous with the fibrous connective tissue that is interwoven throughout the rest of the pancreas. The combined mass of the islets is 1 to 1.5 grams.

# BIOGRAPHY

- Rainer Gruessner was Chairman, Department of Surgery. He was Director at HepatoPancreaticoBiliary Center and Chief, Division of General Surgery. He is Professor of Surgery and Immunology. His clinical speciality is Abdominal transplants, general surgery - including surgery for chronic pancreatitis, Surgical oncology - Liver, bile duct and pancreatic tumors.

# Research interests

Rainer Gruessner research interests are on surgical and transplant options for patients with end-stage liver, pancreas, kidney and intestinal failure from benign and malignant diseases, Pancreas, islet and kidney transplantation for the treatment of diabetes mellitus and its secondary complications, Chronic pancreatitis and islet transplants, Pancreas and liver cancer, Risk analysis and quality control of benign and malignant disorders of the pancreas, liver, and intestine, Tolerance induction using donor-specific cell augmentation.

THANK YOU