

# FUND YOUR FUTURE



Our office can assist students with financing an excellent education. We also encourage families from outside of California to search for external scholarships and plan accordingly.

- Begin your outside scholarship search as early as possible.
- Work-study is funding awarded on the basis of financial need that you may earn by working at a part-time job.
- Loans are funds that need to be repaid over a period of time, usually after you leave school and usually with interest.

## → RESIDENCY FOR TUITION PURPOSES

Students whose parents reside outside of California are highly unlikely to obtain California residency for tuition purposes at UC Berkeley. This applies to students who enter as freshmen and those who transfer from community colleges or other postsecondary institutions within California. Virtually all students from outside of California whose parents live outside of California will be assessed Nonresident Supplemental Tuition each semester for the duration of their undergraduate career at UC Berkeley. We encourage families to plan accordingly. For more information, see: [registrar.berkeley.edu](http://registrar.berkeley.edu)



## → SEARCHING FOR SCHOLARSHIPS

**External Scholarships** - UC Berkeley students are awarded more than \$10 million annually in external scholarships. The Financial Aid and Scholarships Office strongly encourages every student to find and apply for numerous external scholarships each year.

Thousands of external scholarships are awarded by schools, employers, private agencies, nonprofits, community, and professional organizations. Scholarship awards can be based on various factors, including academic achievement, artistic talent, intended career field, and volunteerism.

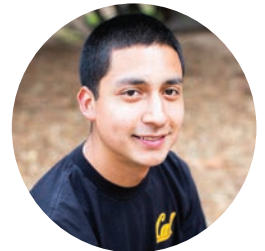
You should report all external scholarships online. Start your search for external scholarships early and keep track of deadlines! Start your search today: [financialaid.berkeley.edu/scholarship-search](http://financialaid.berkeley.edu/scholarship-search)

**California Alumni Association (CAA) Scholarships** - Alumni Scholarships awards nearly \$2 million annually to undergraduate students at UC Berkeley. We encourage all students to review CAA's scholarship eligibility criteria and apply to become an alumni scholar. For more information, contact CAA: [info@alumni.berkeley.edu](mailto:info@alumni.berkeley.edu)

### Financial Aid Eligibility

To receive financial aid, you are required to:

- Apply by completing a Free Application for Federal Student Aid (FAFSA). This will determine your financial need for federal grants, subsidized loans, work-study, and some external scholarships.
- Be a U.S. citizen or an eligible noncitizen.
- Be registered with Selective Service (if required).
- Be enrolled in courses and working toward a degree or certificate.
- Not owe a refund on a federal grant or be in default on a federal educational loan.



### Financial Aid Tips

- When applying for aid, include UC Berkeley school code 001312.
- Review your Student Aid Report (SAR) carefully to make sure the information you submitted is correct. If you need to make changes or corrections, update your application as soon as possible. Keep a printed confirmation of your submission.
- Submit requested documents by the deadlines specified online.

Visit [financialaid.berkeley.edu](http://financialaid.berkeley.edu) for more information and tips!

LIVING ARRANGEMENT	RESIDENCE HALL	ON CAMPUS APARTMENT	OFF CAMPUS APARTMENT	LIVING WITH RELATIVES
<i>Direct Costs Charged by UC Berkeley</i>				
Tuition and Fees	\$13,498	\$13,498	\$13,498	\$13,498
Room and Board	\$14,992*	\$12,049	–	–
Nonresidential Supplemental Tuition	\$26,682	\$26,682	\$26,682	\$26,682
<b>Total Direct Costs</b>	<b>\$55,172</b>	<b>\$52,229</b>	<b>\$40,180</b>	<b>\$40,180</b>
<i>Other Estimated Costs</i>				
Rent, Food, and Utilities	\$1,050	\$2,624	\$10,170	\$4,520
Books and Supplies, Personal, and Transportation	\$3,858	\$3,813	\$4,182	\$5,354
<b>Total Cost of Attendance</b>	<b>\$60,080*</b>	<b>\$58,666</b>	<b>\$54,532</b>	<b>\$50,054</b>

2016-17 estimated costs for undergraduate students. Optional health insurance add \$2,612.

\*Students living in Bowles Hall add \$4,364.

Actual tuition, fees, and charges are subject to change by the Regents of the University of California and could be affected by increases or reductions in state funding or other developments. Check [financialaid.berkeley.edu](http://financialaid.berkeley.edu) for updated figures.

## → HELPFUL WEBSITES

**[fafsa.ed.gov](http://fafsa.ed.gov)** - Apply for aid using the Free Application for Federal Student Aid (FAFSA).

**[fsaid.ed.gov](http://fsaid.ed.gov)** - Create Federal Student Aid I.D. to interact with U.S. Department of Education websites (including electronically signing your FAFSA).

**[calcentral.berkeley.edu](http://calcentral.berkeley.edu)** - Access and update your financial aid information, grant parent access, report external scholarships, and more.

**[financialaid.berkeley.edu](http://financialaid.berkeley.edu)** - Learn more about financial aid and use the “Cal-culator” for a personalized estimate of your cost of attendance and financial aid that might be available.

**[registrar.berkeley.edu](http://registrar.berkeley.edu)** - Learn more about the Statement of Legal Residence (SLR) and residency for tuition purposes.



## → CONTACT US

**Financial Aid and Scholarship Office**  
University of California, Berkeley  
[financialaid.berkeley.edu](http://financialaid.berkeley.edu)

**Cal Student Central**  
510-664-9181  
[studentcentral.berkeley.edu](http://studentcentral.berkeley.edu)



**Campus Safety:** Pursuant to the Federal Jeanne Clery Disclosure of Campus Security Policy and Campus Crime Statistics Act, UC Berkeley annually makes available to the public statistics on reported occurrences of criminal activity on and off campus at [safetycounts.berkeley.edu](http://safetycounts.berkeley.edu).

**Nondiscrimination Policy:** The University of California, in accordance with applicable Federal and State law and university policy, does not discriminate on the basis of race, color, national origin, religion, sex, gender identity, pregnancy, physical or mental disability, medical condition (cancer related or genetic characteristics), ancestry, marital status, age, sexual orientation, citizenship, or service in the uniformed services. The university also prohibits sexual harassment, including sexual violence. This nondiscrimination policy covers admission, access, and treatment in university programs and activities. For more information, visit The Office for the Prevention of Harassment & Discrimination at [ophd.berkeley.edu](http://ophd.berkeley.edu).