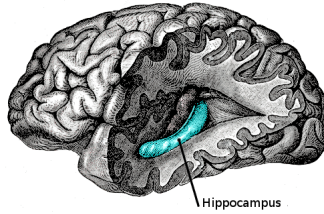


# Hippocampus

## Brain: Hippocampus



The hippocampus is located in the medial temporal lobe of the brain. In this lateral view of the human brain, the frontal lobe is at left, the occipital lobe at right, and the temporal and parietal lobes have largely been removed to reveal the hippocampus underneath.

<b>NeuroNames</b>	<i>hier-164</i> <sup>[1]</sup>
<b>MeSH</b>	<i>Hippocampus</i> <sup>[2]</sup>
<b>NeuroLex ID</b>	<i>birnlex_721</i> <sup>[3]</sup>

The **hippocampus** is a major component of the brains of humans and other mammals. It belongs to the limbic system and plays important roles in long-term memory and spatial navigation. Like the cerebral cortex, with which it is closely associated, it is a paired structure, with mirror-image halves in the left and right sides of the brain. In humans and other primates, the hippocampus is located inside the medial temporal lobe, beneath the cortical surface.

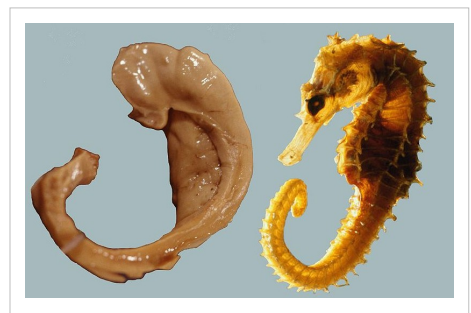
In Alzheimer's disease the hippocampus is one of the first regions of the brain to suffer damage; memory problems and disorientation appear among the first symptoms. Damage to the hippocampus can also result from oxygen starvation (hypoxia), encephalitis, or medial temporal lobe epilepsy. People with extensive hippocampal damage may experience amnesia—the inability to form or retain new memories.

In rodents, the hippocampus has been studied extensively as part of the brain system responsible for spatial memory and navigation. Many neurons in the rat and mouse hippocampus respond as place cells: that is, they fire bursts of action potentials when the animal passes through a specific part of its environment. Hippocampal place cells interact extensively with head direction cells, whose activity acts as an inertial compass, and with grid cells in the neighboring entorhinal cortex.

Since different neuronal cell types are neatly organized into layers in the hippocampus, it has frequently been used as a model system for studying neurophysiology. The form of neural plasticity known as long-term potentiation (LTP) was first discovered to occur in the hippocampus and has often been studied in this structure. LTP is widely believed to be one of the main neural mechanisms by which memory is stored in the brain.

## Name

The earliest description of the ridge running along the floor of the temporal horn of the lateral ventricle comes from the Venetian anatomist Julius Caesar Aranzi (1587), who initially likened it to a silkworm, and then a seahorse (Latin: *hippocampus*, from Greek: ἵππος, "horse" and Greek: κάμπος, "sea monster"). The German anatomist Duvernoy (1729), the first to illustrate the structure, also wavered between "seahorse" and "silkworm." "Ram's horn" was



proposed by the Danish anatomist Jacob Winsløw in 1732; and a decade later his fellow Parisian, the surgeon de Garengot, used "cornu Ammonis" - horn of (the ancient Egyptian god) Amun. Today, the structure is called the hippocampus.<sup>[4]</sup> De Garengot's "cornu Ammonis" survives in the names of the three main histological divisions of the hippocampus: CA1, CA2 and CA3. At right is the Hungarian neuroscientist László Seress' 1980 preparation of the human hippocampus and fornix compared with a seahorse.

## Functions

Historically, the earliest widely held hypothesis was that the hippocampus is involved in olfaction. This idea was largely motivated by a belief, later shown to be false, that the hippocampus receives direct input from the olfactory bulb.<sup>[5]</sup> There continues to be some interest in hippocampal olfactory responses, particularly the role of the hippocampus in memory for odors, but few people believe today that olfaction is its primary function.<sup>[6] [7]</sup>

Over the years, three main ideas of hippocampal function have dominated the literature: inhibition, memory, and space. The behavioral inhibition theory (caricatured by O'Keefe and Nadel as "slam on the brakes!")<sup>[8]</sup> was very popular up to the 1960s. It derived much of its justification from two observations: first, that animals with hippocampal damage tend to be hyperactive; second, that animals with hippocampal damage often have difficulty learning to inhibit responses that they have previously been taught. Jeffrey Gray developed this line of thought into a full-fledged theory of the role of the hippocampus in anxiety.<sup>[9]</sup> The inhibition theory is currently the least popular of the three.<sup>[10]</sup>

The second major line of thought relates the hippocampus to memory. Although it had historical precursors, this idea derived its main impetus from a famous report by Scoville and Brenda Milner<sup>[11]</sup> describing the results of surgical destruction of the hippocampus (in an attempt to relieve epileptic seizures), in a patient named Henry Gustav Molaison,<sup>[12]</sup> known until his death in 2008 as H.M. The unexpected outcome of the surgery was severe anterograde and partial retrograde amnesia: H.M. was unable to form new episodic memories after his surgery and could not remember any events that occurred just before his surgery, but retained memories for things that happened years earlier, such as his childhood. This case produced such enormous interest that H.M. reportedly became the most intensively studied medical subject in history.<sup>[13]</sup> In the ensuing years, other patients with similar levels of hippocampal damage and amnesia (caused by accident or disease) have been studied as well, and thousands of experiments have studied the physiology of activity-driven changes in synaptic connections in the hippocampus. There is now almost universal agreement that the hippocampus plays some sort of important role in memory; however, the precise nature of this role remains widely debated.<sup>[14] [15]</sup>

The third important theory of hippocampal function relates the hippocampus to space. The spatial theory was originally championed by O'Keefe and Nadel, who were influenced by E.C. Tolman's theories about "cognitive maps" in humans and animals. O'Keefe and his student Dostrovsky in 1971 discovered neurons in the rat hippocampus that appeared to them to show activity related to the rat's location within its environment.<sup>[16]</sup> Despite skepticism from other investigators, O'Keefe and his co-workers, especially Lynn Nadel, continued to investigate this question, in a line of work that eventually led to their very influential 1978 book *The Hippocampus as a Cognitive Map*.<sup>[17]</sup> As with the memory theory, there is now almost universal agreement that spatial coding plays an important role in hippocampal function, but the details are widely debated.<sup>[18]</sup>

## Role in memory

Psychologists and neuroscientists generally agree that the hippocampus has an important role in the formation of new memories about experienced events (episodic or autobiographical memory).<sup>[15] [19]</sup> Part of this role is hippocampal involvement in the detection of novel events, places and stimuli.<sup>[20]</sup> Some researchers view the hippocampus as part of a larger medial temporal lobe memory system responsible for general declarative memory (memories that can be explicitly verbalized—these would include, for example, memory for facts in addition to episodic memory).<sup>[14]</sup>

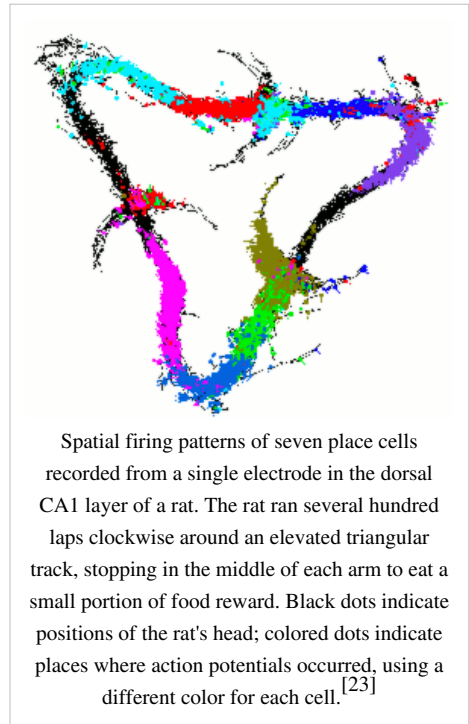
Severe damage to the hippocampus results in profound difficulties in forming new memories (anterograde amnesia), and often also affects memories formed before the damage (retrograde amnesia). Although the retrograde effect normally extends some years before the brain damage, in some cases older memories remain—this sparing of older memories leads to the idea that consolidation over time involves the transfer of memories out of the hippocampus to other parts of the brain.<sup>[21]</sup>

Damage to the hippocampus does not affect some types of memory, such as the ability to learn new motor or cognitive skills (playing a musical instrument, or solving certain types of puzzles, for example). This fact suggests that such abilities depend on different types of memory (procedural memory) and different brain regions. Furthermore, amnesic patients frequently show "implicit" memory for experiences even in the absence of conscious knowledge. For example, a patient asked to guess which of two faces they have seen most recently may give the correct answer the majority of the time, in spite of stating that they have never seen either of the faces before. Some researchers distinguish between conscious *recollection*, which depends on the hippocampus, and *familiarity*, which depends on portions of the medial temporal cortex.<sup>[22]</sup>

### Role in spatial memory and navigation

Studies conducted on freely moving rats and mice have shown that many hippocampal neurons have "place fields", that is, they fire bursts of action potentials when a rat passes through a particular part of the environment. Evidence for place cells in primates is limited, perhaps in part because it is difficult to record brain activity from freely moving monkeys. Place-related hippocampal neural activity has been reported in monkeys moving around inside a room while seated in a restraint chair,<sup>[24]</sup> on the other hand, Edmund Rolls and his colleagues instead described hippocampal cells that fire in relation to the place a monkey is looking at, rather than the place its body is located.<sup>[25]</sup> In humans, place cells have been reported in a study of patients with drug-resistant epilepsy who were undergoing an invasive procedure to localize the source of their seizures, with a view to surgical resection. The patients had diagnostic electrodes implanted in their hippocampus and then used a computer to move around in a virtual reality town.<sup>[26]</sup>

Place responses in rats and mice have been studied in hundreds of experiments over four decades, yielding a large quantity of information.<sup>[18]</sup> Place cell responses are shown by pyramidal cells in the hippocampus proper, and granule cells in the dentate gyrus. These constitute the great majority of neurons in the densely packed hippocampal layers. Inhibitory interneurons, which make up most of the remaining cell population, frequently show significant place-related variations in firing rate, but much weaker than that shown by pyramidal or granule cells. There is little if any spatial topography in the representation: cells lying next to each other in the hippocampus generally have uncorrelated spatial firing patterns. Place cells are typically almost silent when a rat is moving around outside the place field, but reach sustained rates as high as 40 Hz when the rat is near the center. Neural activity sampled from 30–40 randomly chosen place cells carries enough information to allow a rat's location to be reconstructed with high confidence. The size of place fields varies in a gradient along the length of the hippocampus, with cells at the dorsal end showing the smallest fields, cells near the center showing larger fields, and cells at the ventral tip fields that cover the entire environment.<sup>[18]</sup> In some cases, the firing rate of rat hippocampal cells depends not only on place but also on the direction a rat is moving, the destination toward which it is traveling, or other task-related variables.<sup>[27]</sup>



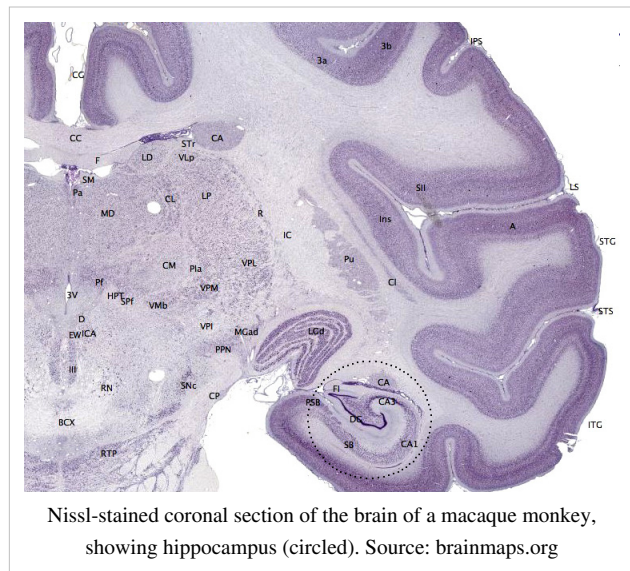
The discovery of place cells in the 1970s led to a theory that the hippocampus might act as a cognitive map—a neural representation of the layout of the environment.<sup>[28]</sup> Several lines of evidence support the hypothesis. It is a frequent observation that without a fully functional hippocampus, humans may not remember where they have been and how to get where they are going: getting lost is one of the most common symptoms of amnesia.<sup>[29]</sup> Studies with animals have shown that an intact hippocampus is required for some spatial memory tasks, particularly ones that require finding the way to a hidden goal.<sup>[30]</sup> The "cognitive map hypothesis" has been further advanced by recent discoveries of head direction cells, grid cells, and border cells in several parts of the rodent brain that are strongly connected to the hippocampus.<sup>[18] [31]</sup>

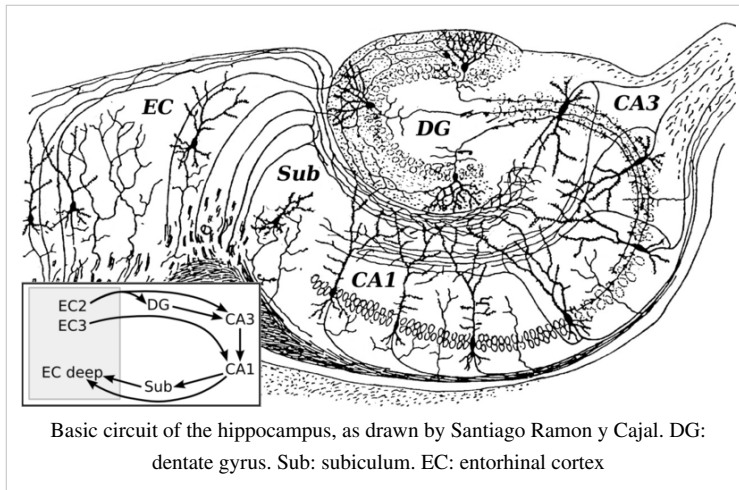
Brain imaging shows that people have more active hippocampi when correctly navigating, as tested in a computer-simulated "virtual" navigation task.<sup>[32]</sup> Also, there is evidence that the hippocampus plays a role in finding shortcuts and new routes between familiar places. For example, London's taxi drivers must learn a large number of places and the most direct routes between them (they have to pass a strict test, The Knowledge, before being licensed to drive the famous black cabs). A study at University College London by Maguire, *et al.* (2000)<sup>[33]</sup> showed that part of the hippocampus is larger in taxi drivers than in the general public, and that more experienced drivers have bigger hippocampi. Whether having a bigger hippocampus helps an individual to become a cab driver, or if finding shortcuts for a living makes an individual's hippocampus grow is yet to be elucidated. However, in that study Maguire, *et al.* examined the correlation between size of the grey matter and length of time that had been spent as a taxi driver, and found a positive correlation between the length of time an individual had spent as a taxi driver and the volume of the right hippocampus. It was found that the total volume of the hippocampus remained constant, from the control group vs. taxi drivers. That is to say that the posterior portion of a taxi driver's hippocampus is indeed increased, but at the expense of the anterior portion. There have been no known detrimental effects reported from this disparity in hippocampal proportions.<sup>[33]</sup>

## Anatomy

Anatomically, the hippocampus is an elaboration of the edge of the cerebral cortex.<sup>[34]</sup> It can be distinguished as a zone where the cortex narrows into a single layer of very densely packed neurons, which curls into a tight S shape. The structures that line the edge of the cortex make up the so-called limbic system (Latin *limbus* = *border*): these include the hippocampus, cingulate cortex, olfactory cortex, and amygdala. Paul MacLean once suggested, as part of his triune brain theory, that the limbic structures comprise the neural basis of emotion. Most neuroscientists no longer believe that the concept of a unified "limbic system" is valid, though.<sup>[35]</sup>

The hippocampus as a whole has the shape of a curved tube, which has been analogized variously to a seahorse, a ram's horn (*Cornu Ammonis*, hence the subdivisions CA1 through CA4), or a banana.<sup>[34]</sup> It consists of ventral and dorsal portions, both of which share similar composition but are parts of different neural circuits.<sup>[36]</sup> This general layout holds across the full range of mammalian species, from hedgehog to human, although the details vary. In the rat, the two hippocampi resemble a pair of bananas, joined at the stems. In human or monkey brains, the portion of the hippocampus down at the bottom, near the base of the temporal lobe, is much broader than the part at the top. One of the consequences of this complex geometry is that cross-sections through the hippocampus can show a variety of shapes, depending on the angle and location of the cut.





The entorhinal cortex (EC), the greatest source of hippocampal input and target of hippocampal output, is strongly and reciprocally connected with many other parts of the cerebral cortex, and thereby serves as the main "interface" between the hippocampus and other parts of the brain. The superficial layers of the EC provide the most prominent input to the hippocampus, and the deep layers of the EC receive the most prominent output. Within the hippocampus, the flow of information is largely unidirectional, with signals

propagating through a series of tightly packed cell layers, first to the dentate gyrus, then to the CA3 layer, then to the CA1 layer, then to the subiculum, then out of the hippocampus to the EC. Each of these layers also contains complex intrinsic circuitry and extensive longitudinal connections.<sup>[34]</sup>

Several other less salient connections play important roles in hippocampal function.<sup>[34]</sup> Beyond the output to the EC, additional output pathways go to other cortical areas including the prefrontal cortex, and another large output goes to the lateral septal area. The hippocampus receives modulatory input from the serotonin, norepinephrine, and dopamine systems, and from nucleus reuniens of the thalamus. A very important projection comes from the medial septal area, which sends cholinergic and GABAergic fibers to all parts of the hippocampus. The inputs from the septal area play a key role in controlling the physiological state of the hippocampus: destruction of the septal area abolishes the hippocampal theta rhythm, and severely impairs certain types of memory.<sup>[37]</sup>

The cortical region adjacent to the hippocampus is known collectively as the parahippocampal gyrus (or parahippocampus).<sup>[38]</sup> It includes the EC and also the perirhinal cortex, which derives its name from the fact that it lies next to the rhinal sulcus. The perirhinal cortex plays an important role in visual recognition of complex objects, but there is also substantial evidence that it makes a contribution to memory which can be distinguished from the contribution of the hippocampus, and that complete amnesia occurs only when both the hippocampus and the parahippocampus are damaged.<sup>[38]</sup>

## Physiology

The hippocampus shows two major "modes" of activity, each associated with a distinct pattern of neural population activity and waves of electrical activity as measured by an electroencephalogram (EEG). These modes are named after the EEG patterns associated with them: theta and large irregular activity (LIA). The main characteristics described below are for the rat, which is the animal most extensively studied.<sup>[39]</sup>

The theta mode appears during states of active, alert behavior (especially locomotion), and also during REM (dreaming) sleep.<sup>[40]</sup> In the theta mode, the EEG is dominated by large regular waves with a frequency range of 6–9 Hz, and the main groups of hippocampal neurons (pyramidal cells and granule cells) show sparse population activity, which means that in any short time interval, the great majority of cells are silent, while the small remaining fraction fire at relatively high rates, up to 50 spikes in one second for the most active of them. An active cell typically stays active

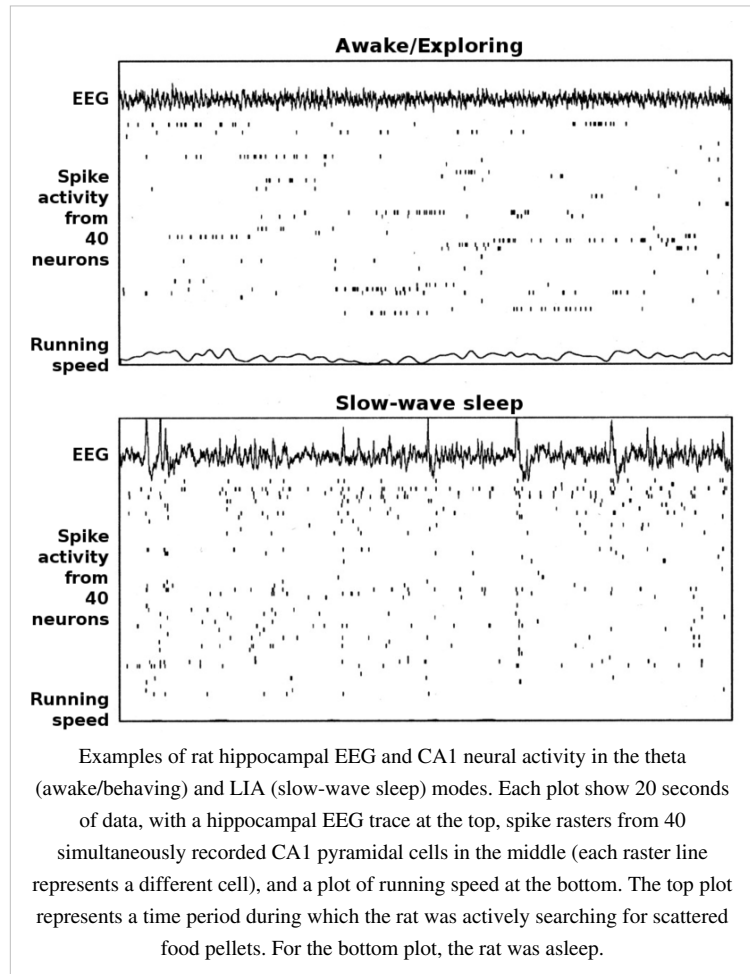
for half a second to a few seconds. As the rat behaves, the active cells fall silent and new cells become active, but the overall percentage of active cells remains more or less constant. In many situations, cell activity is determined largely by the spatial location of the animal, but other behavioral variables also clearly influence it.

The LIA mode appears during slow-wave (non-dreaming) sleep, and also during states of waking immobility, such as resting or eating.<sup>[40]</sup> In the LIA mode, the EEG is dominated by sharp waves, which are randomly timed large deflections of the EEG signal lasting for 200–300 ms. These sharp waves also determine the population neural activity patterns. Between them, pyramidal cells and granule cells are very quiet (but not silent). During a sharp wave, as many as 5–10% of the neural population may emit action potentials during a period of 50 ms; many of these cells emit bursts of several action potentials.

These two hippocampal activity modes can be seen in primates as well as rats, with the exception that it has been difficult to see robust theta rhythmicity in the primate hippocampus. There are, however, qualitatively similar sharp waves, and similar state-dependent changes in neural population activity.<sup>[41]</sup>

### Theta rhythm

Because of its densely packed neural layers, the hippocampus generates some of the largest EEG signals of any brain structure. In some situations the EEG is dominated by regular waves at 3–10 Hz, often continuing for many seconds. These reflect subthreshold membrane potentials and strongly modulate the spiking of hippocampal neurons and synchronise across the hippocampus in a travelling wave pattern.<sup>[42]</sup> This EEG pattern is known as a theta rhythm.<sup>[43]</sup> Theta rhythmicity is very obvious in rabbits and rodents, and also clearly present in cats and dogs.



Whether theta can be seen in primates is a vexing question.<sup>[44]</sup> In rats (the animals that have been the most extensively studied), theta is seen mainly in two conditions: first, when an animal is walking or in some other way actively interacting with its surroundings; second, during REM sleep.<sup>[45]</sup> The function of theta has not yet been convincingly explained, although numerous theories have been proposed.<sup>[39]</sup> The most popular hypothesis has been to relate it to learning and memory. For example, the phase with which theta at the time of stimulation of a neuron shapes the effect of that stimulation upon its synapses and therefore may affect learning and memory dependent upon synaptic plasticity.<sup>[46]</sup> It is well-established that lesions of the medial septum—the central node of the theta system—cause severe disruptions of memory. However, the medial septum is more than just the controller of theta, it is also the main source of cholinergic projections to the hippocampus.<sup>[34]</sup> It has not been established that septal lesions exert their effects specifically by eliminating the theta rhythm.<sup>[47]</sup>

## Sharp waves

During sleep, or during waking states when an animal is resting or otherwise not engaged with its surroundings, the hippocampal EEG shows a pattern of irregular slow waves, somewhat larger in amplitude than theta waves. This pattern is occasionally interrupted by large surges called *sharp waves*.<sup>[48]</sup> These events are associated with bursts of spike activity, lasting 50–100 msec, in pyramidal cells of CA3 and CA1. They are also associated with short-lasting high-frequency EEG oscillations called "ripples", with frequencies in the range 150–200 Hz in rats. Sharp waves are most frequent during sleep, when they occur at an average rate around 1 per second (in rats), but in a very irregular temporal pattern. Sharp waves are less frequent during inactive waking states, and are usually smaller. Sharp waves have also been observed in humans and monkeys. In macaques, sharp waves are robust, but do not occur as frequently as in rats.<sup>[41]</sup>

One of the most interesting aspects of sharp waves is that they appear to be associated with memory. Wilson and McNaughton 1994,<sup>[49]</sup> and numerous later studies, reported that when hippocampal place cells have overlapping spatial firing fields (and therefore often fire in near-simultaneity), they tend to show correlated activity during sleep following the behavioral session. This enhancement of correlation, commonly known as *reactivation*, has been found to occur mainly during sharp waves.<sup>[50]</sup> It has been proposed that sharp waves are, in fact, reactivations of neural activity patterns that were memorized during behavior, driven by strengthening of synaptic connections within the hippocampus.<sup>[51]</sup> This idea forms a key component of the "two-stage memory" theory, advocated by Buzsáki and others, which proposes that memories are stored within the hippocampus during behavior, and then later transferred to the neocortex during sleep: sharp waves are suggested to drive Hebbian synaptic changes in the neocortical targets of hippocampal output pathways.<sup>[52]</sup>

## Long-term potentiation

Since at least the time of Ramon y Cajal, psychologists have speculated that the brain stores memory by altering the strength of connections between neurons that are simultaneously active.<sup>[53]</sup> This idea was formalized by Donald Hebb in 1948,<sup>[54]</sup> but for many years thereafter, attempts to find a brain mechanism for such changes came up empty. In 1973, Tim Bliss and Terje Lømo described a phenomenon in the rabbit hippocampus that appeared to meet Hebb's specifications: a change in synaptic responsiveness induced by brief strong activation and lasting for hours, days, or longer.<sup>[55]</sup> This phenomenon was soon referred to as *long-term potentiation*, abbreviated *LTP*. As a candidate mechanism for memory, LTP has been studied intensively over the following years, and a great deal has been learned about it.

The hippocampus is a particularly favorable site for studying LTP because of its densely packed and sharply defined layers of neurons, but similar types of activity-dependent synaptic change have now been observed in many other brain areas.<sup>[56]</sup> The best-studied form of LTP occurs at synapses that terminate on dendritic spines and use the transmitter glutamate. Several of the major pathways within the hippocampus fit this description, and show LTP.<sup>[57]</sup> The synaptic changes depend on a special type of glutamate receptor, the NMDA receptor, which has the special



property of allowing calcium to enter the postsynaptic spine only when presynaptic activation and postsynaptic depolarization occur at the same time.<sup>[58]</sup> Drugs that interfere with NMDA receptors block LTP and also have major effects on some types of memory, especially spatial memory. Transgenic mice, genetically modified in ways that disable the LTP mechanism, also generally show severe memory deficits.<sup>[58]</sup>

## Pathology

### Aging

Age-related conditions such as Alzheimer's disease (for which hippocampal disruption is one of the earliest signs<sup>[59]</sup>) have a severe impact on many types of cognition, but even normal, healthy aging is associated with a gradual decline in some types of memory, including episodic memory and working memory. Because the hippocampus is thought to play a central role in memory, there has been considerable interest in the possibility that age-related declines could be caused by hippocampal deterioration.<sup>[60]</sup> Some early studies reported substantial loss of neurons in the hippocampus of elderly people, but later studies using more precise techniques found only minimal differences.<sup>[60]</sup> Similarly, some MRI studies have reported shrinkage of the hippocampus in elderly people, but other studies have failed to reproduce this finding. There is, however, a reliable relationship between the size of the hippocampus and memory performance—meaning that not all elderly people show hippocampal shrinkage, but those who do tend to perform less well on some memory tasks.<sup>[61]</sup> There are also reports that memory tasks tend to produce less hippocampal activation in elderly than in young subjects.<sup>[61]</sup>

In rats, where detailed studies of cellular physiology are possible, aging does not cause substantial cell loss in the hippocampus, but it alters synaptic connectivity in several ways.<sup>[62]</sup> Functional synapses are lost in the dentate gyrus and CA1 region, and NMDA receptor-mediated responses are reduced. These changes may account for deficits in induction and maintenance of long-term potentiation, a form of synaptic plasticity that has been implicated in memory. There are also age-related declines in hippocampal expression of several genes associated with synaptic plasticity.<sup>[63]</sup> Finally, there are differences in the stability of "place cell" representations. In young rats, the arrangement of place fields is usually altered if the rat is moved into a different environment, but remains the same if a rat is returned to an environment it has visited previously. In aged rats, the place fields frequently fail to "re-map" when a rat is moved to a different environment, and also frequently fail to restore the original "map" when the rat is returned to the same environment.

### Stress

The hippocampus contains high levels of glucocorticoid receptors, which make it more vulnerable to long-term stress than most other brain areas.<sup>[64]</sup> Stress-related steroids affect the hippocampus in at least three ways: first, by reducing the excitability of some hippocampal neurons; second, by inhibiting the genesis of new neurons in the dentate gyrus; third, by causing atrophy of dendrites in pyramidal cells of the CA3 region. There is evidence that humans who have experienced severe, long-lasting traumatic stress (for example, Holocaust survivors) show atrophy of the hippocampus, more than of other parts of the brain. These effects show up in post-traumatic stress disorder, and they may contribute to the hippocampal atrophy reported in schizophrenia and severe depression. A recent study has also revealed atrophy as a result of depression, but this can be stopped with anti-depressants, even if they are not effective in relieving other symptoms.<sup>[65]</sup> Hippocampal atrophy is also frequently seen in Cushing's syndrome, a disorder caused by high levels of cortisol in the bloodstream. At least some of these effects appear to be reversible if the stress is discontinued. There is, however, evidence mainly derived from studies using rats that stress shortly after birth can affect hippocampal function in ways that persist throughout life.<sup>[66]</sup>



## Epilepsy

The hippocampus is often the focus of epileptic seizures: hippocampal sclerosis is the most commonly visible type of tissue damage in temporal lobe epilepsy.<sup>[67]</sup> It is not yet clear, though, whether the epilepsy is usually caused by hippocampal abnormalities, or the hippocampus is damaged by cumulative effects of seizures.<sup>[68]</sup> In experimental settings where repetitive seizures are artificially induced in animals, hippocampal damage is a frequent result: this may be a consequence of the hippocampus being one of the most electrically excitable parts of the brain. It may also have something to do with the fact that the hippocampus is one of very few brain regions where new neurons continue to be created throughout life.<sup>[69]</sup>

## Schizophrenia

The causes of schizophrenia are not at all well understood, but numerous abnormalities of brain structure have been reported. The most thoroughly investigated alterations involve the cerebral cortex, but effects on the hippocampus have also been described. Many reports have found reductions in the size of the hippocampus in schizophrenic subjects.<sup>[70]</sup> The changes probably result from altered development rather than tissue damage, and show up even in subjects who have never been medicated. Several lines of evidence implicate changes in synaptic organization and connectivity.<sup>[70]</sup> It is unclear whether hippocampal alterations play any role in causing the psychotic symptoms that are the most important feature of schizophrenia. Anthony Grace and his co-workers have suggested, on the basis of experimental work using animals, that hippocampal dysfunction might produce an alteration of dopamine release in the basal ganglia, thereby indirectly affecting the integration of information in the prefrontal cortex.<sup>[71]</sup> Others have suggested that hippocampal dysfunction might account for disturbances in long term memory frequently observed in people with schizophrenia.<sup>[72]</sup>

## Evolution

The hippocampus has a generally similar appearance across the range of mammal species, from monotremes such as the echidna to primates such as humans.<sup>[73]</sup> The hippocampal-size-to-body-size ratio broadly increases, being about twice as large for primates as for the echidna. It does not, however, increase at anywhere close to the rate of the neocortex-to-body-size ratio. Therefore, the hippocampus takes up a much larger fraction of the cortical mantle in rodents than in primates. In adult humans, the volume of the hippocampus on each side of the brain is about 3–3.5 cm<sup>3</sup>, as compared to 320–420 cm<sup>3</sup> for the volume of the neocortex.<sup>[74]</sup>

There is also a general relationship between the size of the hippocampus and spatial memory. When comparisons are made between similar species, those that have a greater capacity for spatial memory tend to have larger hippocampal volumes.<sup>[75]</sup> This relationship also extends to sex differences: in species where males and females show strong differences in spatial memory ability, they also tend to show corresponding differences in hippocampal volume.<sup>[76]</sup>

Non-mammalian species do not have a brain structure that looks like the mammalian hippocampus, but they have one that is considered homologous to it. The hippocampus, as pointed out above, is essentially the medial edge of the cortex. Only mammals have a fully developed cortex, but the structure it evolved from, called the pallium, is present in all vertebrates, even the most primitive ones such as the lamprey or hagfish.<sup>[77]</sup> The pallium is usually divided into three zones: medial, lateral, and dorsal. The medial pallium forms the precursor of the hippocampus. It does not resemble the hippocampus visually, because the layers are not warped into an S shape or enwrapped by the dentate gyrus, but the homology is indicated by strong chemical and functional affinities. There is now evidence that these hippocampal-like structures are involved in spatial cognition in birds, reptiles, and fish.<sup>[78]</sup>

In birds, the correspondence is sufficiently well established that most anatomists refer to the medial pallial zone as the "avian hippocampus".<sup>[79]</sup> Numerous species of birds have strong spatial skills, particularly those that cache food. There is evidence that food-caching birds have a larger hippocampus than other types of birds, and that damage to the hippocampus causes impairments in spatial memory.<sup>[80]</sup>

The story for fish is more complex. In teleost fish (which make up the great majority of existing species), the forebrain is distorted in comparison to other types of vertebrates: most neuroanatomists believe that the teleost forebrain is essentially everted, like a sock turned inside-out, so that structures that lie in the interior, next to the ventricles, for most vertebrates, are found on the outside in teleost fish, and vice versa.<sup>[81]</sup> One of the consequences of this is that the medial pallium ("hippocampal" zone) of a typical vertebrate is thought to correspond to the lateral pallium of a typical fish. Several types of fish (particularly goldfish) have been shown experimentally to have strong spatial memory abilities, even forming "cognitive maps" of the areas they inhabit.<sup>[75]</sup> There is evidence that damage to the lateral pallium impairs spatial memory.<sup>[82] [83]</sup>

Thus, the role of the hippocampal region in navigation appears to begin far back in vertebrate evolution, predating splits that occurred hundreds of millions of years ago.<sup>[84]</sup> It is not yet known whether the medial pallium plays a similar role in even more primitive vertebrates, such as sharks and rays, or even lampreys and hagfish. Some types of insects, and molluscs such as the octopus, also have strong spatial learning and navigation abilities, but these appear to work differently from the mammalian spatial system, so there is as yet no good reason to think that they have a common evolutionary origin; nor is there sufficient similarity in brain structure to enable anything resembling a "hippocampus" to be identified in these species. Some have proposed, though, that the insect's mushroom bodies may have a function similar to that of the hippocampus.<sup>[85]</sup>

## References

- Aboitiz, F; Morales D, Montiel J (2003). "The evolutionary origin of the mammalian isocortex: Towards an integrated developmental and functional approach". *Behav. Brain Sciences* **26** (5): 535–52. doi:10.1017/S0140525X03000128. PMID ref15179935.
- Amaral, D; Lavenex P (2006). "Ch 3. Hippocampal Neuroanatomy". in Andersen P, Morris R, Amaral D, Bliss T, O'Keefe J. *The Hippocampus Book*. Oxford University Press. ISBN 9780195100273.
- Best PJ, White AM (1999). "Placing hippocampal single-unit studies in a historical context". *Hippocampus* **9** (4): 346–51. doi:10.1002/(SICI)1098-1063(1999)9:4<346::AID-HIPO2>3.0.CO;2-3. PMID 10495017.
- Bliss T, Lømo T (1973). "Long-lasting potentiation of synaptic transmission in the dentate area of the anaesthetized rabbit following stimulation of the perforant path"<sup>[86]</sup>. *J Physiol* **232** (2): 331–56. PMID 4727084. PMC 1350458.
- Boyer P, Phillips JL, Rousseau FL, Ilivitsky S (2007). "Hippocampal abnormalities and memory deficits: new evidence of a strong pathophysiological link in schizophrenia". *Brain Res Rev* **54** (1): 92–112. doi:10.1016/j.brainresrev.2006.12.008. PMID 17306884.
- Broglio, C; Gómez A, Durán E, Ocaña FM, Jiménez-Moya F, Rodríguez F, Salas C (2002). "Hallmarks of a common forebrain vertebrate plan: Specialized pallial areas for spatial, temporal and emotional memory in actinopterygian fish". *Brain Res. Bull.* **57** (4-6): 397–99. doi:10.1016/j.brainresbull.2005.03.021. PMID 16144602.
- Burke SN, Barnes CA (2006). "Neural plasticity in the ageing brain". *Nat Rev Neurosci* **7** (1): 30–40. doi:10.1038/nrn1809. PMID 16371948.
- Buzsáki G (1986). "Hippocampal sharp waves: their origin and significance". *Brain Res.* **398** (2): 242–52. doi:10.1016/0006-8993(86)91483-6. PMID 3026567.
- Buzsáki G (1989). "Two-stage model of memory trace formation: a role for "noisy" brain states"<sup>[87]</sup>. *Neuroscience* **31** (3): 551–70. doi:10.1016/0306-4522(89)90423-5. PMID 2687720.
- Buzsáki G, Chen LS, Gage FH (1990). "Spatial organization of physiological activity in the hippocampal region: relevance to memory formation". *Prog Brain Res* **83**: 257–68. doi:10.1016/S0079-6123(08)61255-8. PMID 2203100.
- Buzsáki, G (2002). "Theta oscillations in the hippocampus"<sup>[88]</sup> (PDF). *Neuron* **33** (3): 325–40. doi:10.1016/S0896-6273(02)00586-X. PMID 11832222.
- Buzsáki, G (2006). *Rhythms of the Brain*. Oxford University Press. ISBN 0195301064.

- Ramón y Cajal S (1894). "The Croonian Lecture: La Fine Structure des Centres Nerveux". *Proc Roy Soc London* **55**: 444–68. doi:10.1098/rspl.1894.0063.
- Campbell S, Macqueen G (2004). "The role of the hippocampus in the pathophysiology of major depression" <sup>[89]</sup>. *J Psychiatry Neurosci* **29** (6): 417–26. PMID 15644983. PMC 524959.
- Cantero, JL; Atienza M, Stickgold R, Kahana MJ, Madsen JR, Kocsis B (November 26, 2003). "Sleep-dependent theta oscillations in the human hippocampus and neocortex" <sup>[90]</sup>. *J Neurosci* **23** (34): 10897–903. PMID 14645485.
- Carey, B (2008-12-04). "H. M., an Unforgettable Amnesiac, Dies at 82" <sup>[91]</sup>. *New York Times*. Retrieved 2009-04-27.
- Chiu YC, Algase D, Whall A, *et al.* (2004). "Getting lost: directed attention and executive functions in early Alzheimer's disease patients". *Dement Geriatr Cogn Disord* **17** (3): 174–80. doi:10.1159/000076353. PMID 14739541.
- Chang, BS; Lowenstein DH (2003). "Epilepsy" <sup>[92]</sup>. *N. Engl. J. Med.* **349** (13): 1257–66. doi:10.1056/NEJMra022308. PMID 14507951.
- Cho RY, Gilbert A, Lewis DA (2005). "Ch 22. The neurobiology of schizophrenia". in Charney DS, Nestler EJ. *Neurobiology of Mental Illness*. Oxford University Press US. ISBN 9780195189803.
- Colombo, M; Broadbent N (2000). "Is the avian hippocampus a functional homologue of the mammalian hippocampus?". *Neurosci. Biobehav. Rev.* **24** (4): 465–84. doi:10.1016/S0149-7634(00)00016-6. PMID ref10817844.
- Cooke SF, Bliss TV (2006). "Plasticity in the human central nervous system". *Brain* **129** (Pt 7): 1659–73. doi:10.1093/brain/awl082. PMID 16672292.
- Diana RA, Yonelinas AP, Ranganath C (2007). "Imaging recollection and familiarity in the medial temporal lobe: a three-component model". *Trends Cogn Sci* **11** (9): 379–86. doi:10.1016/j.tics.2007.08.001. PMID 17707683.
- Duvernoy, HM (2005). "Introduction" <sup>[93]</sup>. *The Human Hippocampus* (3rd ed.). Berlin: Springer-Verlag. p. 1. ISBN 3540231919.
- Eichenbaum, H; Otto TA, Wible CG, Piper JM (1991). "Ch 7. Building a model of the hippocampus in olfaction and memory". in Davis JL, Eichenbaum H., *Olfaction*. MIT Press. ISBN 9780262041249.
- Eichenbaum, H; Cohen NJ (1993). *Memory, Amnesia, and the Hippocampal System*. MIT Press.
- Eichenbaum H, Yonelinas AP, Ranganath C (2007). "The medial temporal lobe and recognition memory" <sup>[94]</sup>. *Annu Rev Neurosci* **30**: 123–52. doi:10.1146/annurev.neuro.30.051606.094328. PMID 17417939. PMC 2064941.</ref>
- Ekstrom, AD; Kahana MJ, Caplan JB, Fields TA, Isham EA, Newman EL, Fried I (2003). "Cellular networks underlying human spatial navigation" <sup>[95]</sup> (PDF). *Nature* **425** (6954): 184–88. doi:10.1038/nature01964. PMID 12968182.
- Finger, S (2001). *Origins of Neuroscience: A History of Explorations Into Brain Function*. Oxford University Press US. ISBN 9780195146943.
- Garcia-Segura LM (2009). *Hormones and Brain Plasticity*. Oxford University Press US. ISBN 9780195326611.
- Goto Y, Grace AA (2008). "Limbic and cortical information processing in the nucleus accumbens" <sup>[96]</sup>. *Trends Neurosci* **31** (11): 552–8. doi:10.1016/j.tins.2008.08.002. PMID 18786735. PMC 2884964.
- Gray, JA; McNaughton N (2000). *The Neuropsychology of Anxiety: An Enquiry into the Functions of the Septo-Hippocampal System*. Oxford University Press.
- Hampel H, Bürger K, Teipel SJ, Bokde AL, Zetterberg H, Blennow K (2008). "Core candidate neurochemical and imaging biomarkers of Alzheimer's disease". *Alzheimers Dement* **4** (1): 38–48. doi:10.1016/j.jalz.2007.08.006. PMID 18631949.
- Harrison PJ (2004). "The hippocampus in schizophrenia: a review of the neuropathological evidence and its pathophysiological implications". *Psychopharmacology (Berl.)* **174** (1): 151–62. doi:10.1007/s00213-003-1761-y. PMID 15205886.

- Hebb DO (1949). *Organization of Behavior: a Neuropsychological Theory*. New York: John Wiley. ISBN 0-471-36727-3.
- Huerta PT, Lisman JE (August 1993). "Heightened synaptic plasticity of hippocampal CA1 neurons during a cholinergically induced rhythmic state". *Nature* **364** (6439): 723–5. doi:10.1038/364723a0. PMID 8355787.</ref>
- Jackson JC, Johnson A, Redish AD (2006). "Hippocampal sharp waves and reactivation during awake states depend on repeated sequential experience" <sup>[97]</sup>. *J. Neurosci.* **26** (48): 12415–26. doi:10.1523/JNEUROSCI.4118-06.2006. PMID 17135403.
- Jacobs, LF; Gaulin SJ, Sherry DF, Hoffman GE (1990). "Evolution of spatial cognition: sex-specific patterns of spatial behavior predict hippocampal size" <sup>[98]</sup>. *PNAS* **87** (16): 6349–52. doi:10.1073/pnas.87.16.6349. PMID ref2201026. PMC 54531.
- Jacobs, LF (2003). "The Evolution of the Cognitive Map". *Brain Behav. Evol.* **62** (2): 128–39. doi:10.1159/000072443. PMID 12937351.
- Kahana MJ, Seelig D, Madsen JR (2001). "Theta returns". *Curr Opin Neurobiol* **11** (6): 739–44. doi:10.1016/S0959-4388(01)00278-1. PMID 11741027.
- Kötter R, Stephan KE (1997). "Useless or helpful? The "limbic system" concept". *Rev Neurosci* **8** (2): 139–45. PMID 9344183.
- Joels M (2008). "Functional actions of corticosteroids in the hippocampus". *Eur J Pharmacol* **583** (2-3): 312–321. doi:10.1016/j.ejphar.2007.11.064. PMID 18275953.
- Kuruba R, Hattiangady B, Shetty AK (2009). "Hippocampal neurogenesis and neural stem cells in temporal lobe epilepsy" <sup>[99]</sup>. *Epilepsy Behav* **14 Suppl 1**: 65–73. doi:10.1016/j.yebeh.2008.08.020. PMID 18796338. PMC 2654382.
- Lubenov EV, Siapas AG (May 2009). "Hippocampal theta oscillations are travelling waves". *Nature* **459**: 534. doi:10.1038/nature08010. PMID 19448612.
- Maguire, EA; Burgess N, Donnett JG, Frackowiak RSJ, Firth CD, O'Keefe J (1998). "Knowing Where and Getting There: A Human Navigation Network" <sup>[100]</sup>. *Science* **280** (5365): 921–24. doi:10.1126/science.280.5365.921. PMID 9572740.
- Maguire, EA; Gadian DG, Johnsrude IS, Good CD, Ashburner J, Frackowiak RS, Frith CD (2000). "Navigation-related structural change in the hippocampi of taxi drivers" <sup>[101]</sup>. *PNAS* **97** (8): 4398–403. doi:10.1073/pnas.070039597. PMID 10716738. PMC 18253.
- Malenka RC, Bear MF (2004). "LTP and LTD: an embarrassment of riches". *Neuron* **44** (1): 5–21. doi:10.1016/j.neuron.2004.09.012. PMID 15450156.
- Matsumura N, Nishijo H, Tamura R, Eifuku S, Endo S, Ono T (1999). "Spatial- and task-dependent neuronal responses during real and virtual translocation in the monkey hippocampal formation" <sup>[102]</sup>. *J Neurosci* **19** (6): 2381–93. PMID 10066288. Retrieved 2009-04-27.
- McNaughton, BL; Battaglia FP, Jensen O, Moser EI, Moser MB (2006). "Path integration and the neural basis of the 'cognitive map'" <sup>[103]</sup>. *Nat. Rev. Neurosci.* **7** (8): 663–78. doi:10.1038/nrn1932. PMID 16858394.
- Mizunami M, Weibrecht JM, Strausfeld NJ (1998). "Mushroom bodies of the cockroach: their participation in place memory". *J Comp Neurol* **402** (4): 520–37. doi:10.1002/(SICI)1096-9861(19981228)402:4<520::AID-CNE6>3.0.CO;2-K. PMID 9862324.
- Morris, RGM; Garrud P, Rawlins JNP, O'Keefe J (1982). "Place navigation impaired in rats with hippocampal lesions.". *Nature* **297** (5868): 681–83. doi:10.1038/297681a0. PMID 7088155.
- Moser, EI; Moser M-B (1998). "Functional differentiation in the hippocampus". *Hippocampus* **8** (6): 608–19. doi:10.1002/(SICI)1098-1063(1998)8:6<608::AID-HIPO3>3.0.CO;2-7. PMID 9882018.
- Moser, EI; Kropf E, Moser M-B (2008). "Place Cells, Grid Cells, and the Brain's Spatial Representation System". *Ann. Rev. Neurosci.* **31**: 69. doi:10.1146/annurev.neuro.31.061307.090723. PMID 18284371.

- Nadel L, O'Keefe J, Black A (1975). "Slam on the brakes: a critique of Altman, Brunner, and Bayer's response-inhibition model of hippocampal function". *Behav Biol* **14** (2): 151–62. doi:10.1016/S0091-6773(75)90148-0. PMID 1137539.
- Nakazawa K, McHugh TJ, Wilson MA, Tonegawa S (2004). "NMDA receptors, place cells and hippocampal spatial memory". *Nat Rev Neurosci* **5** (5): 361–72. doi:10.1038/nrn1385. PMID 15100719.
- Nieuwenhuys, R (1982). "An Overview of the Organization of the Brain of Actinopterygian Fishes". *Am. Zool.* **22**: 287–310. doi:10.1093/icb/22.2.287.
- O'Kane, G; Kensinger EA, Corkin S (2004). "Evidence for semantic learning in profound amnesia: An investigation with patient H.M." <sup>[104]</sup>. *Hippocampus* **14** (4): 417–25. doi:10.1002/hipo.20005. PMID 15224979.
- O'Keefe J, Dostrovsky J (1971). "The hippocampus as a spatial map. Preliminary evidence from unit activity in the freely-moving rat". *Brain Res* **34** (1): 171–75. doi:10.1016/0006-8993(71)90358-1. PMID 5124915.
- O'Keefe, J; Nadel L (1978). *The Hippocampus as a Cognitive Map* <sup>[105]</sup>. Oxford University Press.
- Portavella, M; Vargas JP, Torres B, Salas C (2002). "The effects of telencephalic pallial lesions on spatial, temporal, and emotional learning in goldfish". *Brain Res. Bull.* **57** (3-4): 397–99. doi:10.1016/S0361-9230(01)00699-2. PMID 11922997.
- Prull MW, Gabrieli JDE, Bunge SA (2000). "Ch 2. Age-related changes in memory: A cognitive neuroscience perspective". in Craik FIM, Salthouse TA. *The handbook of aging and cognition*. Erlbaum. ISBN 9780805829662.
- Rodríguez, F; López JC, Vargasa JP, Broglia C, Gómez Y, Salas C (2002). "Spatial memory and hippocampal pallium through vertebrate evolution: insights from reptiles and teleost fish". *Brain Res. Bull.* **57** (3-4): 499–503. doi:10.1016/S0361-9230(01)00682-7. PMID ref11923018.
- Rolls ET, Xiang JZ (2006). "Spatial view cells in the primate hippocampus and memory recall". *Rev Neurosci* **17** (1–2): 175–200. PMID 16703951.
- Rosenzweig ES, Barnes CA (2003). "Impact of aging on hippocampal function: plasticity, network dynamics, and cognition". *Prog Neurobiol* **69** (3): 143–79. doi:10.1016/S0301-0082(02)00126-0. PMID 12758108.
- Scoville, WB; Milner B (1957). "Loss of Recent Memory After Bilateral Hippocampal Lesions" <sup>[106]</sup>. *J. Neurol. Neurosurg. Psych.* **20** (1): 11–21. doi:10.1136/jnnp.20.1.11. PMID 13406589. PMC 497229.
- Shettleworth, SJ (2003). "Memory and Hippocampal Specialization in Food-Storing Birds: Challenges for Research on Comparative Cognition". *Brain Behav. Evol.* **62** (2): 108–16. doi:10.1159/000072441. PMID 12937349.
- Skaggs, WE; McNaughton BL, Wilson MA, Barnes CA (1996). "Theta phase precession in hippocampal neuronal populations and the compression of temporal sequences" <sup>[107]</sup>. *Hippocampus* **6** (2): 149–76. doi:10.1002/(SICI)1098-1063(1996)6:2<149::AID-HIPO6>3.0.CO;2-K. PMID ref8797016.
- Skaggs WE, McNaughton BL, Permenter M, *et al.* (2007). "EEG sharp waves and sparse ensemble unit activity in the macaque hippocampus" <sup>[108]</sup>. *J Neurophysiol* **98** (2): 898–910. doi:10.1152/jn.00401.2007. PMID 17522177.
- Sloviter RS (2005). "The neurobiology of temporal lobe epilepsy: too much information, not enough knowledge". *C R Biol* **328** (2): 143–53. doi:10.1016/j.crv.2004.10.010. PMID 15771000.
- Smith DM, Mizumori SJ (2006). "Hippocampal place cells, context, and episodic memory". *Hippocampus* **16** (9): 716–29. doi:10.1002/hipo.20208. PMID 16897724.
- Solstad T, Boccara CN, Kropff E, Moser MB, Moser EI (2008). "Representation of geometric borders in the entorhinal cortex". *Science* **322** (5909): 1865–68. doi:10.1126/science.1166466. PMID 19095945.
- Squire, LR (1992). "Memory and the hippocampus: a synthesis from findings with rats, monkeys, and humans". *Psych. Rev.* **99**: 195–231. doi:10.1037/0033-295X.99.2.195.
- Squire, LR; Schacter DL (2002). *The Neuropsychology of Memory*. Guilford Press.
- Squire LR (2009). "The legacy of patient H.M. for neuroscience" <sup>[109]</sup>. *Neuron* **61** (1): 6–9. doi:10.1016/j.neuron.2008.12.023. PMID 19146808. PMC 2649674.

- Sutherland GR, McNaughton B (2000). "Memory trace reactivation in hippocampal and neocortical neuronal ensembles". *Curr. Opin. Neurobiol.* **10** (2): 180–86. doi:10.1016/S0959-4388(00)00079-9. PMID 10753801.
- Suzuki M, Hagino H, Nohara S, *et al.* (2005). "Male-specific volume expansion of the human hippocampus during adolescence". *Cereb Cortex* **15** (2): 187–93. doi:10.1093/cercor/bhh121. PMID 15238436.
- Vanderwolf CH (2001). "The hippocampus as an olfacto-motor mechanism: were the classical anatomists right after all?". *Behav Brain Res* **127** (1-2): 25–47. doi:10.1016/S0166-4328(01)00354-0. PMID 11718883.
- Vargas, JP; Bingman VP, Portavella M, López JC (2006). "Telencephalon and geometric space in goldfish". *Eur. J. Neurosci.* **24** (10): 2870–78. doi:10.1111/j.1460-9568.2006.05174.x. PMID 17156211.
- VanElzakker, MB; Fevurly RD, Breindel T, Spencer RL (2008). "Environmental novelty is associated with a selective increase in Fos expression in the output elements of the hippocampal formation and the perirhinal cortex" <sup>[110]</sup>. *Learning & Memory* **15** (12): 899–908. doi:10.1101/lm.1196508. PMID 19050162. PMC 2632843.
- West, MJ (1990). "Stereological studies of the hippocampus: a comparison of the hippocampal subdivisions of diverse species including hedgehogs, laboratory rodents, wild mice and men.". *Prog. Brain Res.* **83**: 13–36. doi:10.1016/S0079-6123(08)61238-8. PMID 2203095.
- Wilson MA, McNaughton BL (1994). "Reactivation of hippocampal ensemble memories during sleep" <sup>[111]</sup>. *Science* **265** (5172): 676–79. doi:10.1126/science.8036517. PMID 8036517.
- Winson J (1978). "Loss of hippocampal theta rhythm results in spatial memory deficit in the rat" <sup>[112]</sup>. *Science* **201** (4351): 160–63. doi:10.1126/science.663646. PMID 663646.

## Further reading

### Journals

- *Hippocampus* <sup>[113]</sup> (Wiley)

### Books

- edited by Per Andersen ... (2007). Per Andersen, Richard Morris, David Amaral, Tim Bliss and John O'Keefe. ed. *The Hippocampus Book*. Oxford University Press. ISBN 9780195100273.
- Henri M. Duvernoy, F. Cattin (2005). *The Human Hippocampus: Functional Anatomy, Vascularization, and Serial Sections with MRI*. Springer. ISBN 9783540231912.
- Howard Eichenbaum (2002). *The Cognitive Neuroscience of Memory*. Oxford University Press US. ISBN 9780195141757.
- edited by Patricia E. Sharp. (2002). Patricia E. Sharp. ed. *The Neural Basis of Navigation: Evidence from Single Cell Recording*. Springer. ISBN 9780792375791.
- Philippe Taupin (2007). *The Hippocampus: Neurotransmission and Plasticity in the Nervous System*. Nova Publishers. ISBN 9781600219146.
- John H Byrne, ed (2008). *Learning and Memory: A comprehensive reference*. Elsevier. ISBN 9780123705099.

## External links

- BrainMaps at UC Davis *hippocampus* <sup>[114]</sup>
- Diagram of a Hippocampal Brain Slice <sup>[115]</sup>
- Hippocampus – Cell Centered Database <sup>[116]</sup>
- Temporal-lobe.com An interactive diagram of the rat parahippocampal-hippocampal region <sup>[117]</sup>
- NIF Search – Hippocampus <sup>[118]</sup> via the Neuroscience Information Framework
- Search Hippocampus on BrainNavigator <sup>[119]</sup> via BrainNavigator

## References

- [1] <http://braininfo.rprc.washington.edu/Scripts/hiercentraldirectory.aspx?ID=164>
- [2] [http://www.nlm.nih.gov/cgi/mesh/2007/MB\\_cgi?mode=&term=Hippocampus](http://www.nlm.nih.gov/cgi/mesh/2007/MB_cgi?mode=&term=Hippocampus)
- [3] [http://www.neurolex.org/wiki/birmlex\\_721](http://www.neurolex.org/wiki/birmlex_721)
- [4] Duvernoy, 2005
- [5] Finger, p. 183
- [6] Eichenbaum *et al.*, 1991
- [7] Vanderwolf, 2001
- [8] Nadel *et al.*, 1975
- [9] Gray and McNaughton, 2000
- [10] Best & White, 1999
- [11] Scoville and Milner, 1957
- [12] N.Y. Times, 12-06-2008
- [13] Squire, 2009
- [14] Squire, 1992
- [15] Eichenbaum and Cohen, 1993
- [16] O'Keefe and Dostrovsky, 1971
- [17] O'Keefe and Nadel, 1978
- [18] Moser *et al.*, 2008
- [19] Squire and Schacter, 2002
- [20] VanElzakker *et al.*, 2008
- [21] Squire and Schacter, 2002, Ch. 1
- [22] Diana *et al.*, 2007
- [23] Skaggs *et al.*, 1996
- [24] Matsumara *et al.*, 1999
- [25] Rolls and Xiang, 2006
- [26] Ekstrom *et al.*, 2003
- [27] Smith and Mizumori, 2006
- [28] O'Keefe and Nadel
- [29] Chiu *et al.*, 2004
- [30] Morris *et al.*, 1982
- [31] Solstad *et al.*, 2008
- [32] Maguire *et al.*, 1998
- [33] Maguire *et al.*, 2000
- [34] Amaral and Lavenex, 2006
- [35] Kötter & Stephan, 1997
- [36] Moser and Moser, 1998
- [37] Winson, 1978
- [38] Eichenbaum *et al.*, 2007
- [39] Buzsáki, 2006
- [40] Buzsáki *et al.*, 1990
- [41] Skaggs *et al.*, 2007
- [42] Lubenov & Siapas, 2009
- [43] Buzsáki, 2002
- [44] Cantero *et al.*, 2003
- [45] Vanderwolf, 1969
- [46] Huerta & Lisman, 1993



- [47] Kahana *et al.*, 2001
- [48] Buzsáki, 1986
- [49] Wilson & McNaughton, 1994
- [50] Jackson *et al.*, 2006
- [51] Sutherland & McNaughton, 2000
- [52] Buzsáki, 1989
- [53] Ramon y Cajal, 1894
- [54] Hebb, 1948
- [55] Bliss & Lømo, 1973
- [56] Cooke & Bliss, 2006
- [57] Malenka & Bear, 2004
- [58] Nakazawa *et al.*, 2004
- [59] Hampel *et al.*, 2008
- [60] Prull *et al.*, 2000, p. 105
- [61] Prull *et al.*, 2000, p. 107
- [62] Rosenzweig & Barnes, 2003
- [63] Burke & Barnes, 2006
- [64] Joels, 2008
- [65] Campbell & MacQueen, 2004
- [66] Garcia-Segura, pp. 170–71
- [67] Chang and Lowenstein, 2003
- [68] Sloviter, 2005
- [69] Kuruba *et al.*, 2009
- [70] Harrison, 2004
- [71] Goto & Grace, 2008
- [72] Boyer *et al.*, 2007
- [73] West, 1990
- [74] Suzuki *et al.*, 2005
- [75] Jacobs, 2003
- [76] Jacobs *et al.*, 1990
- [77] Aboitiz *et al.*, 2003
- [78] Rodríguez *et al.*, 2002
- [79] Colombo and Broadbent, 2000
- [80] Shettleworth, 2003
- [81] Nieuwenhuys, 1982
- [82] Portavella *et al.*, 2002
- [83] Vargas *et al.*, 2006
- [84] Broglio *et al.*, 2005
- [85] Mizunami *et al.*, 1998
- [86] <http://www.pubmedcentral.nih.gov/articlerender.fcgi?tool=pmcentrez&artid=1350458>
- [87] [http://linkinghub.elsevier.com/retrieve/pii/0306-4522\(89\)90423-5](http://linkinghub.elsevier.com/retrieve/pii/0306-4522(89)90423-5)
- [88] <http://osiris.rutgers.edu/BuzsakiHP/Publications/PDFs/BuzsakiTheta.pdf>
- [89] <http://www.pubmedcentral.nih.gov/articlerender.fcgi?tool=pmcentrez&artid=524959>
- [90] <http://www.jneurosci.org/cgi/content/full/23/34/10897>
- [91] <http://www.nytimes.com/2008/12/05/us/05hm.html>
- [92] <http://www.medical-journals.com/r03102b.htm>
- [93] <http://books.google.com.au/books?id=5GkpPjk5z1IC&pg=PP1&dq=Duvernoy,+The+Human+Hippocampus&client=firefox-a&cd=1#v=onepage&q=&f=true>
- [94] <http://www.pubmedcentral.nih.gov/articlerender.fcgi?tool=pmcentrez&artid=2064941>
- [95] <http://memory.psych.upenn.edu/publications/files/EkstEtal03.pdf>
- [96] <http://www.pubmedcentral.nih.gov/articlerender.fcgi?tool=pmcentrez&artid=2884964>
- [97] <http://www.jneurosci.org/cgi/content/full/26/48/12415>
- [98] <http://www.pnas.org/cgi/reprint/87/16/6349>
- [99] <http://www.pubmedcentral.nih.gov/articlerender.fcgi?tool=pmcentrez&artid=2654382>
- [100] <http://www.sciencemag.org/cgi/content/abstract/280/5365/921>
- [101] <http://www.pnas.org/cgi/content/full/97/8/4398>
- [102] <http://www.jneurosci.org/cgi/content/full/19/6/2381>
- [103] <http://www.nature.com/nrn/journal/v7/n8/abs/nrn1932.html>
- [104] <http://www3.interscience.wiley.com/cgi-bin/abstract/108562086/ABSTRACT>

- 
- [105] <http://www.cognitivemap.net/HCMpdf/HCMChapters.html>
  - [106] <http://neuro.psychiatryonline.org/cgi/content/full/12/1/103>
  - [107] <http://www3.interscience.wiley.com/cgi-bin/abstract/72392/ABSTRACT>
  - [108] <http://jn.physiology.org/cgi/content/full/98/2/898>
  - [109] <http://www.pubmedcentral.nih.gov/articlerender.fcgi?tool=pmcentrez&artid=2649674>
  - [110] <http://www.pubmedcentral.nih.gov/articlerender.fcgi?tool=pmcentrez&artid=2632843>
  - [111] <http://www.sciencemag.org/cgi/pmidlookup?view=long&pmid=8036517>
  - [112] <http://www.sciencemag.org/cgi/pmidlookup?view=long&pmid=663646>
  - [113] <http://www.wiley.com/WileyCDA/WileyTitle/productCd-HIPO.html>
  - [114] <http://brainmaps.org/index.php?q=hippocampus>
  - [115] <http://www.stanford.edu/group/maciverlab/hippocampal.html>
  - [116] <http://ccdb.ucsd.edu/sand/main?stype=lite&keyword=hippocampus&Submit=Go&event=display&start=1>
  - [117] <http://www.temporal-lobe.com>
  - [118] <http://www.neuinfo.org/nif/nifgw.html?query=%22Hippocampus%22>
  - [119] <http://www.brainnav.com/browse?highlight=8d89b5&specid=2>
-

# Article Sources and Contributors

**Hippocampus** *Source:* <http://en.wikipedia.org/w/index.php?oldid=383773920> *Contributors:* 404 page not found, 5glacieres, A More Perfect Onion, A314268, ABF, Action potential, Aitias, Alansohn, Alex.tan, Altzinn, Amaranth12498, Ancheta Wis, Andrewlp1991, Andykolandy, Angelic Wraith, Anna Lincoln, Anthonyhcole, Arcadian, Arseni, Art LaPella, Artur Lion, Autodidactyl, AxelBoldt, Belovedfreak, BenTheMen, Benbest, Beno1000, Bird, Borgx, Brain-mapper, Brockston, Bryan Derksen, Bucketoftruth, Butsuri, Cacycle, CanadianLinuxUser, Canihaveacookie, Casliber, Ccie13836, Cheekywee, Chirality, Chuunen Baka, Closedmouth, Cocacola456123, Colin, CommonsDelinker, CopperKettle, Cricinfouser, Crusio, D0762, Dabomb87, Dan aka jack, Dana boomer, Dando, DanielCD, Darkwind, Dave6, Dekimasu, Delldot, Diberrri, Digfarenough, Dogerty12, DougsTech, Drmaslam, Drphilharmonic, Dtone157, Duckbill, Ealdgyth, Edward, Elbo821, Elikarag, Enirac Sum, Entilword, Epbr123, Eric Kvaalen, FG, Famousdog, Faradayplank, Farquaadhnmn, FayssalF, Fnielsen, Fvasconcellos, George dubya Bush, Gimme danger, Ginsengbomb, Gioto, GoodOIRickyTicky3, Gwernol, Hagerman, Hajenso, HamburgerRadio, Hdante, Health Researcher, Hekerui, I might be batman, Ianvitro, Invisifan, IvanLitvinov, JRGL, JWSchmidt, Jackol, James Baraldi, Jr., Japanese Searobin, Jean-Francois Gariepy, JeremyA, Jfdwolff, Jfurr1981, Jimp, Jlam4911, Jmarchn, Jmh649, Joe07734, Johnniq, JordanITP, Jrolston, Juhachi, Kaini, Keenan ahern, Kelvinc, Kintetsubuffalo, Korpo, Kpmiyapuram, Kudret abi, Kurtle, Lars Washington, LedgendGamer, Leonard^Bloom, LittleHow, Loliveke, Looie496, Lova Falk, MBVECO, Martin451, Mbmaciver, McMannDavid, Mercury, Merlin the Wizard, Mfirbank, Mlgiganteus1, Michael Devore, Michael Hardy, Michaelbusch, Mikael Hågström, Miqounger03, Misarxist, Mrs.meganmmc, Music&Medicine, Myrvin, N.vanstrien, Najmakb, Navicular, NawlinWiki, Nbauman, Nephron, NewEnglandYankee, NifCurator1, Niteowlneils, Nrets, Odin.de, Ongar the World-Weary, Outrigger, Owen, Pacaro, Paskari, Pdmckinley, Pedant17, Peter M Gerdes, Piledhigheranddeeper, Premeditated Chaos, PsychoProf, Psychosomatic Tumor, Quietbritishjim, Rachel1, RandomP, Rbarreira, Rcarlosagis, Redpriest187, Reedy, Rich Farmbrough, Riptor, Rjwilmsi, Robert Merkel, RobertG, Rreagan007, Rurigok, Ryulong, SandyGeorgia, Sasata, Sausagerooster, Sewing, Sgbsaros, SimonP, Skater11091, Spikey1973, Stevenmitchell, Stuartlayton, Tal Celes, Tameamseo, Techdoctor, Thanhluan001, TheLimbicOne, Thuglas, TpbBradbury, Tsemii, Tucci528, UltraBibendum, Urod, Vcmartin, Vedantm, Vegetator, Was a bee, Washington irving, WhatamIdoing, WikiDao, Wikiwikifast, Wimt, Wouterstomp, Xenonice, 304 anonymous edits

# Image Sources, Licenses and Contributors

**file:Gray739-emphasizing-hippocampus.png** *Source:* <http://en.wikipedia.org/w/index.php?title=File:Gray739-emphasizing-hippocampus.png> *License:* unknown *Contributors:* User:Looie496

**File:Hippocampus and seahorse cropped.JPG** *Source:* [http://en.wikipedia.org/w/index.php?title=File:Hippocampus\\_and\\_seahorse\\_cropped.JPG](http://en.wikipedia.org/w/index.php?title=File:Hippocampus_and_seahorse_cropped.JPG) *License:* Creative Commons Attribution-Sharealike 3.0 *Contributors:* User:Anthonyhcole

**Image:Triangle-place-cells.png** *Source:* <http://en.wikipedia.org/w/index.php?title=File:Triangle-place-cells.png> *License:* Public Domain *Contributors:* User:Looie496

**Image:Brainmaps-macaque-hippocampus.jpg** *Source:* <http://en.wikipedia.org/w/index.php?title=File:Brainmaps-macaque-hippocampus.jpg> *License:* Creative Commons Attribution 3.0 *Contributors:* brainmaps.org

**Image:CajalHippocampus (modified).png** *Source:* [http://en.wikipedia.org/w/index.php?title=File:CajalHippocampus\\_\(modified\).png](http://en.wikipedia.org/w/index.php?title=File:CajalHippocampus_(modified).png) *License:* Public Domain *Contributors:* User:Looie496

**Image:Rat-hippocampal-activity-modes.png** *Source:* <http://en.wikipedia.org/w/index.php?title=File:Rat-hippocampal-activity-modes.png> *License:* Public Domain *Contributors:* User:Looie496

# License

Creative Commons Attribution-Share Alike 3.0 Unported  
<http://creativecommons.org/licenses/by-sa/3.0/>