

WatchGuard® SSL 100

For anywhere, anytime secure remote access

Recommended for small to mid- size businesses with up to 100 concurrent remote users

The WatchGuard® SSL 100 is an affordable, easy-to-use secure remote access appliance that provides reliable connectivity to corporate data and resources for anywhere, anytime productivity.

The beauty of this product is its flexibility. It allows a business to make its secure remote connectivity deployment as simple or as sophisticated as its business requirements dictate, and at a very attractive price.

For small businesses looking for extreme ease of use, this means remote access to standard network resources can be maintained with virtually no management overhead. And for end users, remote access is a breeze.

Businesses with more complex needs can choose to use a mix of both tunnel and portal-based resources, provide technical support to a remote user's desktop, and control access based on a granular user/device criteria.

WatchGuard SSL 100 allows you to deliver the level of remote access you need, at a price you can afford.



Earth-friendly technology



What a WatchGuard® SSL appliance provides for your business:

PRODUCTIVITY

- Remote employees have easy access to essential corporate resources including email, web conferencing, and CRM from any web-enabled device
- Non-native applications, including SSH and RDP, can be delivered through a remote user's web browser for maximum productivity
- Time-to-value is determined in minutes. Basic configuration enables end users to simply double-click an icon and authenticate, and the access client automatically loads, establishing an SSL tunnel for complete access to the backend network
- Desktop-sharing features minimize downtime by allowing your helpdesk to connect to a remote employee's device to troubleshoot technical problems

EASE OF USE

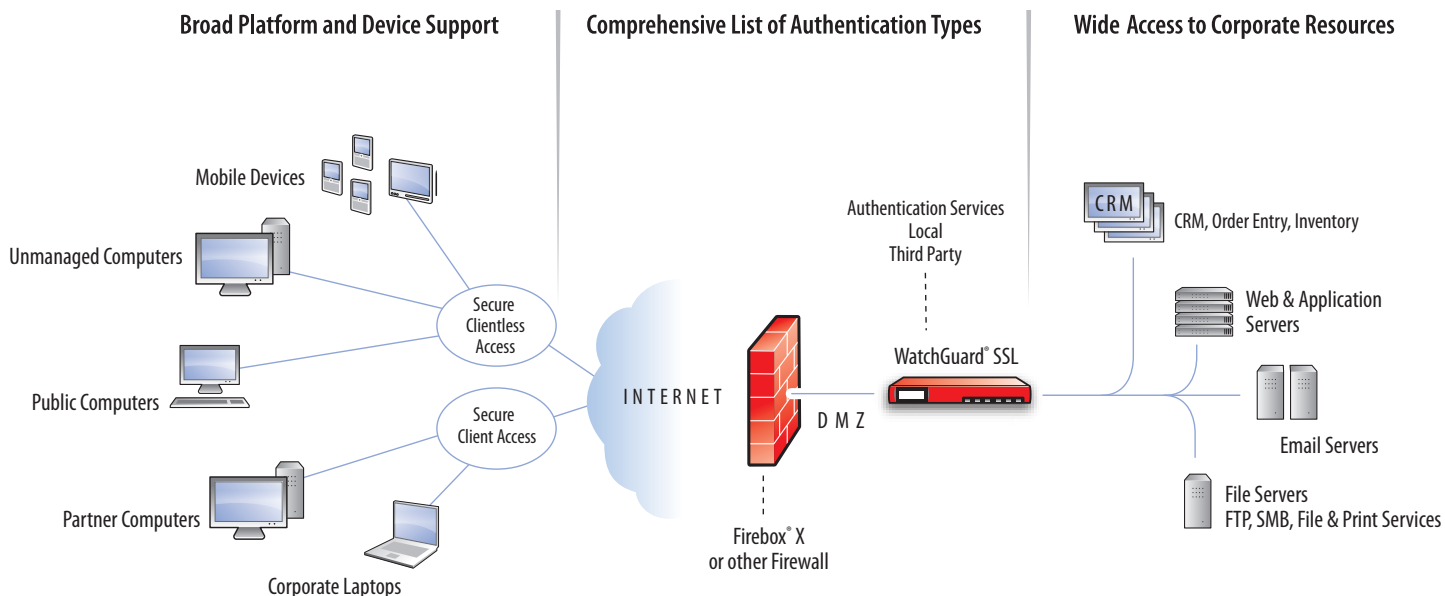
- An all-in-one appliance – just plug and play – with no additional software components to buy, install, or manage
- Users log on once and have access to everything in the portal – no need for them to waste time repeatedly re-authenticating themselves
- IT administrators can have the appliance up and running quickly
- Consolidated auditing collects all information about access, identity, and system events in a central repository for quick insight into user and system-based activities

SECURITY

- Comprehensive endpoint integrity checking ensures network protection by allowing organizations to configure and enforce endpoint compliance including checks for anti-virus, anti-spyware, firewall software, and many other device attributes
- Session clean up removes all traces of access from the endpoint – including file deletion and cache cleaning – to prevent data leakage through another user's covert re-entry to network resources
- Local and third party authentication support, including strong authentication, ensures only authorized users can access the network, keeping intruders out

FLEXIBILITY

- Client and clientless access – including Vista and 64bit support
- Can be used for the simplest deployment, or IT administrators can take it to the next level by taking advantage of endpoint integrity checking, Java-based application delivery, bi-directional tunneling, and more
- Uniquely capable of supporting any class of applications. Administrator can choose to publish only web applications, create tunnels to network or specific resources, as well as deliver applications to the desktop for more sophisticated use
- IT administrators can integrate solution with existing third-party authentication solution, such as Microsoft Active Directory, or rely on onboard LDAP server to configure local authentication, as well as use built-in two-factor authentication including SMS-based tokens and web keypad for identity validation
- All information in audit logs can be shown in multiple graphical formats for current and historical reporting, and be exported to third-party utilities, such as Excel or Crystal Reports, for further data mining and asset management



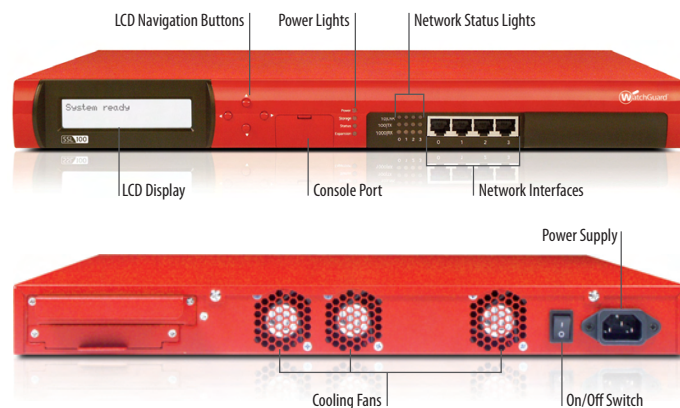
WatchGuard® SSL 100 supports up to 100* concurrent sessions. It is uniquely capable of supporting any class of application. Drop it into your network and your remote users can have access to all the applications they need to stay productive, including web-based, client/server, mainframe, terminal server, file servers, & online collaboration tools.

Expert Guidance and Support

LiveSecurity® Service from WatchGuard is the most comprehensive support and maintenance offering in the industry, putting a global team of security experts behind you to make the complex job of IT security management easier. LiveSecurity provides:

- Hardware warranty with advance hardware replacement
- Free software updates
- Technical support with a targeted four-hour response time
- Up-to-the-minute security alerts
- Innovative educational resources, including podcasts, videos, and handy security-training modules for end users

An initial 90-day LiveSecurity subscription is automatically activated for a new WatchGuard SSL 100 when the appliance's user packs are activated.



Dimensions and Power for WatchGuard SSL 100 (WG100000)

Product Dimensions	1.75" x 16.75" x 14.25" (4.5 x 42.6 x 36.2 cm)
Shipping Dimensions	7.25" x 21.75" x 19.0" (18.4 x 54.6 x 48.3 cm)
Shipping Weight	13.7 lbs (6.21 Kg)
AC Power	100-240 VAC Autosensing
Power Consumption	U.S. 60 Watts (860 Cal/min or 205 BTU/hr)
Rack Mountable	Yes

*WatchGuard SSL 100 supports 100 simultaneous authenticated users, each with multiple connections.

Address: 505 Fifth Avenue South, Suite 500, Seattle, WA 98104 • Web: www.watchguard.com • U.S. Sales: 1.800.734.9905 • International Sales: +1.206.613.0895

No express or implied warranties are provided for herein. All specifications are subject to change and expected future products, features or functionality will be provided on an if and when available basis. ©2009 WatchGuard Technologies, Inc. All rights reserved. WatchGuard, the WatchGuard logo, Firebox, Firewall, LiveSecurity, and Core are either trademarks or registered trademarks of WatchGuard Technologies, Inc. in the United States and/or other countries. All other tradenames are the property of their respective owners. Part No. WGCE66629_051109