



PEARSON

MDD Client Installation

Learning Objectives

In this Job Aid, you will learn how to:

- | | | |
|----------|--|----------------|
| 1 | Preparation for Installation | PAGE 2 |
| 2 | Uninstall previous version | PAGE 3 |
| 3 | MDD Client Installation Steps: Mac OS X | PAGE 4 |
| 4 | MDD Client Installation Steps: Windows | PAGE 8 |
| 5 | MDD Client Login Steps for Mac Users | PAGE 11 |
| 6 | MDD Client Login Steps for Windows Users | PAGE 13 |

1 | Preparation for Installation

- 1 Prior to installation of MDD client software **Java JRE** needs to be installed.

NOTE This is installed by default on Macs and may need to be installed on Windows. Download from:
<http://www.java.com/en/download/manual.jsp>.

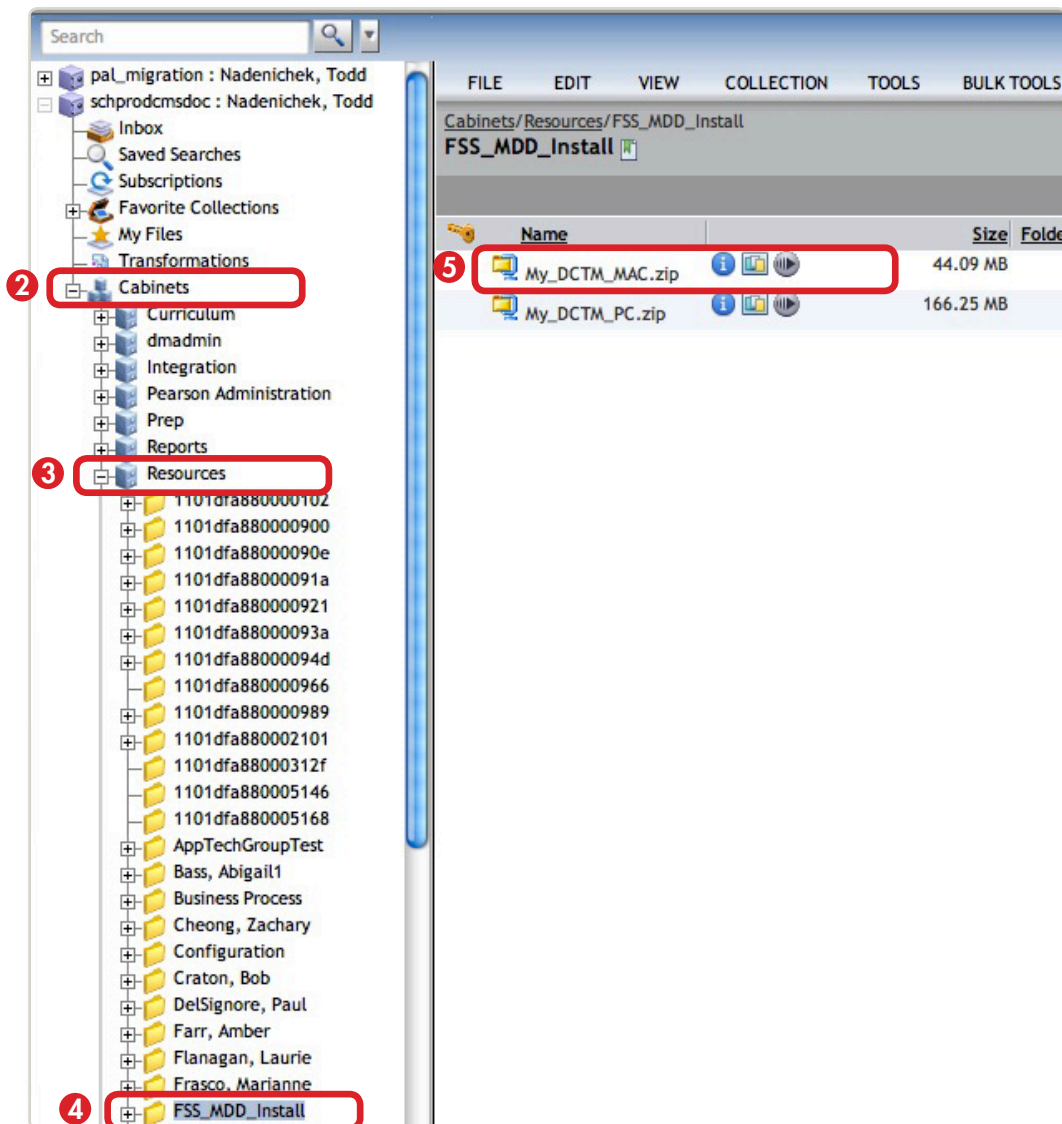
Though installed by default on Macs, it may be necessary to run **Software Update** to make sure that you're using the most current version for your version of the operating system. Do not update Safari beyond 5.0.5. Safari 5.1 is currently incompatible with Documentum.

2 | Uninstall previous version

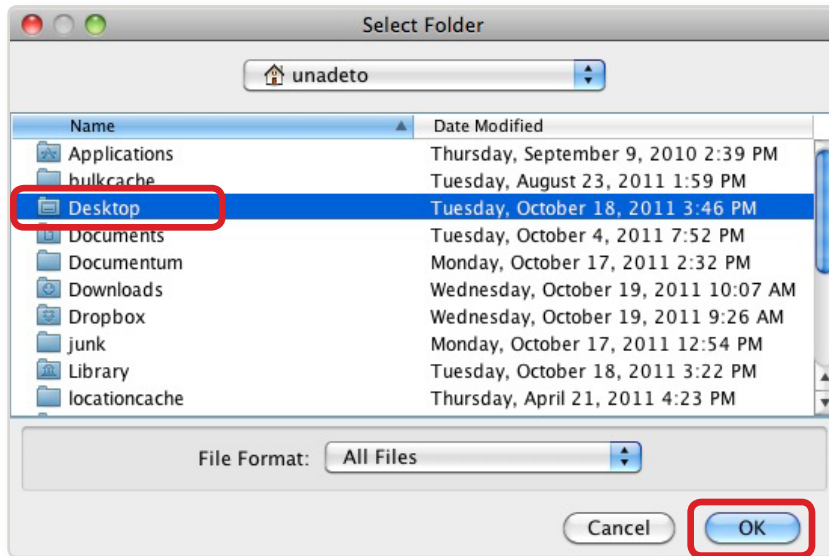
- 1 To install the MDD client on a machine that currently has FSS installed, FSS must first be uninstalled. To reconfigure an installation of MDD, it must be uninstalled and reinstalled with the new configuration.
 - On a Mac, the uninstaller is located at **/Applications/Documentum/Uninstall/FSS/**. You will open the application called **Uninstall Documentum File Share Services** or to reconfigure MDD, **Uninstall My Documentum for Desktops**.
 - On Windows XP, go to **Control Panel > Add Or Remove Programs**, and select **Documentum File Share Services Client** or to reconfigure MDD, **Uninstall My Documentum for Desktops** and click **Remove**.
 - On Windows 7, go to **Control Panel > Programs and Features**, and select **Documentum File Share Services Client** or to reconfigure MDD, **Uninstall My Documentum for Desktops** and click **Remove**.


3 MDD Client Installation Steps: Mac OS X

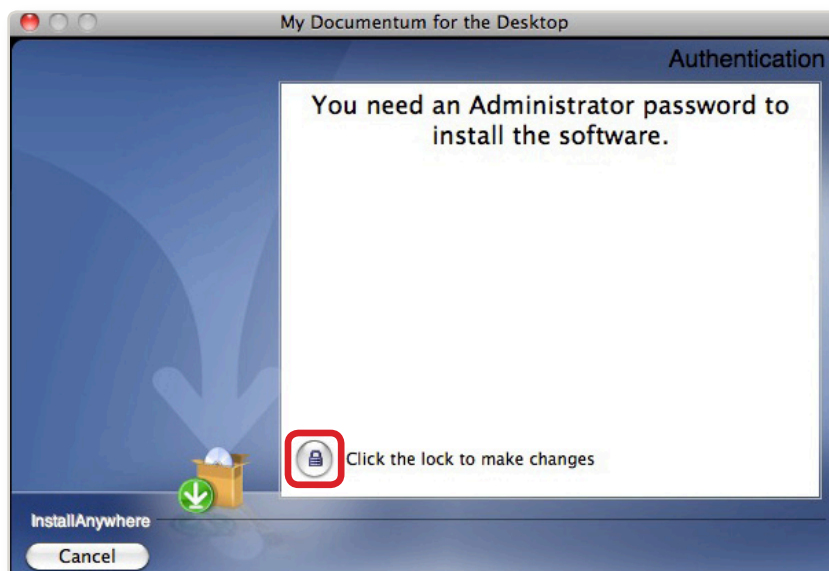
- 1 Log in to <http://dctm.pearson.com>.
- 2 In the Navigation pane, click the + sign next to the **Cabinets** node.
- 3 Click the + sign to expand the **Resources** cabinet.
- 4 Click the + sign to expand the **FSS_MDD_Install** folder.
- 5 Its contents display in the Content pane. Select the **My_DCTM_MAC.zip** file.




- 6 Click the **FILE** menu, select **Export**. The **Select Folder** prompt appears. Select your **Desktop** and click the **OK** button.



- 7 Locate the zip file on your desktop, uncompress the file and then double-click the **My Documentum for the Desktop Client** application.
- 8 The **Authentication** screen displays.
- 9 Click the **lock**  icon.



- 10 The Authenticate username/password screen displays.
- 11 Enter the Administrator's password and click the **OK** button.
- 12 If the correct password was entered, the installer configures and the **Introduction** screen appears.
- 13 Verify that no other programs are running and click the **Next** button.
- 14 The **License Agreement** screen displays.
- 15 Select the option to accept the terms and click the **Next** button.
- 16 The **Server Information** screen displays.
- 17 Enter the URL, **http://dctmfss.pearson.com:80**, for the MDD Server in the text box, and click the **Next** button.



Enter My Documentum for Desktop Server URL:

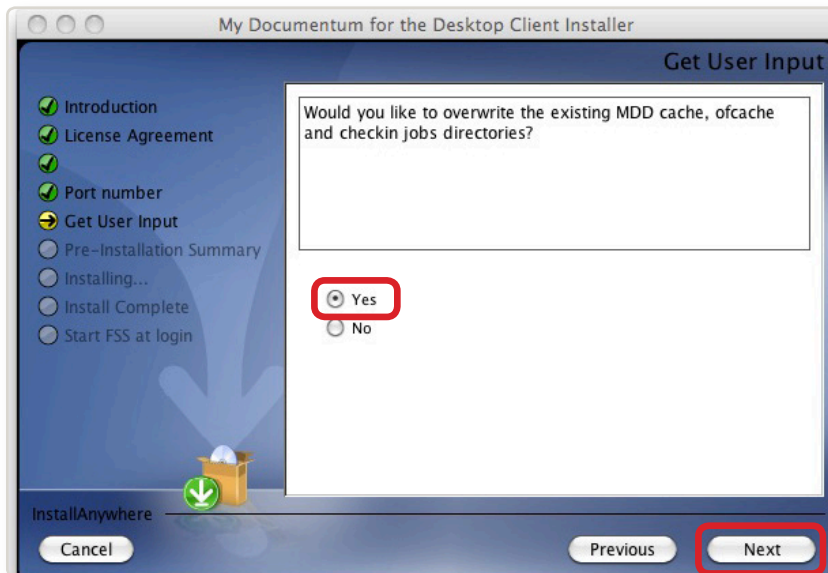
http://dctmfss.pearson.com:80

- 18 The **Client Port Number** screen appears.
- 19 Enter the port number as **8088** and click the **Next** button.



Port Number: 8088

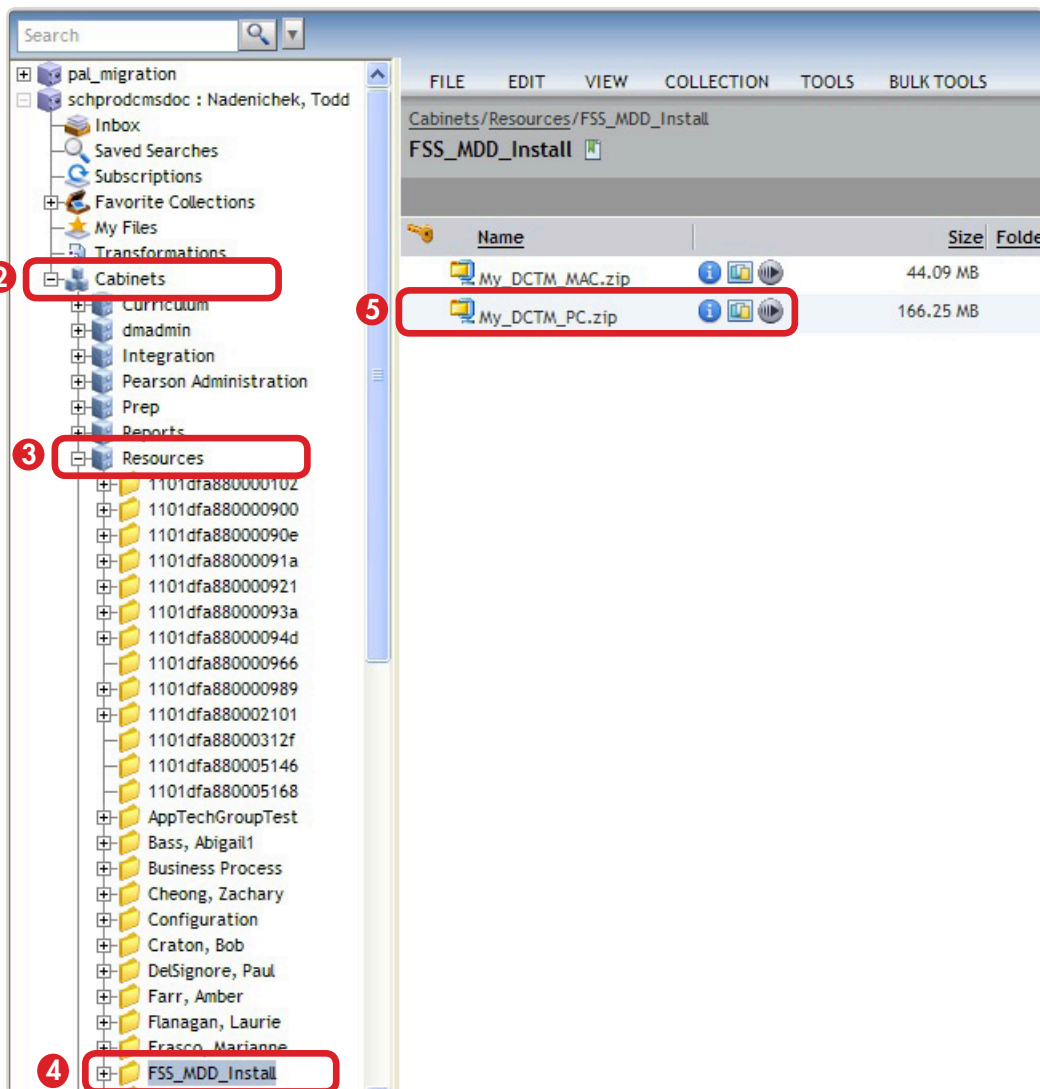
- 20 The *Would you like to overwrite the existing FSS cache of cache and checkin jobs directories?* message appears. Choose **Yes** and then click the **Next** button.



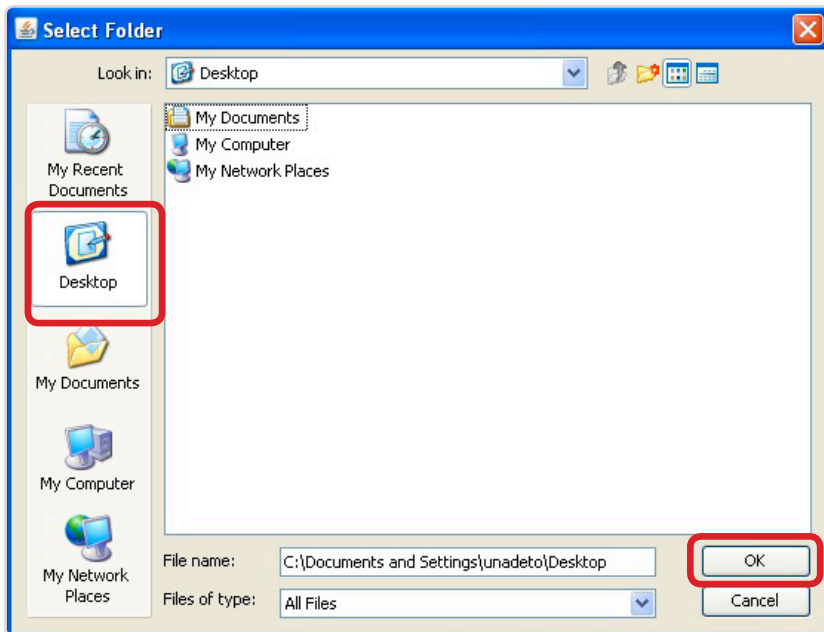
- 21 Review the installation specifications. When you are satisfied that they are correct, click the **Install** button.
- 22 The installation process begins.
- 23 A post summary install screen displays at the end of the installation. Click the **Next** button.
- 24 The **MDD startup** screen displays.
- 25 You are prompted to select whether My Documentum for Desktop starts automatically upon login. Select the **Yes** button and then click the **Done** button.
- 26 Restart your computer.

4 MDD Client Installation Steps: Windows

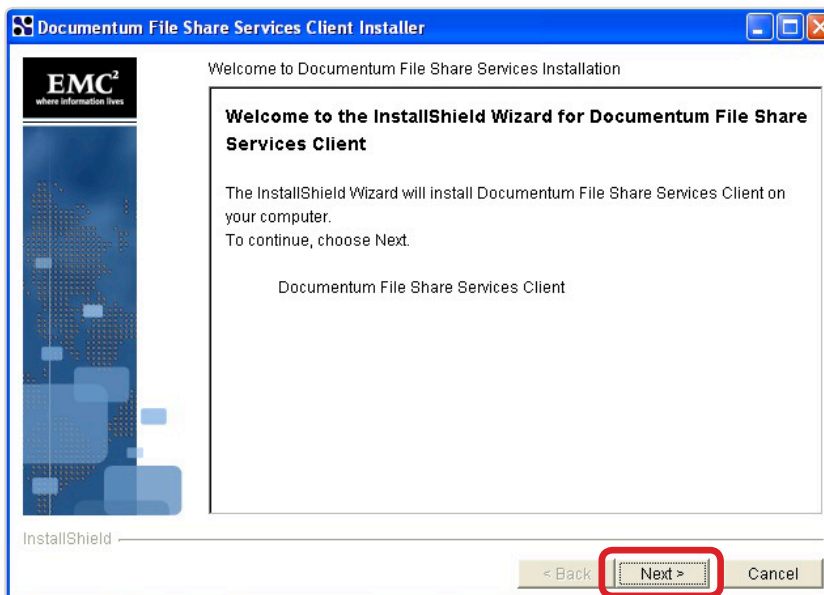
- 1 Log in to <http://dctm.pearson.com>.
- 2 In the Navigation pane, click the + sign next to the **Cabinets** node.
- 3 Click the + sign to expand the **Resources** cabinet.
- 4 Click the + sign to expand the **FSS_MDD_Install** folder.
- 5 Its contents display in the Content pane. Select the **My_DCTM_PC.zip** file.



- 6 Click the **FILE** menu, select **Export**. The **Select Folder** prompt appears. Select your **Desktop** and click the **OK** button.



- 7 Locate the zip file on your desktop, uncompress the file and then double-click the **setup.exe** application.
- 8 The **My Documentum for Desktop - InstallShield Wizard** prompt appears, followed by the **Welcome** screen. Click the **Next >** button.

**Note**

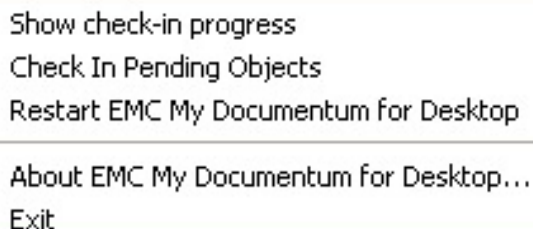
The **My_DCTM_PC.zip** archive contains two sub-archives with 32 and 64 bit installers. Windows 7 users should try the 64 bit installer first, but please consult with your system administrator if you have any questions.

- 9 The license agreement screen displays. Select the option to agree with the terms, then click the **Next** button.
- 10 The next screen indicates the installation path for the File Share Services Client. The default installation path is **C:\Program Files\Documentum**. Click the **Next** button.
- 11 You are prompted to enter the URL, of the File Share Services Server. Enter the full server URL, **http://dctmfss.pearson.com:80**, including the Server IP and the port number, then click the **Next** button.

Please enter the URL of the server.

http://dctmfss.pearson.com:80

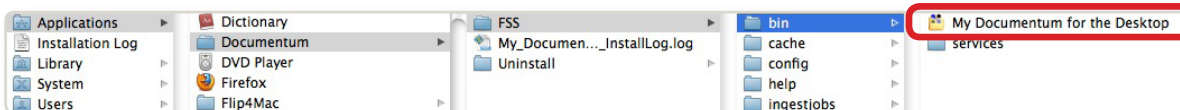
- 12 Select **Next** to continue the installation with the default value of **no** so that Center Stage is disabled.
- 13 You will receive notification when the installation has finished. Restart your machine.
- 14 Click the **Finish** button.
- 15 When the installation has finished, the EMC Documentum MDD client services is running in the Windows Services window and the MDD Monitor icon appears in the system tray.



Show check-in progress
Check In Pending Objects
Restart EMC My Documentum for Desktop
About EMC My Documentum for Desktop...
Exit

5 | MDD Client Login Steps for Mac Users

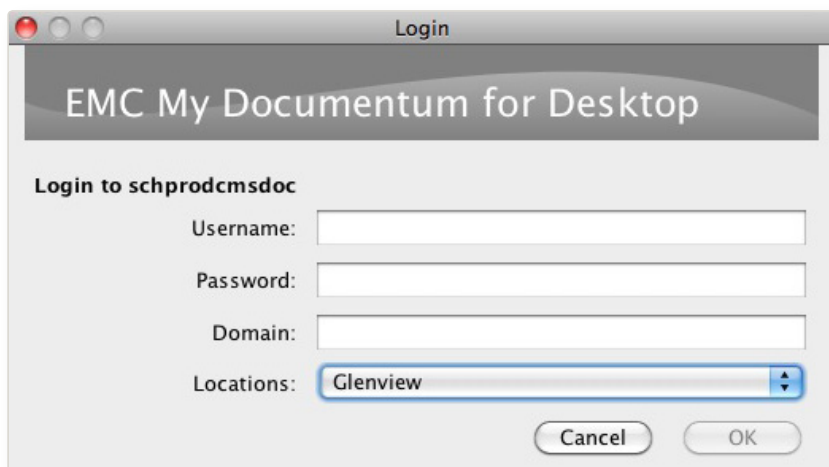
- 1 Navigate to your **Applications** folder, click the **Documentum** folder, then click the **FSS** folder, and finally click the **Bin** folder.
- 2 Double click **My Documentum for the Desktop** to start the client.



- 3 Verify that the **MDD Icon** displays in the system Menu bar. This may take a minute or two to appear.
- 4 Select the **MDD Icon** in system menu bar and select **Repositories**.
- 5 Then click, **schprodcmsdoc**, to select the repository.



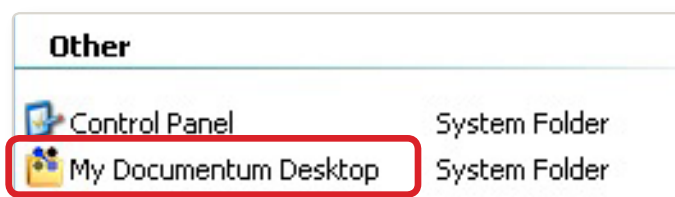
- 6 The **Login** prompt displays.



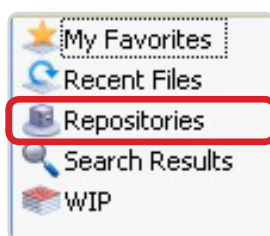
- 7 In the **Username** text box type the user name.
- 8 In the **Password** text box type the password.
- 9 Click the **OK** button.
- 10 Click on **Finder** and verify that the repository is mounted and available.

6 | MDD Client Login Steps for Windows Users

- 1 Select **Start > All Programs > Documentum > Start MDD**.
- 2 Go to **My computer** and verify that **My Documentum Desktop** icon exists there.
- 3 Double click the **My Documentum Desktop** icon.



- 4 Click the **Repositories** icon.



- 5 Then click, **schprodcmsdoc**.

Name	Object ...	Description	ID	Version
pal_migration	Repository	PAL Migration Repository	12285	6.5.0.308 SP2P1000 Linux.Oracle
schprodcmsdoc	Repository	Schools Production Repository	122792	6.5.0.308 SP2P1000 Linux.Oracle

- 6 Verify that **Login** prompt displays.
- 7 In the **Username** text box type the user name.
- 8 In the **Password** text box type the password.
- 9 Click the **OK** button.

