

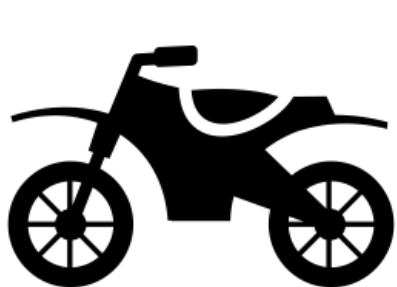


Comprehensive Travel Guide

Engineers' House

The Promenade, Clifton Down, Clifton, Bristol, BS8 3NB

Shuttle Bus Contact Number: **079 0394 9550** Reception Contact Number: **0117 906 4800**



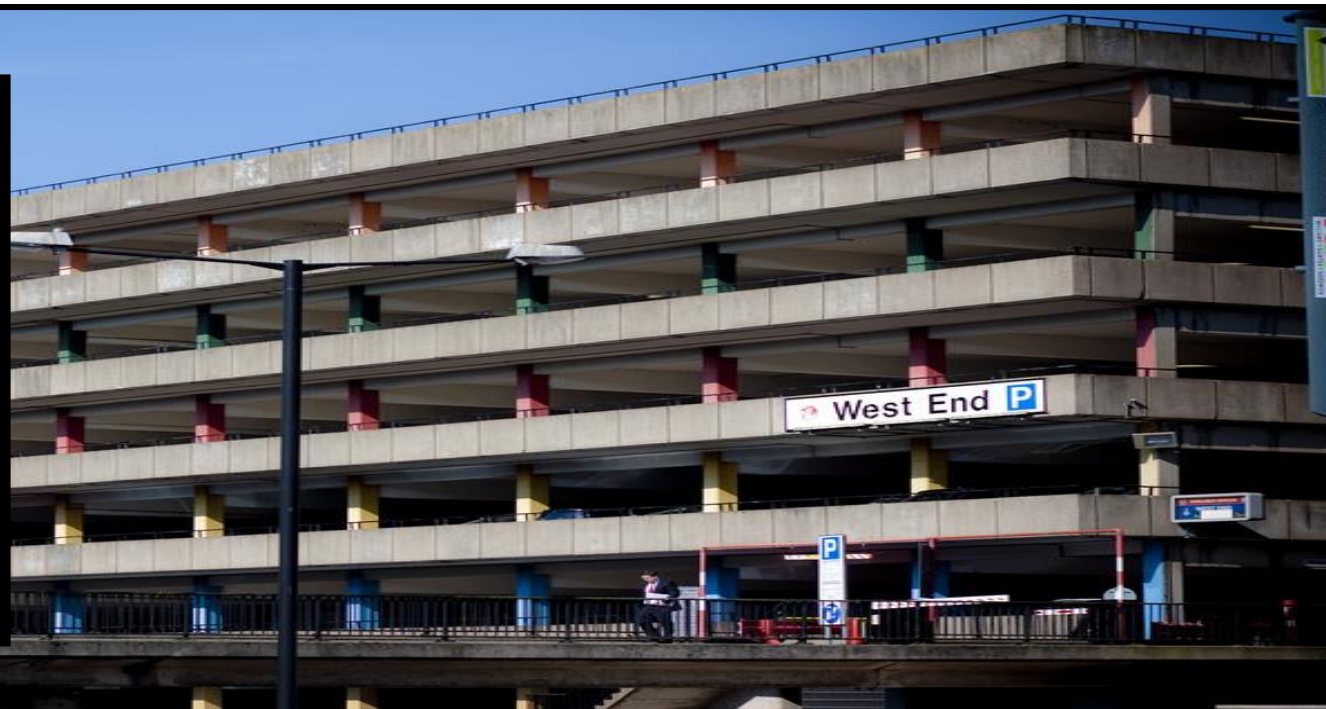
****No parking restrictions on Weekends or after 5PM Monday – Friday****

Engineers' House Shuttle Service from the West End Car Park

Located on Jacobs Wells Rd, Berkeley place, Clifton, Bristol, BS8 1EH

Shuttle service pickup is from outside of the Bath Stores situated just underneath the car park from 7.30am Mon – Fri. On arrival, please call:

**079 0394 9550 or
0117 906 4800**



West End Car Park Charges

1 Hour	£1.50
2 Hours	£2.50
3 Hours	£3.50
4 Hours	£5.50
Daytime	£12.00

(Daytime: in after 8am and out by 6pm)

Overview: Engineers' House Shuttle Service

Engineers' House offer a fast and hassle free complimentary shuttle service from the West End Car Park located at the top of Jacob Wells Road. This is a direct service to Engineers House for all course delegates. **This service runs from 7.30am Monday to Friday and then on request by contacting Engineers' House. The journey generally takes 4 – 6 minutes. Return journeys can be booked upon request with the reception team.** Departing delegates are to report to reception at the end of their event where our Shuttle driver will return them to the West End Car Park within 4 - 6 minutes.

Our friendly driver will be on hand to assist you on the day. Enjoy!

Engineers' House Shuttle Service from the West End Car Park

Located on Jacobs Wells Rd, Berkeley place, Clifton, Bristol, BS8 1EH



Shuttle service pickup is from outside of the Bath Stores situated just underneath the car park - from 7.30am Mon - Fri
On arrival, please call: **079 0394 9550 or 0117 906 4800**

How to get to the West End Car Park

From London on the M4 and from the Midlands & North on the M5

At M4 junction 20, take the M5 southward towards Avonmouth and Bristol West. Leave the M5 at Avonmouth (junction 18) and follow the A4 exit to Bristol. After Approx 6 miles, take the A4 exit towards the city centre. Follow the A4 bearing slightly left onto the A4 Hotwells Rd. At the roundabout take the 1st exit onto Jacobs Wells Rd/B446. Continue up the hill and the car park will be on your left.

From South Wales on the M4 / M49

Once over the Second Severn Crossing on the M4, take junction 22 onto the M49 to Avonmouth (junction 18) and follow the A4 exit to Bristol. After Approx 6 miles, take the A4 exit towards the city centre. Follow the A4 bearing slightly left onto the A4 Hotwells Rd. At the roundabout take the 1st exit onto Jacobs Wells Rd/B446. Continue up the hill and the car park will be on your left.

From the South West on the M5

Leave the M5 at junction 18 (Avonmouth). Follow the A4 exit to Bristol. After Approx 6 miles, take the A4 exit towards the city centre. Follow the A4 bearing slightly left onto the A4 Hotwells Rd. At the roundabout take the 1st exit onto Jacobs Wells Rd/B446. Continue up the hill and the car park will be on your left.

From Bath on the A4 or Wells on the A37

On reaching Bristol follow signs for the City Centre. After the junction with the A4/A37 (The 3 Lamps) move into the left-hand lane turn left at the roundabout into York Road (A370). At the next roundabout take the second exit on Coronation Rd (A370). keeping the river on your right hand side. Continue on to Clift House Rd. Moving to the right hand lane and go under the Jessop underpass, merging onto Brunel Way/A3029. Continue onto Hotwells Rd/ City Centre / A4. Follow the A4 bearing slightly left onto the A4 Hotwells Rd. At the roundabout take the 1st exit onto Jacobs Wells Rd/B446. Continue up the hill and the car park will be on your left.

How to get to Engineers' House by Road and Rail

Engineers' House, The Promenade, Clifton Down, Clifton, Bristol, BS8 3NB

From London the M4 and from the Midlands & North on the M5

At M4 junction 20, take the M5 southward towards Avonmouth and Bristol West. Leave the M5 at Avonmouth (junction 18) and follow the A4 exit to Bristol. After Approx 5 miles at the traffic lights (just before the Clifton Suspension Bridge) take a sharp left on to Bridge Valley Road (sign posted Bristol Zoo). At the top of the hill take the 1st right to head up to Engineers' House, it will be about 500 metres along on the left hand side, on the corner of Percival road.

From South Wales on the M4 / M49

Once over the Second Severn Crossing on the M4, take junction 22 onto the M49 to Avonmouth (junction 18) and follow the A4 exit to Bristol. After Approx 5 miles at the traffic lights (just before the Clifton Suspension Bridge) take a sharp left on to Bridge Valley Road (sign posted Bristol Zoo). At the top of the hill take the 1st right to head up to Engineers' House, it will be about 500 metres along on the left hand side, on the corner of Percival road.

From the South West on the M5

Leave the M5 at junction 19 (Gordano Services). Take the A369 to Bristol West & Clifton. After Approx. 4 miles, turn left at the sign for Clifton (toll – which is £1) Cross the Suspension Bridge, take the next left and the then bare left and Engineers' House will be about 100 metres along on the right hand side.

From Bath on the A4 or Wells on the A37

On reaching Bristol follow signs for the City Centre. After the junction with the A4/A37 (The 3 Lamps) move into the left-hand lane turn left at the roundabout into York Road (A370). At the next roundabout take the second exit on Coronation Rd (A370). Follow signs for A4 Avonmouth. As you pass under the Suspension Bridge, bare right for Bridge Valley Road (sign posted Bristol Zoo). At the top of the hill take the 1st right to head up to Engineers' House, it will be about 500 metres along on the left hand side, on the corner of Percival road.

By Bus or Taxi from Temple Meads Station

Bristol Temple Meads Train Station is close to the City Centre and is only a short bus or taxi journey away from Engineers' House. From the taxi rank outside of the station, the average taxi fare will be around £8 - £10. Alternatively if you are travelling by bus, the number 8 runs every 10 minutes from the station and travels through via the Centre, Park Street and Clifton Triangle and stops directly outside of Engineers' House. The bus fare is £2 each way. Please find the number 8 bus departure times from Engineers' House on page 6.

Additional Information:

Our onsite car parking spaces are predominately reserved for event speakers, organisers, trainers and disabled attendees. Parking permits for the surrounding streets are also available from the venue. Should this be required on your event date, our car parking attendant will advise you upon your arrival to Engineers' House. All parking permits require a £20 refundable deposit and are collected from our reception, permits must be returned daily.

****Engineers' House cannot guarantee parking for all delegates. There is also 5 hour Pay & Display parking available around the venue.**



Bus



MetroBus

P+R

Park & Ride



Rail



Walk



Cycle



Drive



Motorcycle



Journey
Planning

**A4 to M5
J18**

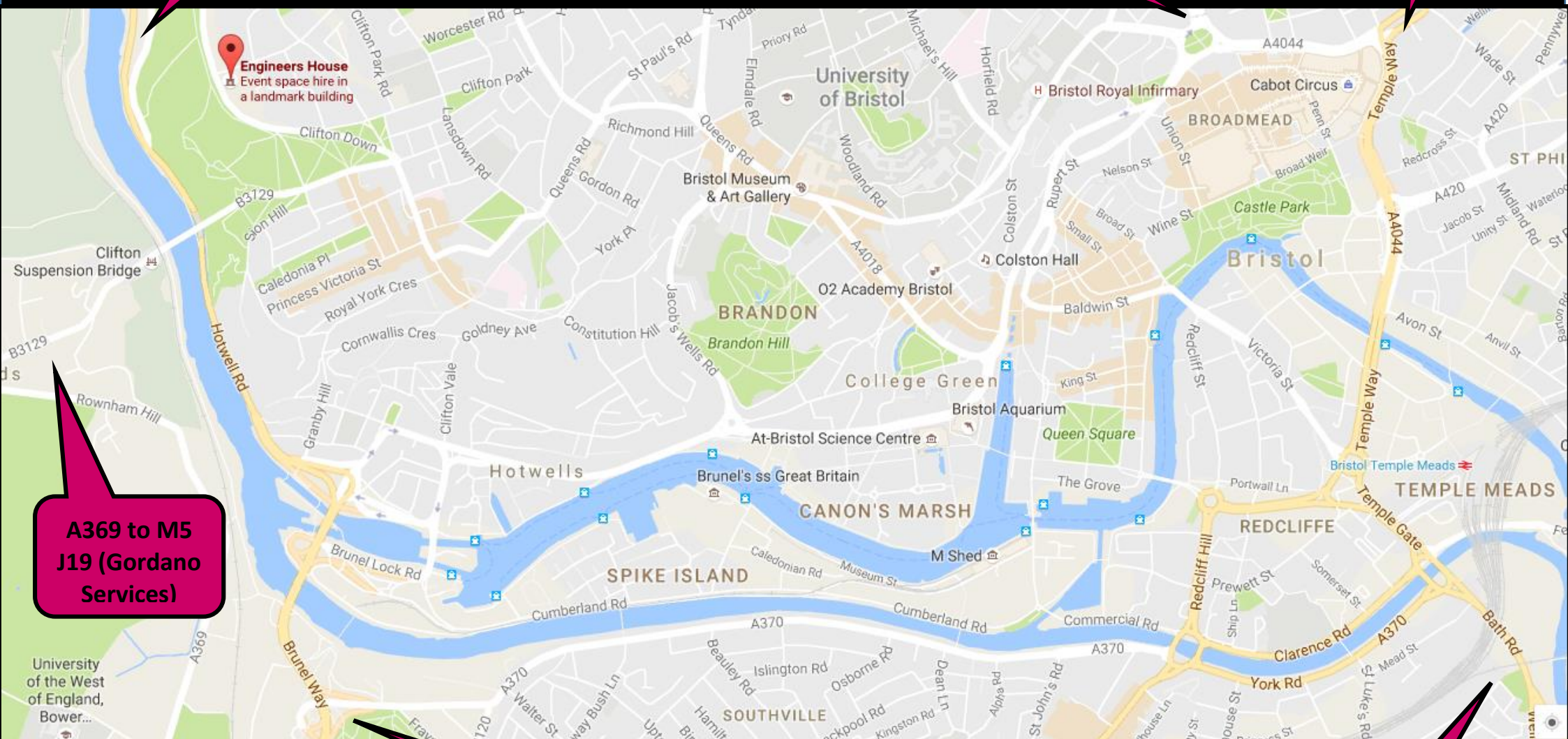
**A38 to M5
J16 & M4
J20**

**M32 to
J19**

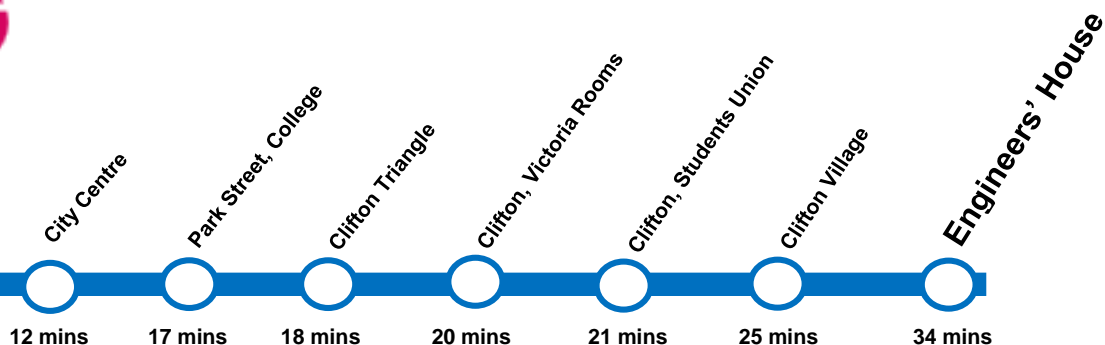
**A369 to M5
J19 (Gordano
Services)**

**A370 to A38
Taunton and
the West**

**A4 to
Bath**



**Bus Stop is
right of
Temple Meads
as you walk
out the exit**



8

Temple Meads Station & City Centre to Engineers' House – Via City Centre, Park Street, Students Union and Clifton Village

Mondays to Fridays

0705	0725	0745	0805	0820	0830
0845	0855	0910	0920	0930	

Then every 10 minutes until

1450	1500	1510	1520	1530	
------	------	------	------	------	--

Then every 10 minutes until

1600	1615	1625	1635	1650	1700
1710	1720	1735	1745	1755	1810
1820	1830	1845	1900	1915	1930
1945	2000	2030	2100		

Then every 30 minutes until 23.30

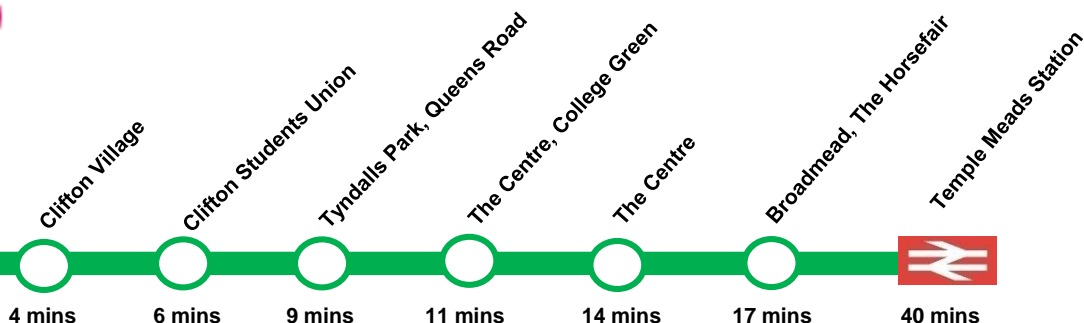
Saturdays

0700	0730	0800	0817	0840	0900
0915	0927	0940			

Please refer to timetables on the bus stop outside of Temple Meads for times outside of these times

For Sunday timetables, please refer to timetable on the bus stop outside of Temple Meads or the First Group website below

Bus Stop is
left of
Engineers'
House as you
leave



8

Engineers' House to City Centre & Temple Meads Station – Via Clifton, Tyndalls Park, The Centre and Broadmead

Mondays to Fridays

0546	0626	0647	0707	0723	0735
0745	0757	0811	0822	0832	0842
0857	0907	0922	0932	0946	0954
1003	1013	1023	1033	1043	1053
1103	1113	1123	1133	1143	1153
1203	1213	1223	1233	1243	1253
1303	1313	1323	1333	1343	1353
1403	1413	1423	1433	1443	1453
1503	1513	1523	1533	1543	1555
1606	1616	1626	1636	1652	1702
1712	1728	1738	1748	1758	1813
1823	1832	1844	1853	1902	1918

Runs up until 0024 Monday – Friday

Saturdays

0544	0624	0656	0726	0757	0827
0844	0907	0927	0943	0958	1013
1021	1032	1043	1053	1102	1113
1123	1133	1143	1153	1203	1213
1223	1233	1243	1253	1303	1313
1323	1333	1343	1353	1403	1413
1423	1433	1443	1453	1503	1513
1523	1533	1543	1554	1604	1614
1614	1624	1634	1644	1654	1704
1714	1724	1734	1744	1754	1804
1814	1823	1833	1848	1903	1917

Runs up until 0024 on Saturdays

For Sunday timetables, please refer to timetable on the bus stop outside of Engineers' House

8 9 72 Route Map



To travel to Engineers' House by bus from Temple Meads, please use the number 8 service



Bus



MetroBus

P + R

Park & Ride



Rail



Walk



Cycle



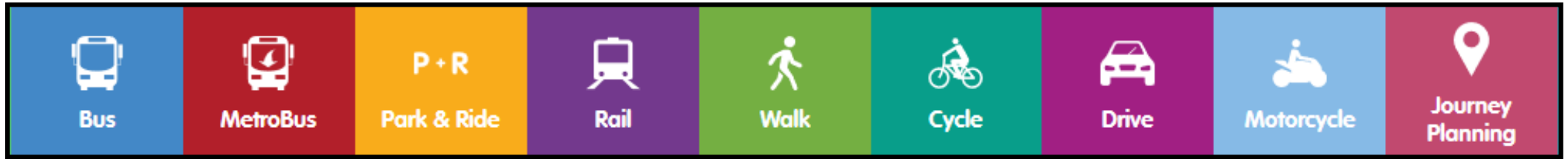
Drive



Motorcycle



Journey Planning



Engineers' House Bus Services

travelwest 

Plan your next journey to Engineers' House by clicking on the **travelwest** logo above or by typing www.travelwest.info into your web browser.

There are two buses which stop directly outside of Engineers' House (**Percival Stop**) connecting to various areas of Bristol. These are the **number 8** from Temple Meads Train Station and the **505** which can be caught from the Long Ashton Park & Ride and from outside of Southmead Hospital running regularly throughout the day. Further information such as timetables and live journey times can be found on the **travelwest** website.



Pay & Display Parking Area Map

Pay & Display is available in the black dotted & yellow highlighted areas show on the map to the left.

If you are attending a half day event or are only here for a short amount of time, there is the option for up to 5 Hour Pay & Display just a short walk away from Engineers' House

Payment can be made by the easy to use Ringo App, by text or with cash at the machine within seconds.

How to get to Engineers' House from Bristol Airport

By Taxi

Taking a taxi to and from Bristol Airport is quick and easy with Arrow Cars, our dedicated on-site taxi and minibus service.

Arrow Cars operate a high quality, modern fleet of vehicles at competitive prices. They are available 24 hours a day, 365 days a year for journeys to and from Bristol Airport.

Customers can enjoy:

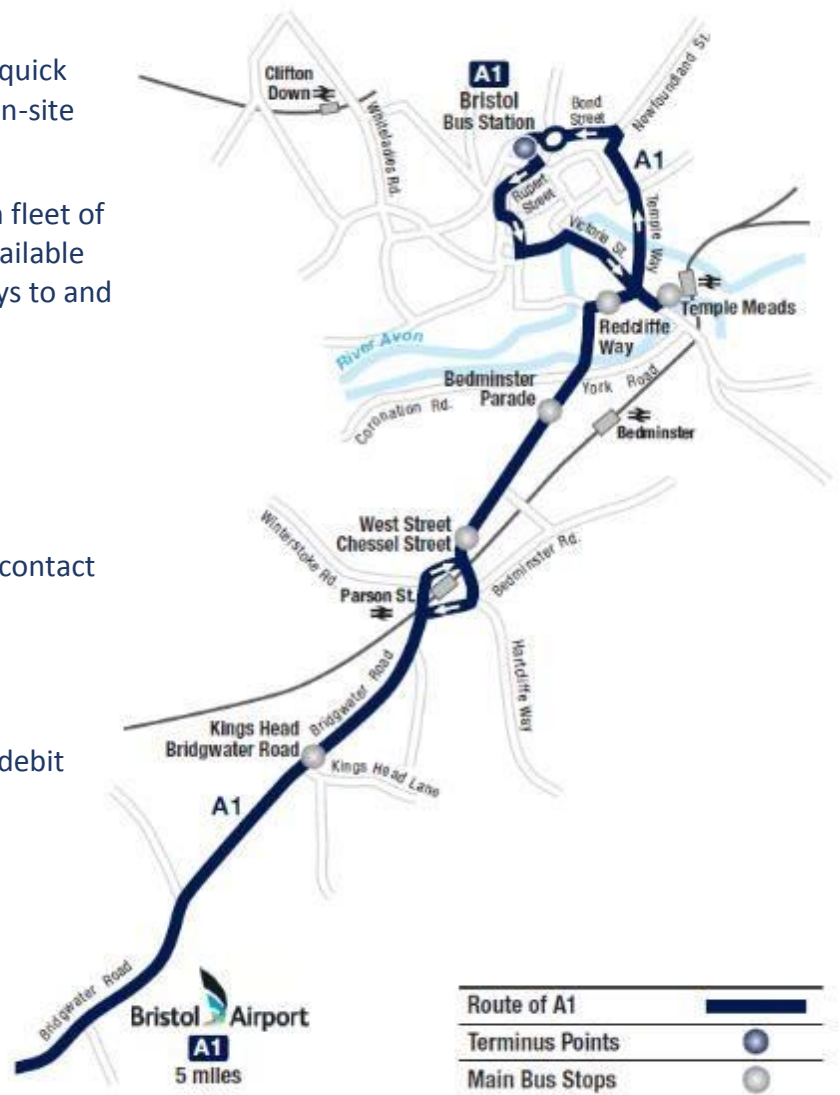
- Free SMS journey updates
- Real time vehicle tracking
- Self-service check in terminals
- Driver connect, allowing customers to contact their driver directly if required

Book now

Payment can be made by cash, credit and debit card at the office or by card on-line.

Office location

The booking office is located opposite the airport terminal at the arrivals end of the building, is open 24/7 and can be contacted on 01275 475000.



Taxis for arriving passengers

Taxis are conveniently located outside the terminal building, simply visit the booking office, where you will be quoted the fixed fare to your destination and you will be allocated a vehicle.

By Airport Flyer & Bus

Fast, frequent and value for money

The Airport Flyer Express is the only bus service that gets you from Bristol Airport to Bristol Temple Meads station.

How much does it cost? £11 return from the Airport to Temple Meads Station (return ticket valid for 1 month)

Once you have arrived at the station, you will already be on the correct bus stop for the number 8 bus which stops directly outside of Engineers' House, the buses depart from the station around every 10 minutes. The fare is £2 each way