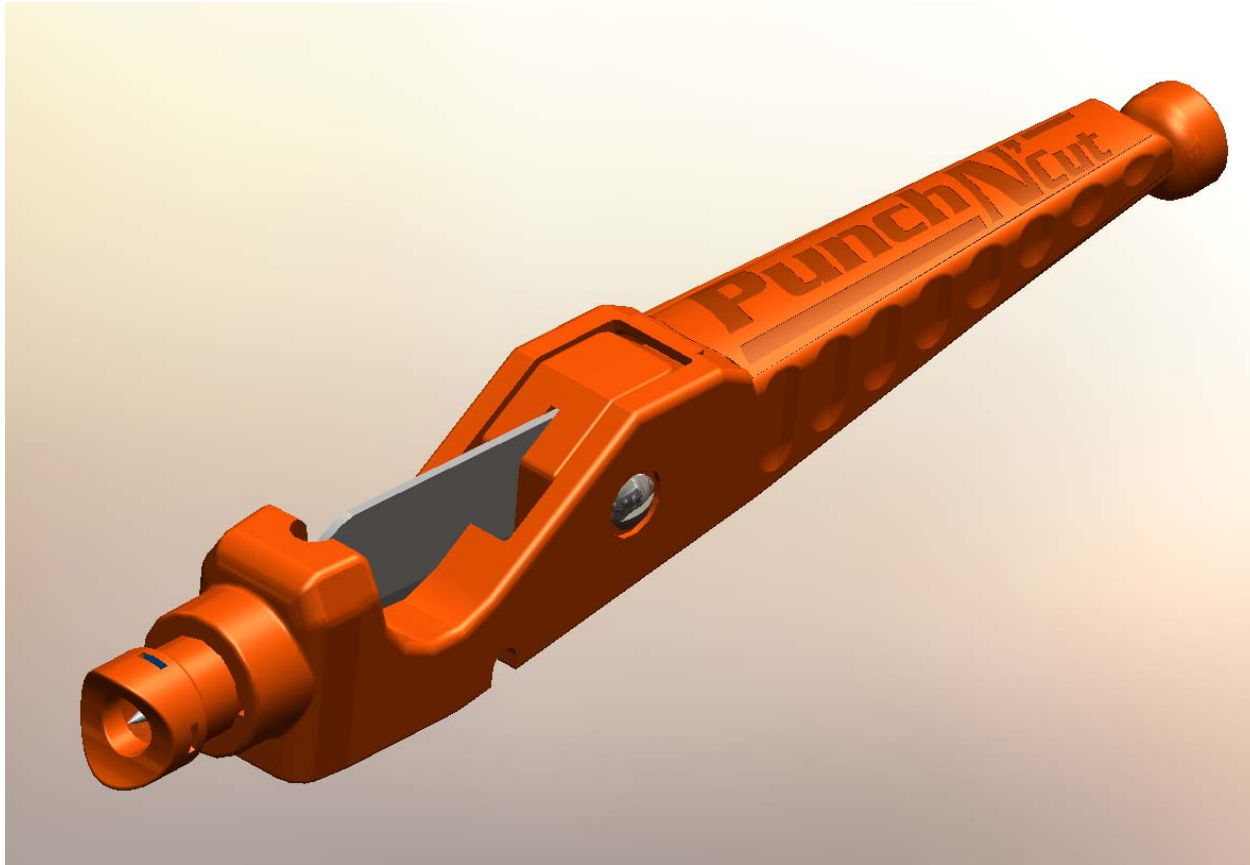
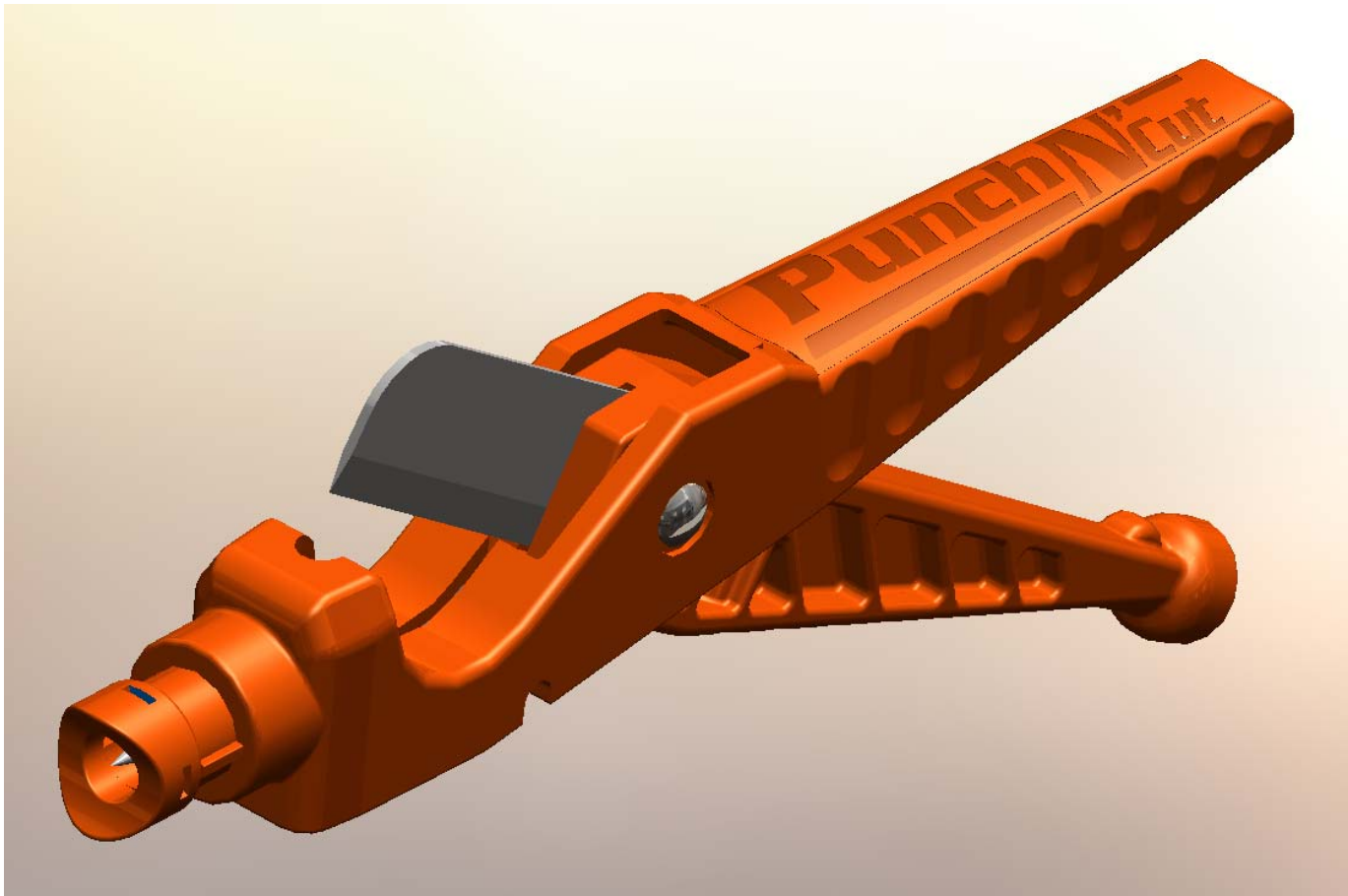




# ***Punch N' Cut***

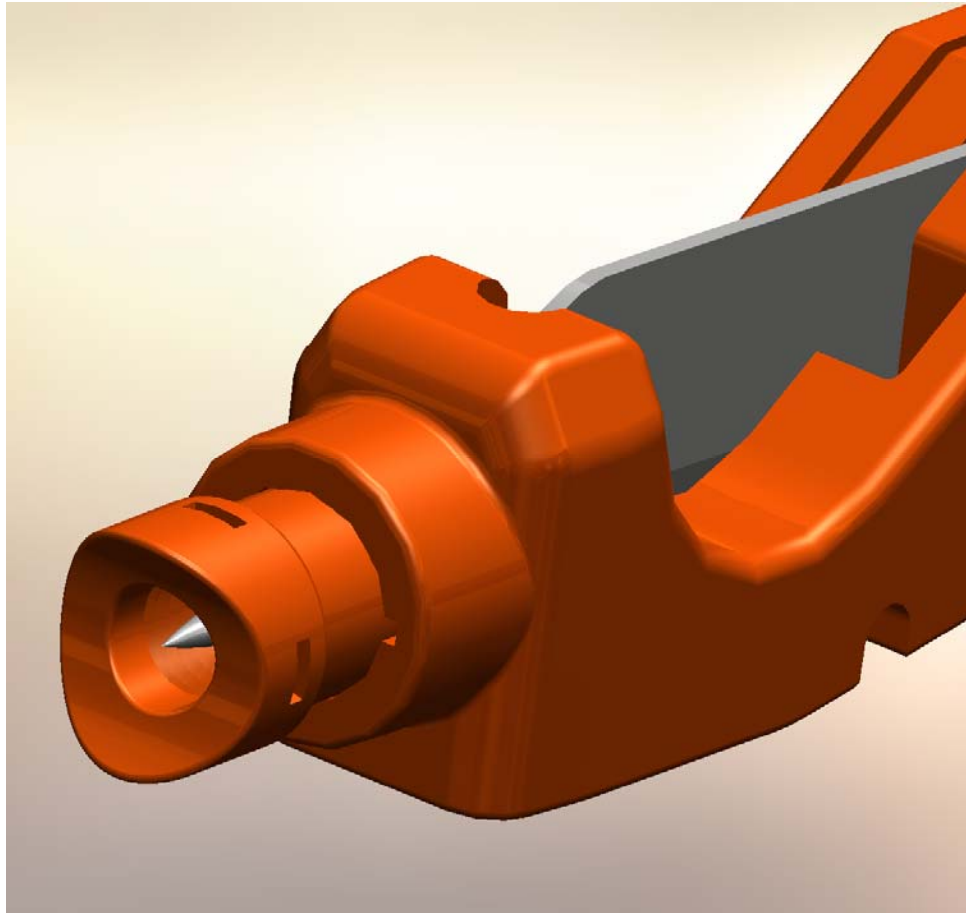


THE INFORMATION CONTAINED IN THIS DOCUMENT IS THE SOLE PROPERTY OF ECM INDUSTRIES AND/OR MICHAEL MYERS. ANY REPRODUCTION IN PART OR AS A WHOLE WITHOUT THE WRITTEN PERMISSION OF ECM INDUSTRIES AND/OR MICHAEL MYERS IS PROHIBITED.



## Punch N' Cut open 30 degrees tubing and pipe cutter feature

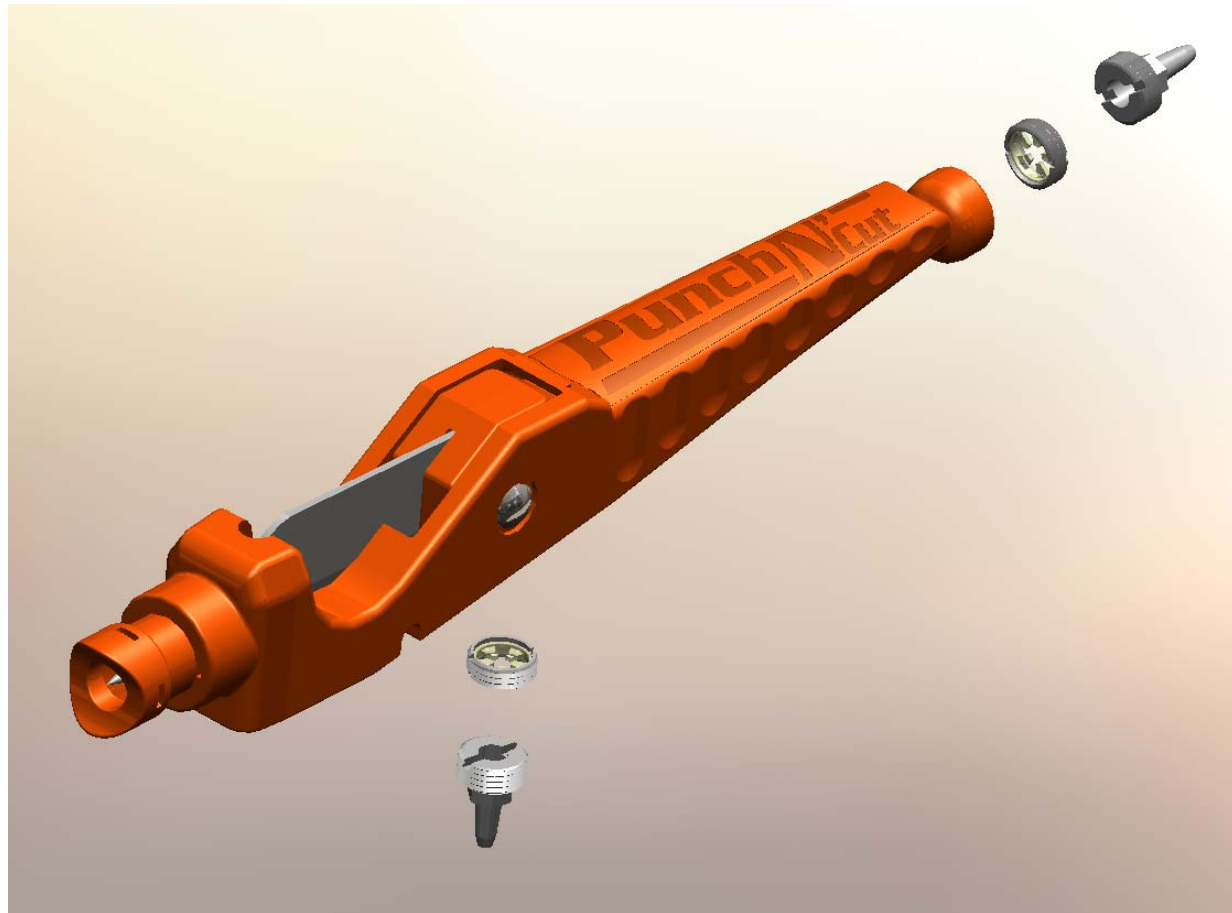
THE INFORMATION CONTAINED IN THIS DOCUMENT IS THE SOLE PROPERTY OF ECM INDUSTRIES AND/OR MICHAEL MYERS. ANY REPRODUCTION IN PART OR AS A WHOLE WITHOUT THE WRITTEN PERMISSION OF ECM INDUSTRIES AND/OR MICHAEL MYERS IS PROHIBITED.



## Punch N' Cut

### front spring loaded tubing rotational crescent and punch pin

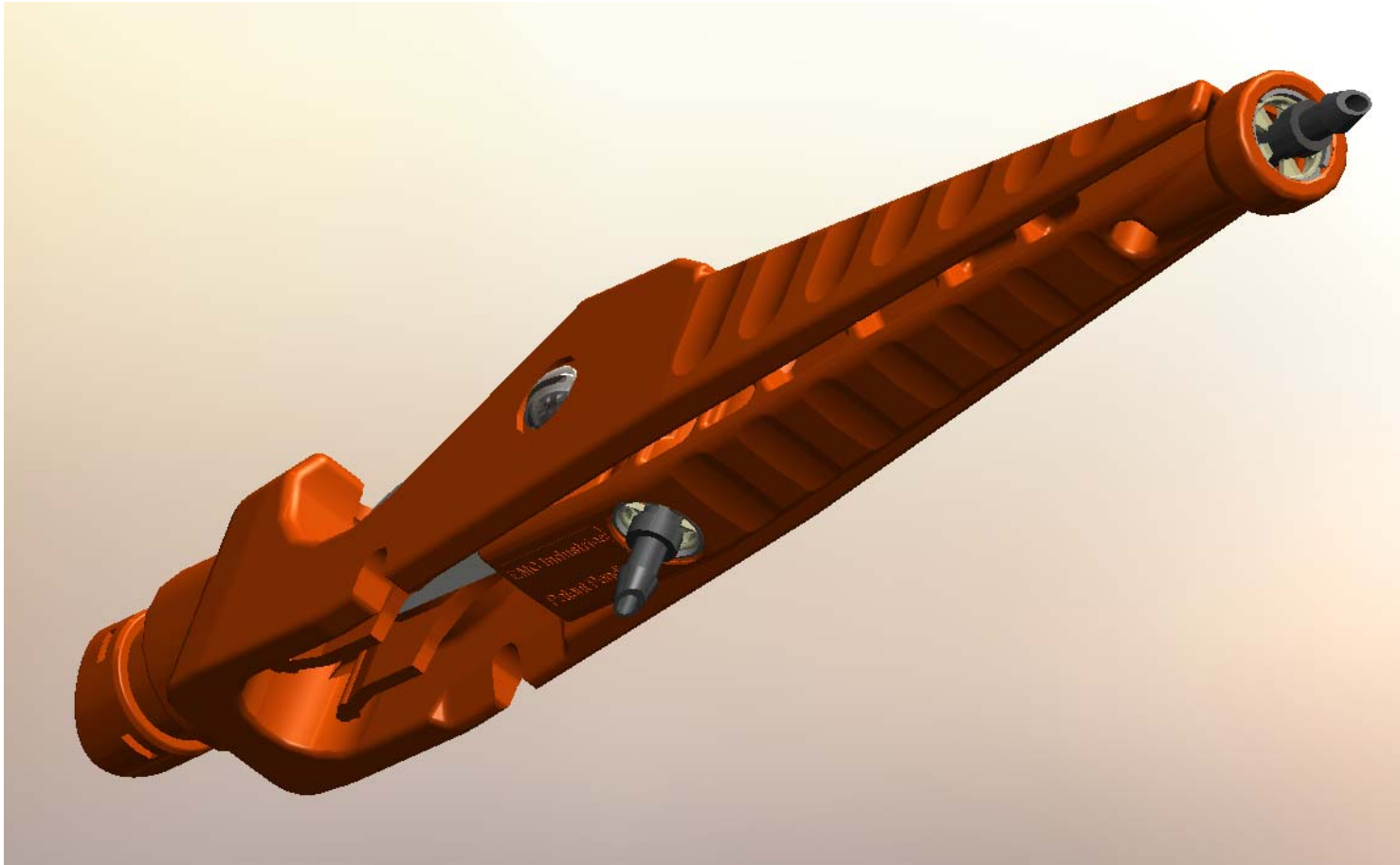
THE INFORMATION CONTAINED IN THIS DOCUMENT IS THE SOLE PROPERTY OF ECM INDUSTRIES AND/OR MICHAEL MYERS. ANY REPRODUCTION IN PART OR AS A WHOLE WITHOUT THE WRITTEN PERMISSION OF ECM INDUSTRIES AND/OR MICHAEL MYERS IS PROHIBITED.



## Punch N' Cut

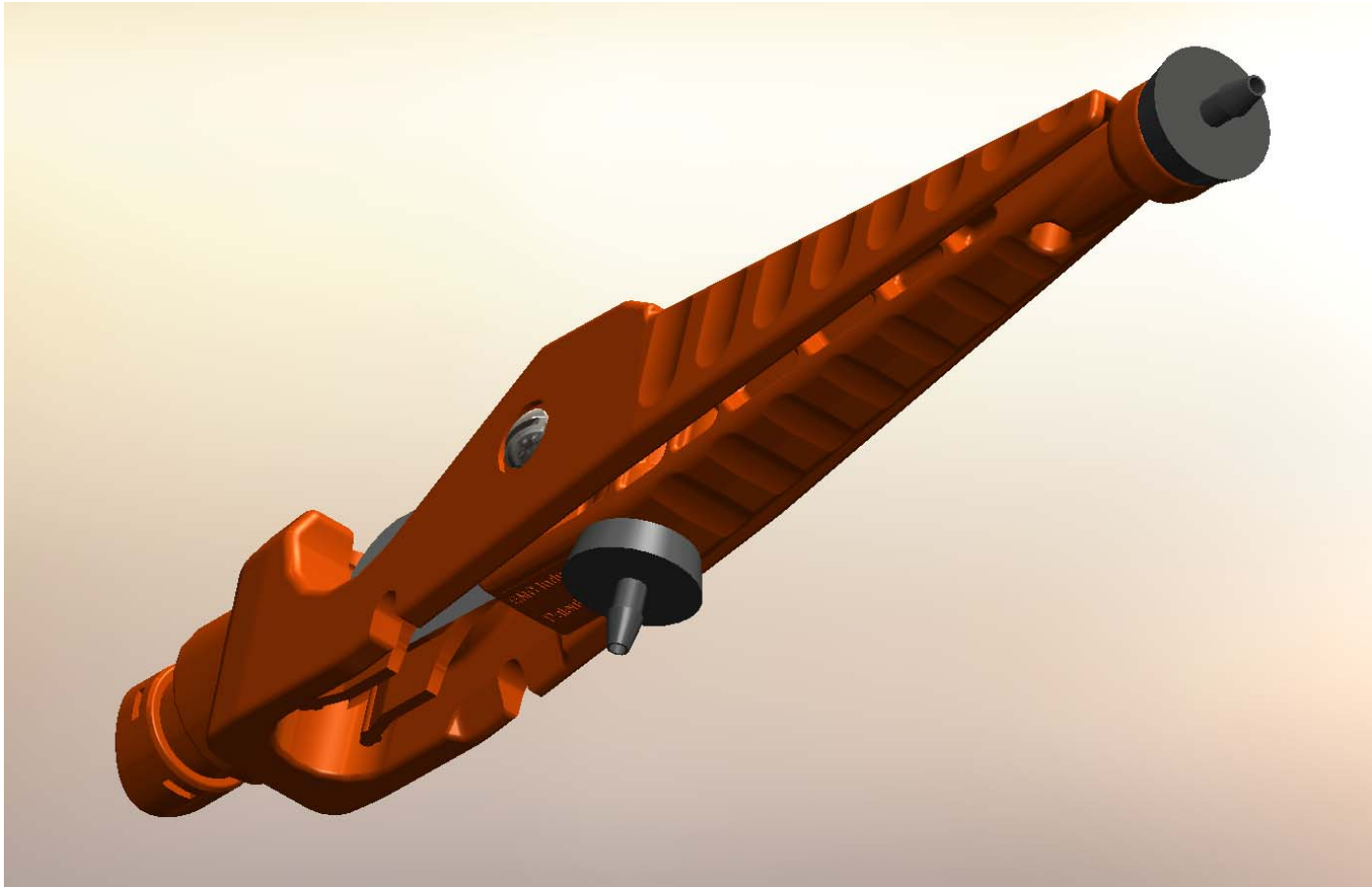
### barb connector holder or pellet punch pin options

THE INFORMATION CONTAINED IN THIS DOCUMENT IS THE SOLE PROPERTY OF ECM INDUSTRIES AND/OR MICHAEL MYERS. ANY REPRODUCTION IN PART OR AS A WHOLE WITHOUT THE WRITTEN PERMISSION OF ECM INDUSTRIES AND/OR MICHAEL MYERS IS PROHIBITED.



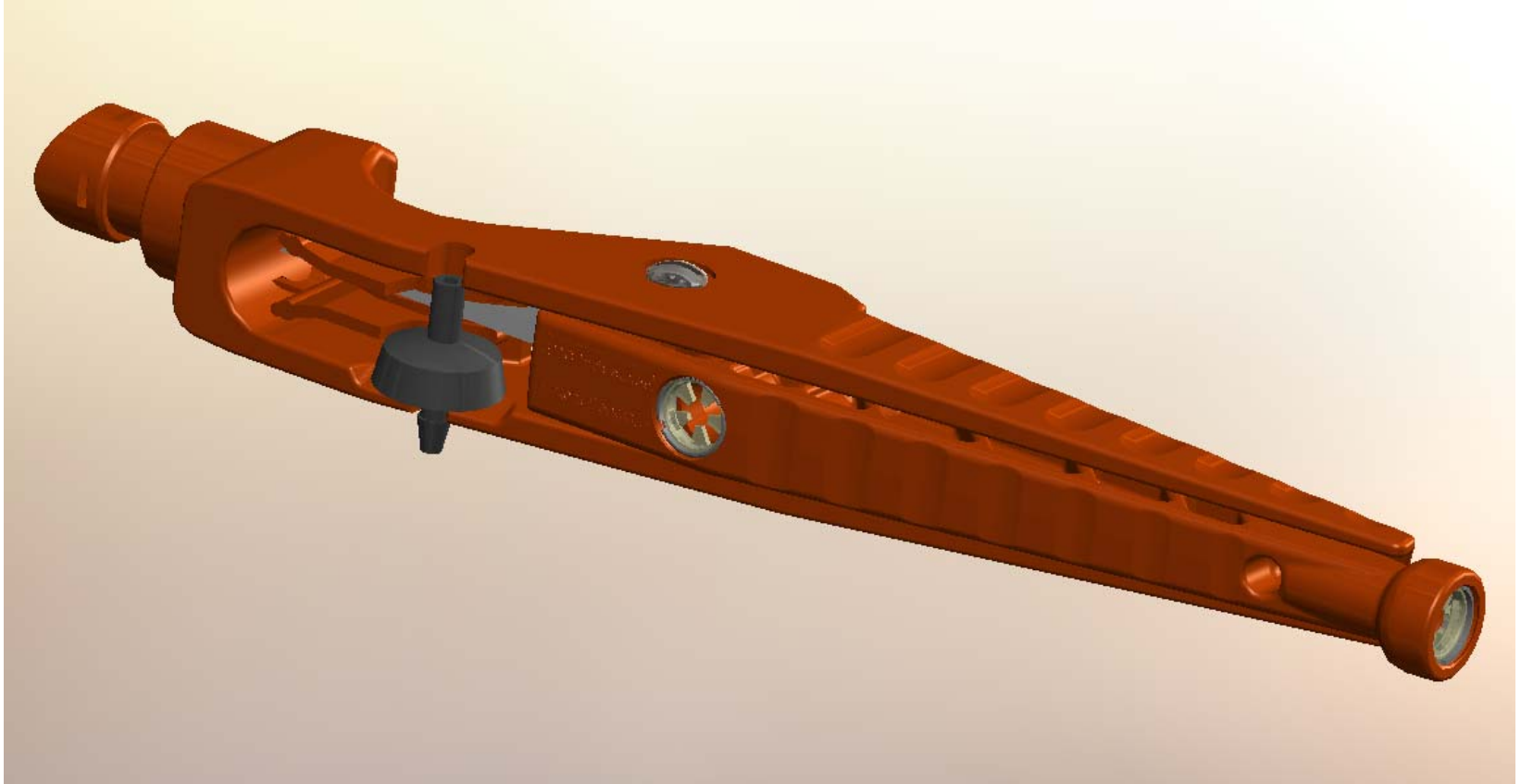
## Punch N' Cut barb connector insertion features

THE INFORMATION CONTAINED IN THIS DOCUMENT IS THE SOLE PROPERTY OF ECM INDUSTRIES AND/OR MICHAEL MYERS. ANY REPRODUCTION IN PART OR AS A WHOLE WITHOUT THE WRITTEN PERMISSION OF ECM INDUSTRIES AND/OR MICHAEL MYERS IS PROHIBITED.



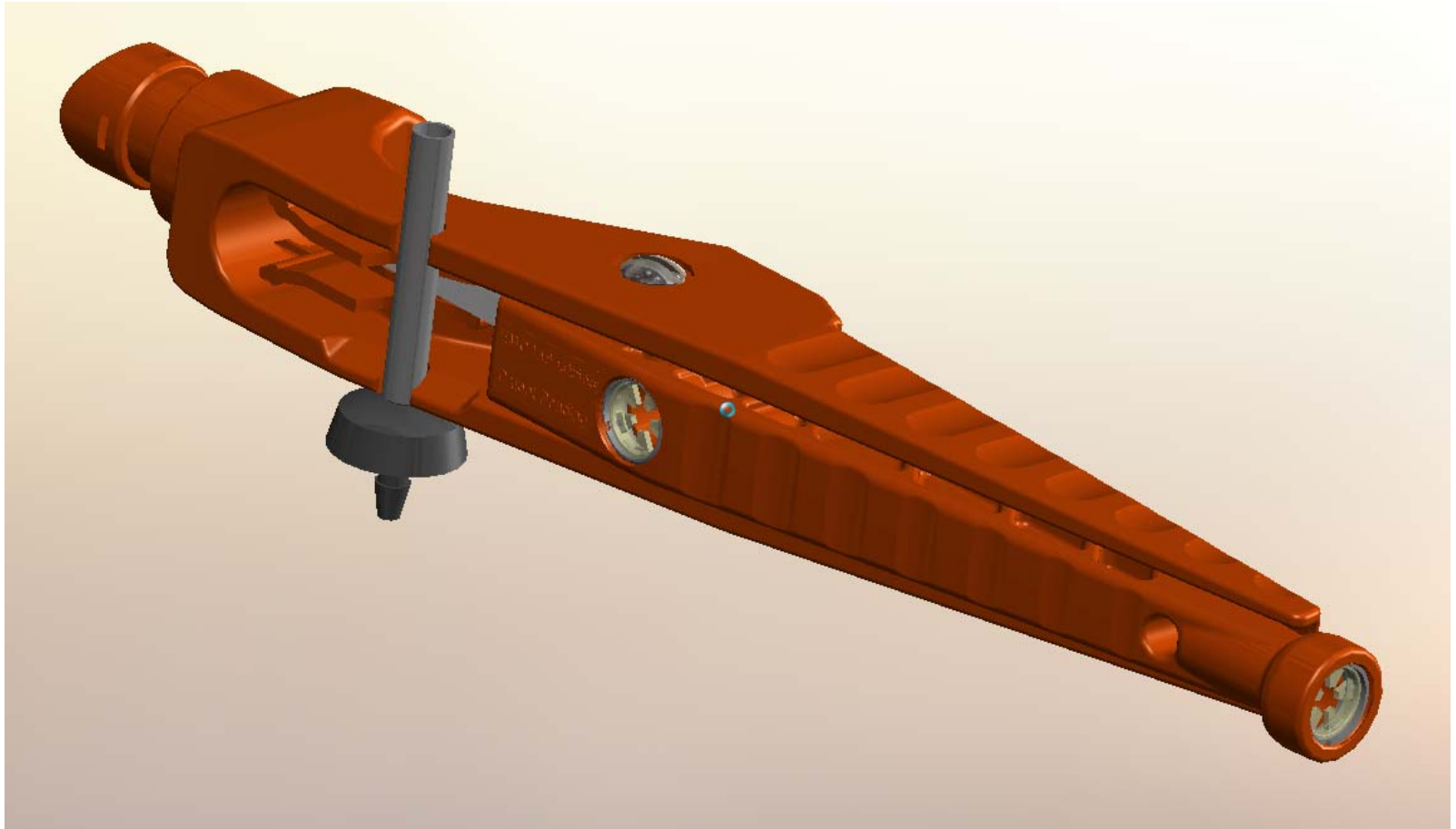
## Punch N' Cut emitter insertion features

THE INFORMATION CONTAINED IN THIS DOCUMENT IS THE SOLE PROPERTY OF ECM INDUSTRIES AND/OR MICHAEL MYERS. ANY REPRODUCTION IN PART OR AS A WHOLE WITHOUT THE WRITTEN PERMISSION OF ECM INDUSTRIES AND/OR MICHAEL MYERS IS PROHIBITED.



## Punch N' Cut barb connector or emitter removal feature

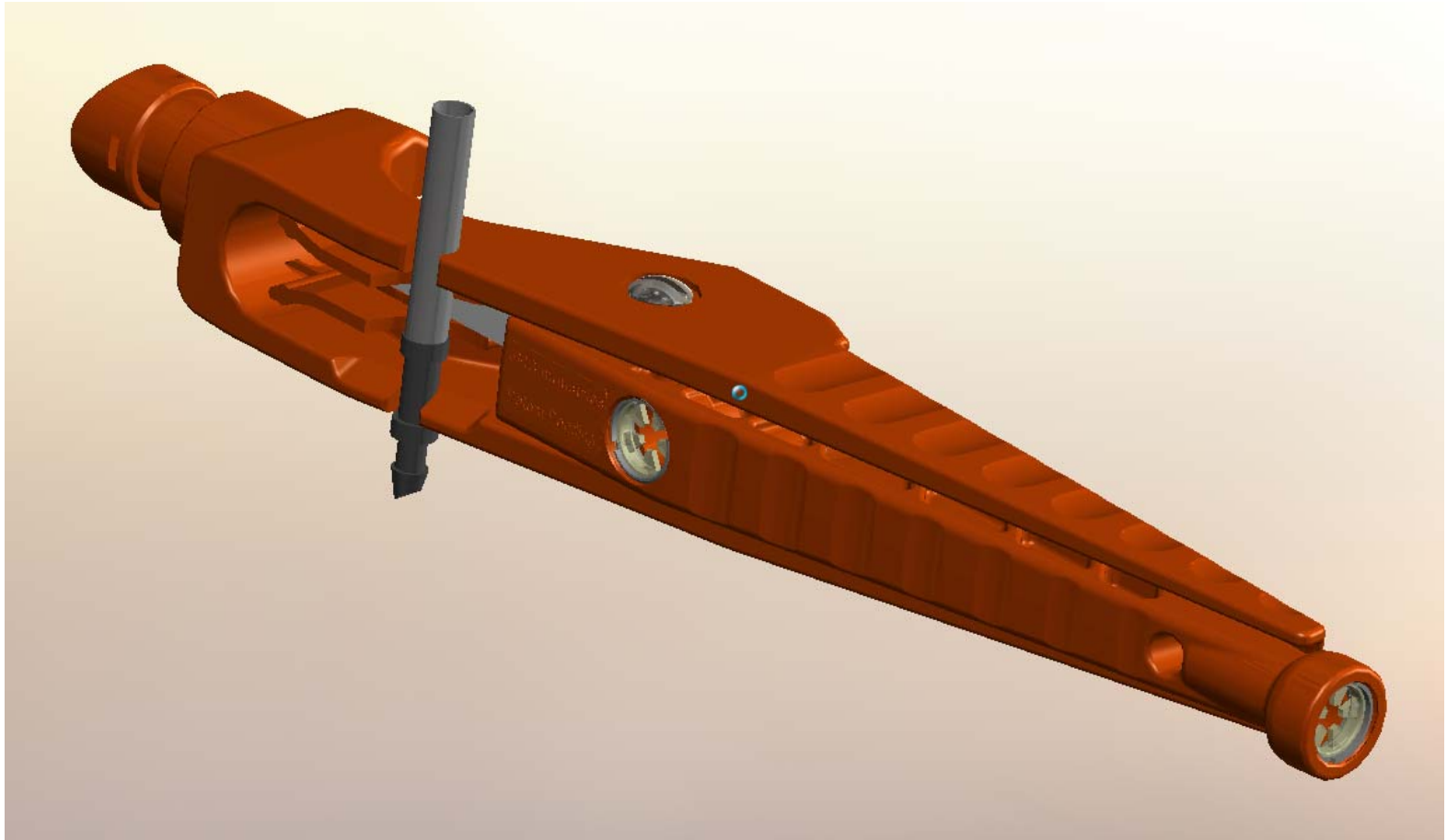
THE INFORMATION CONTAINED IN THIS DOCUMENT IS THE SOLE PROPERTY OF ECM INDUSTRIES AND/OR MICHAEL MYERS. ANY REPRODUCTION IN PART OR AS A WHOLE WITHOUT THE WRITTEN PERMISSION OF ECM INDUSTRIES AND/OR MICHAEL MYERS IS PROHIBITED.



## Punch N' Cut emitter with ¼" tubing installation feature

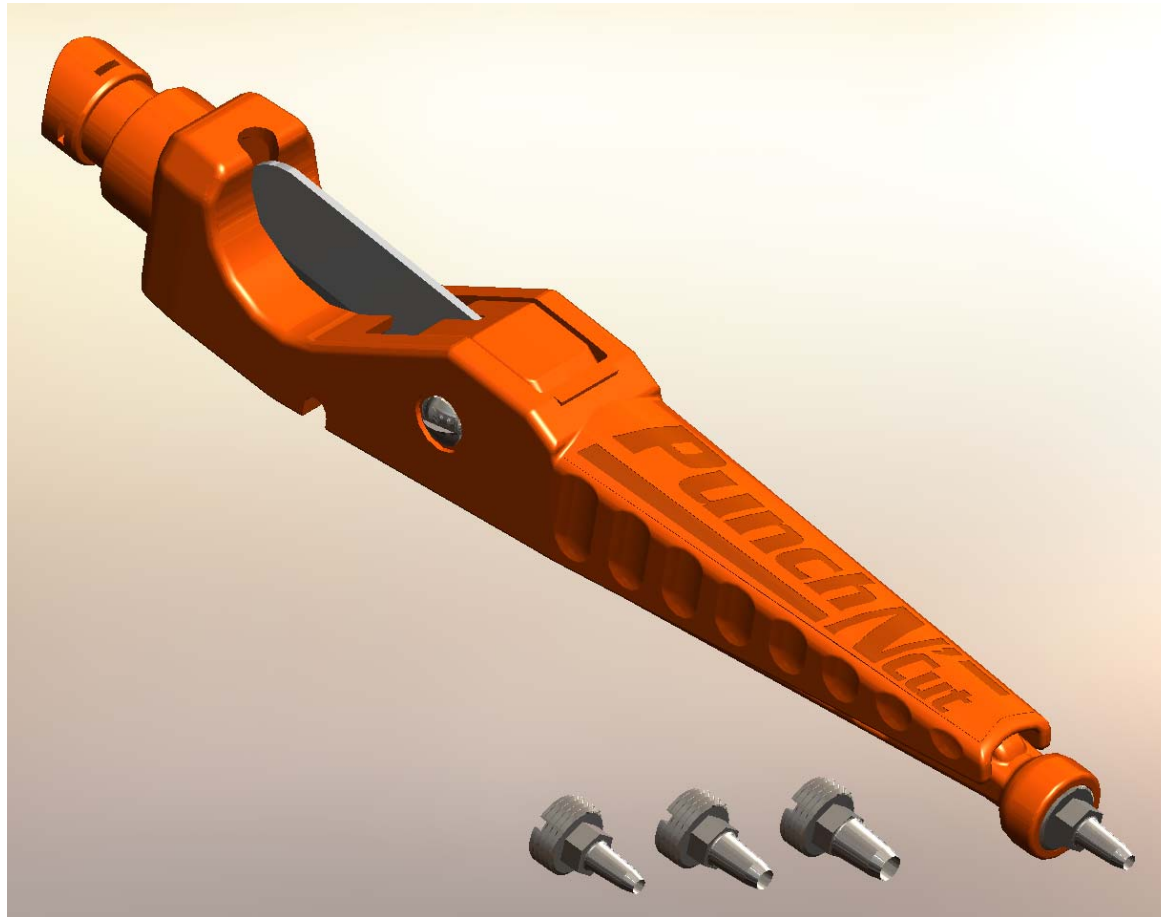
THE INFORMATION CONTAINED IN THIS DOCUMENT IS THE SOLE PROPERTY OF ECM INDUSTRIES AND/OR MICHAEL MYERS. ANY REPRODUCTION IN PART OR AS A WHOLE WITHOUT THE WRITTEN PERMISSION OF ECM INDUSTRIES AND/OR MICHAEL MYERS IS PROHIBITED.





Punch N' Cut  
barb connector with ¼" tubing installation feature

THE INFORMATION CONTAINED IN THIS DOCUMENT IS THE SOLE PROPERTY OF ECM INDUSTRIES AND/OR MICHAEL MYERS. ANY REPRODUCTION IN PART OR AS A WHOLE WITHOUT THE WRITTEN PERMISSION OF ECM INDUSTRIES AND/OR MICHAEL MYERS IS PROHIBITED.



Punch N' Cut  
pellet punch pin feature  
(3mm, 4mm, and 5mm)

THE INFORMATION CONTAINED IN THIS DOCUMENT IS THE SOLE PROPERTY OF ECM INDUSTRIES AND/OR MICHAEL MYERS. ANY REPRODUCTION IN PART OR AS A WHOLE WITHOUT THE WRITTEN PERMISSION OF ECM INDUSTRIES AND/OR MICHAEL MYERS IS PROHIBITED.



Punch N' Cut open 45 degrees  
spare pellet punch pin storage feature

THE INFORMATION CONTAINED IN THIS DOCUMENT IS THE SOLE PROPERTY OF ECM INDUSTRIES AND/OR MICHAEL MYERS. ANY REPRODUCTION IN PART OR AS A WHOLE WITHOUT THE WRITTEN PERMISSION OF ECM INDUSTRIES AND/OR MICHAEL MYERS IS PROHIBITED.