

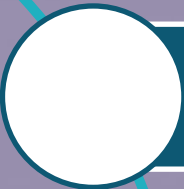


COORDINATED PRODUCTION
FOR BETTER RESOURCE EFFICIENCY

IT Integration The Challenge and the CoPro Solution

Udo Enste, LeiKon GmbH

www.spire2030.eu/copro

A white circle with a teal outline, connected by a teal line to the other icons.

Thesis: Model based applications provide an important contribution to optimised plant coordination solutions

A white circle with a teal outline, connected by a teal line to the other icons.

Problem: Still a gap to integrate offline evaluated models into an online production IT System environment

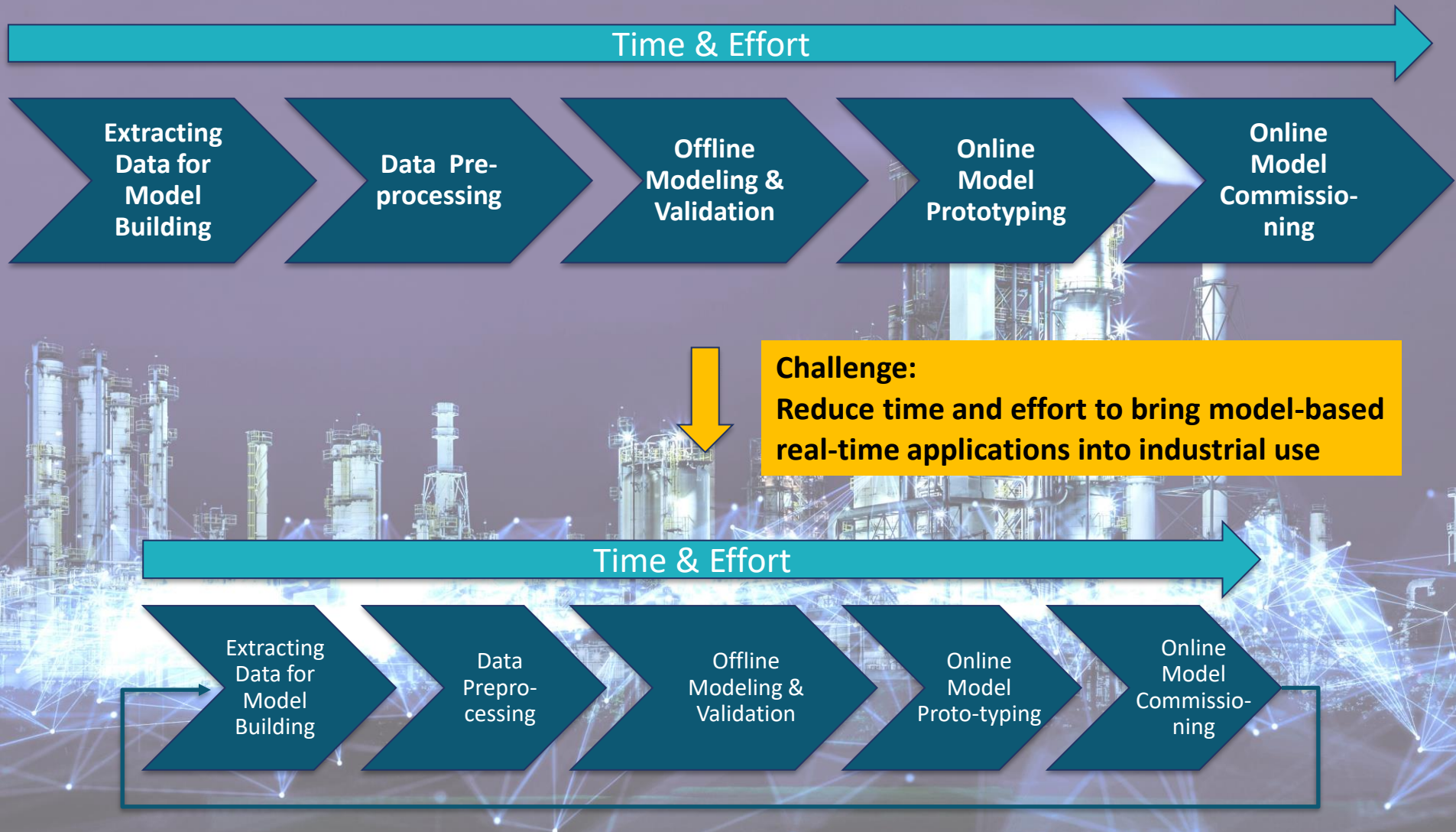
A white circle with a teal outline, connected by a teal line to the other icons.

Challenge: Reduce obstacles to realise model-based real-time solutions for plant optimisation and resource efficiency in process industry

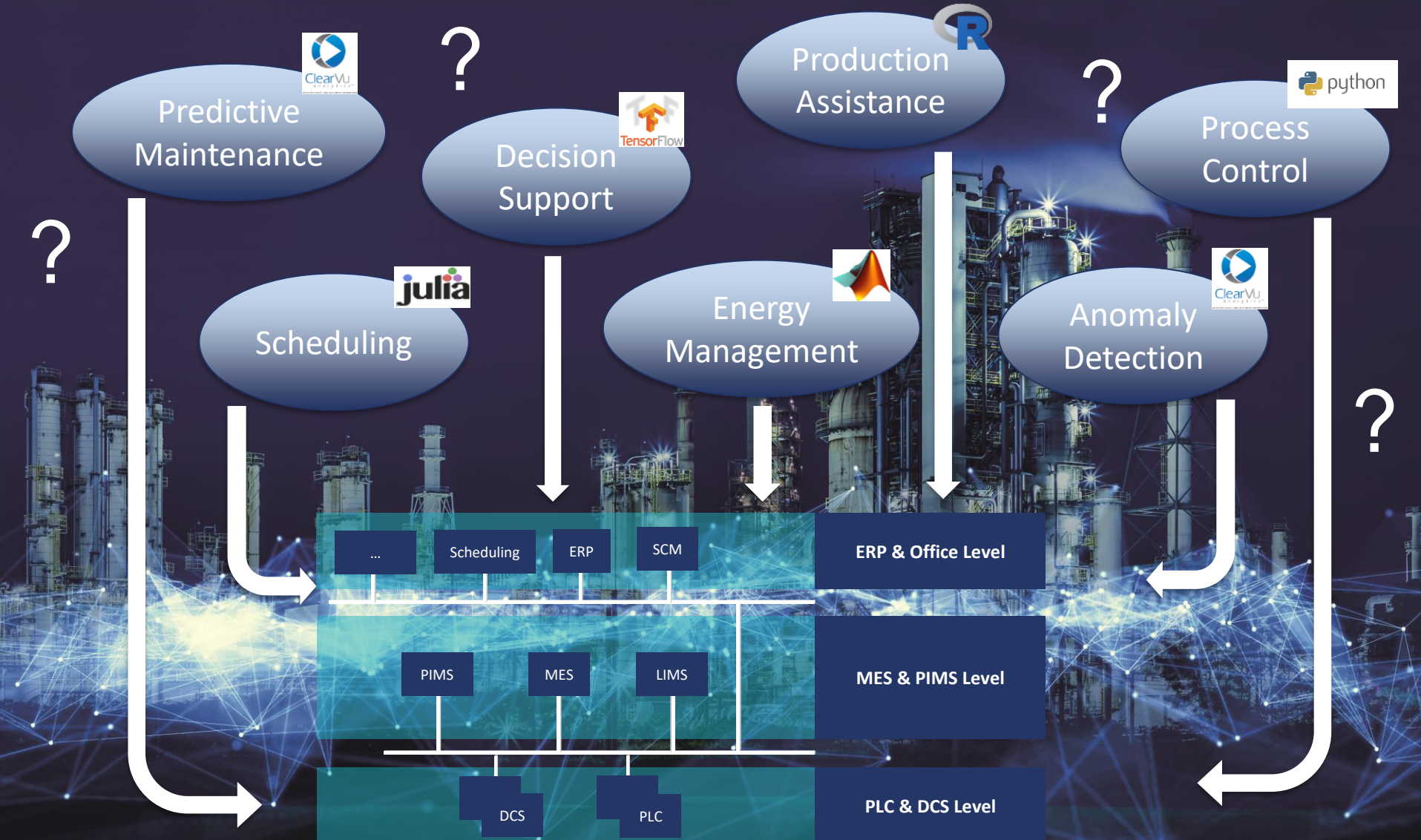
A white circle with a teal outline, connected by a teal line to the other icons.

Approach: IT Solution for model integration and data orchestration of distributed real-time applications in process industries incl. model management

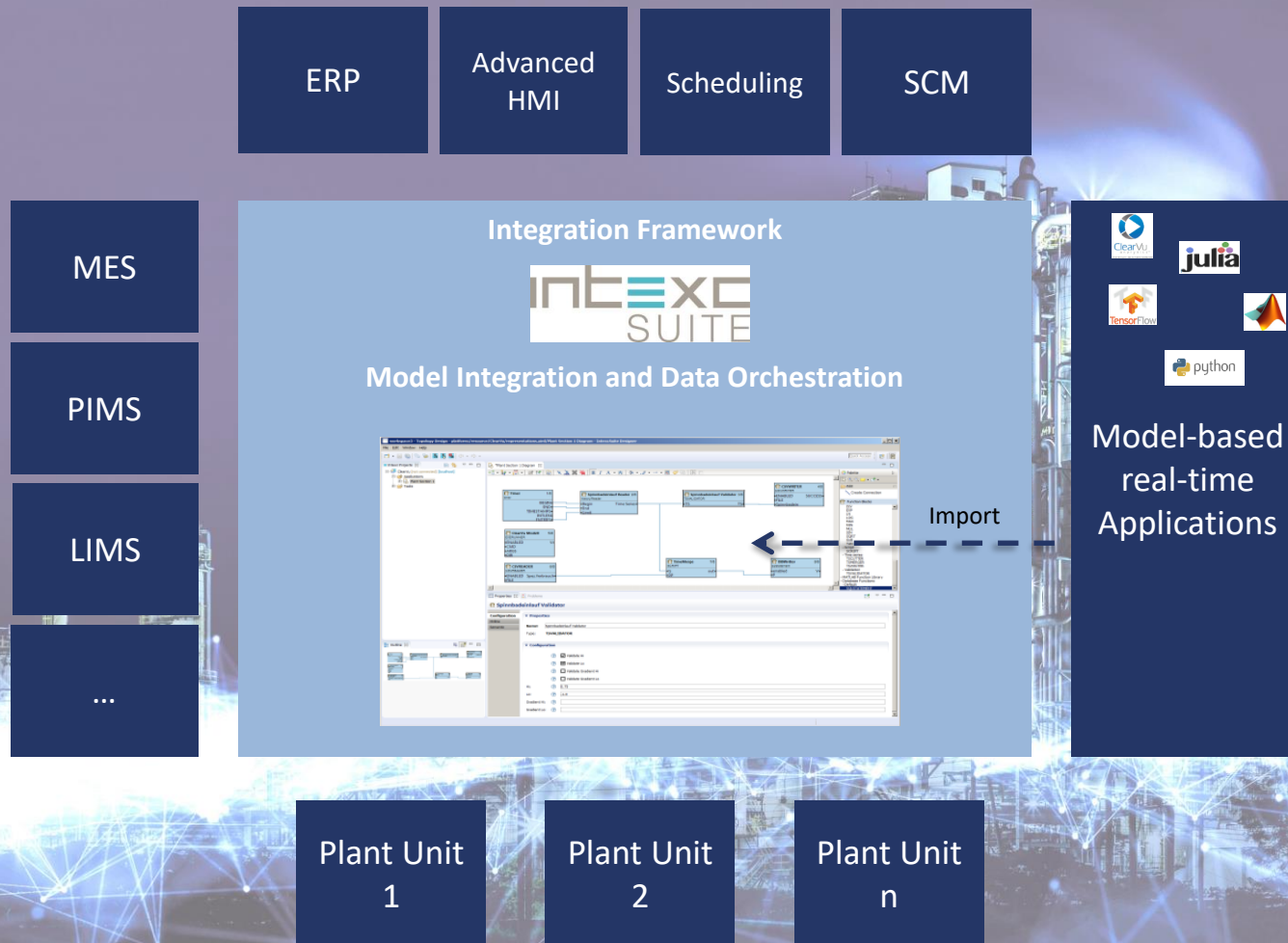
IT Integration – The Challenge



IT Integration – The Challenge



IT Integration – The Solution



IT Integration – The Solution

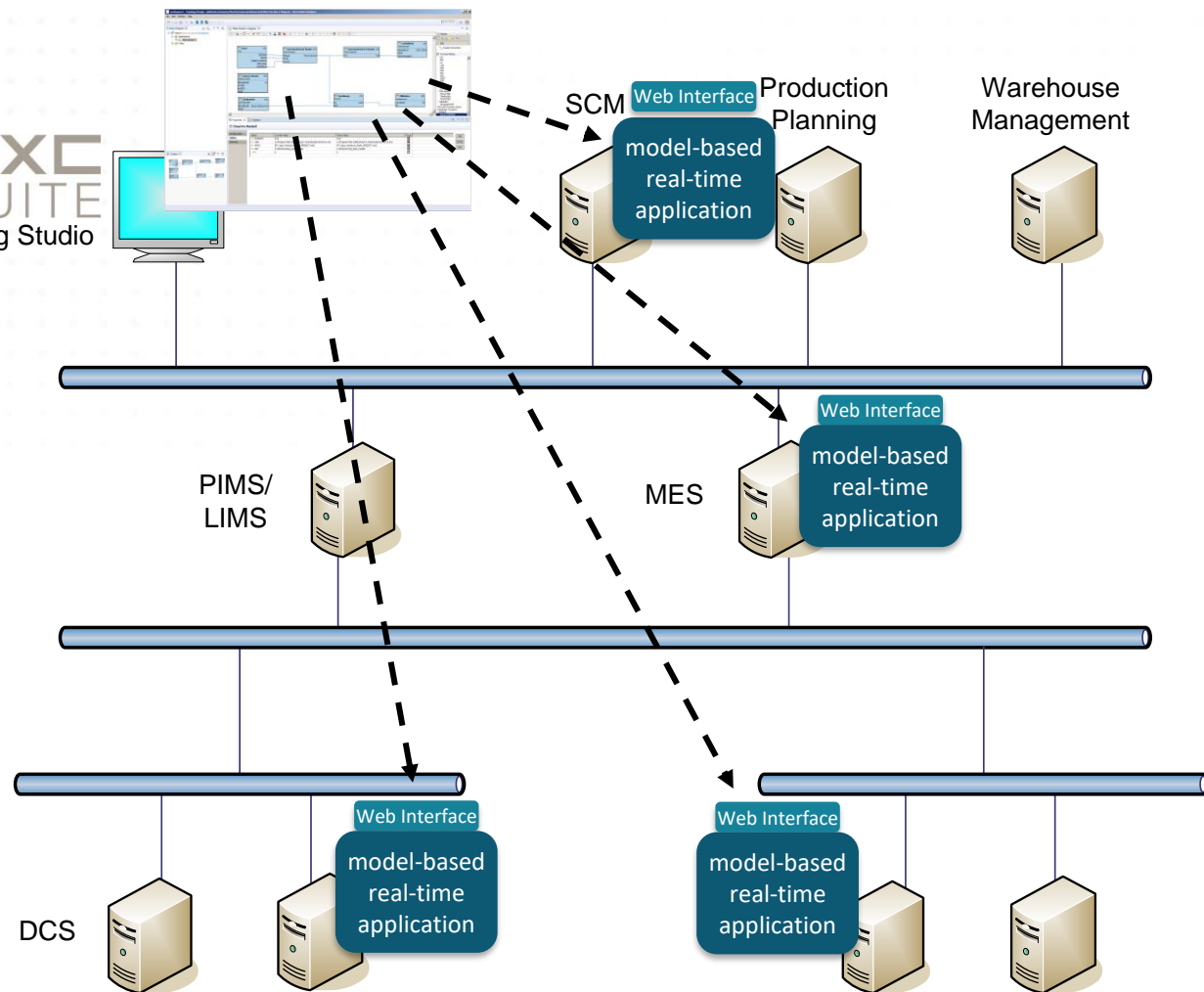
Engineering Suite

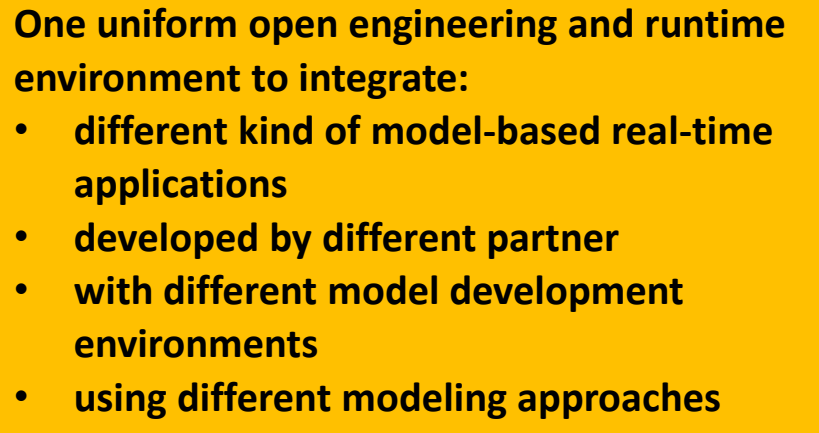
int³XC
SUITE
Engineering Studio

Flexible Deployment of runtime engines

Requirements:

- Reliability
- Performance
- IT-Security Compliance

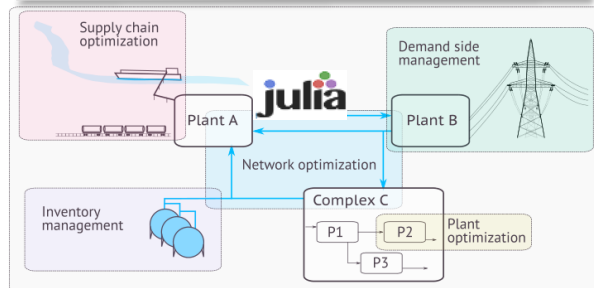
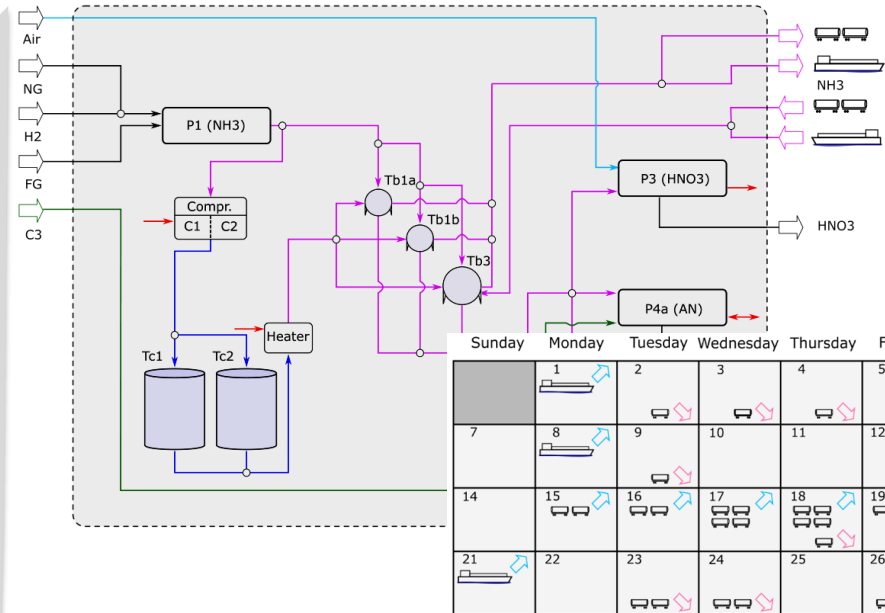




Uses cases – INEOS in Köln, Scheduling



The ammonia network at INEOS in Köln



Optimizer developed by TUDO

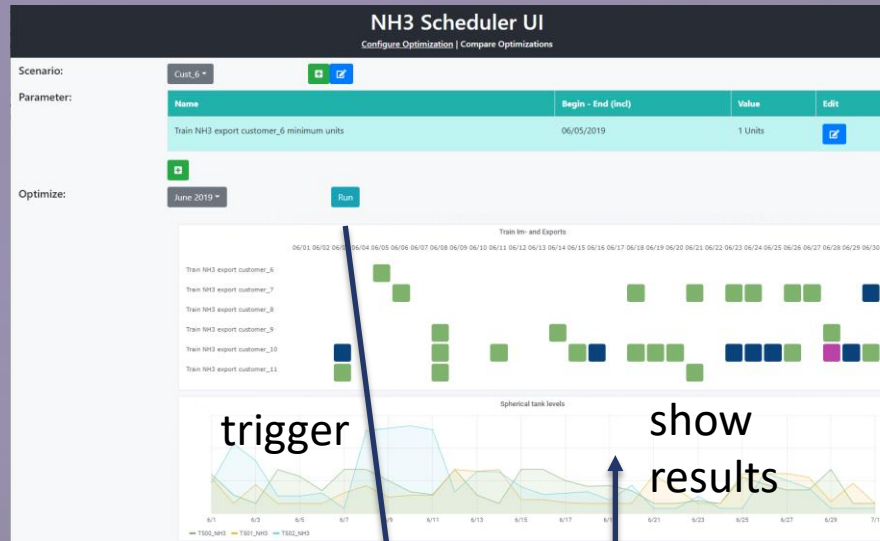
Import

Model Integration and
Data Orchestration

int₃xc
SUITE

Uses cases – INEOS in Köln, Scheduling

Scheduling



Scheduling
Tool

PIMS

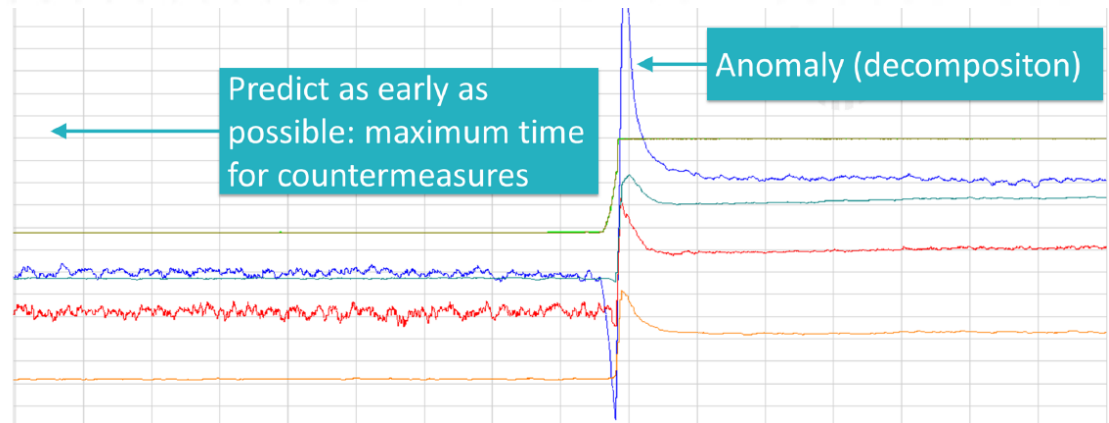
Web Interface

Import

TUDO

Optimizer

Uses cases – INEOS in Köln, Anomaly Detection



divis
intelligent solutions



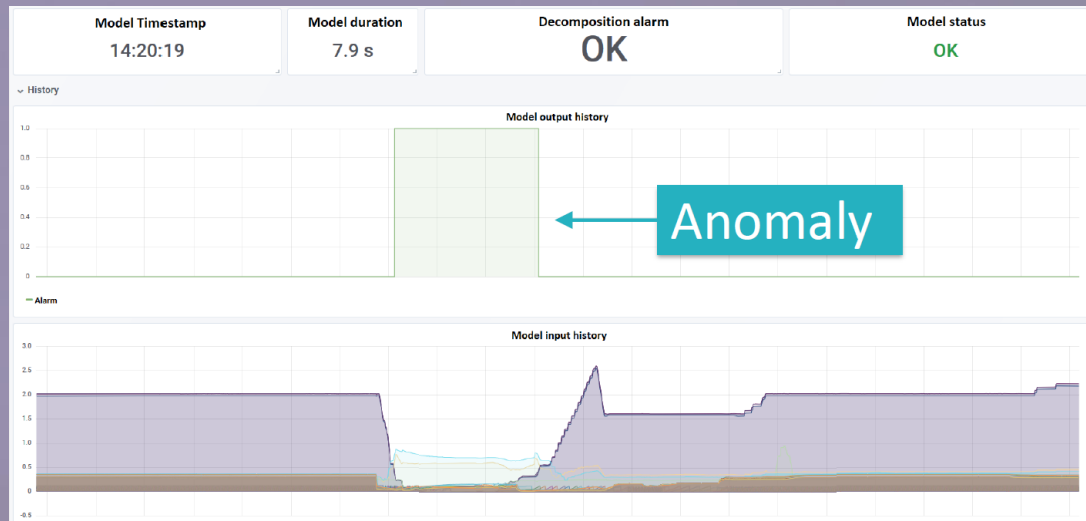
ClearVu
Analytics™

Import

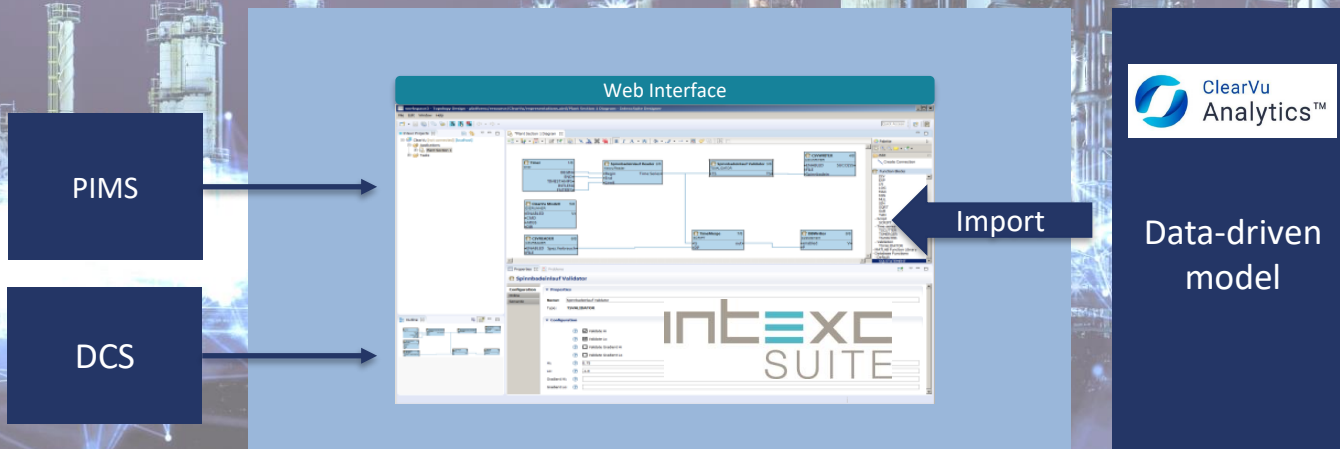
Model Integration and
Data Orchestration

int₃xc
SUITE

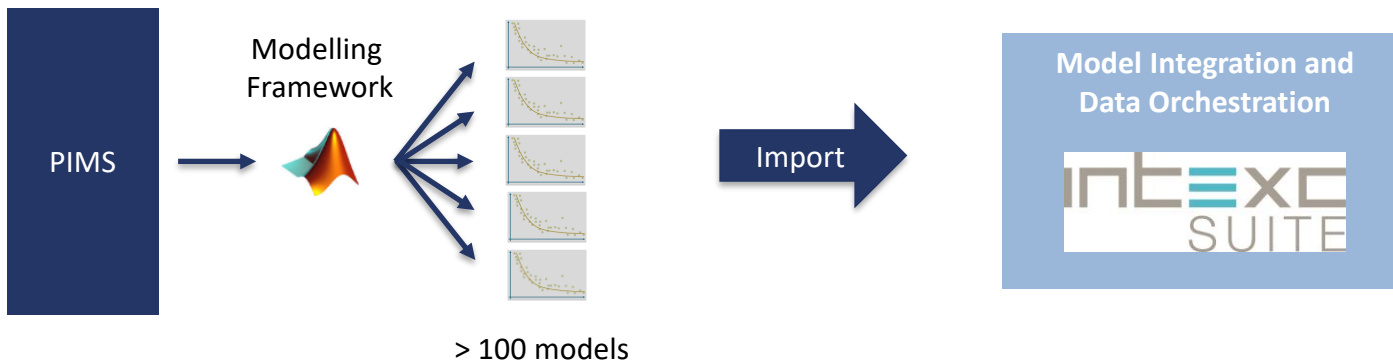
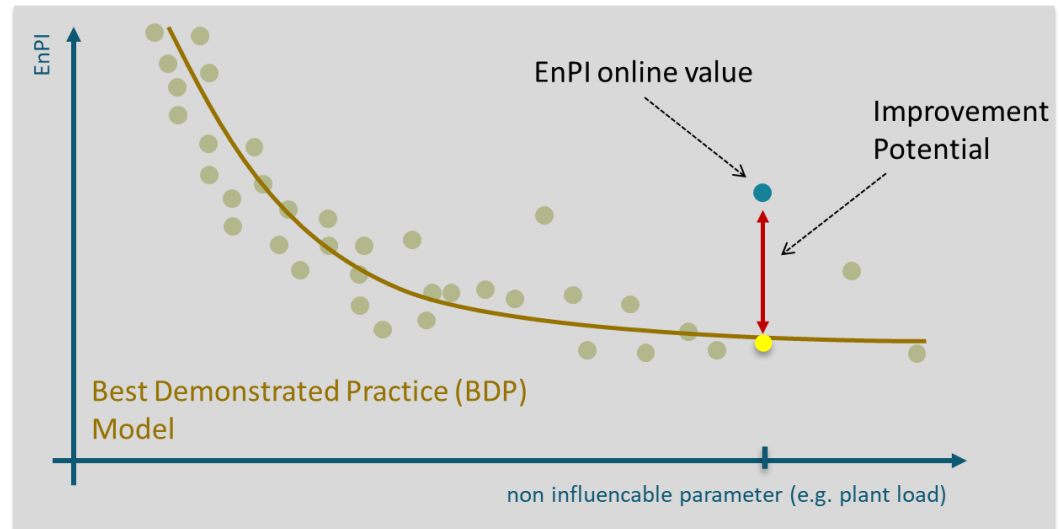
Uses cases – INEOS in Köln, Anomaly Detection



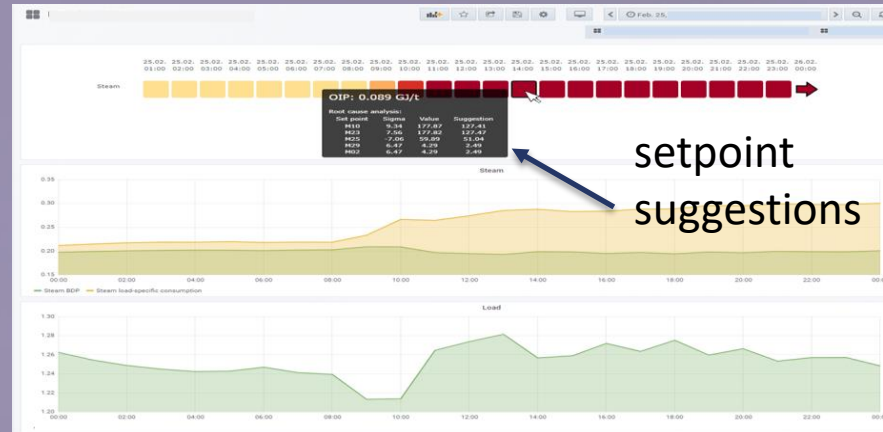
Anomaly
Detection



Uses cases – INEOS in Köln, Energy Management

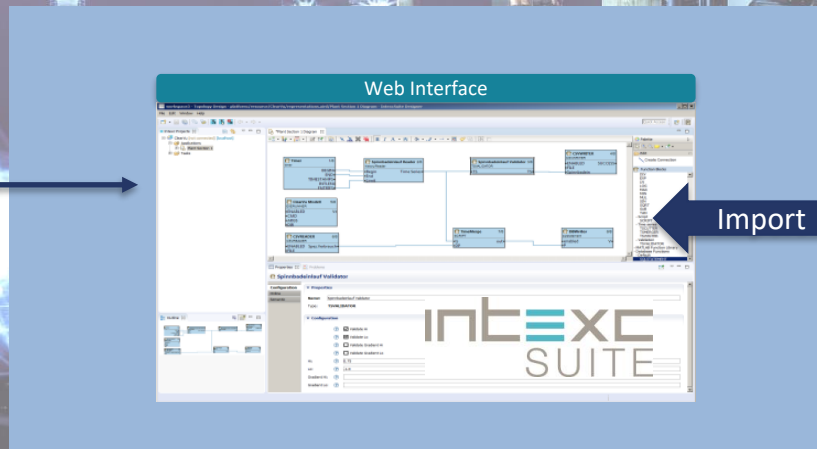


Uses cases – INEOS in Köln, Energy Management



Energy Management

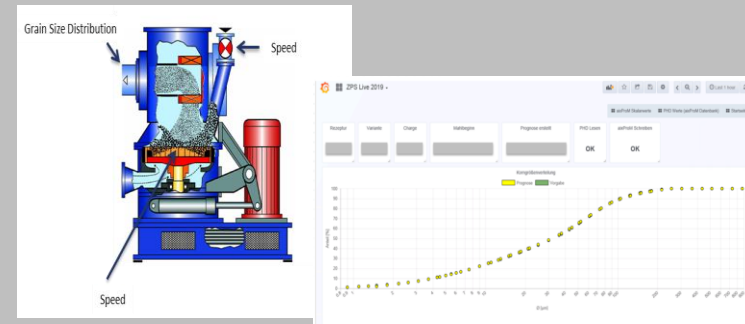
PIMS



Data-driven Models

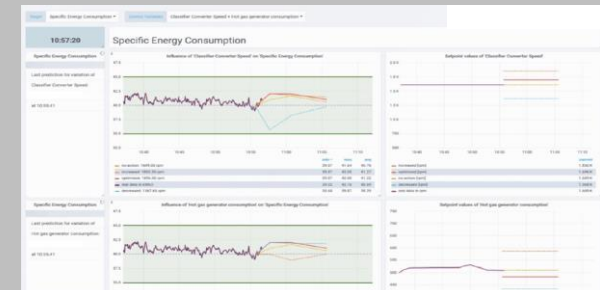
Production Assistance

Industry Sector: Mineral
 Partner : aixprocess, Aachen
 Modelling Tool: python
 Application: Online prediction of grain size distribution



Decision Support

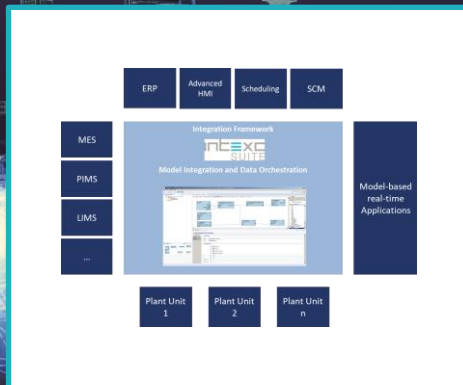
Industry Sector: Cement
 Partner: aixprocess, Aachen
 Modelling Tool: TensorFlow
 Application: Prediction of energy consumption
 Predictive maintenance of mill wear



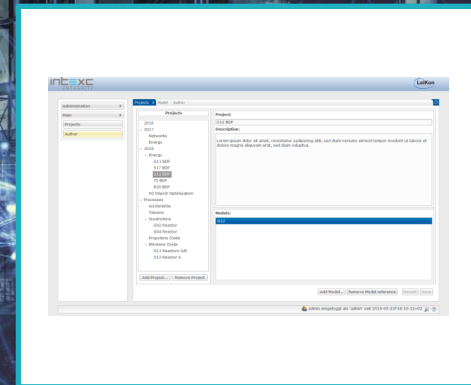
Predictive Maintenance

IT Integration – The Solution

- Ease of use and reduced engineering efforts to integrate model-based applications into heterogeneous IT- and OT- system environments
- Contribution to push model-based real-time solutions in industry
- Nearly all presented use cases will remain in productive operation
- **Thanks to all who made the funding possible and thanks to all CoPro partner**



Model Integration



Model Management