



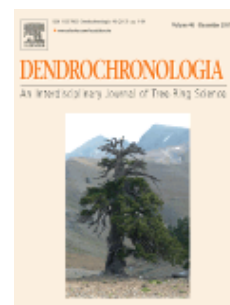
# DENDROCHRONOLOGIA

An Interdisciplinary Journal of Tree-Ring Science

## AUTHOR INFORMATION PACK

### TABLE OF CONTENTS

•	<b>Description</b>	<b>p.1</b>
•	<b>Audience</b>	<b>p.1</b>
•	<b>Impact Factor</b>	<b>p.1</b>
•	<b>Abstracting and Indexing</b>	<b>p.2</b>
•	<b>Editorial Board</b>	<b>p.2</b>
•	<b>Guide for Authors</b>	<b>p.3</b>



ISSN: 1125-7865

### DESCRIPTION

*Dendrochronologia* is a peer-reviewed international scholarly journal that presents high-quality research related to **growth rings** of **woody plants, i.e., trees and shrubs**, and the application of **tree-ring studies**.

The areas covered by the journal include, but are not limited to: **Archaeology Botany Climatology Ecology Forestry Geology Hydrology**

Original research articles, reviews, communications, technical notes and personal notes are considered for publication.

#### Benefits to authors

We provide many author benefits, such as free PDFs, a liberal copyright policy, special discounts on Elsevier publications and much more. Please click here for more information on our [author services](#).

### AUDIENCE

Archaeologists, geologists, ecologists, hydrologists, climatologists, foresters, and botanists

### IMPACT FACTOR

2016: 2.259 © Clarivate Analytics Journal Citation Reports 2017

## ABSTRACTING AND INDEXING

---

BIOSIS  
CAB Abstracts  
Cambridge Scientific Abstracts  
GeoRef  
Pascal  
Scopus  
Engineering Village - GEOBASE  
Elsevier BIOBASE  
AATA Online: Abstracts of International Conservation Literature  
Current Contents/Agriculture, Biology & Environmental Sciences  
Getty Conservation Institute Project Bibliographies  
Science Citation Index Expanded  
Bibliography of Dendrochronology  
NISC - National Information Services Corporation

## EDITORIAL BOARD

---

### *Editor-in-Chief*

**Paolo Cherubini**, Swiss Federal Research Institute WSL, Zürcherstrasse 111, 8903, Birmensdorf, Switzerland

### *Editorial Coordinator*

**Erin Gleeson**, SciencEdit.CH [www.sciencedit.ch](http://www.sciencedit.ch)

### *Associate Editors*

**Achim Bräuning**, Friedrich-Alexander-Universität Erlangen-Nürnberg, Erlangen, Germany  
**Martin Bridge**, University College London (UCL), London, UK  
**Keith Briffa**<sup>†</sup>, University of East Anglia, Norwich, UK  
**Andrew G. Bunn**, Western Washington University, Bellingham WA, USA  
**Carolyn Copenheaver**, Virginia Tech, Blacksburg, Virginia, USA  
**Rosanne D'Arrigo**, Columbia University, Palisades, New York, USA  
**Dieter Eckstein**, Universität Hamburg, Hamburg, Germany  
**Holger Gärtner**, Swiss Federal Research Institute WSL, Birmensdorf, Switzerland  
**Aster Gebrekirstos**, World Agroforestry Centre (ICRAF), Nairobi, Kenya  
**John L Innes**, University of British Columbia, Vancouver, British Columbia, Canada  
**Bernd Kromer**, University of Heidelberg, Heidelberg, Germany  
**Thomas Levanic**, Slovenian Forestry Institute, Ljubljana, Slovenia  
**Simcha Lev-Yadun**, University of Haifa, Oranim, Tivon, Israel  
**Hans Linderholm**, Göteborgs Universitet, Gothenburg, Sweden  
**Emanuele Lingua**, Università degli Studi di Padova, Legnaro PD, Italy  
**Yu Liu**, Chinese Academy of Sciences (CAS), Xi'an, China  
**Harri Mäkinen**, Natural Resources Institute Finland (Luke), Vantaa, Finland  
**Renzo Motta**, University of Turin, Grugliasco (TO), Italy  
**Paola Nola**, Università degli Studi di Pavia, Pavia, Italy  
**Charlotte Pearson**, University of Arizona, Tucson, AZ, USA  
**Kambiz Pourtahmasi**, University of Tehran, Karaj, Iran  
**Fidel Alejandro Roig Juñent**, Universidad Nacional de Cuyo, Mendoza, Argentina  
**Matthias Saurer**, Swiss Federal Research Institute WSL, Birmensdorf, Switzerland  
**Olga Solomina**, Russian Academy of Sciences, Moscow, Russian Federation  
**Carlo Urbinati**, Università Politecnica delle Marche, Ancona, Italy  
**Rob Wilson**, University of St. Andrews, St. Andrews, UK  
**Connie A Woodhouse**, NOAA National Climatic Data Center, Boulder, CO, Colorado, USA  
**Martin Worbes**, University of Goettingen, Goettingen, Germany  
**Qi-Bin Zhang**, Chinese Academy of Sciences, Beijing, China

## GUIDE FOR AUTHORS

---

### INTRODUCTION

Dendrochronologia is an international scholarly journal in tree-ring research. It publishes high quality original research dealing with growth rings of woody plants and the application of tree-ring studies to problems in a wide variety of fields including, but not limited to archaeology, botany, climatology, ecology, forestry, geology and hydrology. Original research articles, reviews, technical notes, communications and personal notes are considered for publication.

#### *Types of contributions*

Original research articles report the results of original research. The material should not have been previously published elsewhere, except in a preliminary form. The manuscripts submitted undergo peer reviews by at least two independent referees under the coordination of the editors and the associate editors.

Reviews are organised critical syntheses of information on important topics. They may be submitted or invited. The manuscripts submitted undergo peer reviews by at least two independent referees under the coordination of the editors and the associate editors.

Technical notes are related to software, measuring devices, or any tools or methods that relate to dendrochronology. The manuscripts submitted undergo peer review by at least one independent referee under the coordination of the editors and the associate editors.

Communications are critical comments on previous papers published in Dendrochronologia or other issues related to dendrochronology, reports on conferences, dendrochronology related news or book reviews (see below). The manuscripts submitted undergo peer review by at least one independent referee under the coordination of the editors and the associate editors.

Personal notes: They include honours, obituaries, In Memoriam and non technical letters to the editor. They are submitted directly to the editors and the associate editors.

Book reviews: Books and monographs for review are welcome. Anyone who wishes to review books for Dendrochronologia should send a curriculum vitae and a brief description of his or her area of expertise to the editorial office.

#### *Page charges*

This journal has no page charges.

#### *Submission checklist*

You can use this list to carry out a final check of your submission before you send it to the journal for review. Please check the relevant section in this Guide for Authors for more details.

#### **Ensure that the following items are present:**

One author has been designated as the corresponding author with contact details:

- E-mail address
- Full postal address

All necessary files have been uploaded:

##### *Manuscript:*

- Include keywords
- All figures (include relevant captions)
- All tables (including titles, description, footnotes)
- Ensure all figure and table citations in the text match the files provided
- Indicate clearly if color should be used for any figures in print

*Graphical Abstracts / Highlights files* (where applicable)

*Supplemental files* (where applicable)

Further considerations

- Manuscript has been 'spell checked' and 'grammar checked'
- All references mentioned in the Reference List are cited in the text, and vice versa

- Permission has been obtained for use of copyrighted material from other sources (including the Internet)
- A competing interests statement is provided, even if the authors have no competing interests to declare
- Journal policies detailed in this guide have been reviewed
- Referee suggestions and contact details provided, based on journal requirements

For further information, visit our [Support Center](#).

## BEFORE YOU BEGIN

### *Ethics in publishing*

Please see our information pages on [Ethics in publishing](#) and [Ethical guidelines for journal publication](#).

### *Declaration of interest*

All authors must disclose any financial and personal relationships with other people or organizations that could inappropriately influence (bias) their work. Examples of potential conflicts of interest include employment, consultancies, stock ownership, honoraria, paid expert testimony, patent applications/registrations, and grants or other funding. Authors must disclose any interests in two places: 1. A summary declaration of interest statement in the title page file (if double-blind) or the manuscript file (if single-blind). If there are no interests to declare then please state this: 'Declarations of interest: none'. This summary statement will be ultimately published if the article is accepted. 2. Detailed disclosures as part of a separate Declaration of Interest form, which forms part of the journal's official records. It is important for potential interests to be declared in both places and that the information matches. [More information](#).

### *Submission declaration and verification*

Submission of an article implies that the work described has not been published previously (except in the form of an abstract or as part of a published lecture or academic thesis or as an electronic preprint, see '[Multiple, redundant or concurrent publication](#)' section of our ethics policy for more information), that it is not under consideration for publication elsewhere, that its publication is approved by all authors and tacitly or explicitly by the responsible authorities where the work was carried out, and that, if accepted, it will not be published elsewhere in the same form, in English or in any other language, including electronically without the written consent of the copyright-holder. To verify originality, your article may be checked by the originality detection service [Crossref Similarity Check](#).

### *Changes to authorship*

Authors are expected to consider carefully the list and order of authors **before** submitting their manuscript and provide the definitive list of authors at the time of the original submission. Any addition, deletion or rearrangement of author names in the authorship list should be made only **before** the manuscript has been accepted and only if approved by the journal Editor. To request such a change, the Editor must receive the following from the **corresponding author**: (a) the reason for the change in author list and (b) written confirmation (e-mail, letter) from all authors that they agree with the addition, removal or rearrangement. In the case of addition or removal of authors, this includes confirmation from the author being added or removed.

Only in exceptional circumstances will the Editor consider the addition, deletion or rearrangement of authors **after** the manuscript has been accepted. While the Editor considers the request, publication of the manuscript will be suspended. If the manuscript has already been published in an online issue, any requests approved by the Editor will result in a corrigendum.

### *Article transfer service*

This journal is part of our Article Transfer Service. This means that if the Editor feels your article is more suitable in one of our other participating journals, then you may be asked to consider transferring the article to one of those. If you agree, your article will be transferred automatically on your behalf with no need to reformat. Please note that your article will be reviewed again by the new journal. [More information](#).

### *Copyright*

Upon acceptance of an article, authors will be asked to complete a 'Journal Publishing Agreement' (see [more information](#) on this). An e-mail will be sent to the corresponding author confirming receipt of the manuscript together with a 'Journal Publishing Agreement' form or a link to the online version of this agreement.

Subscribers may reproduce tables of contents or prepare lists of articles including abstracts for internal circulation within their institutions. [Permission](#) of the Publisher is required for resale or distribution outside the institution and for all other derivative works, including compilations and translations. If excerpts from other copyrighted works are included, the author(s) must obtain written permission from the copyright owners and credit the source(s) in the article. Elsevier has [preprinted forms](#) for use by authors in these cases.

For open access articles: Upon acceptance of an article, authors will be asked to complete an 'Exclusive License Agreement' ([more information](#)). Permitted third party reuse of open access articles is determined by the author's choice of [user license](#).

### **Author rights**

As an author you (or your employer or institution) have certain rights to reuse your work. [More information](#).

*Elsevier supports responsible sharing*

Find out how you can [share your research](#) published in Elsevier journals.

### **Role of the funding source**

You are requested to identify who provided financial support for the conduct of the research and/or preparation of the article and to briefly describe the role of the sponsor(s), if any, in study design; in the collection, analysis and interpretation of data; in the writing of the report; and in the decision to submit the article for publication. If the funding source(s) had no such involvement then this should be stated.

*Funding body agreements and policies*

Elsevier has established a number of agreements with funding bodies which allow authors to comply with their funder's open access policies. Some funding bodies will reimburse the author for the Open Access Publication Fee. Details of [existing agreements](#) are available online.

### **Open access**

This journal offers authors a choice in publishing their research:

#### **Subscription**

- Articles are made available to subscribers as well as developing countries and patient groups through our [universal access programs](#).
- No open access publication fee payable by authors.

#### **Open access**

- Articles are freely available to both subscribers and the wider public with permitted reuse.
- An open access publication fee is payable by authors or on their behalf, e.g. by their research funder or institution.

Regardless of how you choose to publish your article, the journal will apply the same peer review criteria and acceptance standards.

For open access articles, permitted third party (re)use is defined by the following [Creative Commons user licenses](#):

*Creative Commons Attribution (CC BY)*

Lets others distribute and copy the article, create extracts, abstracts, and other revised versions, adaptations or derivative works of or from an article (such as a translation), include in a collective work (such as an anthology), text or data mine the article, even for commercial purposes, as long as they credit the author(s), do not represent the author as endorsing their adaptation of the article, and do not modify the article in such a way as to damage the author's honor or reputation.

*Creative Commons Attribution-NonCommercial-NoDerivs (CC BY-NC-ND)*

For non-commercial purposes, lets others distribute and copy the article, and to include in a collective work (such as an anthology), as long as they credit the author(s) and provided they do not alter or modify the article.

The open access publication fee for this journal is **USD 1500**, excluding taxes. Learn more about Elsevier's pricing policy: <http://www.elsevier.com/openaccesspricing>.

### *Green open access*

Authors can share their research in a variety of different ways and Elsevier has a number of green open access options available. We recommend authors see our [green open access page](#) for further information. Authors can also self-archive their manuscripts immediately and enable public access from their institution's repository after an embargo period. This is the version that has been accepted for publication and which typically includes author-incorporated changes suggested during submission, peer review and in editor-author communications. Embargo period: For subscription articles, an appropriate amount of time is needed for journals to deliver value to subscribing customers before an article becomes freely available to the public. This is the embargo period and it begins from the date the article is formally published online in its final and fully citable form. [Find out more](#).

This journal has an embargo period of 24 months.

### *Language (usage and editing services)*

Please write your text in good English (American or British usage is accepted, but not a mixture of these). Authors who feel their English language manuscript may require editing to eliminate possible grammatical or spelling errors and to conform to correct scientific English may wish to use the [English Language Editing service](#) available from Elsevier's WebShop.

### **Submission**

Our online submission system guides you stepwise through the process of entering your article details and uploading your files. The system converts your article files to a single PDF file used in the peer-review process. Editable files (e.g., Word, LaTeX) are required to typeset your article for final publication. All correspondence, including notification of the Editor's decision and requests for revision, is sent by e-mail.

### *Submit your article*

Please submit your article via <https://www.evise.com/profile/api/navigate/DENDRO>.

## **PREPARATION**

### **Peer review**

This journal operates a single blind review process. All contributions will be initially assessed by the editor for suitability for the journal. Papers deemed suitable are then typically sent to a minimum of two independent expert reviewers to assess the scientific quality of the paper. The Editor is responsible for the final decision regarding acceptance or rejection of articles. The Editor's decision is final. [More information on types of peer review](#).

It is important that the file be saved in the native format of the word processor used. The text should be in single-column format. In order to facilitate the review process, please include line numbers within the text. Keep the layout of the text as simple as possible. Most formatting codes will be removed and replaced on processing the article. In particular, do not use the word processor's options to justify text or to hyphenate words. However, do use bold face, italics, subscripts, superscripts etc. When preparing tables, if you are using a table grid, use only one grid for each individual table and not a grid for each row. If no grid is used, use tabs, not spaces, to align columns. The electronic text should be prepared in a way very similar to that of conventional manuscripts (see also the Guide to Publishing with Elsevier: <http://www.elsevier.com/guidepublication>). Note that source files of figures, tables and text graphics will be required whether or not you embed your figures in the text. See also the section on Electronic artwork.

### **Article structure**

#### *Subdivision - unnumbered sections*

Divide your article into clearly defined sections. Each subsection is given a brief heading. Each heading should appear on its own separate line. Subsections should be used as much as possible when cross-referencing text: refer to the subsection by heading as opposed to simply 'the text'.

#### *Introduction*

State the objectives of the work and provide an adequate background, avoiding a detailed literature survey or a summary of the results.

#### *Material and methods*

Provide sufficient details to allow the work to be reproduced by an independent researcher. Methods that are already published should be summarized, and indicated by a reference. If quoting directly from a previously published method, use quotation marks and also cite the source. Any modifications to existing methods should also be described.



## Results

Results should be clear and concise.

## Discussion

This should explore the significance of the results of the work, not repeat them. A combined Results and Discussion section is often appropriate. Avoid extensive citations and discussion of published literature.

## Conclusions

The main conclusions of the study may be presented in a short Conclusions section, which may stand alone or form a subsection of a Discussion or Results and Discussion section.

## Appendices

If there is more than one appendix, they should be identified as A, B, etc. Formulae and equations in appendices should be given separate numbering: Eq. (A.1), Eq. (A.2), etc.; in a subsequent appendix, Eq. (B.1) and so on. Similarly for tables and figures: Table A.1; Fig. A.1, etc.

## Essential title page information

- **Title.** Concise and informative. Titles are often used in information-retrieval systems. Avoid abbreviations and formulae where possible.
- **Author names and affiliations.** Please clearly indicate the given name(s) and family name(s) of each author and check that all names are accurately spelled. You can add your name between parentheses in your own script behind the English transliteration. Present the authors' affiliation addresses (where the actual work was done) below the names. Indicate all affiliations with a lower-case superscript letter immediately after the author's name and in front of the appropriate address. Provide the full postal address of each affiliation, including the country name and, if available, the e-mail address of each author.
- **Corresponding author.** Clearly indicate who will handle correspondence at all stages of refereeing and publication, also post-publication. This responsibility includes answering any future queries about Methodology and Materials. **Ensure that the e-mail address is given and that contact details are kept up to date by the corresponding author.**
- **Present/permanent address.** If an author has moved since the work described in the article was done, or was visiting at the time, a 'Present address' (or 'Permanent address') may be indicated as a footnote to that author's name. The address at which the author actually did the work must be retained as the main, affiliation address. Superscript Arabic numerals are used for such footnotes.

## Abstract

A concise and factual abstract is required. The abstract should state briefly the purpose of the research, the principal results and major conclusions. An abstract is often presented separately from the article, so it must be able to stand alone. For this reason, References should be avoided, but if essential, then cite the author(s) and year(s). Also, non-standard or uncommon abbreviations should be avoided, but if essential they must be defined at their first mention in the abstract itself.

## Graphical abstract

Although a graphical abstract is optional, its use is encouraged as it draws more attention to the online article. The graphical abstract should summarize the contents of the article in a concise, pictorial form designed to capture the attention of a wide readership. Graphical abstracts should be submitted as a separate file in the online submission system. Image size: Please provide an image with a minimum of 531 × 1328 pixels (h × w) or proportionally more. The image should be readable at a size of 5 × 13 cm using a regular screen resolution of 96 dpi. Preferred file types: TIFF, EPS, PDF or MS Office files. You can view [Example Graphical Abstracts](#) on our information site.

Authors can make use of Elsevier's [Illustration Services](#) to ensure the best presentation of their images and in accordance with all technical requirements.

## Highlights

Highlights are a short collection of bullet points that convey the core findings of the article. Highlights are optional and should be submitted in a separate editable file in the online submission system. Please use 'Highlights' in the file name and include 3 to 5 bullet points (maximum 85 characters, including spaces, per bullet point). You can view [example Highlights](#) on our information site.

## Keywords

Immediately after the abstract, provide a maximum of 6 keywords, using British spelling and avoiding general and plural terms and multiple concepts (avoid, for example, 'and', 'of'). Be sparing with abbreviations: only abbreviations firmly established in the field may be eligible. These keywords will be used for indexing purposes.

## Abbreviations

Define abbreviations that are not standard in this field in a footnote to be placed on the first page of the article. Such abbreviations that are unavoidable in the abstract must be defined at their first mention there, as well as in the footnote. Ensure consistency of abbreviations throughout the article.

## Acknowledgements

Collate acknowledgements in a separate section at the end of the article before the references and do not, therefore, include them on the title page, as a footnote to the title or otherwise. List here those individuals who provided help during the research (e.g., providing language help, writing assistance or proof reading the article, etc.).

## Formatting of funding sources

List funding sources in this standard way to facilitate compliance to funder's requirements:

Funding: This work was supported by the National Institutes of Health [grant numbers xxxx, yyyy]; the Bill & Melinda Gates Foundation, Seattle, WA [grant number zzzz]; and the United States Institutes of Peace [grant number aaaa].

It is not necessary to include detailed descriptions on the program or type of grants and awards. When funding is from a block grant or other resources available to a university, college, or other research institution, submit the name of the institute or organization that provided the funding.

If no funding has been provided for the research, please include the following sentence:

This research did not receive any specific grant from funding agencies in the public, commercial, or not-for-profit sectors.

## Units

Follow internationally accepted rules and conventions: use the international system of units (SI). If other units are mentioned, please give their equivalent in SI.

## Math formulae

Please submit math equations as editable text and not as images. Present simple formulae in line with normal text where possible and use the solidus (/) instead of a horizontal line for small fractional terms, e.g., X/Y. In principle, variables are to be presented in italics. Powers of e are often more conveniently denoted by exp. Number consecutively any equations that have to be displayed separately from the text (if referred to explicitly in the text).

## Embedded math equations

If you are submitting an article prepared with Microsoft Word containing embedded math equations then please read this ([related support information](#)).

## Footnotes

Footnotes should be used sparingly. Number them consecutively throughout the article. Many word processors can build footnotes into the text, and this feature may be used. Otherwise, please indicate the position of footnotes in the text and list the footnotes themselves separately at the end of the article. Do not include footnotes in the Reference list.

## Artwork

### Image manipulation

Whilst it is accepted that authors sometimes need to manipulate images for clarity, manipulation for purposes of deception or fraud will be seen as scientific ethical abuse and will be dealt with accordingly. For graphical images, this journal is applying the following policy: no specific feature within an image may be enhanced, obscured, moved, removed, or introduced. Adjustments of brightness, contrast, or color balance are acceptable if and as long as they do not obscure or eliminate any information present in the original. Nonlinear adjustments (e.g. changes to gamma settings) must be disclosed in the figure legend.



## Electronic artwork

### General points

- Make sure you use uniform lettering and sizing of your original artwork.
- Embed the used fonts if the application provides that option.
- Aim to use the following fonts in your illustrations: Arial, Courier, Times New Roman, Symbol, or use fonts that look similar.
- Number the illustrations according to their sequence in the text.
- Use a logical naming convention for your artwork files.
- Provide captions to illustrations separately.
- Size the illustrations close to the desired dimensions of the published version.
- Submit each illustration as a separate file.

A detailed [guide on electronic artwork](#) is available.

**You are urged to visit this site; some excerpts from the detailed information are given here.**

### Formats

If your electronic artwork is created in a Microsoft Office application (Word, PowerPoint, Excel) then please supply 'as is' in the native document format.

Regardless of the application used other than Microsoft Office, when your electronic artwork is finalized, please 'Save as' or convert the images to one of the following formats (note the resolution requirements for line drawings, halftones, and line/halftone combinations given below):

EPS (or PDF): Vector drawings, embed all used fonts.

TIFF (or JPEG): Color or grayscale photographs (halftones), keep to a minimum of 300 dpi.

TIFF (or JPEG): Bitmapped (pure black & white pixels) line drawings, keep to a minimum of 1000 dpi.

TIFF (or JPEG): Combinations bitmapped line/half-tone (color or grayscale), keep to a minimum of 500 dpi.

### Please do not:

- Supply files that are optimized for screen use (e.g., GIF, BMP, PICT, WPG); these typically have a low number of pixels and limited set of colors;
- Supply files that are too low in resolution;
- Submit graphics that are disproportionately large for the content.

### Color artwork

Please make sure that artwork files are in an acceptable format (TIFF (or JPEG), EPS (or PDF), or MS Office files) and with the correct resolution. If, together with your accepted article, you submit usable color figures then Elsevier will ensure, at no additional charge, that these figures will appear in color online (e.g., ScienceDirect and other sites) regardless of whether or not these illustrations are reproduced in color in the printed version. **For color reproduction in print, you will receive information regarding the costs from Elsevier after receipt of your accepted article.** Please indicate your preference for color: in print or online only. [Further information on the preparation of electronic artwork.](#)

### Illustration services

[Elsevier's WebShop](#) offers Illustration Services to authors preparing to submit a manuscript but concerned about the quality of the images accompanying their article. Elsevier's expert illustrators can produce scientific, technical and medical-style images, as well as a full range of charts, tables and graphs. Image 'polishing' is also available, where our illustrators take your image(s) and improve them to a professional standard. Please visit the website to find out more.

### Figure captions

Ensure that each illustration has a caption. Supply captions separately, not attached to the figure. A caption should comprise a brief title (**not** on the figure itself) and a description of the illustration. Keep text in the illustrations themselves to a minimum but explain all symbols and abbreviations used.

### Tables

Please submit tables as editable text and not as images. Tables can be placed either next to the relevant text in the article, or on separate page(s) at the end. Number tables consecutively in accordance with their appearance in the text and place any table notes below the table body. Be sparing in the use of tables and ensure that the data presented in them do not duplicate results described elsewhere in the article. Please avoid using vertical rules and shading in table cells.

### References

### *Citation in text*

Please ensure that every reference cited in the text is also present in the reference list (and vice versa). Any references cited in the abstract must be given in full. Unpublished results and personal communications are not recommended in the reference list, but may be mentioned in the text. If these references are included in the reference list they should follow the standard reference style of the journal and should include a substitution of the publication date with either 'Unpublished results' or 'Personal communication'. Citation of a reference as 'in press' implies that the item has been accepted for publication.

### *Reference links*

Increased discoverability of research and high quality peer review are ensured by online links to the sources cited. In order to allow us to create links to abstracting and indexing services, such as Scopus, CrossRef and PubMed, please ensure that data provided in the references are correct. Please note that incorrect surnames, journal/book titles, publication year and pagination may prevent link creation. When copying references, please be careful as they may already contain errors. Use of the DOI is encouraged.

A DOI can be used to cite and link to electronic articles where an article is in-press and full citation details are not yet known, but the article is available online. A DOI is guaranteed never to change, so you can use it as a permanent link to any electronic article. An example of a citation using DOI for an article not yet in an issue is: VanDecar J.C., Russo R.M., James D.E., Ambeh W.B., Franke M. (2003). Aseismic continuation of the Lesser Antilles slab beneath northeastern Venezuela. *Journal of Geophysical Research*, <https://doi.org/10.1029/2001JB000884>. Please note the format of such citations should be in the same style as all other references in the paper.

### *Web references*

As a minimum, the full URL should be given and the date when the reference was last accessed. Any further information, if known (DOI, author names, dates, reference to a source publication, etc.), should also be given. Web references can be listed separately (e.g., after the reference list) under a different heading if desired, or can be included in the reference list.

### *Data references*

This journal encourages you to cite underlying or relevant datasets in your manuscript by citing them in your text and including a data reference in your Reference List. Data references should include the following elements: author name(s), dataset title, data repository, version (where available), year, and global persistent identifier. Add [dataset] immediately before the reference so we can properly identify it as a data reference. The [dataset] identifier will not appear in your published article.

### *References in a special issue*

Please ensure that the words 'this issue' are added to any references in the list (and any citations in the text) to other articles in the same Special Issue.

### *Reference management software*

Most Elsevier journals have their reference template available in many of the most popular reference management software products. These include all products that support [Citation Style Language styles](#), such as [Mendeley](#) and [Zotero](#), as well as [EndNote](#). Using the word processor plug-ins from these products, authors only need to select the appropriate journal template when preparing their article, after which citations and bibliographies will be automatically formatted in the journal's style. If no template is yet available for this journal, please follow the format of the sample references and citations as shown in this Guide.

Users of Mendeley Desktop can easily install the reference style for this journal by clicking the following link:

<http://open.mendeley.com/use-citation-style/dendrochronologia>

When preparing your manuscript, you will then be able to select this style using the Mendeley plug-ins for Microsoft Word or LibreOffice.

### *Reference style*

The author must verify each reference against the original. Each reference must be cited in the text, using the surname of the authors (if one or two) and the year, e.g. (Eckstein, 1980) or Eckstein (1980); (Baillie and Pilcher, 1983) or Baillie and Pilcher (1983). The names may or may not be in parentheses, depending on the sentence construction, but the year always is. If there are three or more authors, only the first author is cited followed by et al. (Tessier et al., 1992). Papers are listed in chronological order, beginning with the earliest paper (Aniol and Eckstein, 1984; Lorimer and Frehlich,

1989; Baisan and Swetnam, 1990; Briffa et al., 1998). If references occur that are not uniquely identified by the authors' names and year, use a, b, c, etc., after the year, e.g., Schweingruber 1990a, 1990b for the text citation and in the reference list. The reference list must be listed in alphabetical order according to the name of the first author. References with the same first author are listed in chronological order. References should follow the form used in current issues of the Journal, as in the following examples.

Journal article: Biondi, F., 2000. Are climate-tree growth relationships changing in North-Central Idaho, USA? *Arctic, Antarctic, and Alpine Research* 32, 111–16. Jacoby, G.C., D'Arrigo, R.D., 1995. Tree-ring width and density evidence of climatic and potential forest change in Alaska. *Global Geochemical Cycles* 9, 227–34.

Book: Schweingruber, F.H., 1996. *Tree Rings and Environment. Dendroecology*. Paul Haupt Verlag, Berne, 609 pp.

Edited book: Markgraf, V. (Ed.), 2001. *Interhemispheric Climate Linkages*. Academic Press, San Diego, 848 pp. Cook, E., 1980. A conceptual linear aggregate model for tree rings, in: Cook, E., Kairiuktis, A. (Eds.), *Methods of dendrochronology: Applications in the environmental sciences*. Kluwer Academic Publ., Dordrecht, pp. 98–103.

Paper in conference proceedings: Tessier, L., Belingard, C., 1993. Dendrochronology at the upper forest limit, in: Anfodillo, T., Urbinati, C. (Eds.), *Ecologia delle foreste di alta quota*. Proc. XXX Corso di Cultura in Ecologia. Università di Padova, pp. 205–17.

Report: Barrett, S.W., Arno, S.F., 1988. Increment-borer methods for determining fire history in coniferous forests. US Department of Agriculture, Forest Service, General Technical Report INT- 44, 15 pp.

Thesis: Sthale, D.W., 1980. The tree-ring record of false spring in the south-central USA. Dissertation, Arizona State University. The titles of periodicals mentioned in the list of references should not be abbreviated. The titles of publications in non-Latin alphabets should be translated, and a notation such as "(in Russian)" or "(in Greek, with English abstract)" should be added. Work accepted for publication, but not yet published, should be referred to as "in press". References concerning unpublished data and "personal communications" should not be cited in the reference list but may be mentioned in the text.

### *Data references*

For reference style 2 Harvard: [dataset] Oguro, M., Imahiro, S., Saito, S., Nakashizuka, T., 2015. Mortality data for Japanese oak wilt disease and surrounding forest compositions. Mendeley Data, v1. <http://dx.doi.org/10.17632/xwj98nb39r.1>.

### *Journal abbreviations source*

Journal names should be abbreviated according to the [List of Title Word Abbreviations](#).

### **Video**

Elsevier accepts video material and animation sequences to support and enhance your scientific research. Authors who have video or animation files that they wish to submit with their article are strongly encouraged to include links to these within the body of the article. This can be done in the same way as a figure or table by referring to the video or animation content and noting in the body text where it should be placed. All submitted files should be properly labeled so that they directly relate to the video file's content. . In order to ensure that your video or animation material is directly usable, please provide the file in one of our recommended file formats with a preferred maximum size of 150 MB per file, 1 GB in total. Video and animation files supplied will be published online in the electronic version of your article in Elsevier Web products, including [ScienceDirect](#). Please supply 'stills' with your files: you can choose any frame from the video or animation or make a separate image. These will be used instead of standard icons and will personalize the link to your video data. For more detailed instructions please visit our [video instruction pages](#). Note: since video and animation cannot be embedded in the print version of the journal, please provide text for both the electronic and the print version for the portions of the article that refer to this content.

## Supplementary material

Supplementary material such as applications, images and sound clips, can be published with your article to enhance it. Submitted supplementary items are published exactly as they are received (Excel or PowerPoint files will appear as such online). Please submit your material together with the article and supply a concise, descriptive caption for each supplementary file. If you wish to make changes to supplementary material during any stage of the process, please make sure to provide an updated file. Do not annotate any corrections on a previous version. Please switch off the 'Track Changes' option in Microsoft Office files as these will appear in the published version.

Tables should be placed on separate pages at the end of the manuscript file. Tables covering more than four pages should be submitted as zip-files or txt-files.

## Research data

This journal encourages and enables you to share data that supports your research publication where appropriate, and enables you to interlink the data with your published articles. Research data refers to the results of observations or experimentation that validate research findings. To facilitate reproducibility and data reuse, this journal also encourages you to share your software, code, models, algorithms, protocols, methods and other useful materials related to the project.

Below are a number of ways in which you can associate data with your article or make a statement about the availability of your data when submitting your manuscript. If you are sharing data in one of these ways, you are encouraged to cite the data in your manuscript and reference list. Please refer to the "References" section for more information about data citation. For more information on depositing, sharing and using research data and other relevant research materials, visit the [research data](#) page.

### Data linking

If you have made your research data available in a data repository, you can link your article directly to the dataset. Elsevier collaborates with a number of repositories to link articles on ScienceDirect with relevant repositories, giving readers access to underlying data that gives them a better understanding of the research described.

There are different ways to link your datasets to your article. When available, you can directly link your dataset to your article by providing the relevant information in the submission system. For more information, visit the [database linking page](#).

For [supported data repositories](#) a repository banner will automatically appear next to your published article on ScienceDirect.

In addition, you can link to relevant data or entities through identifiers within the text of your manuscript, using the following format: Database: xxxx (e.g., TAIR: AT1G01020; CCDC: 734053; PDB: 1XFN).

### Mendeley Data

This journal supports Mendeley Data, enabling you to deposit any research data (including raw and processed data, video, code, software, algorithms, protocols, and methods) associated with your manuscript in a free-to-use, open access repository. During the submission process, after uploading your manuscript, you will have the opportunity to upload your relevant datasets directly to *Mendeley Data*. The datasets will be listed and directly accessible to readers next to your published article online.

For more information, visit the [Mendeley Data for journals page](#).

### Data in Brief

You have the option of converting any or all parts of your supplementary or additional raw data into one or multiple data articles, a new kind of article that houses and describes your data. Data articles ensure that your data is actively reviewed, curated, formatted, indexed, given a DOI and publicly available to all upon publication. You are encouraged to submit your article for *Data in Brief* as an additional item directly alongside the revised version of your manuscript. If your research article is accepted, your data article will automatically be transferred over to *Data in Brief* where it will be editorially reviewed and published in the open access data journal, *Data in Brief*. Please note an open access fee of 500 USD is payable for publication in *Data in Brief*. Full details can be found on the [Data in Brief website](#). Please use [this template](#) to write your Data in Brief.

### *MethodsX*

You have the option of converting relevant protocols and methods into one or multiple MethodsX articles, a new kind of article that describes the details of customized research methods. Many researchers spend a significant amount of time on developing methods to fit their specific needs or setting, but often without getting credit for this part of their work. MethodsX, an open access journal, now publishes this information in order to make it searchable, peer reviewed, citable and reproducible. Authors are encouraged to submit their MethodsX article as an additional item directly alongside the revised version of their manuscript. If your research article is accepted, your methods article will automatically be transferred over to MethodsX where it will be editorially reviewed. Please note an open access fee is payable for publication in MethodsX. Full details can be found on the MethodsX website. Please use [this template](#) to prepare your MethodsX article.

### *Data statement*

To foster transparency, we encourage you to state the availability of your data in your submission. This may be a requirement of your funding body or institution. If your data is unavailable to access or unsuitable to post, you will have the opportunity to indicate why during the submission process, for example by stating that the research data is confidential. The statement will appear with your published article on ScienceDirect. For more information, visit the [Data Statement page](#).

### **Data deposit and linking**

Elsevier encourages authors to deposit raw data sets underpinning their research publication in data repositories, and to enable interlinking of articles and data. Please visit <http://www.elsevier.com/databaselinking> for more information on depositing and linking your data with a supported data repository. Dendrochronologia encourages authors to submit the raw data used in their papers to the International Tree Ring Data Bank (ITRDB). Published primary tree-ring data should no longer be hidden from independent scrutiny and use.

## **AFTER ACCEPTANCE**

### **After Acceptance**

**Availability of accepted article:** This journal makes articles available online as soon as possible after acceptance. This concerns the accepted article (both in HTML and PDF format), which has not yet been copyedited, typeset or proofread. A Digital Object Identifier (DOI) is allocated, thereby making it fully citable and searchable by title, author name(s) and the full text. The article's PDF also carries a disclaimer stating that it is an unedited article. Subsequent production stages will simply replace this version.

### **Online proof correction**

Corresponding authors will receive an e-mail with a link to our online proofing system, allowing annotation and correction of proofs online. The environment is similar to MS Word: in addition to editing text, you can also comment on figures/tables and answer questions from the Copy Editor. Web-based proofing provides a faster and less error-prone process by allowing you to directly type your corrections, eliminating the potential introduction of errors.

If preferred, you can still choose to annotate and upload your edits on the PDF version. All instructions for proofing will be given in the e-mail we send to authors, including alternative methods to the online version and PDF.

We will do everything possible to get your article published quickly and accurately. Please use this proof only for checking the typesetting, editing, completeness and correctness of the text, tables and figures. Significant changes to the article as accepted for publication will only be considered at this stage with permission from the Editor. It is important to ensure that all corrections are sent back to us in one communication. Please check carefully before replying, as inclusion of any subsequent corrections cannot be guaranteed. Proofreading is solely your responsibility.

### **Offprints**

The corresponding author will, at no cost, receive a customized [Share Link](#) providing 50 days free access to the final published version of the article on [ScienceDirect](#). The Share Link can be used for sharing the article via any communication channel, including email and social media. For an extra charge, paper offprints can be ordered via the offprint order form which is sent once the article is accepted for publication. Both corresponding and co-authors may order offprints at any time via Elsevier's [Webshop](#). Corresponding authors who have published their article open access do not receive a Share Link as their final published version of the article is available open access on ScienceDirect and can be shared through the article DOI link.

## **AUTHOR INQUIRIES**

Visit the [Elsevier Support Center](#) to find the answers you need. Here you will find everything from Frequently Asked Questions to ways to get in touch.

You can also [check the status of your submitted article](#) or find out [when your accepted article will be published](#).

© Copyright 2018 Elsevier | <https://www.elsevier.com>