



# Technical Support Services for Groundwater Sustainability Plan Development

The Department of Water Resources' (DWR) Technical Support Services (TSS) supports Groundwater Sustainability Agencies (GSAs) as they develop their Groundwater Sustainability Plans (GSPs). The goal is to provide technical services as well as [data and tools](#)<sup>1</sup> to GSAs at both regional and statewide scales to build the capacity needed to achieve sustainability. TSS is available to GSAs through DWR Region Offices and/or contractors upon DWR funding availability. The initial priority for this funding will be focused on requests in critically over-drafted and high- and medium-priority basins.

## Technical Support Services Available:

### Field Activities

- Monitoring Well Installation
  - Geophysical Logging
  - Geologic Logging
- Groundwater Level Monitoring Training
- Downhole Video Logging
- Other Field Activities

### Modeling

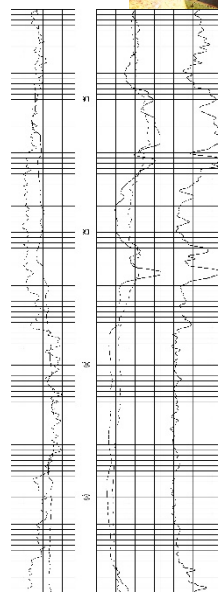
- Modeling Training and Support (pending DWR updated model release)

## Who is Eligible?

GSAs developing GSPs are eligible to apply for these services if they agree to meet all of the following obligations:

- Agree to share any data generated from the technical support service(s) with DWR and the public.
- Comply with all applicable laws related to the technical support service(s).
- Agree to work in an open, inclusive, and collaborative manner toward the development of a GSP, including appointing a coordinator for the basin to represent all GSAs, resolve disputes, and speak as one voice to DWR (not required to be the "Point-of-Contact" for

Coordination Agreements as used in 23 CCR §357.4 (b) (1) of the GSP Emergency Regulations, or the "Plan manager" as used in 23 CCR §351 (z), 353.4 (b), and §354.6 (c)).



<sup>1</sup>For additional information on DWR's Technical Support Services and other assistance offerings visit, <https://www.water.ca.gov/Programs/Groundwater-Management/Assistance-and-Engagement>

- Agree to complete GSA's responsibilities related to requested technical support service(s) within the defined timeframe.
- Support DWR staff or contractors that are providing technical support service(s).

## Application Process

Applications for TSS will be evaluated on a continuous basis as funding allows.

Applications must be submitted through an online application system made available to the applicant following consultation with DWR Region Offices. **A PDF and Word copy of the application** are provided as a resource to help applicants prepare for the online application.

Applicants are encouraged to contact a Regional Office Coordinator at [sgma\\_rc@water.ca.gov](mailto:sgma_rc@water.ca.gov) to discuss the type and level of services needed prior to submitting an application.

The image shows a screenshot of the 'I. Applicant Background' section of a TSS General Application form. The form includes questions 1 through 4, with question 1 asking to select a groundwater basin/subbasin. Below the form, there is a graph showing 'Groundwater Depth (Feet, MSL)' on the y-axis (ranging from 100 to 170) and 'Date' on the x-axis (ranging from 2/1/14 to 2/1/17). The graph displays several data series: 'Well 5 - Unremediated' (red line), 'Well 5 - Cont. by B4' (blue line), 'Well 5 - Cont. by SBA' (green line), 'Well 5 - Cont. by GSA' (black line), 'BICD 34' (orange line), and 'BICD 58' (purple line). The graph shows fluctuations in groundwater depth over time, with a notable dip around 2015. To the right of the graph is a detailed technical report titled 'MET COMPLETION REPORT' with various tables and charts.



California Department of Water Resources  
1416 Ninth Street  
P.O. Box 942836 Sacramento,  
CA 94236-0001

<http://www.water.ca.gov>

<sup>1</sup>For additional information on DWR's Technical Support Services and other assistance offerings visit, <https://www.water.ca.gov/Programs/Groundwater-Management/Assistance-and-Engagement>