

## Why The Citadel is Right for You

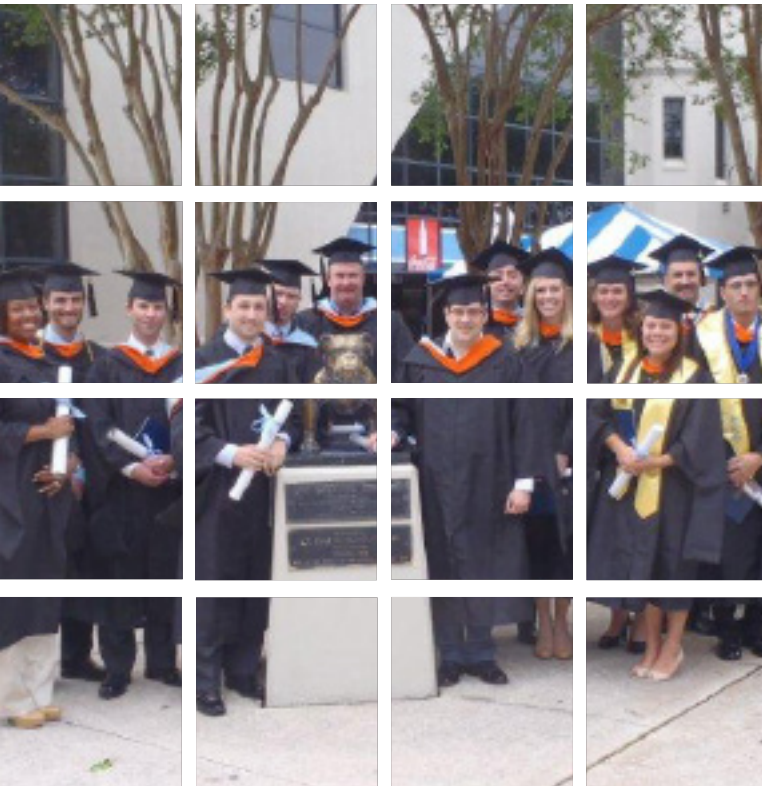
The Citadel is ranked by *U.S. News & World Report* (2012, 2013, 2014, 2015) as the No. 1 Best Public University in the South offering up to a master's degree. Within The Citadel Graduate College, 95% of the faculty have Ph.D.s or the highest degree offered in their particular discipline, which assures that students obtain the knowledge, skills and ideas needed to gain a competitive advantage in their career.

The Citadel is accredited by the Commission on Colleges of the Southern Association of Colleges and Schools, an institutional accrediting body recognized by the Council on Postsecondary Education. The Commission on Colleges of the Southern Association of Colleges and Schools accredits The Citadel to award Bachelor's, Master's, and Specialist degrees.

The courses in the Master of Science in Project Management program are offered at the Lowcountry Graduate Center (LGC). Created through a partnership of the College of Charleston, The Citadel and the Medical University of South Carolina, the LGC was developed to expand the opportunities for graduate education in the region. The LGC is centrally located in North Charleston. For more information about the LGC, visit [www.lowcountrygradcenter.org](http://www.lowcountrygradcenter.org).

## Master of Science in Project Management

School of Engineering



## THE CITADEL GRADUATE COLLEGE

171 Moultrie St. Charleston, SC 29409  
(843) 953-5089 • [www.citadel.edu/graduatecollege](http://www.citadel.edu/graduatecollege)

For more information, please contact

Dr. David Greenburg, PhD, CPL, PMP

(843) 953-9811

[dgreenbu@citadel.edu](mailto:dgreenbu@citadel.edu)

[www.citadel.edu/pmgt](http://www.citadel.edu/pmgt)



## Mission Statement

The mission of The Citadel's Master of Science in Project Management is to equip a diverse professional student population with the applied knowledge, principled leadership, and management skills needed to effectively lead an organization's implementation of projects and multi-disciplinary initiatives.

## About the Program

Each student will be given the opportunity to:

- Develop knowledge and expertise in managing different aspects of technical projects.
- Acquire and apply problem-solving skills in assignments that model the project environment.
- Transfer learned tools and techniques to the workplace.
- Integrate knowledge and performance competencies.
- Learn the leadership and management skills that facilitate career advancement.

The program of study uses PMI's Project Management Body of Knowledge (PMBOK® Guide) as a framework for instruction and knowledge development. The problem-based course of study models a large project environment through the use of industry-related case studies and current events. While focused on knowledge and performance competency development, students' abilities to attain PMP® certification and to progress in their careers are enhanced.

## Program Requirements

The Master of Science in Project Management is conferred upon those candidates who successfully complete an approved program of study consisting of 30 semester hours

of graduate credit. The program includes two core curriculum modules followed by your choice of elective courses.

The two core curriculum modules include:

**Technical Project Management** – A core component of the program comprised of a four-course series in project management, project scheduling, quality management, and operations.

- PMGT 650 Overview of Tech Project Management*
- PMGT 651 Technical Project Planning & Scheduling*
- PMGT 652 Applications of Quality Management*
- PMGT 653 Tech Project Support & Operations*

**Principled Leadership** – A core component of the program encompassing a two-course progression in project manager leadership development and applied leadership concepts.

- PMGT 671 Project Manager Leadership Development*
- PMGT 672 Applied Leadership Concepts*

Elective courses are available in the following areas:

### Technical Program Management

- PMGT 660: Overview of Technical Program Management*
- PMGT 661: Legal and Contractual Aspects of Program Management*
- PMGT 662: Program Development Strategies and Processes*
- PMGT 685: Decision and Risk Analysis*

### Systems Engineering Management

- PMGT 680: Systems Engineering Management Fundamentals*
- PMGT 681: Requirements Development and Management*
- PMGT 682: System Verification and Validation*
- PMGT 684: Human System Integration*
- PMGT 685: Decision & Risk Analysis*

### Leadership

### Civil Engineering

### Electrical Engineering

### Computer Science & Information Assurance

### Business

### Other courses as approved

Ideally, students best prepared to take full advantage of the program would have at least one year of professional experience in administration, management, government contracts, technology development, construction, manufacturing, industrial operations, or information technology.

Please refer to the web site at <http://www.citadel.edu/pmgt> for a complete list of admission and program requirements.

