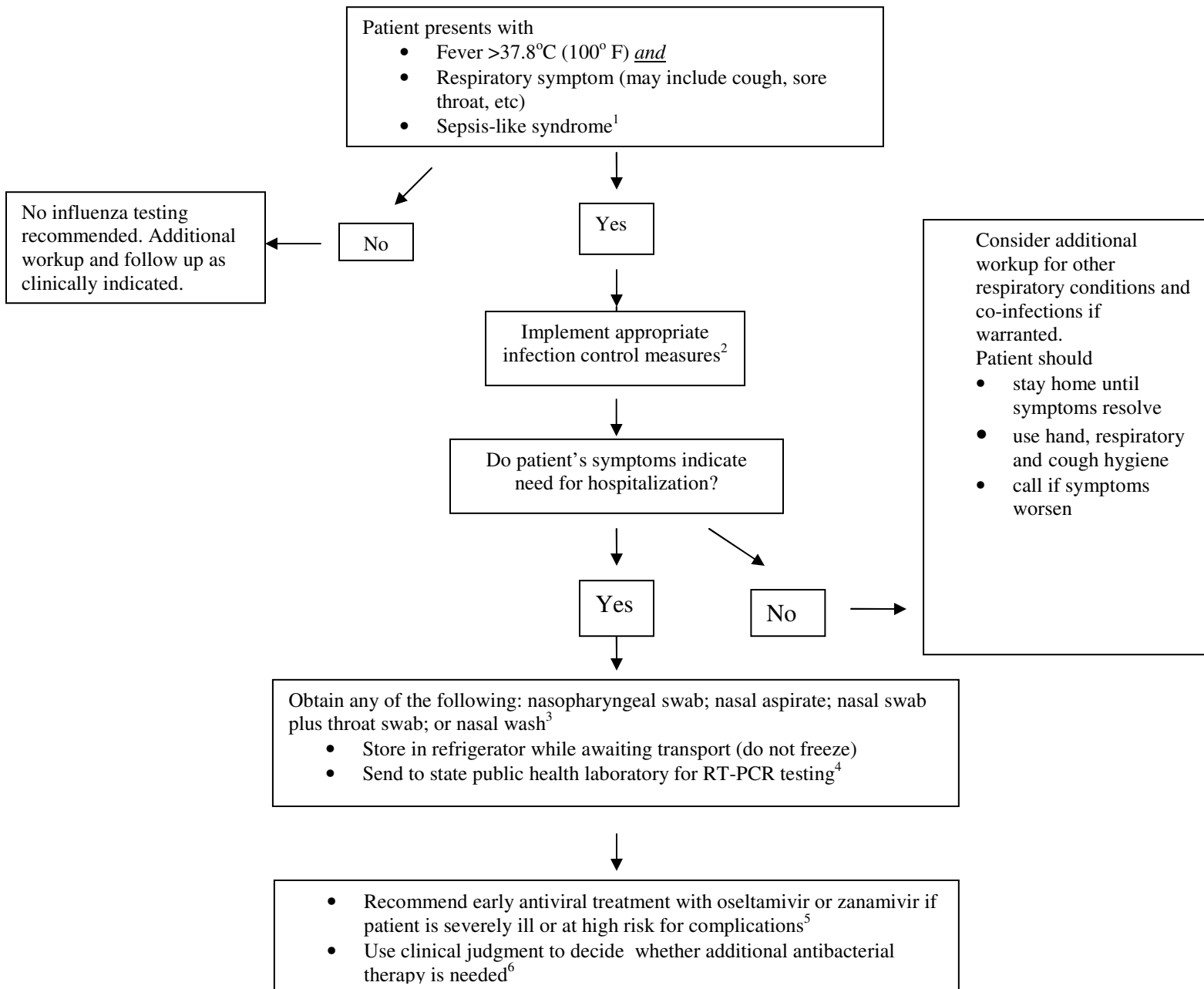


**Algorithm to assist in decisions on testing and treatment for H1N1 (swine flu) Virus
in Regions (state or metropolitan area) with 5 or more Confirmed Cases**



1. As with seasonal influenza, infants, adults ≥ 65 years-old, and persons with compromised immune systems may have atypical presentations.
 2. Information on infection control can be found at: http://www.cdc.gov/swineflu/guidelines_infection_control.htm
 3. Nasal washes require appropriate personal protective equipment. See: http://www.cdc.gov/swineflu/guidelines_infection_control.htm
 4. Real-time polymerase chain reaction (RT-PCR) is the preferred laboratory test for identifying S-OIV. Rapid antigen tests and immunofluorescence tests have unknown sensitivity and specificity to detect S-OIV H1N1. For more information, please see <http://www.cdc.gov/swineflu/specimencollection.htm>.
 5. Information on use of antiviral agents can be found at: <http://www.cdc.gov/swineflu/recommendations.htm>
 6. Interim guidance for clinicians is available at: <http://www.cdc.gov/swineflu/identifyingpatients.htm>