



The electric  
fireplace that  
adds warmth  
to any room.



Simplifyre electric fireplaces emit no combustion by-products, allergens, or aromas, making them ideal solutions for multi-family dwellings, condos and apartments.

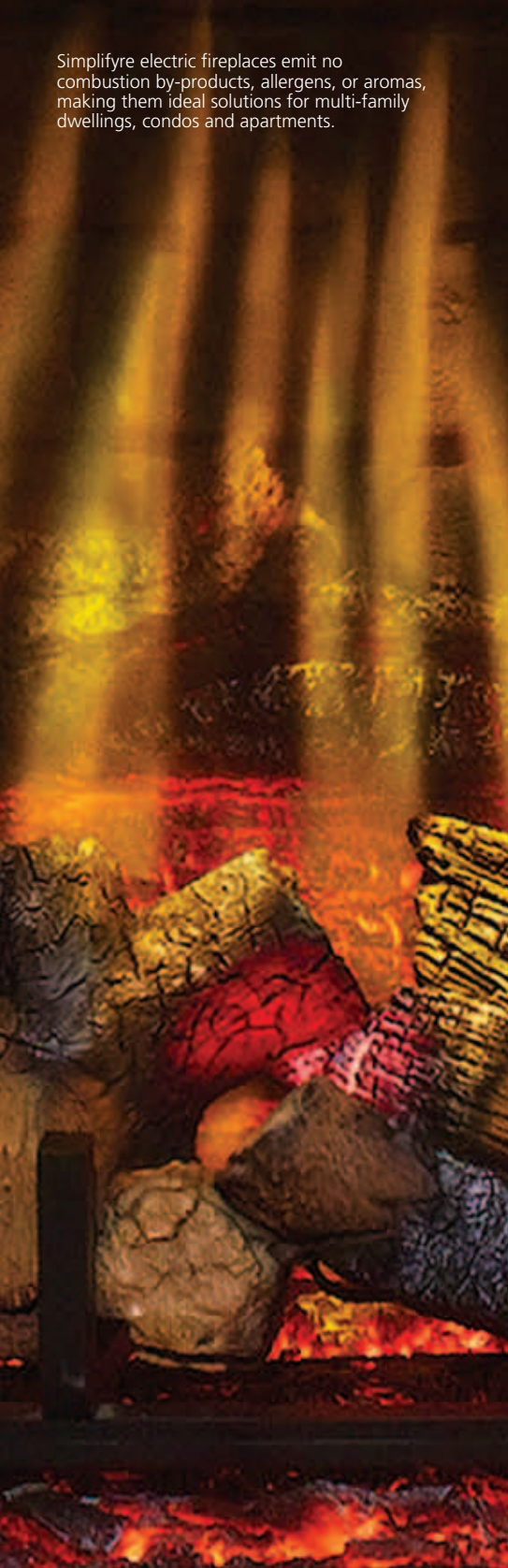
## Simplifyre. The fireplace that goes anywhere, and everywhere.

There's a special warmth you feel in a home that includes a fireplace. It's a more inviting place, even when it's not in use. With a Simplifyre electric fireplace, bring that feeling to any room in the home—no matter where your home is located.

Since no venting or gas fuel lines need be installed, adding a beautiful, natural-looking fireplace with glowing logs and embers in any room is now possible. It also means a Simplifyre electric fireplace can be placed on any wall, no matter the construction type. Only a Simplifyre captures the beauty of a traditional masonry fireplace with a flush hearth, clean face look and 3-D viewing area. What's more, standard 120v electric service ensures that moving some Simplifyre designs—just like furniture—can be done with ease.

Simplifyre has more than thirty preengineered solutions to provide the fireplace you want in the style you prefer. Finish it with a range of door styles and fronts in traditional, transitional and contemporary appearances. Or, select the base fireplace unit alone and encase it in a natural stone, tile, or wood surround to suit your décor.

You've built a special place to call home. Now you can finish it beautifully and economically with Simplifyre.



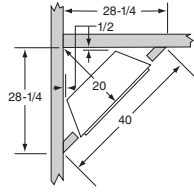
# For the first time, design the fireplace around the room.

## 26" Simplifyre Electric Fireplace

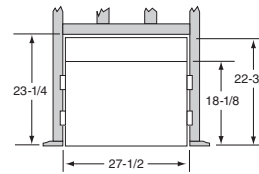
The SFE-26 can be used in three different ways: install it at any height in a room that needs a focal point and build a custom surround or use it as an electric insert in an existing fireplace. The SFE-26 is compact in size, but has a large viewing area so you get 30-50% more fireplace for your money.



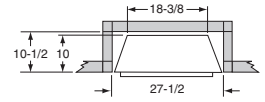
- Simplifyre SFE-26 Base Unit**  
Install the base unit permanently, just as you would any other fireplace.
- Hardwire power kit
  - 26-3/4" W x 18-1/8" H x 10" D
  - Viewing area: 25-5/8" W x 18-1/8" H



Corner Installation



Rough Opening Height



Rough Opening Depth and Width

- Small footprint
- Large viewing area
- 4,500 Btu/Hour output heater
- Standard mesh screen
- Standard wireless On/Off control
- Three decorative fronts, one optional insert front
- Patent pending

### SFE-26 Front and Door Options



- Mission 1 Front**
- Stylish mission front
  - Matte black enamel finish
  - For use on cabinet models
  - 28-3/4" W x 19-1/4" H
- DF-26EM1-BK**



- Mission 2 Front**
- Attractive mission style
  - Matte black enamel finish
  - 30-3/4" W x 23-7/8" H
- DF-26EM2-BK**



- Modern Front**
- Contemporary widescreen
  - Matte black enamel frame
  - Grey tinted glass front
  - 36" W x 22-1/4" H
  - Minimum clearances:
    - 16" above/below
    - 4" left/right
- DF-26MOD-BK**



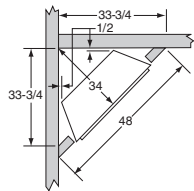
- Insert Front**
- Arched design
  - Matte black enamel finish
  - Non-operable mesh doors
  - 40" W x 27" H
- DF-26IN-BK**

## 35" Simplifyre Electric Fireplace

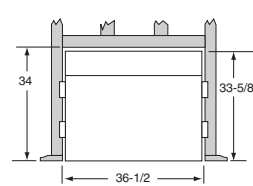
The 35" Simplifyre can be installed at any height on a wall and finished with an optional custom surround. Like our 26" electric fireplace, this fireplace has a small footprint and large 3-D viewing area. It has no visible sheet metal, so you can enjoy the flush hearth, clean face look of a traditional masonry fireplace. And, it looks beautiful all the time—when it's on and when it's off.



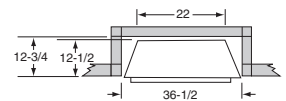
- Simplifyre SFE-35 Base Unit**  
Install the base unit permanently, just as you would any other fireplace.
- 35" W x 33-5/8" H x 12-1/2" D
  - Hardwire power kit
  - Viewing area: 35" W x 30-1/2" H



Corner Installation



Rough Opening Height



Rough Opening Depth and Width

- Small footprint
- Large viewing area
- Four decorative fronts
- Three decorative fronts in rich finishes
- Standard mesh screen
- Standard wireless On/Off control
- Standard brick refractory and remote control
- 3,500 Btu/Hour heater output
- Patent pending

### SFE-35 Front and Door Options



- Mesh Door (Non-operable)**
- Matte black, bronze or pewter finishes
  - 34-7/8" W x 30-3/8" H
- DF-35MD-(BK, BZ or PT)**



- Mission Front**
- Matte black enamel finish
  - 38-1/2" W x 31-1/8" H
- DF-35EM-BK**



- Traditional Front**
- Matte black, or pewter finishes
  - 34-7/8" W x 30-3/8" H
- DF-35ET-(BK, PT)**  
See hardware accessories on the right.

### Traditional Front Hardware Options



**Carriage Hill**  
FSCOMP-CH-(BK, PT)



**Prairie Ridge**  
FSCOMP-PR-(BK, PT)

### Finish Options

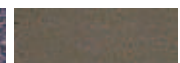
Availability differs according to front



Black (BK)



Pewter (PT)



Bronze (BZ)

# Enjoy your fireplace twice as much.

## 30" Simplifyre See-through Electric Fireplace

Simplifyre developed the first and only see-through fireplace to make the enjoyment of a fire twice as nice. It creates a dramatic room divider, on a full or half wall, and finishes with a custom surround that complements your décor. Then, add a television, custom bookcase, cabinet or open shelving above. Simplifyre lets your design vision come through.



**Fast and Flexible.** Since no venting is required with Simplifyre electric fireplaces, installation is simplified.

- First & only see-through electric fireplace
- 17" wall depth and custom surround required
- Mount at any height on the wall
- Standard wireless On/Off control
- Standard faux bi-fold glass doors on each side
- Hardwire power kit
- Base unit: 30-5/16" W x 26" H x 18" D
- Patent pending

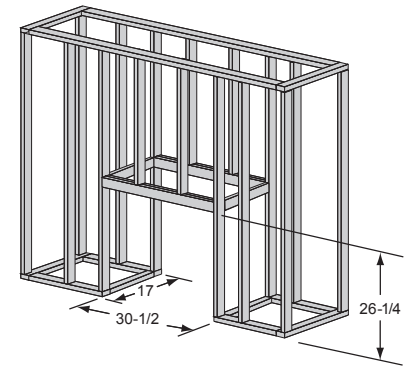
**SFE-ST**

### Additional Options:

- 6-foot power cord

**4050-148**

### Simplifyre See-through Builder Unit



**SIMPLIFYRE**  
electric fireplaces

  
**HEARTH & HOME**  
technologies®

Hearth & Home Technologies  
7571 215th Street West  
Lakeville, Minnesota 55044  
800-927-6841  
[fireplaces.com](http://fireplaces.com)

