

Important Information for READERS, AUTHORS, and LIBRARIANS

- **AuthorChoice** Authors can choose to pay a fee to have their articles publicly available upon publication.
Cost of Publication: the-aps.org/PublicationCost
AuthorChoice: the-aps.org/AuthorChoice
- **CiteTrack:** Receive email alerts when new content matches criteria based on the topics, authors, and articles you want to track.
- **CrossRef:** APS participates in CrossRef initiative, which links to over 5,600 journals worldwide.
- **eTOCs:** Free email notification of new tables of contents as they become available.
- **Google search engine:** All online content searchable through the Google search engine.
- Indexed by the foremost services: **MEDLINE (PubMed)**, **BIOSIS Previews**, and **TRSI Web of Science**.
- **Legacy Content** is an online package of over 100 years of historical scientific research from 13 APS research journals.
- Perpetual electronic archiving in **LOCKSS** and **CLOCKSS** preserves the content of all APS journals.
- Broad readership via global access, personalized email alerts, cross referencing, search engine optimization, and RSS feeds.

Article Types

Research Articles: Peer reviewed articles that present important new research results including the entire contents of a research project. Included are an abstract, an introduction, methods and results sections, a discussion, and citations.

Innovative Methodology: Manuscripts submitted under this category should describe new methods for the recording, collection, and/or analysis of data relevant to understanding how the physiological system works.

Review Articles: Synthesis of state-of-the-art knowledge in a defined area highlighting new questions and pointing to future research directions. They encompass examination of biological processes, systems, and models, and technologies for their study.

Editorials: Provide commentary by the Editor, Associate Editors, and other scientists and experts on issues related to the Journal's mission as well as of general interest to our readers.

Editorial Focus: Commentaries on papers of unusual interest published in the journal that were chosen by the Editor to be highlighted by a brief Editorial Focus commentary.

Letters to the Editor: Short letters reviewed by the appropriate editor and subject to editing and possible abridgment. They do not include original, unpublished data. They also address matters of general interest to the readership.

Subscription Rates for 7 Section Journals (Rates for AJP consolidated only on inside front panel)

AJP-CELL PHYSIOLOGY

INDIVIDUAL
Online Only \$575

MEMBER
Online Only Free

AJP-ENDOCRINOLOGY AND METABOLISM

INDIVIDUAL
Online Only \$410

MEMBER
Online Only Free

AJP-GASTROINTESTINAL AND LIVER PHYSIOLOGY

INDIVIDUAL
Online Only \$440

MEMBER
Online Only Free

AJP-HEART AND CIRCULATORY PHYSIOLOGY

INDIVIDUAL
Online Only \$800

MEMBER
Online Only Free

AJP-LUNG CELLULAR AND MOLECULAR PHYSIOLOGY

INDIVIDUAL
Online Only \$395

MEMBER
Online Only Free

AJP-REGULATORY, INTEGRATIVE AND COMPARATIVE PHYSIOLOGY

INDIVIDUAL
Online Only \$565

MEMBER
Online Only Free

AJP-RENAL PHYSIOLOGY

INDIVIDUAL
Online Only \$410

MEMBER
Online Only Free

FOR INSTITUTION PRICING (ALL AJP SECTION JOURNALS)
Please visit: the-aps.org/publications/subs

What submitting authors are saying about APS's review process...

"Thanks for being so fast on this. I am going to send more manuscripts to AJP!"
—Marc Hershenson, M.D.

"Notably - the review of this submission was of high quality - I am biased based on the acceptance but with 25 years of experience and 150 published articles I am in a position to judge. The reviewers were knowledgeable and balanced - the time lines were excellent. I was impressed - thank you"
—John Parker, M.D.

"Thanks for your message regarding my article published in AJP. Based on my experience as an author as well as a reviewer, I can safely say that it is my favorite journal. The papers submitted to AJP are reviewed expeditiously and fairly. It is a great pleasure for me to note that you, as Editor-in-Chief, are making your best efforts to improve the impact and visibility of the journal."
—Hreday N. Sapru, Ph.D.

Submit your manuscript today! the-aps.org/mm/Publications/Submissions

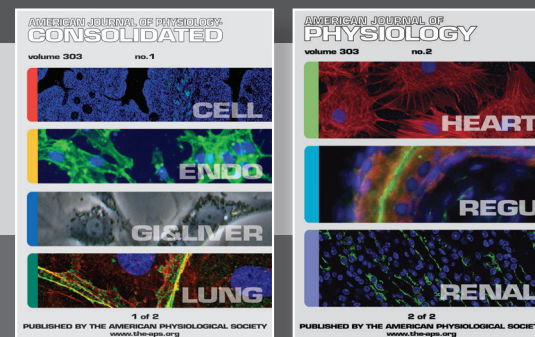


American Physiological Society
9650 Rockville Pike
Bethesda, MD 20814

Call: 301-634-7180 • Fax: 301-634-7418
Web: www.physiology.org
Email: subscriptions@the-aps.org

©The APS logo and American Journal of Physiology are trademarks of the American Physiological Society.

American Journal of Physiology® (AJP consolidated)



The consolidated edition of the AJP comprises these seven highly regarded journals of the American Physiological Society:

- AJP-Cell Physiology*
- AJP-Endocrinology and Metabolism*
- AJP-Gastrointestinal and Molecular Physiology*
- AJP-Heart and Circulatory Physiology*
- AJP-Lung Cellular and Molecular Physiology*
- AJP-Regulatory, Integrative and Comparative Physiology*
- AJP-Renal Physiology*

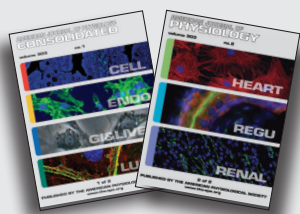
ajpcon.org



A journal of the
**American
Physiological
Society**

American Journal of Physiology (consolidated)

- ★★ Manuscripts published online within days of acceptance!
- ★★ Subscription Rates: See Back Panel
- ★★ APS Contact Information: See Back Panel



Subscription Rates (AJP consolidated only)

	Domestic	International
Individual		
Print and Online	\$3,700	\$4,260
Print Only	\$3,585	\$4,155
Online Only	\$3,035	\$3,035

INSTITUTION

For institutional rates, please visit:
the-aps.org/publications/subs

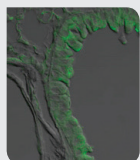
The consolidated edition of the *AJP* comprises these seven highly regarded Journals of the American Physiological Society:

- *AJP–Cell Physiology*®
- *AJP–Endocrinology and Metabolism*®
- *AJP–Gastrointestinal and Liver Physiology*®
- *AJP–Heart and Circulatory Physiology*®
- *AJP–Lung Cellular and Molecular Physiology*®
- *AJP–Regulatory, Integrative and Comparative Physiology*®
- *AJP–Renal Physiology*®

The consolidated *American Journal of Physiology* (*AJP*) ranks as one of the most frequently cited publications among all physiology journals listed in the Journal Citation Index. Published in two monthly volumes by the American Physiological Society, the consolidated *AJP* brings you approximately 2,000 articles encompassing 19,000 pages annually.

As your comprehensive source for the full spectrum of current physiological research at a single low subscription price, the consolidated *AJP* is an unbeatable value.

American Journal of Physiology– Cell Physiology®

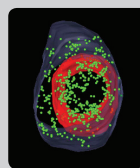


EDITOR-IN-CHIEF: Josephine C. Adams, Ph.D.
eISSN: 1522-1563

Published online, twice monthly.
Printed monthly in the consolidated version of *AJP*.

The *American Journal of Physiology–Cell Physiology* is dedicated to innovative approaches to the study of cell and molecular physiology. Contributions that use cellular and molecular approaches to shed light on mechanisms of physiological control at higher levels of organization also appear regularly. Manuscripts dealing with the structure and function of cell membranes, contractile systems, cellular organelles, and membrane channels, transporters, and pumps are encouraged. Studies dealing with integrated regulation of cellular function, including mechanisms of signal transduction, development, gene expression, cell-to-cell interactions, and the cell physiology of pathophysiological states, are also eagerly sought. Interdisciplinary studies that apply the approaches of biochemistry, biophysics, molecular biology, morphology, and immunology to the determination of new principles in cell physiology are especially welcome.

American Journal of Physiology– Endocrinology and Metabolism®



EDITOR-IN-CHIEF: Charles Lang, Ph.D.

eISSN: 1522-1555

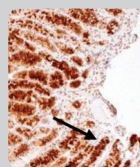
Published online, twice monthly.

Printed monthly in the consolidated version of *AJP*.

The *American Journal of Physiology–Endocrinology and Metabolism* publishes original, mechanistic studies on the physiology of endocrine and metabolic systems.

Molecular, subcellular, and cellular studies in whole animals or humans will be considered. Specific themes include, but are not limited to, mechanisms of hormone and growth factor action; regulation of metabolism and energy balance; integrative organ cross talk; paracrine and autocrine control of endocrine cell performance; function and activation of hormone receptors; endocrine or metabolic control of channels, transporters and membrane function; differentiation of endocrine and reproductive cell function; temporal analysis of hormone secretion and metabolism; and mathematical/kinetic modeling and analysis of hormone action or metabolism. Novel molecular, immunological, or biophysical studies of hormone action are also welcome.

American Journal of Physiology– Gastrointestinal and Liver Physiology®



EDITOR-IN-CHIEF: Nigel Bunnett, Ph.D.

eISSN: 1522-1547

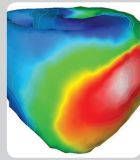
Published online, twice monthly.

Printed monthly in the consolidated version of *AJP*.

The *American Journal of Physiology–Gastrointestinal and Liver Physiology* publishes original articles pertaining to all aspects of research involving normal or abnormal function of the

gastrointestinal tract, hepatobiliary system, and pancreas. Authors are encouraged to submit manuscripts dealing with growth and development, digestion, secretion, absorption, metabolism, and motility relative to these organs, as well as research reports dealing with immune and inflammatory processes and with neural, endocrine, and circulatory control mechanisms that affect these organs. Reports of research utilizing molecular biological, cell biological, immunological, biochemical, and morphological approaches that contribute to knowledge of normal physiology or pathophysiology of these organs are especially welcomed. Research ranging from molecular and cellular events to whole animal studies and translational studies in human samples is appropriate.

American Journal of Physiology– Heart and Circulatory Physiology®



EDITOR-IN-CHIEF: Irving Zucker, Ph.D.

eISSN: 1522-1539

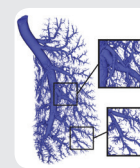
Published online, twice monthly.

Printed monthly in the consolidated version of *AJP*.

The *American Journal of Physiology–Heart and Circulatory Physiology* publishes original investigations on the physiology of the heart, blood vessels, and lymphatics,

including experimental and theoretical studies of cardiovascular function at all levels of organization ranging from the intact animal to the cellular, subcellular, and molecular levels. It embraces new descriptions of these functions and of their control systems, as well as their bases in biochemistry, biophysics, genetics, and cell biology. Preference is given to research that provides significant new insights into the mechanisms that determine the performance of the normal and abnormal heart and circulation.

American Journal of Physiology– Lung Cellular and Molecular Physiology®



EDITOR-IN-CHIEF: Sadis Matalon, Ph.D.

eISSN: 1522-1504

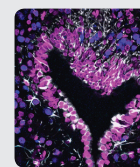
Published online, twice monthly.

Printed monthly in the consolidated version of *AJP*.

The *American Journal of Physiology–Lung Cellular and Molecular Physiology* publishes original research covering the broad scope of molecular, cellular,

and integrative aspects of normal and abnormal function of cells and components of the respiratory system. Areas of interest include conducting airways, pulmonary circulation, lung endothelial and epithelial cells, the pleura, neuroendocrine and immunologic cells in the lung, neural cells involved in control of breathing, and cells of the diaphragm and thoracic muscles. The processes to be covered in the Journal include gas-exchange, metabolic control at the cellular level, intracellular signaling, gene expression, genomics, macromolecules and their turnover, cell-cell and cell-matrix interactions, cell motility, secretory mechanisms, membrane function, surfactant, matrix components, mucus and lining materials, lung defenses, macrophage function, transport of salt, water and protein, development and differentiation of the respiratory system, and response to the environment.

American Journal of Physiology–Regulatory, Integrative and Comparative Physiology®



EDITOR-IN-CHIEF: Willis Samson, Ph.D.

eISSN: 1522-1490

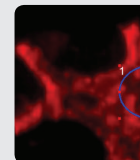
Published online, twice monthly.

Printed monthly in the consolidated version of *AJP*.

The *American Journal of Physiology–Regulatory, Integrative and Comparative Physiology* publishes original investigations that illuminate normal or abnormal

regulation and integration of physiological mechanisms at all levels of biological organization, ranging from molecules to humans, including clinical investigations. Major areas of emphasis include regulation in genetically modified animals; model organisms and comparative functional genomics; development and tissue plasticity; neurohumoral control of circulation and hypertension; local control of circulation; cardiac and renal integration; thirst and volume, electrolyte homeostasis; appetite and obesity, and inflammation and cytokines. The editors wish to attract papers from physiologists who are united by broad interests in regulation, integration, and homeostasis in health and in disease.

American Journal of Physiology– Renal Physiology®



EDITOR-IN-CHIEF: Phillip Darwin Bell, Ph.D.

eISSN: 1522-1466

Published online, twice monthly.

Printed monthly in the consolidated version of *AJP*.

The *American Journal of Physiology–Renal Physiology* publishes original manuscripts on a broad range of subjects relating to the kidney, urinary tract, and their

respective cells and vasculature, as well as to the control of body fluid volume and composition. Studies may involve human or animal models, individual cell types, and isolated membrane systems. Authors are encouraged to submit reports on research using a wide range of approaches to the study of function in these systems, such as biochemistry, immunology, genetics, mathematical modeling, molecular biology, and physiological methodologies. Papers on the pathophysiological basis of disease processes of the kidney, urinary tract, and regulation of body fluids are also encouraged.