

# University of Florida

## Institute of Food and Agricultural Sciences

### BRIEFING BOOK (2013)





## Table of Contents

- 5** UF/IFAS Mission and Locator Map
- 6** Economic Impacts
- 6** Output Impacts
- 7** History
- 7** Teaching
- 8** Research
- 8** Extension
- 9** Human Resources
- 9** Facilities
- 10** Academic Initiatives
- 11** Research Initiatives
- 12** Extension Initiatives
- 13** UF/IFAS Extension Office Locations
- 14** International Programs
- 15** Expenditures by Funding Source
- 16** Organizational Charts
- 18** Contacts



UF/IFAS was created in 1964 to consolidate the agricultural, natural resources, and life sciences teaching, research and extension programs at the University of Florida. UF/IFAS is a federal-state-county partnership throughout Florida, dedicated to improving lives by sharing information about agriculture, natural resources and life sciences.

## Teaching

- The College of Agricultural and Life Sciences
- The School of Natural Resources and Environment
- Portions of the College of Veterinary Medicine
- More than 5,100 students, including more than 1,200 graduate students
- Doctoral programs in 21 fields

## Research

- The Florida Agricultural Experiment Station supports research programs at 12 regional Research and Education Centers.
- Providing research support at four Research and Demonstration sites (farms), one research forest, and one biological field station
- Supporting Florida's agriculture, natural resources and related food industries, which make value-added contributions of \$108.7 billion to the gross domestic product of the state economy
- Enhancing Florida's global competitiveness in these industries
- Reducing costs to consumers

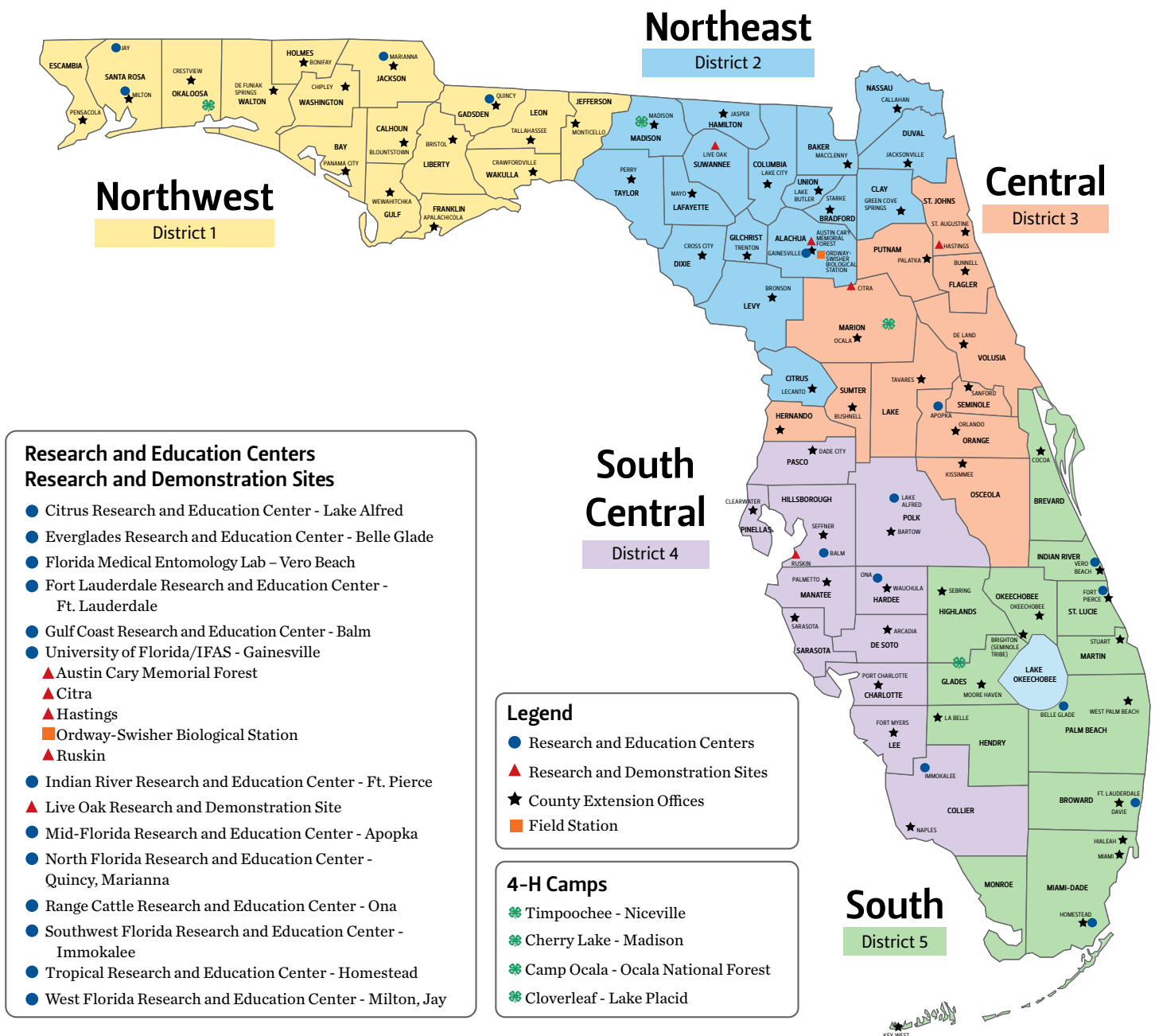
## Extension

- The UF/IFAS Extension has at least one office in every county.
- Funded by state, federal and local county dollars
- Nearly five million public contacts made by Extension in 2012
- Programs in Agriculture; Natural Resources; 4-H; Family, Youth and Community Sciences; Master Gardener; Food and Nutrition; Emergency Preparedness; Energy and Environmental Conservation; and more

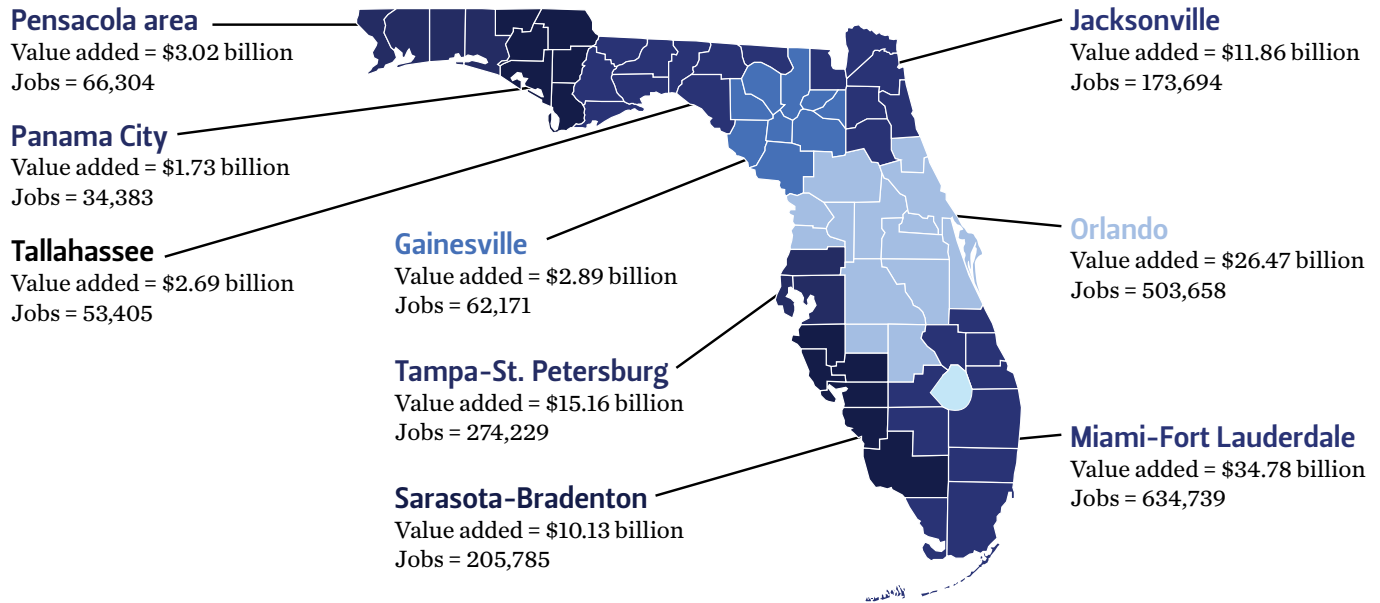
# UF/IFAS Mission

The University of Florida’s Institute of Food and Agricultural Sciences (UF/IFAS) is a federal-state-county partnership dedicated to developing knowledge in agriculture, human and natural resources, and the life sciences, and enhancing and sustaining the quality of human life by making that information accessible. While extending into every community of the state, UF/IFAS has developed an international reputation for its accomplishments in teaching, research and extension. Because of this mission and the diversity of Florida’s climate and agricultural commodities, IFAS has facilities located throughout Florida. IFAS provides research and development in support of Florida’s agriculture, natural resources and related food industries, which in 2010 made value-added contributions of \$108.7 billion to the gross domestic product of the state economy.

## UF/IFAS Statewide Facilities

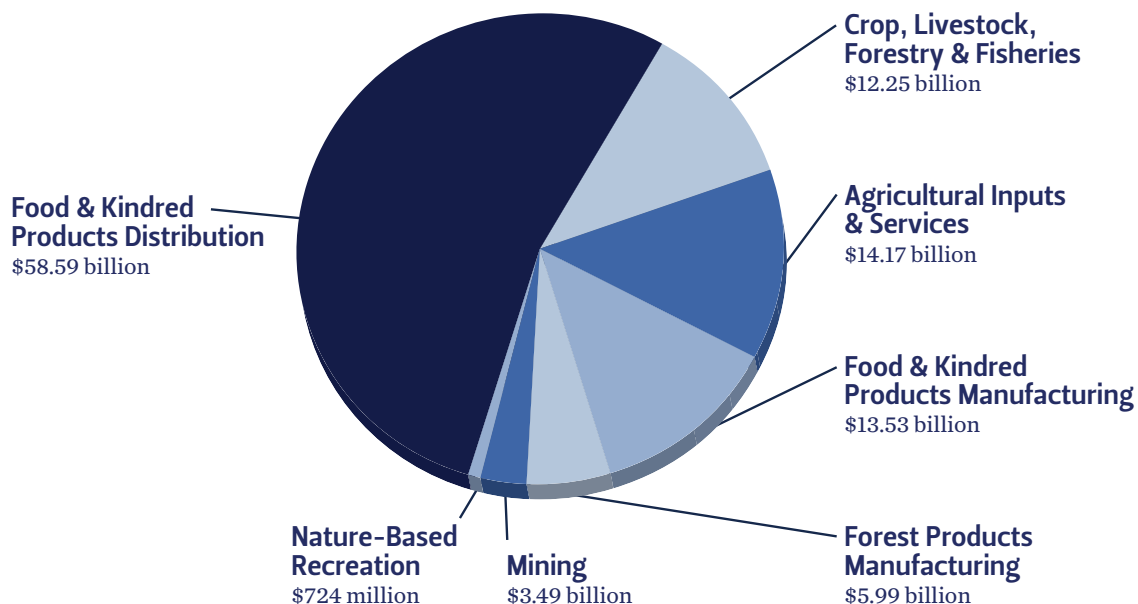


## Economic impacts of agricultural, food and natural resource industries in Florida regions, 2010



Total value-added economic impacts of agriculture, natural resources and related food industries on value added and employment in economic regions of Florida, 2010. Values expressed in 2010 dollars using GDP Implicit Price Deflator (U.S. Commerce Dept.). Source: Implan data for Florida (2012, MIG, Inc.), compiled by Alan W. Hodges, UF/IFAS, Food & Resource Economics. See <http://edis.ifas.ufl.edu/fe906>.

## Output impacts of agricultural, food and natural resource industries in Florida (revenue), 2010



## UF/IFAS History

While the University of Florida traces its roots to 1853 and the establishment of the state-funded East Florida Seminary, UF/IFAS traces its roots to the Morrill Act of 1862, which established the land-grant university system. On July 2, 1862, President Abraham Lincoln signed into law what is generally referred to as the Land-Grant Act. The new piece of legislation introduced by U.S. Rep. Justin Smith Morrill of Vermont granted to each state 30,000 acres of public land for each senator and representative under apportionment based on the 1860 census. Proceeds from the sale of these lands were to be invested in a perpetual endowment fund that would provide support for colleges of agriculture and mechanical arts in each of the states. The establishment of Florida Agricultural College at Lake City in 1884 under the Morrill Act marked the beginning of what became the College of Agriculture of the University of Florida in 1906.

Florida's governing body for higher education created the Institute of Food and Agricultural Sciences in April 1964, by reorganizing UF's College of Agriculture, School of Forestry, Agricultural Experiment Station, and the Cooperative Extension Service into a single unit. Today UF/IFAS includes extension offices in each of the state's 67 counties, 12 Research and Education Centers with a total of 20 locations (including demonstration sites) throughout Florida, the College of Agricultural and Life Sciences, the School of Natural Resources and Environment, and portions of the College of Veterinary Medicine.

## Teaching

### College of Agricultural and Life Sciences

The College of Agricultural and Life Sciences (CALs) offers students an education that results in knowledge and skills for employment, productive citizenship and lifelong learning. With more than 20 undergraduate majors, the college is an educational leader in the areas of food, agriculture, natural resources and life sciences as they relate to human resources, the environment and communities. Graduate degrees are offered in every department and school.

The college enrolls more than 5,100 students, including more than 1,200 graduate students. This student body is among the most diverse of agricultural and natural resources colleges within land-grant institutions in the nation. A majority of CALs students are women, 23 percent are minorities, and 13 percent are of international origin. Known for its student-centered focus, the college prides itself on producing society-ready graduates. In addition to the Gainesville campus programs, the college offers baccalaureate degrees, graduate degrees and teacher certification courses at selected IFAS Research and Education Centers. Distance education courses, degree programs and certificates are also offered.

Through productive partnerships with private business, industry and research organizations, CALs students enjoy superior internships, and graduates benefit from outstanding employment opportunities. Students gain a global perspective through a variety of study-abroad programs, and they participate in research and development projects with premier faculty researchers.

### Statewide undergraduate programs

Recognizing the special needs of nontraditional students, CALs established Bachelor of Science degree programs at IFAS Research and Education Centers in Apopka, Fort Lauderdale, Fort Pierce, Milton and Plant City. Degree programs include agricultural education, geomatics, plant sciences and natural resource conservation. Students must have an associate's degree to enter these programs, which are partnerships with local community colleges and sister state universities. Two Bachelor of Science programs, microbiology and cell science and interdisciplinary studies-environmental management in agriculture and natural resources, are now offered by distance education.

### College of Veterinary Medicine

The College of Veterinary Medicine is jointly administered through the university's Health Science Center and IFAS. Support from UF/IFAS includes resources for large animal disease research, undergraduate instruction and veterinary extension.

### Total alumni (Feb. 2012)

- Agricultural and Life Sciences – 29,509 (Residing in all 50 states and 111 other countries)
- Veterinary Medicine – 2,315 (Residing in all 50 states and 6 other countries)

## Research

The UF/IFAS research mission is to invent, discover and develop knowledge to enhance the agriculture and natural resources of Florida. Faculty members pursue fundamental and applied research that furthers understanding of natural and human systems. Research is supported by state and federally appropriated funds and supplemented by grants and contracts. IFAS' sponsored research awards for the year 2011-2012 exceeded \$112 million.

The Florida Agricultural Experiment Station administers and supports research programs in UF/IFAS. The research program was created in 1887 by federal legislation known as the Hatch Act, a follow-up to the 1862 Morrill Act that established U.S. land-grant universities. The research programs support 496 active tenure and non-tenure faculty with a research appointment in 14 academic departments on UF's Gainesville campus, two schools, two graduate research programs, and at 12 Research and Education Centers around the state.

## Extension

The 1914 Smith-Lever Act provided federal support for land-grant institutions to offer educational programs to enhance the application of useful and practical information beyond their campuses through cooperative extension efforts with state and local communities. UF/IFAS Extension provides Floridians with lifelong learning programs in partnership with county government, the United States Department of Agriculture and Florida A&M University. The educational programs offered in each county respond to the local needs of residents, schools, regulatory agencies, community organizations and industry.

Programs promote sustainable agriculture, environmental stewardship, financial literacy, food nutrition and safety, consumer and parenting skills, and provide leadership opportunities for youth through programs in areas such as science, technology, engineering and math (STEM), entrepreneurship and core life skills.

By partnering with local government, advisory committees, concerned citizens, commodity groups and the youth of Florida, UF/IFAS Extension creates an important link between the public and the research conducted on campus and at 12 Research and Education Centers. Solutions for Your Life is the official website for UF/IFAS Extension. Here, IFAS faculty expertise and publications are available online for your convenience. Learn about many aspects of agriculture, the environment, issues for consumers and families, taking care of your lawn and garden, sustainability, disaster preparedness and recovery, 4-H youth development and more. The URL is <http://www.solutionsforyourlife.ufl.edu>.



## Human Resources

Because the number of employees is constantly changing, the following “snapshot” of IFAS employees was based on October 12, 2012 payroll information.

	On Campus	Off Campus	County	Total
<b>State Supported</b>				
Faculty	316.47	124.71	262.78	703.96
Staff	457.49	316.41	6.00	779.90
<b>Totals</b>	<b>773.96</b>	<b>441.12</b>	<b>268.78</b>	<b>1483.86</b>
<b>Grant Supported</b>				
Faculty**	96.45	34.45	30.73	161.63
Staff	232.10	86.90	4.00	323.00
<b>Totals</b>	<b>328.55</b>	<b>121.35</b>	<b>34.73</b>	<b>484.63</b>

\*\*Post-doc employees are no longer considered faculty and are not reflected in this count.

## Facilities

In addition to extension offices in each of Florida’s 67 counties, IFAS has 1,249 buildings, 3,622,462 gross square feet and 27,279 acres throughout the state, including facilities on the University of Florida campus. These facilities are used for teaching, research and demonstration:

- 16 on-campus academic departments and schools
- UF/IFAS Extension offices in all 67 counties (counties operate and maintain)
- 12 Research and Education Centers (RECs) located throughout the state
- 4 Research and Demonstration sites, 1 research forest, and 1 biological field station
- 5 statewide locations with undergraduate degree programs

# Academic Initiatives: Preparing tomorrow's workforce

## Mission

The mission of the College of Agricultural and Life Sciences (CALs) is to provide undergraduate and graduate students with a high-quality education that results in knowledge and abilities for gainful employment and additional education, productive citizenship, and lifelong learning in the areas of food, agriculture, natural resources and life sciences as they relate to human resources, the environment, individual communities and a global society. To achieve excellence and fulfill the IFAS mission, CALs promotes the following core values:

- Respect, honesty, integrity, fairness and cooperation
- Academic excellence grounded in science
- Diversity of people and ideas
- Programs responsive to the needs of students, Florida and the world
- Opportunities for student growth and development
- Quality teaching and advising
- Service to faculty, students, staff and stakeholders
- Fulfilling the land-grant mission in partnership with research and extension

## Goals

- Improve learning and teaching effectiveness
- Attract and retain a diverse, high-quality student population
- Provide relevant student development programs
- Enhance the international dimensions of the curricula and programs
- Expand opportunities for course and degree completion beyond the Gainesville campus
- Coordinate efforts of CALs Alumni and Friends

## Research Initiatives: UF/IFAS research for the 21st century

### Mission

The research mission of IFAS, conducted by the Florida Agricultural Experiment Station, is to discover new scientific knowledge, encourage innovative study and create applications based on sound science — delivering solutions to the challenges facing agriculture, natural resources and life sciences in the State of Florida, our country and the world.

### Goals

- Building agricultural systems research that is effective in preserving the diversity, building the strength and ensuring the development and economic sustainability of Florida's agriculture.
- Facilitating research within UF/IFAS that focuses on natural resources and environmental systems and emphasizes stewardship of the land and values of diversity in ecological systems. Programs serve to discover the underlying science of our natural resources while finding novel applications to preserve, protect and manage Florida's ecosystems.
- Focusing on human systems research and agriculture's impact on society and human behavioral issues related to food, natural resources, the environment and agriculture.

By seeking ways to enable the success of individual faculty and empowering multidisciplinary teams, we will achieve these goals and will strive to identify and meet future opportunities to further our research mission.

## Extension Initiatives: Meeting Florida's needs

### Mission

The UF/IFAS Extension mission is to develop educational programs targeting critical issues throughout Florida. These will be achieved by continuing to partner with clientele, volunteers, county governments, and public and private agencies. Florida A&M University is also a part of extension in Florida and is involved in many extension programs.

### Goals

Teams of faculty and staff statewide focus on seven key areas:

- Increasing the sustainability, profitability and competitiveness of agricultural and horticultural enterprises
- Enhancing and protecting water quality, quantity and supply
- Enhancing and conserving Florida's natural resources and environmental quality
- Producing and conserving traditional and alternative forms of energy
- Empowering individuals and families to build healthy lives and achieve social and economic success
- Supporting urban and rural community resources and economic development
- Preparing youth to be responsible citizens and productive members of the workforce

# UF/IFAS Extension | We're in every Florida county, including yours.

## Alachua County

2800 NE 39th Ave  
Gainesville, FL 32609  
Phone: (352) 955-2402

## Baker County

1025 W Macclenny Ave  
Macclenny, FL 32063  
Phone: (904) 259-3520

## Bay County

2728 E 14th St  
Panama City, FL 32401  
Phone: (850) 784-6105

## Bradford County

2266 N Temple Ave  
Starke, FL 32091  
Phone: (904) 966-6224

## Brevard County

3695 Lake Dr  
Cocoa, FL 32926  
Phone: (321) 633-1702

## Broward County

3245 College Ave  
Davie, FL 33314  
Phone: (954) 357-5270

## Calhoun County

20816 Central Ave E, Ste 1  
Blountstown, FL 32424  
Phone: (850) 674-8323

## Charlotte County

25550 Harbor View Rd, Ste 3  
Port Charlotte, FL 33980  
Phone: (941) 764-4340

## Citrus County

3650 W Sovereign Path, Ste 1  
Lecanto, FL 34461  
Phone: (352) 527-5700

## Clay County

2463 SR 16, W  
Green Cove Springs, FL 32043  
Phone: (904) 284-6355

## Collier County

14700 Immokalee Rd  
Naples, FL 34120  
Phone: (239) 353-4244

## Columbia County

164 SW Mary Ethel Ln  
Lake City, FL 32025  
Phone: (386) 752-5384

## DeSoto County

2150 NE Roan St  
Arcadia, FL 34266  
Phone: (863) 993-4846

## Dixie County

99 NE 121st St  
Cross City, FL 32628  
Phone: (352) 498-1237

## Duval County

1010 N McDuff Ave  
Jacksonville, FL 32254  
Phone: (904) 255-7450

## Escambia County

3740 Stefani Rd  
Cantonment, FL 32533  
Phone: (850) 475-5230

## Flagler County

150 Sawgrass Rd  
Bunnell, FL 32110  
Phone: (386) 437-7464

## Franklin County

66 4th St  
Apalachicola, FL 32320  
Phone: (850) 653-9337

## Gadsden County

2140 W Jefferson St  
Quincy, FL 32351  
Phone: (850) 875-7255

## Gilchrist County

125 E Wade St  
Trenton, FL 32693  
Phone: (352) 463-3174

## Glades County

900 US Hwy 27, SW  
Moore Haven, FL 33471  
Phone: (863) 946-0244

## Gulf County

200 N 2nd St  
Wewahitchka, FL 32465  
Phone: (850) 639-3200

## Hamilton County

1143 US Hwy 41, NW  
Jasper, FL 32052  
Phone: (386) 792-1276

## Hardee County

507 Civic Center Dr  
Wauchula, FL 33873  
Phone: (863) 773-2164

## Hendry County

1085 Pratt Blvd  
Labelle, FL 33935  
Phone: (863) 674-4092

## Hernando County

1653 Blaise Dr  
Brooksville, FL 34601  
Phone: (352) 754-4433

## Highlands County

4509 George Blvd  
Sebring, FL 33875  
Phone: (863) 402-6540

## Hillsborough County

5339 S CR 579  
Seffner, FL 33584  
Phone: (813) 744-5519

## Holmes County

1169 E Hwy 90  
Bonifay, FL 32425  
Phone: (850) 547-1108

## Indian River County

1028 20th Pl, Ste D  
Vero Beach, FL 32960  
Phone: (772) 770-5030

## Jackson County

2741 Pennsylvania Ave, Ste 3  
Marianna, FL 32448  
Phone: (850) 482-9620

## Jefferson County

275 N Mulberry St  
Monticello, FL 32344  
Phone: (850) 342-0187

## Lafayette County

176 SW Community Cr, Ste D  
Mayo, FL 32066  
Phone: (386) 294-1279

## Lake County

1951 Woodlea Rd  
Tavares, FL 32778  
Phone: (352) 343-4101

## Lee County

3406 Palm Beach Blvd  
Ft. Myers, FL 33916  
Phone: (239) 533-4327

## Leon County

615 Paul Russell Rd  
Tallahassee, FL 32301  
Phone: (850) 606-5200

## Levy County

625 N Hathaway Ave, Alt 27  
Bronson, FL 32621  
Phone: (352) 486-5131

## Liberty County

10405 NW Theo Jacobs Way  
Bristol, FL 32321  
Phone: (850) 643-2229

## Madison County

184 NW College Loop  
Madison, FL 32340  
Phone: (850) 973-4138

## Manatee County

1303 17th St, W  
Palmetto, FL 34221  
Phone: (941) 722-4524

## Marion County

2232 NE Jacksonville Rd  
Ocala, FL 34470  
Phone: (352) 671-8400

## Martin County

2614 SE Dixie Hwy  
Stuart, FL 34996  
Phone: (772) 288-5654

## Miami-Dade County

18710 SW 288th St  
Homestead, FL 33030  
Phone: (305) 248-3311

## Monroe County

1100 Simonton St, Rm 2-260  
Key West, FL 33040  
Phone: (305) 292-4501

## Nassau County

543350 US Hwy 1  
Callahan, FL 32011  
Phone: (904) 879-1019

## Okaloosa County

3098 Airport Rd  
Crestview, FL 32539  
Phone: (850) 689-5850

## Okeechobee County

458 Hwy 98, N  
Okeechobee, FL 34972  
Phone: (863) 763-6469

## Orange County

6021 S Conway Rd  
Orlando, FL 32812  
Phone: (407) 254-9200

## Osceola County

1921 Kissimmee Valley Ln, Ste A  
Kissimmee, FL 34744  
Phone: (321) 697-3000

## Palm Beach County

559 N Military Tr  
West Palm Beach, FL 33415  
Phone: (561) 233-1700

## Pasco County

36702 SR 52  
Dade City, FL 33525  
Phone: (352) 518-0156

## Pinellas County

12520 Ulmerton Rd  
Largo, FL 33774  
Phone: (727) 582-2100

## Polk County

1702 Hwy 17-98, S  
Bartow, FL 33831  
Phone: (863) 519-8677

## Putnam County

111 Yelvington Rd, Ste 1  
E Palatka, FL 32131  
Phone: (386) 329-0318

## Santa Rosa County

6263 Dogwood Dr  
Milton, FL 32570  
Phone: (850) 623-3868

## Sarasota County

6700 Clark Rd, Twin Lakes Park  
Sarasota, FL 34241  
Phone: (941) 861-9900

## Seminole County

250 W County Home Rd  
Sanford, FL 32773  
Phone: (407) 665-5560

## Seminole Tribe of Florida

15465 Reservation Rd  
Okeechobee, FL 34974  
Phone: (863) 763-5020

## St. Johns County

3125 Agricultural Center Dr  
St. Augustine, FL 32092  
Phone: (904) 209-0430

## St. Lucie County

8400 Picos Rd, Ste 101  
Ft. Pierce, FL 34945  
Phone: (888) 462-1660

## Sumter County

7620 SR 471, Ste 2  
Bushnell, FL 33513  
Phone: (352) 793-2828

## Suwannee County

1302 11th St, SW  
Live Oak, FL 32064  
Phone: (386) 362-2771

## Taylor County

203 Forest Park Dr  
Perry, FL 32348  
Phone: (850) 838-3508

## Union County

25 NE 1st St  
Lake Butler, FL 32054  
Phone: (386) 496-2321

## Volusia County

3100 E New York Ave  
DeLand, FL 32724  
Phone: (386) 822-5778

## Wakulla County

84 Cedar Ave  
Crawfordville, FL 32327  
Phone: (850) 926-3931

## Walton County

732 N 9th St, Ste B  
DeFuniak Springs, FL 32433  
Phone: (850) 892-8172

## Washington County

1424 Jackson Ave, Ste A, Hwy 90  
Chipley, FL 32428  
Phone: (850) 638-6180

## UF/IFAS International Programs

UF/IFAS has nearly seven decades of experience with global programs. Through multi-institutional linkages in research, education and outreach, international efforts contribute to the global development of agricultural and natural resources. International Programs (IP) is responsible for coordinating, nurturing and administering global faculty efforts; promoting international expertise; fostering collaborative partnerships; enhancing multidisciplinary activities; and raising the visibility of international activities as a major component of IFAS efforts.

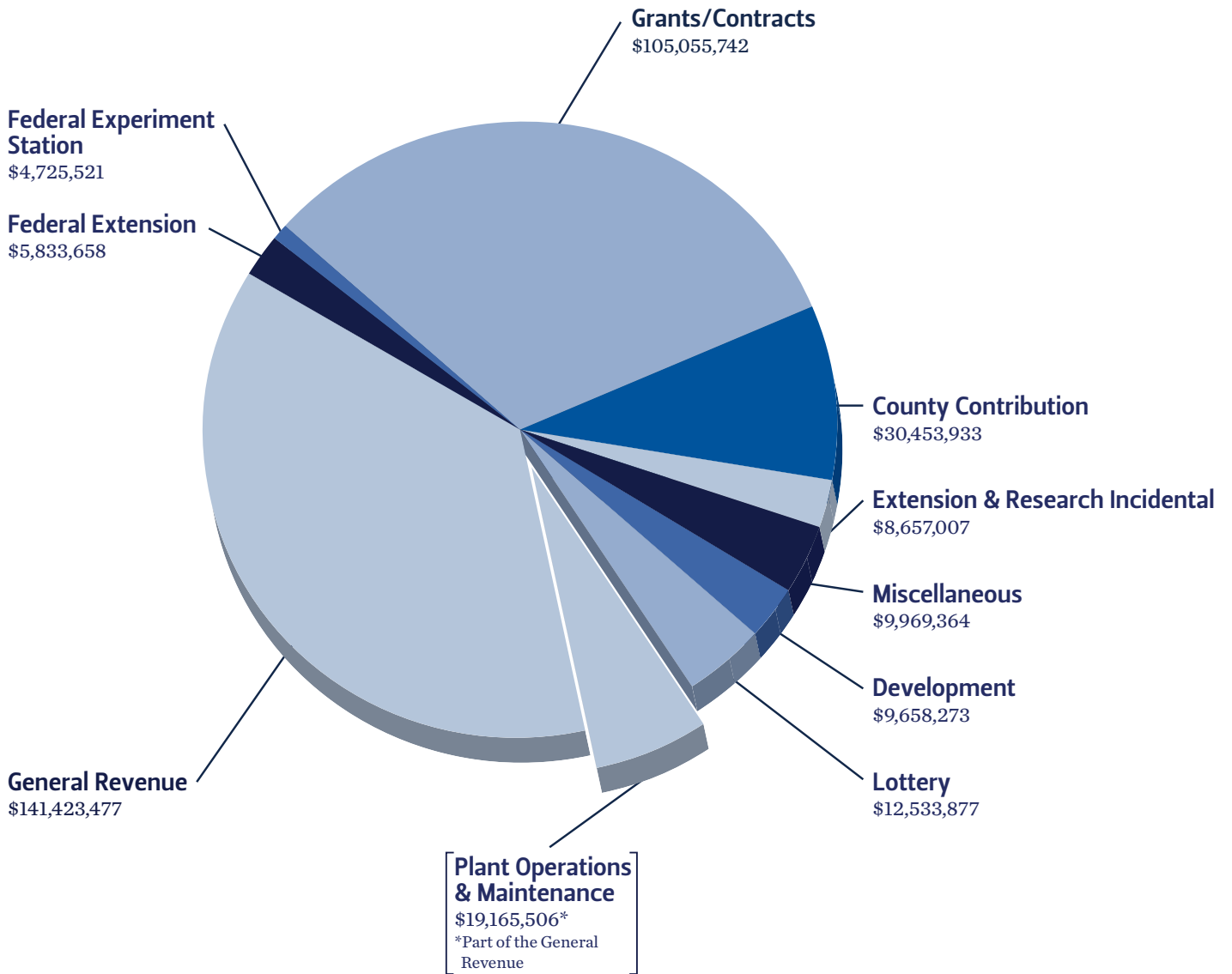
While critical to partner countries and institutions, IP's involvement equally enriches Florida by exposing our faculty, staff and future leaders to the importance of the global community and the life-changing experiences that teaching, research and extension in an international context can provide. These efforts are backed by IFAS' statewide network of Research and Education Centers and their professional colleagues.

Our high-quality human capacity and modern support base make IFAS an effective international partner, reflecting the diversity of IFAS expertise and programs. Particular efforts are devoted to:

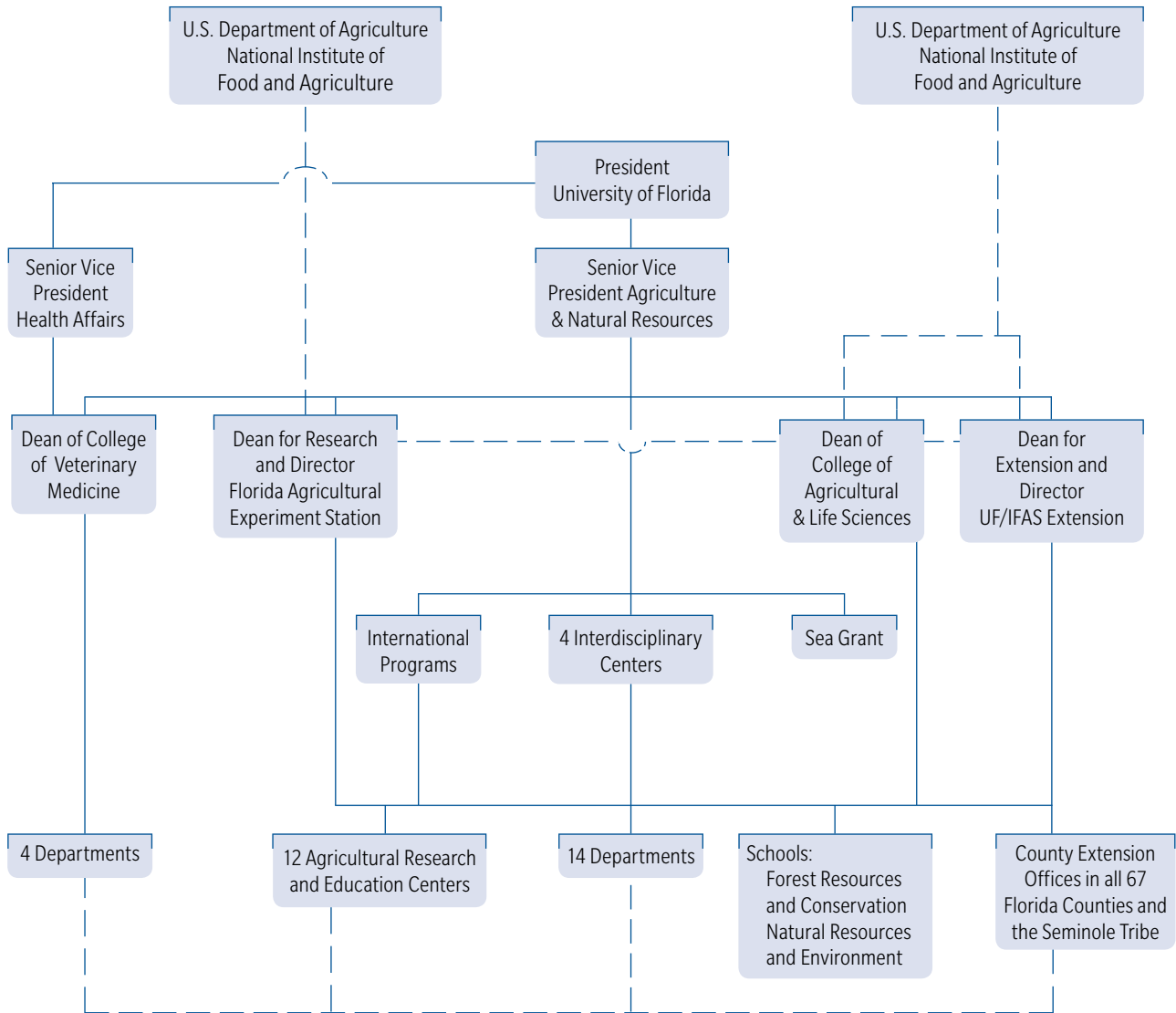
- Improving agricultural and food systems production, technology and marketing (plants, animals and aquatics)
- Environmental sustainability through natural resource management, environmental restoration and conservation (forests, soil, air, land, water and wildlife)
- Management of pests (insects, diseases and weeds) affecting plants, animals, humans, aquatic environments and natural areas
- Improved human health, nutrition, safety and well-being
- Strengthened communities and responsible youth development
- Social, policy, legal, tenure and planning issues which affect the use of resources
- Human capacity development (education, extension, leadership and communication skills)
- Application of advanced information technology

The IP office works closely with the deans for extension, research and teaching to advance these efforts mandated by the land-grant system. International communication is fostered through web pages, periodic newsletters and other publications.

# 2011-2012 UF/IFAS Expenditures | \$328,310,851



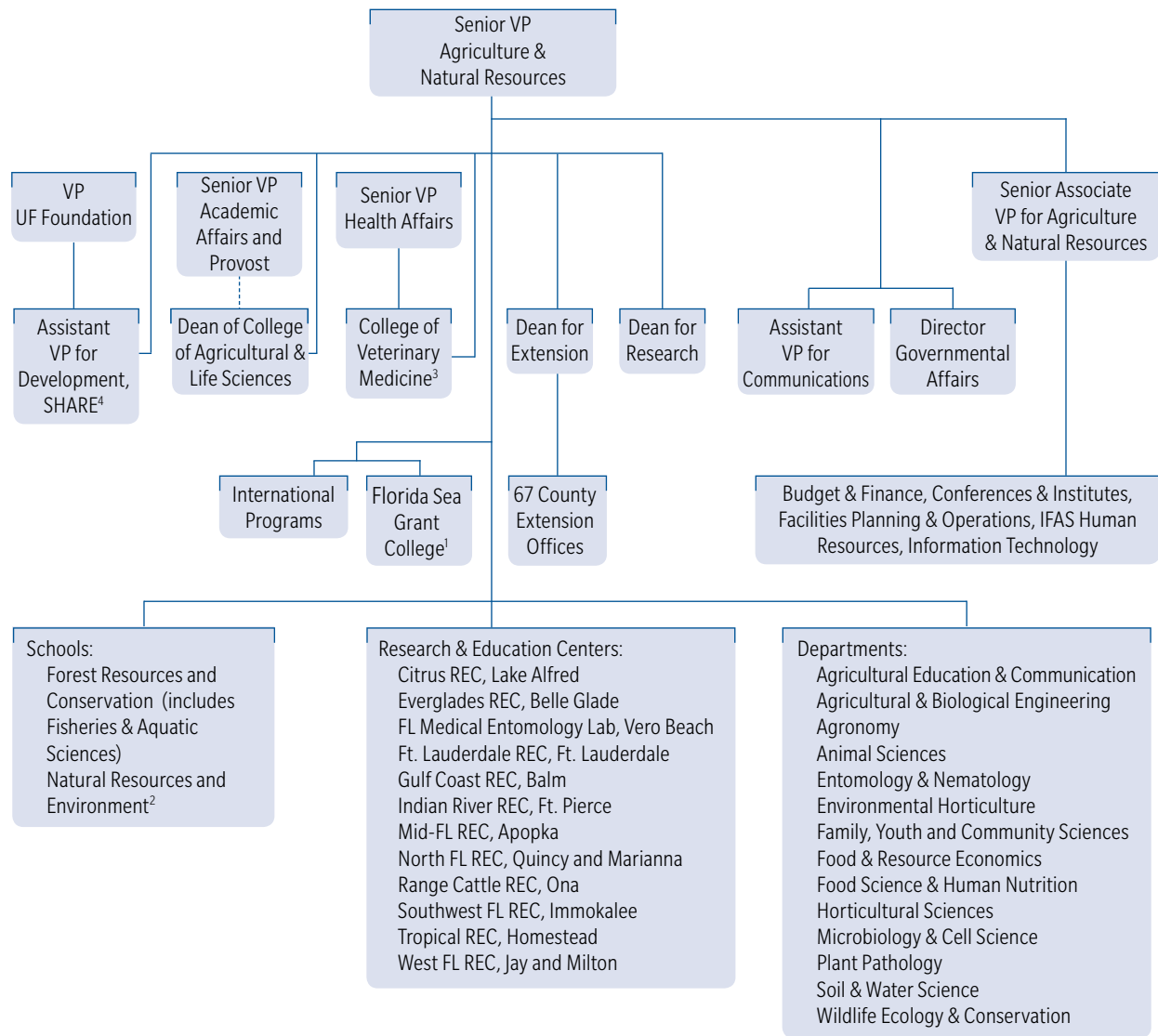
# UF/IFAS Organizational Chart 1 | Programmatic Organization



May 2013



# UF/IFAS Organizational Chart 2 | Administrative Organization



<sup>1</sup>SUS-wide unit, also reports to VP for Academic Affairs

<sup>2</sup>UF-wide unit, also reports to a campus-wide advisory board

<sup>3</sup>Also reports to VP for Health Affairs

<sup>4</sup>Also reports to the VP for Development, UFF

## Contacts

### Office of the Senior Vice President

1008 McCarty Hall D  
P.O. Box 110180  
(352) 392-1971  
Gainesville, FL 32611-0180

Jack Payne  
Senior Vice President  
Agriculture and Natural Resources  
jackpayne@ufl.edu  
Joseph C. Joyce  
Senior Associate Vice President  
Agriculture and Natural Resources  
joejoyce@ufl.edu

### College of Agricultural and Life Sciences

2001 McCarty Hall D  
P.O. Box 110270  
Gainesville, FL 32611-0270

Teresa Balsler, Dean  
tcbalsler@ufl.edu  
(352) 392-1961  
Elaine Turner, Sr. Associate Dean  
returner@ufl.edu  
(352) 392-1963  
Allen Wysocki, Associate Dean  
wysocki@ufl.edu  
(352) 392-1963

### Research (Florida Agricultural Experiment Station)

1022 McCarty Hall D  
P.O. Box 110200  
Gainesville, FL 32611-0200  
(352) 392-1784

John P. Hayes, Dean  
hayesj@ufl.edu  
Mary L. Duryea, Associate Dean  
mlduryea@ufl.edu  
Douglas L. Archer, Associate Dean  
dlarcher@ufl.edu

### School of Forest Resources and Conservation

138 Newins-Ziegler Hall  
P.O. Box 110410  
Gainesville, FL 32611-0410  
(352) 846-0850

Timothy L. White, Director  
tlwhite@ufl.edu

### UF/IFAS Extension

1038 McCarty Hall D  
P.O. Box 110210  
Gainesville, FL 32611-0210  
(352) 392-1761

Nick T. Place, Dean and Director for Extension  
nplace@ufl.edu  
Thomas A. Obreza, Interim Associate Dean and  
Director for Extension  
obreza@ufl.edu  
Joan A. Dusky, Associate Dean, Agricultural Programs  
jadu@ufl.edu  
Keith Diem, Associate Dean, 4-H Programs  
keithdiem@ufl.edu  
(352) 846-4444  
Martin B. Main, Associate Dean, Natural Resource  
Programs, and Assistant Director, Florida Sea Grant  
mmain@ufl.edu  
(352) 392-1837  
Elizabeth Bolton, Interim Program Leader, Extension  
Family and Consumer Sciences Programs  
ebbolton@ufl.edu  
(352) 273-3541  
Pierce Jones, Program Leader, Energy Programs  
piercejones@ufl.edu  
(352) 392-8074

### School of Natural Resources and Environment

103 Black Hall  
P.O. Box 116455  
Gainesville, FL 32611-6455  
(352) 392-9230

Thomas K. Frazer, Interim Director  
frazer@ufl.edu

### College of Veterinary Medicine

P.O. Box 100125  
Gainesville, FL 32610-0125  
(352) 294-4214

James W. Lloyd, Dean

### International Programs

2039 McCarty Hall D  
P.O. Box 110282  
Gainesville, FL 32611-0282  
(352) 392-1965

Walter Bowen, Director  
wbowen@ufl.edu

## UF/IFAS is working for Florida through programs in:

- Water management, quality and allocation
- Plant, animal and human protection from pests and diseases
- Management of urban, rural and human impacts on natural and coastal ecosystems and resources
- Emerging agricultural and natural resource products focusing on global competitiveness
- Food technologies involving safety, nutrition, product development and innovative packaging
- Human resource development: families, children and communities
- Education that produces society-ready college graduates in the agricultural and life sciences and natural and renewable resources
- Agricultural and natural resources public policy issues

## UF/IFAS benefits Floridians with programs that:

- Ensure residents continue to enjoy a safe, abundant food supply at the lowest possible cost
- Effectively manage urban wildlife, ecotourism and sustainability
- Minimize the need for pesticides and fertilizers through environmentally friendly best management practices, including selections of new plant material
- Help reclaim our natural landscapes from invasive pests



*An Equal Opportunity Institution.* Information about alternate formats is available from IFAS Communications, University of Florida, PO Box 110810, Gainesville, FL 32611-0810.